

SUTTER PARK
NEIGHBORHOOD

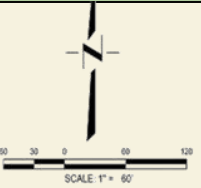


SUTTER PARK

PARK PLANNING MEETING

APRIL 13, 2017

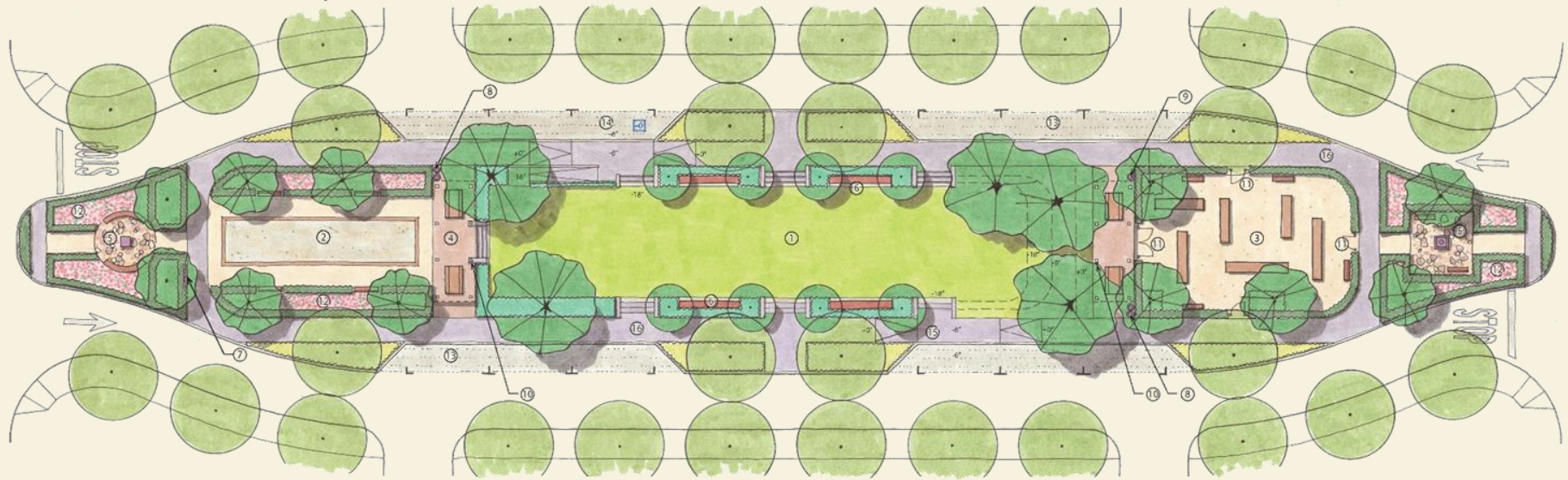
SITE DESIGN



LEGEND:

LAND USE	UNITS
TRADITIONAL PARK NEIGHBORHOOD HOMES	47
TRADITIONAL PARK NEIGHBORHOOD ALLEY HOMES	18
GARDEN HOMES	29
COTTAGE HOMES	11
RESIDENTIAL MIXED USE	1-4
TOTAL RESIDENTIAL UNITS	103-120

SUTTER PARK CONCEPT DRAWING

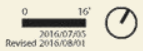


- | | |
|---------------------------------|--|
| 1. Lawn | 9. Drinking Fountain |
| 2. Bocce Ball Court | 10. Electrical Pedestal w/ Outlets |
| 3. Tot Lot (2-5 years olds) | 11. Self-Closing Pedestrian Gates w/ 3' tall Tubular Steel Fence |
| 4. Trellis/Picnic Tables | 12. Rose Garden w/Hedges |
| 5. Seating Garden with Feature | 13. Special Pavement for Parking |
| 6. Benches w/Hedge | 14. Accessible Parking Stall w/Access Ramps |
| 7. Park Name and Park Rule Sign | 15. Maintenance Access with Curb Cuts |
| 8. Trash Receptacles | 16. Sidewalk |

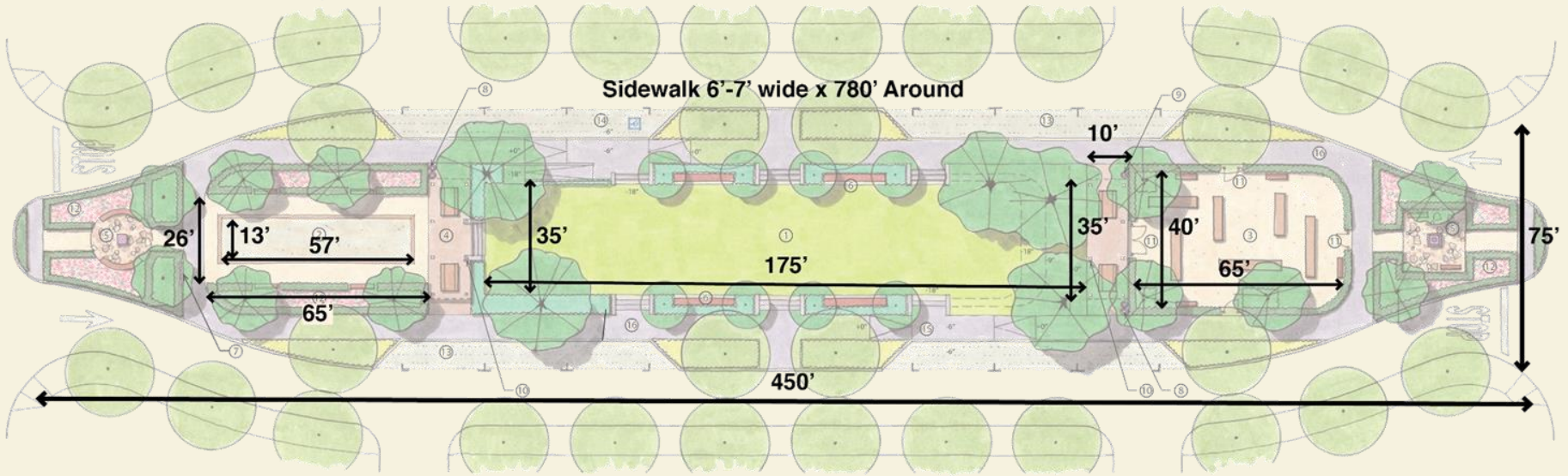
*Low water use, low maintenance, and California native plant materials will be used for landscape.

Conceptual Sutter Central Park Plan

Sutter Park, Sacramento
Prepared for Stonebridge Properties
Prepared by SWA and Morica Simpson ASLA



SUTTER PARK CONCEPT DRAWING



- 1. Lawn
- 2. Bocce Ball Court
- 3. Tot Lot (2-5 years olds)
- 4. Trellis/Picnic Tables
- 5. Seating Garden with Feature
- 6. Benches w/Hedge
- 7. Park Name and Park Rule Sign
- 8. Trash Receptacles
- 9. Drinking Fountain
- 10. Electrical Pedestal w/ Outlets
- 11. Self-Closing Pedestrian Gates w/ 3' tall Tubular Steel Fence
- 12. Rose Garden w/Hedges
- 13. Special Pavement for Parking
- 14. Accessible Parking Stall w/Access Ramps
- 15. Maintenance Access with Curb Cuts
- 16. Sidewalk

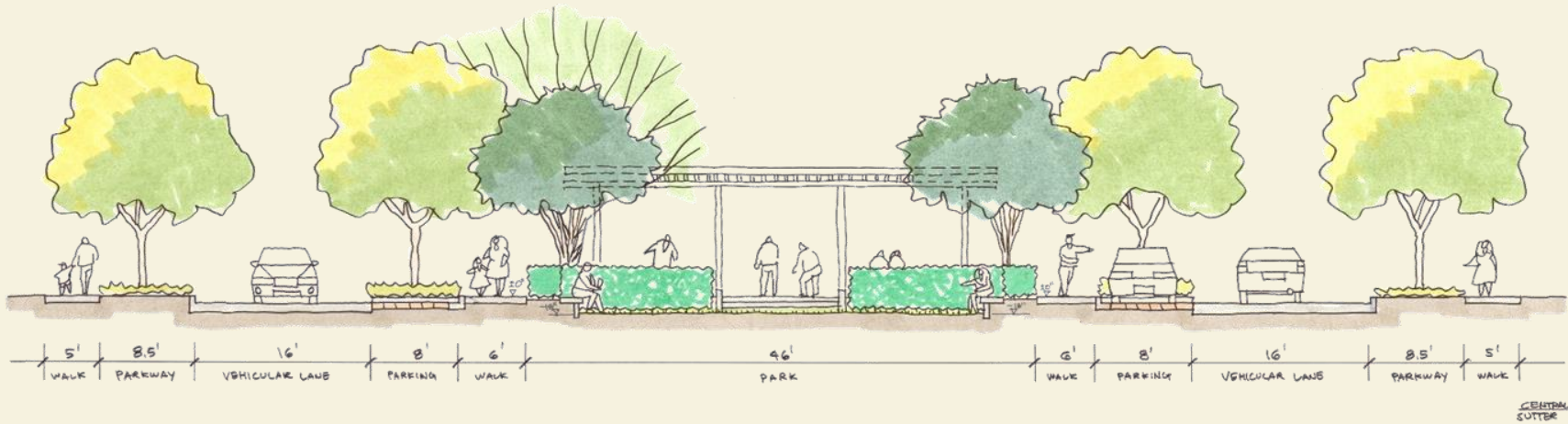
*Low water use, low maintenance, and California native plant materials will be used for landscape.

Conceptual Sutter Central Park Plan
 Sutter Park, Sacramento
 Prepared for Stonebridge Properties
 Prepared by SWA and Morica Simpson ASLA



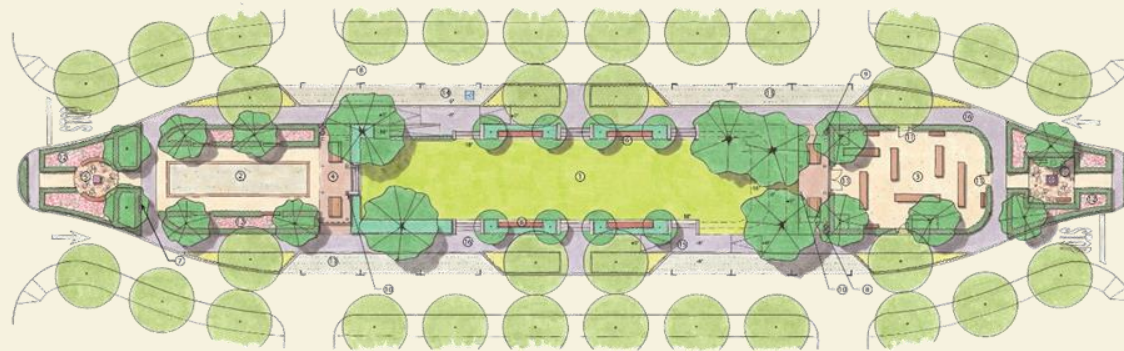
CONCEPTUAL SITE DIMENSIONS

SUTTER PARK CONCEPT DRAWING



CONCEPTUAL CROSS SECTION

SUTTER PARK CONCEPT DRAWING



- | | |
|---------------------------------|--|
| 1. Lawn | 9. Drinking Fountain |
| 2. Bocce Ball Court | 10. Electrical Pedestal w/ Outlets |
| 3. Tot Lot (2-5 years olds) | 11. Self-Closing Pedestrian Gates w/ 3' Tall Tubular Steel Fence |
| 4. Traditional Picnic Tables | 12. Rose Garden w/ Hedges |
| 5. Seating Garden with Feature | 13. Special Pavement for Parking |
| 6. Benches w/ Hedges | 14. Accessible Parking Stall w/ Access Ramps |
| 7. Park Name and Park Rule Sign | 15. Maintenance Access with Curb Cuts |
| 8. Trash Receptacles | 16. Sidewalk |

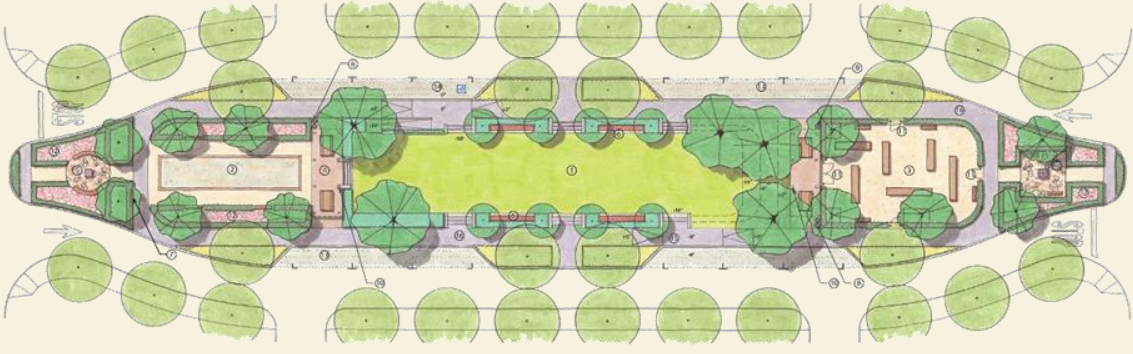
*Low water use, low maintenance, and California native plant materials will be used for landscaping.

Conceptual Sutter Central Park Plan
Sutter Park, Sacramento
Prepared for: Sutteridge Properties
Prepared by: S&B and Monica Urquiza AIA



CONCEPTUAL LANDSCAPING

SUTTER PARK CONCEPT DRAWING



- 1. Lawn
- 2. Bocce Ball Court
- 3. Tot Lot (2-5 years olds)
- 4. Tables/Picnic Tables
- 5. Seating Gardens with Feature Benches w/Hedge
- 6. Park Name and Park Rule Sign
- 7. Trash Receptacles
- 8. Drinking Fountain
- 9. Electrical Pedestal w/ Outlets
- 10. Self-Closing Pedestrian Gates w/ 3' Tall Tubular Steel Fence
- 11. Flower Garden w/Hedges
- 12. Special Pavement for Parking
- 13. Accessible Parking Stall w/Access Ramps
- 14. Maintenance Access with Curb Cuts
- 15. Sidewalk
- 16.

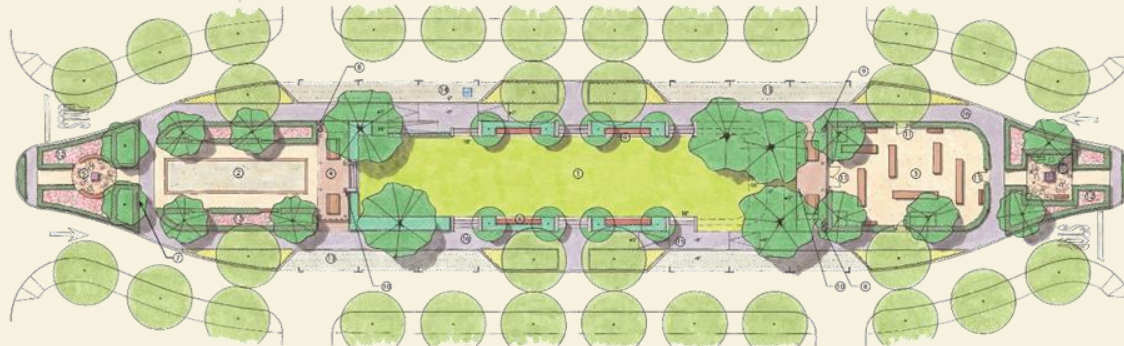
*Low water use, low maintenance, and California native plant materials will be used for landscape.

Conceptual Sutter Central Park Plan
Sutter Park, Sacramento
Prepared for Stonebridge Properties
Prepared by SHoP and Monica Simpson ASLA



CONCEPTUAL PLAY AREAS

SUTTER PARK CONCEPT DRAWING



- 1. Lawn
- 2. Bocce Ball Court
- 3. Tot Lot (2-5 years olds)
- 4. Tables/Picnic Tables
- 5. Seating Garden with Feature
- 6. Benches w/Hedges
- 7. Park Name and Park Rule Signs
- 8. Trash Receptacles
- 9. Drinking Fountain
- 10. Electrical Pedestal w/ Outlets
- 11. Self-Closing Pedestrian Gates w/ 3' tall Tubular Steel Fence
- 12. Rose Garden w/Hedges
- 13. Special Pavement for Parking
- 14. Accessible Parking Stall w/ Access Ramps
- 15. Maintenance Access with Curb-Cuts
- 16. Sidewalk

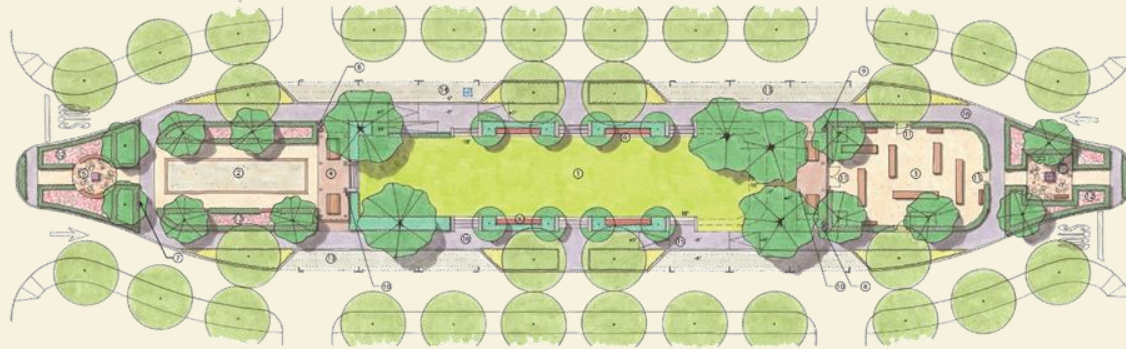
*Low water use, low maintenance, and California native plant materials will be used for landscape.

Conceptual Sutter Central Park Plan
Sutter Park, Sacramento
Prepared by: SHoP Architecture
Project by: SHoP and Mosaic Group AIA



CONCEPTUAL FURNISHINGS

SUTTER PARK CONCEPT DRAWING



- 1. Lawn
- 2. Bocce Ball Court
- 3. Tot Lot (2-5 years olds)
- 4. Tables/Picnic Tables
- 5. Seating Garden with Feature
- 6. Benches w/hedge
- 7. Park Name and Park Rule Sign
- 8. Trash Receptacles
- 9. Drinking Fountain
- 10. Electrical Pedestal w/ Outlets
- 11. Self-Closing Pedestrian Gates w/ 3' tall Tubular Steel Fence
- 12. Rose Garden w/hedge
- 13. Special Pavement for Parking
- 14. Accessible Parking Stall w/ Access Ramps
- 15. Maintenance Access with Curb/Cuts
- 16. Sidewalk

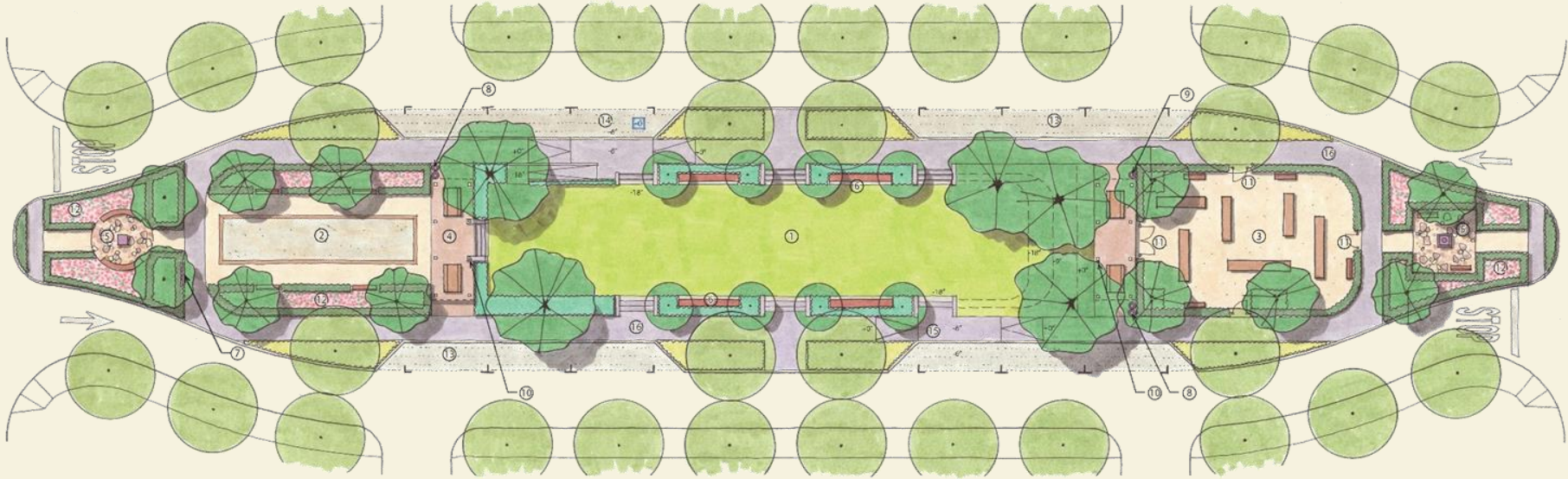
*Low water use, low maintenance, and California native plant materials will be used for landscape.

Conceptual Sutter Central Park Plan
Sutter Park, Sacramento
Prepared for: Sutteridge Properties
Prepared by: S&M and Mosaic Landscape AIA



CONCEPTUAL SITE ELEMENTS

SUTTER PARK CONCEPT DRAWING



- 1. Lawn
- 2. Bocce Ball Court
- 3. Tot Lot (2-5 years olds)
- 4. Trellis/Picnic Tables
- 5. Seating Garden with Feature
- 6. Benches w/Hedge
- 7. Park Name and Park Rule Sign
- 8. Trash Receptacles
- 9. Drinking Fountain
- 10. Electrical Pedestal w/ Outlets
- 11. Self-Closing Pedestrian Gates w/ 3' tall Tubular Steel Fence
- 12. Rose Garden w/Hedges
- 13. Special Pavement for Parking
- 14. Accessible Parking Stall w/Access Ramps
- 15. Maintenance Access with Curb Cuts
- 16. Sidewalk

*Low water use, low maintenance, and California native plant materials will be used for landscape.

Conceptual Sutter Central Park Plan
 Sutter Park, Sacramento
 Prepared for Stonebridge Properties
 Prepared by SWA and Morica Simpson ASLA



COMMENTS & FEEDBACK

