



# American River Common Features 2016 Sacramento River Levees Monthly Update

JUNE 2024

## Highlights (last 30 days)

**Sacramento River Erosion (SRE):** Contract 2 Season 2 and Contract 4 are on track for 2024 construction! An informational public pre-construction meeting was held on May 23, 2024 to address engineering details, environmental and construction impacts and what the Corps and its non-federal partners are doing to mitigate said impacts. The slide deck and a copy of the recording are available at our project webpage.

**Sacramento River East Levee (SREL):** Contract 3 is complete. Contract 4 is 95% complete and will continue through June 2024. Jet grout work is expected to be completed by mid April 2024. Testing and clean up work is expected to be completed by end of June 2024.

## Looking Ahead (next 30+ days)

### What can I expect?

#### SRE Sacramento River Erosion

Mobilization for work at Contract 2 Sites 1, 4 and 5 (see the map on the next page). A few trees will be cut at Site 1 to make way for the revetment work around the Pioneer Bridge. Work will mostly be completed by barge. However the work around Pioneer Bridge must be accessed from land (an area near Pioneer Landing Park (1900 Front Street). The plan is that the contractor will install a temporary bridge over the California Railroad Museum's recreational track to enable the conveyance of equipment to the project site. The contractor and State Parks (the entity that technically owns the railroad) will be in coordination and project work is not expected to interfere with Railroad Museum train rides.

#### SREL Seepage, Stability, and Overtopping

Garcia Bend Park will remain unavailable for public use through April 2024 because of restoration of parking lot. Jet Grouting at Westin Hotel will continue through April 2024 with demobilization and site clean-up through June 2024.

## Question of the Month

Terms like rip-rap, bank stability and revetment installation are often used synonymously. While they can be similar they do not technically mean the same thing. What do the terms rip-rap, bank stability and revetment mean then?

Revetments are sloping structures built on embankments, shorelines, or in front of sea walls to absorb and dissipate the energy of waves and water. They can be used to protect against erosion caused by wave action, storm surge, and currents, or to stabilize river banks and hold rivers in their desired alignment. Revetments can also help prevent damage during periods of heavy seasonal rains or floods. Revetment can be concrete (like the previous concrete mattress at Contract 2, Site 2 (completed last year)). It can also be asphalt, sandbags or other material.

Rip rap (also known as shot-rock, rock armor, or rubble) is a layer of large stones, cobbles or boulders that protect soil from erosion.

Bank Stability is one of the aspects the ARCF16 project intends to achieve by the systemic and strategic installation of cutoff walls and erosion control at the most risk prone sites along the east bank of the Sacramento River.

### Information Resources:

#### Project Webpage:

[www.sacleveeupgrades.com](http://www.sacleveeupgrades.com)



#### Sacramento District Homepage:

[www.spk.usace.army.mil](http://www.spk.usace.army.mil)

#### Contact Information:

For questions or concerns, please contact our Public Affairs Office at  
916-557-5100

[spk-pao@usace.army.mil](mailto:spk-pao@usace.army.mil)

## Upcoming Milestones

### Seepage/Stability/ Overtopping

#### SREL Contract 4

Construction  
April 2023 - June 2024

#### SREL Contract 5

Construction :  
2026

### Erosion

#### Contract 2

Construction  
July 2023—October 2024

#### Contract 3

Construction Contract Award  
Anticipated January/February  
2025

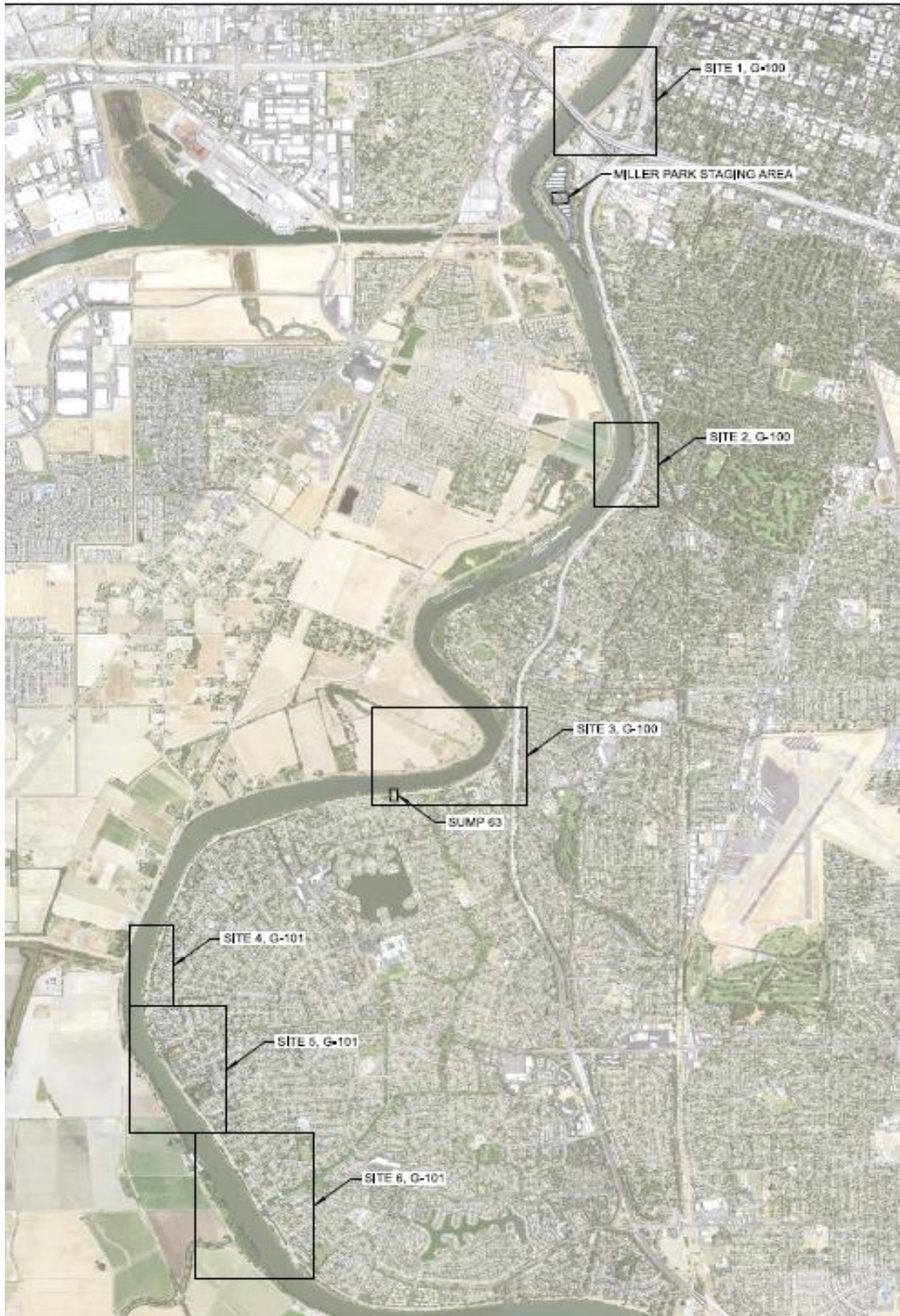
#### Contract 4

Construction  
July 2024—October 2024

Additional information can be found on  
our project web page at  
[www.sacleveeupgrades.com](http://www.sacleveeupgrades.com)

\*All Dates Subject to Change

# Erosion Contract 2 Construction Map



# Erosion C4 Construction Map

