

SUTTER'S LANDING REGIONAL PARK SITE AMENITIES PLAN UPDATE

August 4, 2025



Existing Conditions

- (A) 28th & B St. Skate Park
- (B) Corporation Yard
- (C) Restroom Building
- (D) Bocce Ball Courts
- (E) Parking Lot
- (F) Shade Shelter
- (G) Dog Park
- (H) Flare Station
- (I) Detention Basin
- (J) Transmission Towers
- (K) Mural
- (L) Concession Building
- (M) ADA Access Trail
- (N) Fuel Station

Proposed Amenities

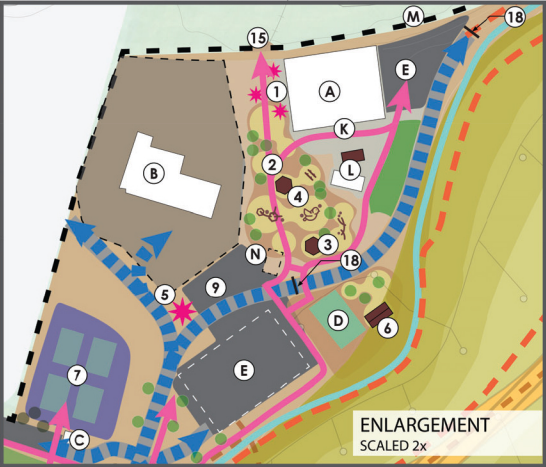
- (1) Garden/ Art Walk
- (2) Nature Play
- (3) Outdoor Fitness
- (4) Community Gathering Space
- (5) Art/ Signage
- (6) Group Picnic Area
- (7) Multi-Use Courts
- (8) All Weather / Low Water Turf Fields
- (9) Paved Parking Lot (Gated and Locked)
- (10) Community Event Space / Overflow Parking
- (11) Vista Point with Group Viewing Area
- (12) Bike Pump Track
- (13) Resting Point/ Seating
- (14) Small Play Area
- (15) River Lookout Point
- (16) Open Space/ Natural Area
- (17) Landfill Operations (No public access)
- (18) Gate

Circulation

- Pedestrian - Paved
- - - Pedestrian - Unpaved
- Vehicular - Paved
- - - Two Rivers Bike Trail (Designed concurrently and pending final agreement)
- - - Maintenance/Multi-Use Gravel Road

Site Acreage

Total acre: 204 acre
 Developed/Paved: 27 acre (13% of total site)
 Open Space: 156 acre (87% of total site)



Note

All parking lots will have gates that lock after hours

