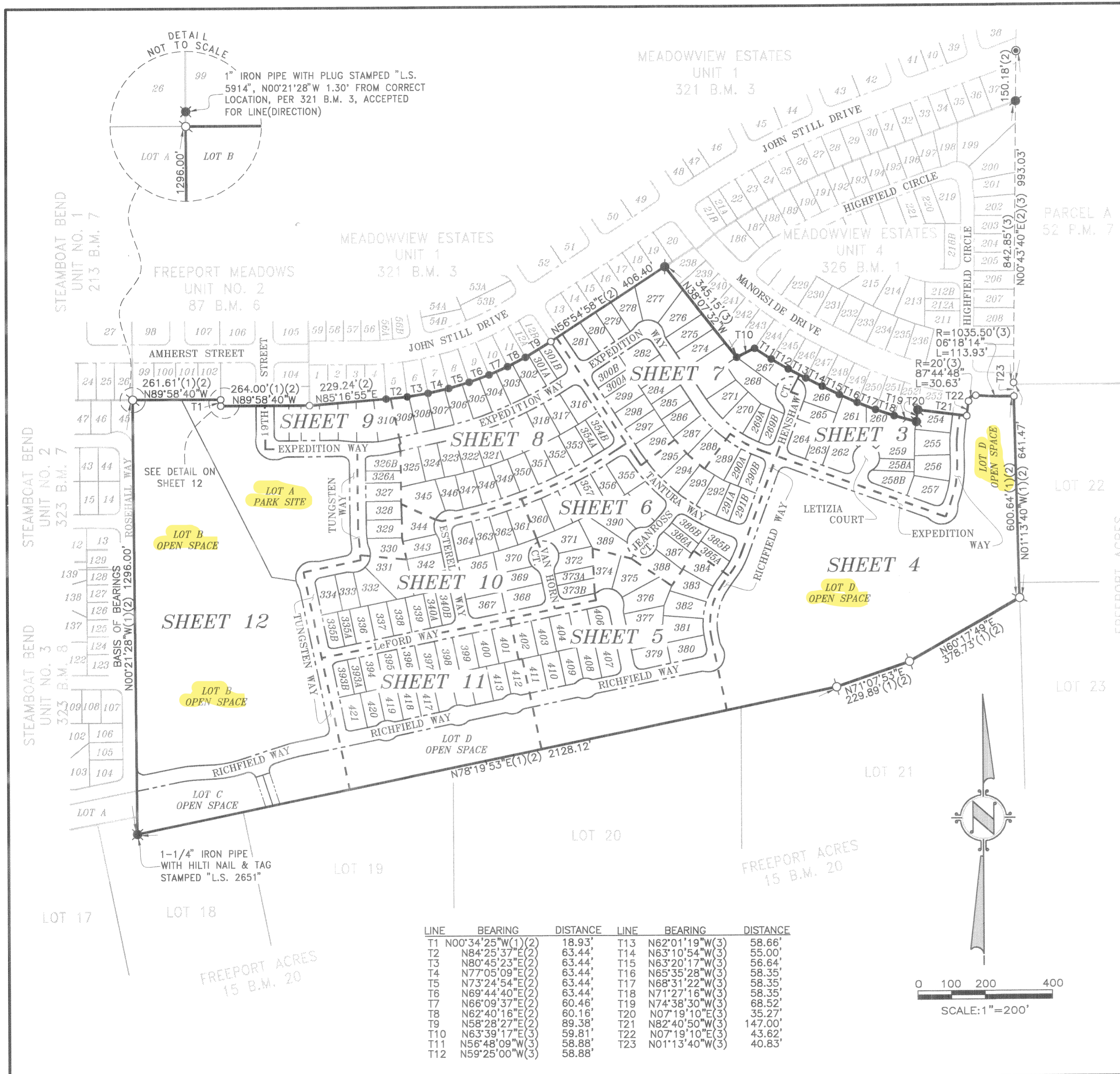


330-1-2



- NOTES**
1. ALL CURVES ARE DIMENSIONED WITH RADIUS, DELTA AND ARC LENGTH. ALL DISTANCES SHOWN ARE FEET AND DECIMALS THEREOF.
 2. TOTAL AREA FOR THIS SUBDIVISION IS 65.28± ACRES GROSS, CONSISTING OF 182 RESIDENTIAL LOTS AND 4 MISCELLANEOUS LOTS.
 3. LOTS A, B, C AND D SHALL BE GRANTED IN FEE TO THE CITY OF SACRAMENTO.
 4. LOT A IS DESIGNATED FOR PARK PURPOSES.
 5. LOTS B, C, AND D ARE DESIGNATED FOR OPEN SPACE PURPOSES.
 6. ALL LOTS BEING CREATED BY THIS MAP INCLUDE FEE TITLE TO THE CENTERLINE OF THE STREET, WAYS AND COURTS AS SHOWN.
 7. AREAS FOR LETTERED LOTS ARE AS FOLLOWS:

	GROSS	NET
LOT A:	3.144 AC.	3.144 AC.
LOT B:	9.963 AC.	9.963 AC.
LOT C:	1.071 AC.	1.706 AC.
LOT D:	14.905 AC.	14.856 AC.

- LEGEND**
- DIMENSION POINT
 - SET 5/8" REBAR CAPPED L.S. 6815 AT ALL REAR LOT CORNERS AND ALL FRONT LOT CORNERS OR 1" BRASS DISK STAMPED L.S. 6815 AT 1.00' PROJECTION OF PROPERTY LINE ONTO SIDEWALK FOR FRONT CORNERS.
 - ⊙ SET 1-1/2" LONG x 1/4" DIA. PK NAIL TAGGED "L.S. 6815"
 - ⊗ SET 1-1/4" IRON PIPE TAGGED "L.S. 6815"
 - ⊗ SET WELL MONUMENT STAMPED "L.S. 6815"
 - ⊗ SET 1-1/4" IRON PIPE TAGGED "L.S. 6815" - WITNESS CORNER
 - FOUND 1/4" DIA. PK NAIL TAGGED "L.S. 4732"
 - FOUND 5/8" REBAR TAGGED "L.S. 4732"
 - FOUND 3/4" IRON PIPE TAGGED "L.S. 4732"
 - FOUND MONUMENT AS NOTED
 - (R) RADIAL LINE
 - ΔΔΔ ΔΔΔ ΔΔΔ DELTA XX' XX' XX'
 - R.I.O.D. ROADWAY IRREVOCABLE OFFER OF DEDICATION
 - P.U.E. PUBLIC UTILITY EASEMENT

BASIS OF BEARINGS

THE BASIS OF BEARINGS FOR THIS SURVEY WAS ESTABLISHED FROM THE MONUMENTS SHOWN ON THE FINAL MAP OF MEADOWVIEW ESTATES UNIT 1 RECORDED IN 321 B.M. 3, SACRAMENTO COUNTY RECORDS. THE BEARING BETWEEN SAID MONUMENTS IS NORTH 00°21'28" WEST.

- REFERENCES**
- (1) 20030725 O.R. 686, CERTIFICATE OF COMPLIANCE FOR LOT LINE ADJUSTMENT
 - (2) 321 B.M. 3, FINAL MAP OF MEADOWVIEW ESTATES UNIT 1
 - (3) 326 B.M. 1, FINAL MAP OF MEADOWVIEW ESTATES UNIT 4

FINAL MAP OF
MEADOWVIEW ESTATES
UNIT 5
 SUBDIVISION NO. P00-116.5
 BEING ALL OF PARCEL 4 OF THE
 CERTIFICATE OF COMPLIANCE FOR LOT LINE ADJUSTMENT
 FILED IN 20030725 O.R. 686, SACRAMENTO COUNTY RECORDS
 CITY OF SACRAMENTO STATE OF CALIFORNIA

MAY 2004

Sheet 2 of 12

WOOD RODGERS
 ENGINEERING • MAPPING • PLANNING • SURVEYING
 3301 C St., Bldg. 100-B Tel 916.341.7760
 Sacramento, CA 95816 Fax 916.341.7767