

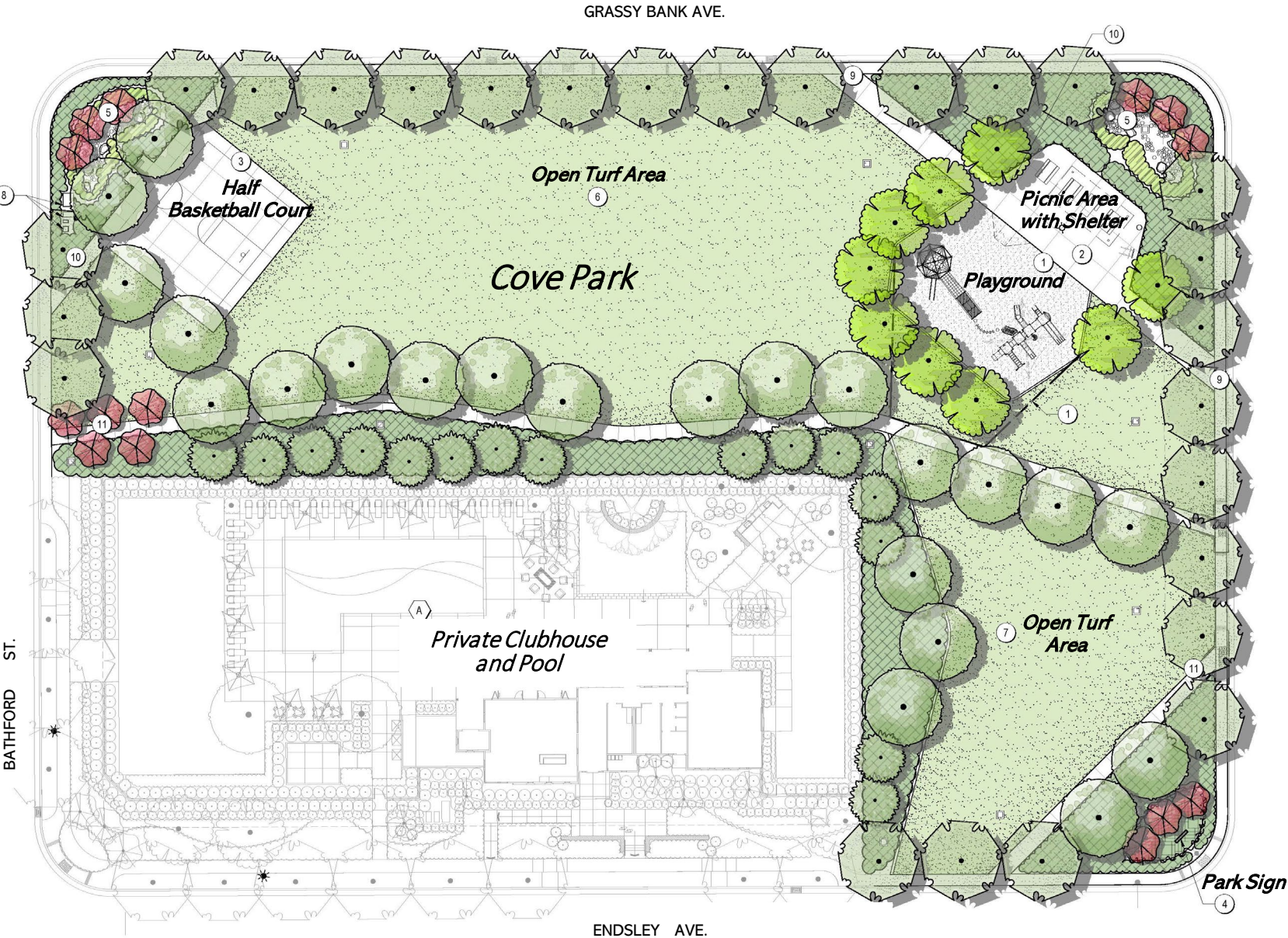
**KEYNOTES**

**PUBLIC PARK**

- ① PLAYGROUND, AGES 2-5 (TOT LOT), 3,500SF (WITH OPTIONAL 5,000SF AREA SHOWN FOR RECOMMENDED 5-12 EQUIPMENT). PLAY AREA INCLUDES ATTACHED SHADE, 'FIBAR' PLAY SURFACE, AND ACCESSIBLE ACCESS (MIN. 50' FROM ROADWAY).
- ② SMALL GROUP PICNIC AREA WITH OVERHEAD SHELTER, (4) PICNIC TABLES, AND ADJACENT TRASH CAN BICYCLE RACK, AND CITY-STANDARD POLE LUMINAIRE (SECURITY LIGHTING).
- ③ HALF BASKETBALL COURT WITH ADJACENT BENCH SEATING AND COMPANION SEATING SPACE
- ④ PARK SIGN LOCATION WITH ENHANCED ENTRY PLANTING AND ACCENT TREES
- ⑤ STORMWATER/BIORETENTION PLANTER, TYPICAL OF (2) WITH NATURAL BOULDERS AND ENHANCED PLANTING AT PROJECT CORNERS.
- ⑥ OPEN TURF PLAY AREA, APPROXIMATELY 200' X 120', CENTER CROWNED WITH 2% SLOPE.
- ⑦ SECONDARY OPEN TURF PLAY AREA WITH SHADE TREES NEAR HIGH POINT OF BERM (SLOPE 1:5 MAX).
- ⑧ IRRIGATION SERVICE, BACKFLOW, BOOSTER PUMP, AND CONTROLLER. POTABLE WATER SERVICE (FOR DRINKING FOUNTAIN) ALSO ADJACENT.
- ⑨ 10' WIDE PATH WITH ROLLED CURB AND REMOVABLE BOLLARDS FOR MAINTENANCE VEHICLE ACCESS TO TRASH CAN.
- ⑩ DRINKING FOUNTAIN (HI-LO, WITH JUG FILLER AND PET BOWL)
- ⑪ WALKING PATHS, 6' WIDE MINIMUM.

**THE COVE (COMMUNITY CONTEXT)**

- Ⓐ ADJACENT 'CORNERSTONE' CLUB HOUSE (HOA-MAINTAINED, NOT FINAL: CONCEPTUAL PLAN ONLY)
- Ⓑ COMMUNITY PASEOS



MASTER PLAN FOR:  
**Cove Park**  
 CITY OF SACRAMENTO, CALIFORNIA (1.84 AC)