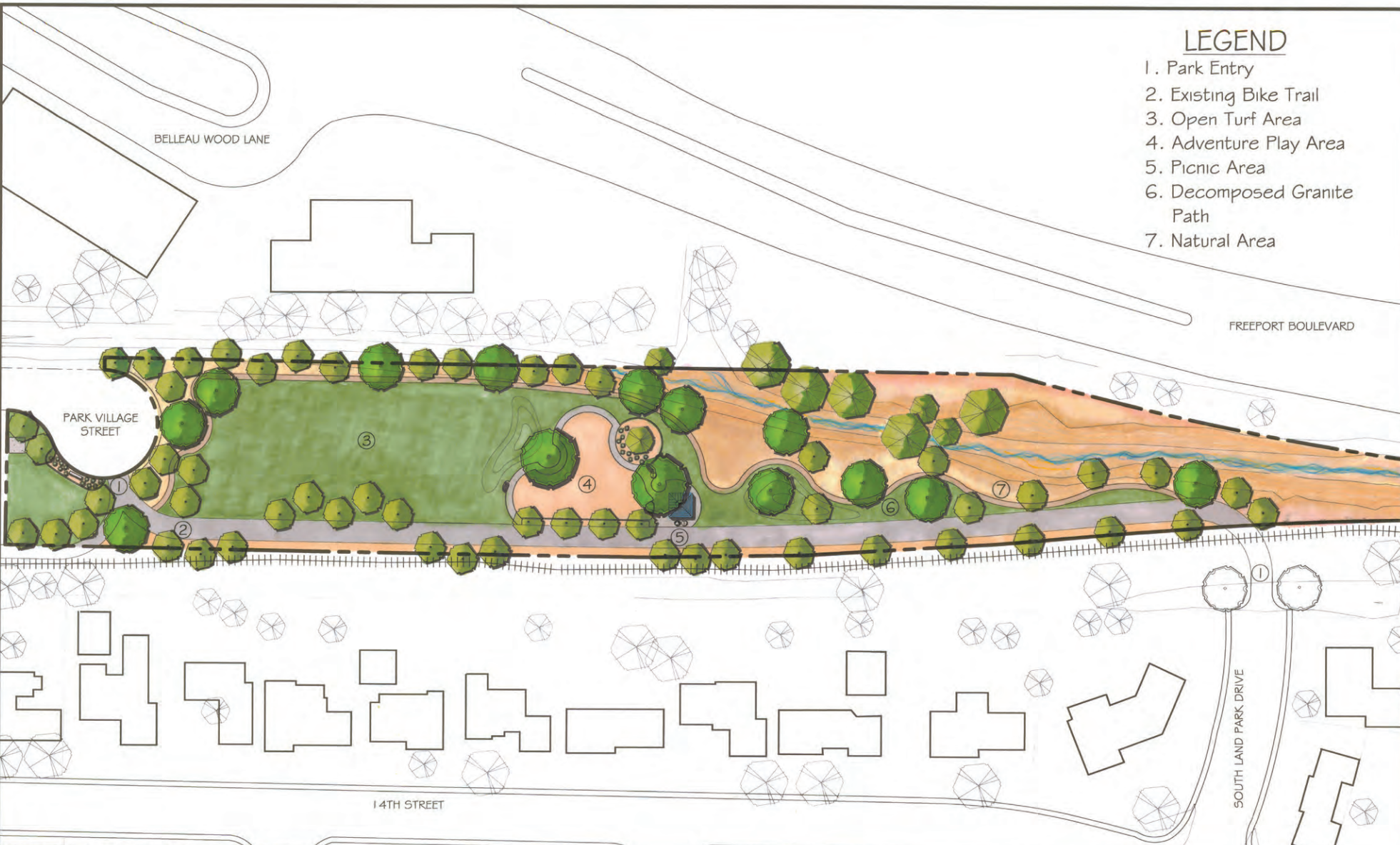


LEGEND

- 1. Park Entry
- 2. Existing Bike Trail
- 3. Open Turf Area
- 4. Adventure Play Area
- 5. Picnic Area
- 6. Decomposed Granite Path
- 7. Natural Area



MASTER PLAN FOR:
Charlie Jensen Park 2.68 acres
CITY OF SACRAMENTO
DEPARTMENT OF PARKS & RECREATION

PROJECT MANAGER: JEFF NITTKA
DESIGNED/ DRAWN BY: JONATHAN SCHWARTZ
DATE: AUGUST 10, 2004

A north arrow points to the left. Below it is a scale bar with markings at 0, 15, 30, 60, 90, and 120 feet.