

Cove Park (March 2021)

Cove Park is a 1.84-acre neighborhood park located in South Natomas, which includes open turf areas, walkways, a half basketball court, a children's playground next to a small group picnic area with a shade structure, four tables, and a small grill. The park also includes storm retention and rain gardens on the corners of the park, benches, a drinking fountain, trash receptacles, bike racks, a park name signage wall, and shade trees, and water-efficient landscaping.



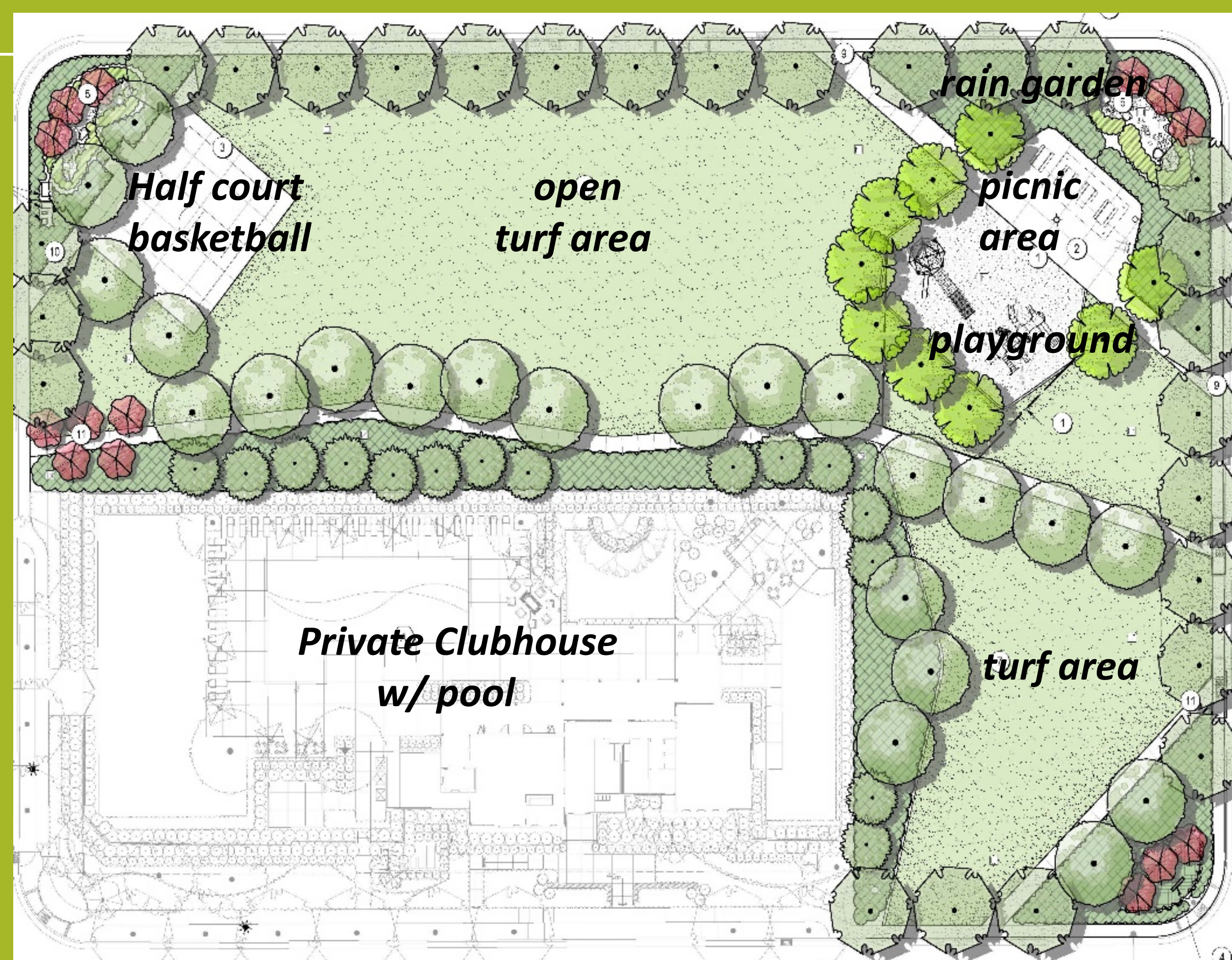
basketball court



children's playground



park name sign



rain garden



bench



group picnic area