

Pop-up Workshop Series Summary of Input

Project Overview

The City of Sacramento has a long-standing reputation as the City of Trees. Emphasis on the importance of trees in Sacramento dates to its founding in 1849.

In August 2016, the City adopted comprehensive updates to the City Code to update and clarify its tree regulations. During the process of revising the city’s tree-related ordinances, additional policy issues were raised regarding the City’s urban forest and its future. With a changing environment and new technological tools, an updated Urban Forest Master Plan is required to preserve the health and stewardship of Sacramento’s urban forest.

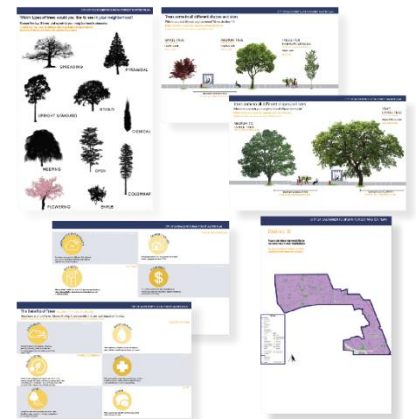
The City’s updated Urban Forest Master Plan will address the protection, maintenance, sustainability, and enhancement of Sacramento’s tree canopy, and allow the City to establish goals and monitor our progress.

Pop-up Workshop Series Objective

The objective of the pop-up workshop series was to engage community members throughout the City of Sacramento in a grassroots effort. The project team and the Tree Partners attended several community events throughout each district in Sacramento to obtain input.

Questions presented at each pop-up workshop included:

- What types of trees would you like to see in your neighborhood?
- Trees come in all different shapes and sizes. Which trees best fit your neighborhood? Where do they fit?
- Trees have a lot to offer us. Choose the top three benefits that are most important to you.
- Where would you like to see more trees in your neighborhood?

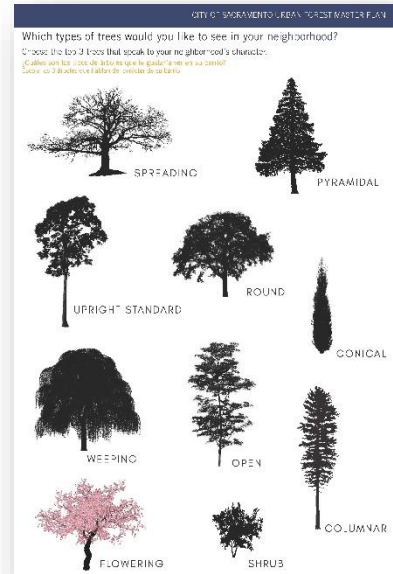
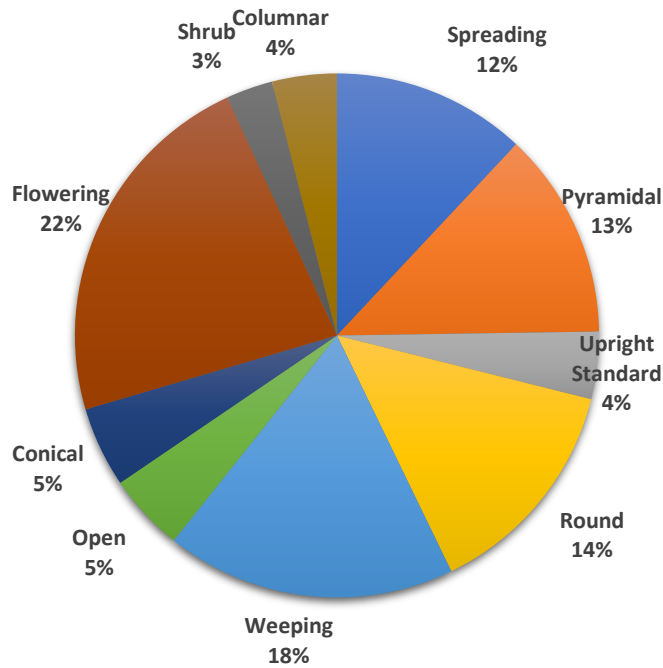


A total of 13 pop-up workshops were held by the project team and the Tree Partners in each district in Sacramento. The various events included farmers markets, family-friendly music and movie events, community tree planting workshops, a high school, and various neighborhood association events.

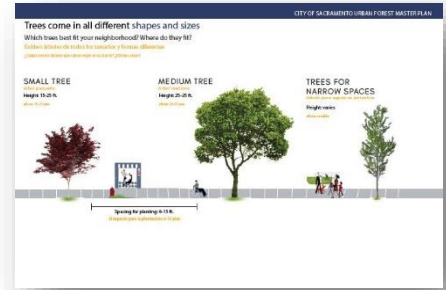
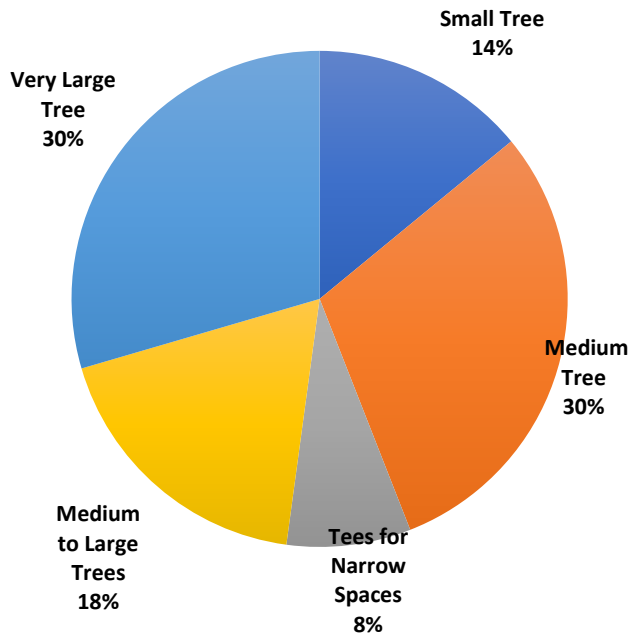
Pop-up Workshop Series Summary: All Districts

Below are community responses received from 13 pop-up workshops in each district, organized by question. The graphs below depict the responses received from all districts combined.

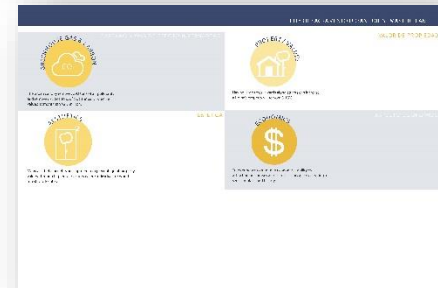
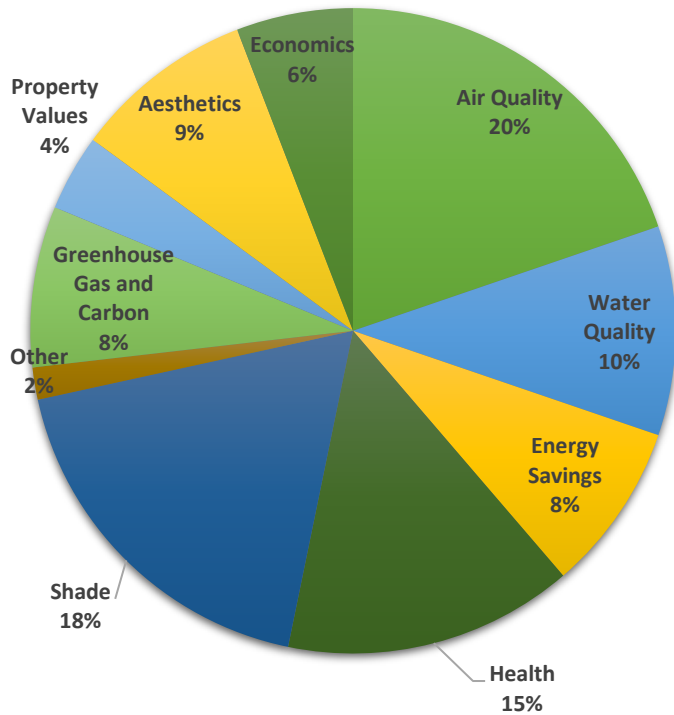
What types of trees would you like to see in your neighborhood?



Trees come in all different shapes and sizes. Which trees best fit your neighborhood?



Trees have a lot to offer us. Choose the top three benefits that are most important to you?



Pop-up Workshop Series Summary by District

Below are community responses received from 13 pop-up workshops in each district, organized by district.

District 1

The project team held one pop-up workshop in District 1 at Councilmember Angelique Ashby’s First Friday family event.

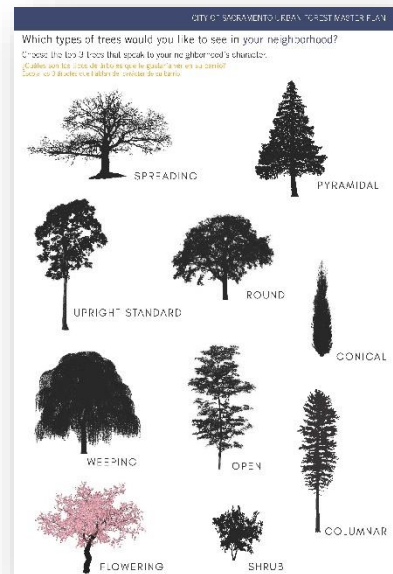
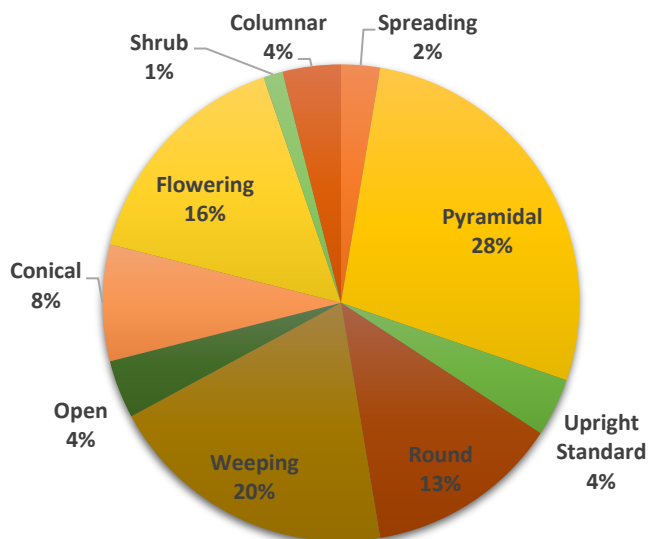
The pop-up was held on Friday, September 7, at Natomas Regional Park, from 5:00 p.m. – 8:00 p.m.

The project team received input from more than 30 community members, including families and children.

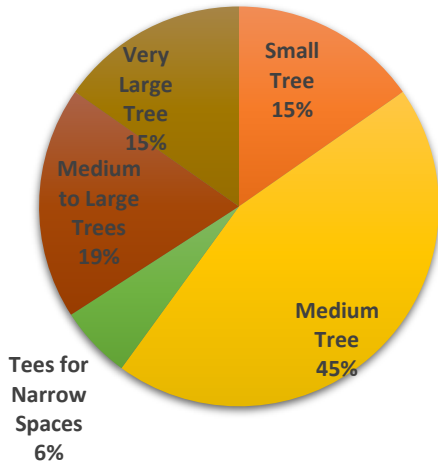
Below is a compilation of feedback received from District 1.



What types of trees would you like to see in your neighborhood?



Trees come in all different shapes and sizes. Which trees best fit your neighborhood?

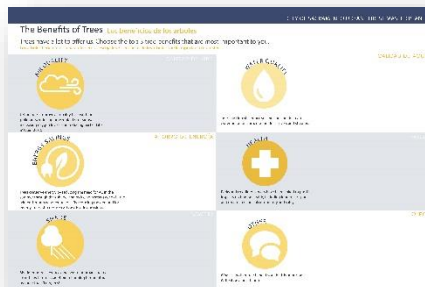


Comments:

- Small trees in the center divider.
- Fewer trees with sap. Small trees mean fewer leaves to rake.
- Medium trees in parking lots, but no trees with sap! It sticks to cars.
- No berry trees.
- I am considering buying a home, and when there are large trees with shade around, it is an incentive to buy.
- Fruit trees are good.

Trees have a lot to offer us. Choose the top three benefits that are most important to you?

No input received.

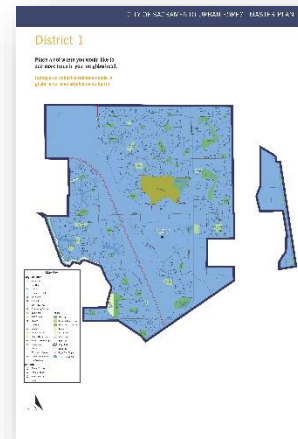


Where would you like to see more trees in your neighborhood?

- Along Mabry Drive and Cliff Breeze Place
- North Natomas Regional Park
- Tower Center Drive and New Market Drive

Additional comments:

- Weeping willows (at North Natomas Regional Park).
- We have incentive to buy based on trees.
- No trees that rain pollen on homes.



District 2

The project team held one pop-up workshop in District 2 at Grant Union High School during their lunch hour.

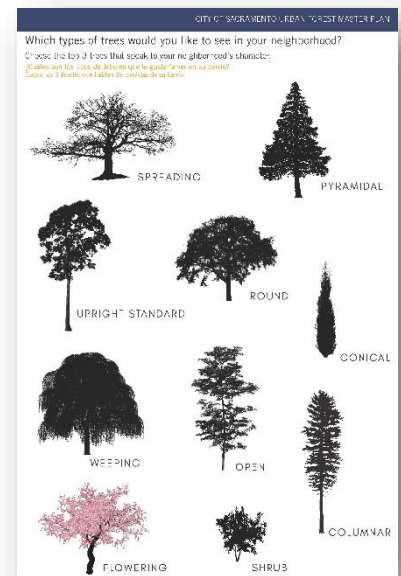
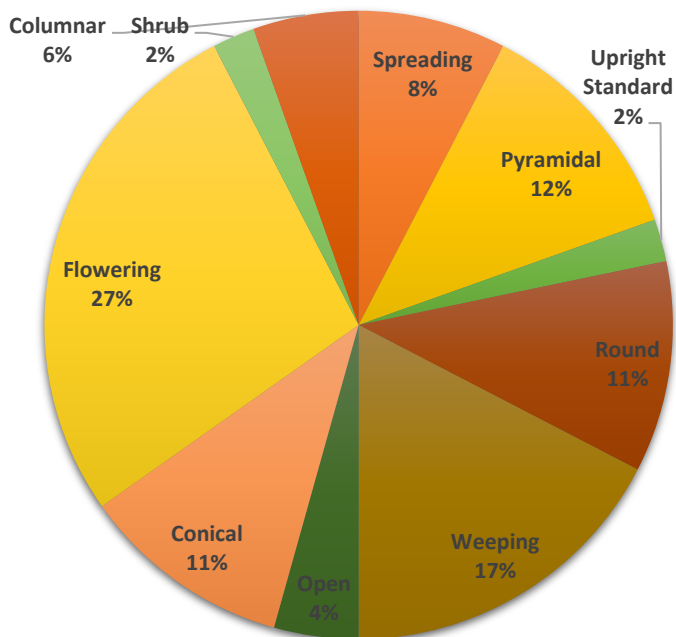
The pop-up was held on Thursday, October 4, in the Promenade at GUHS from 11:55 – 12:35.

The project team received input from more than 40 students, and several faculty members.

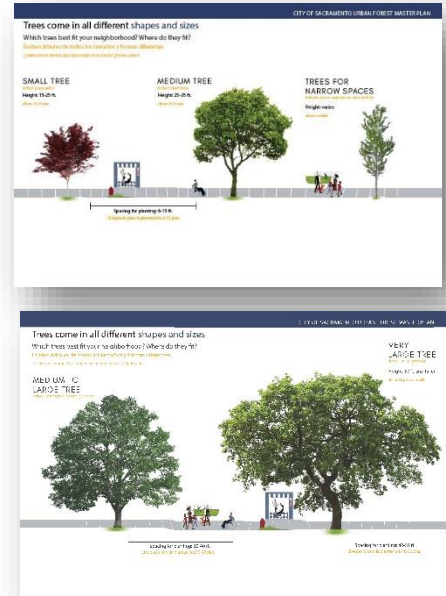
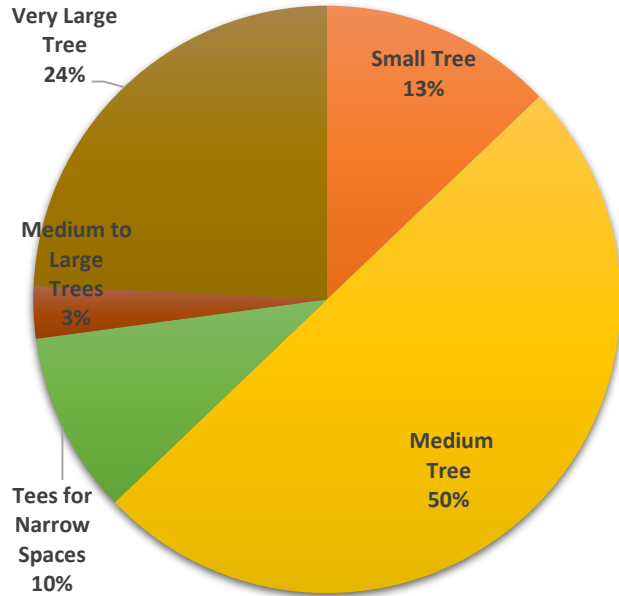
Below is a compilation of feedback received from District 2.



What types of trees would you like to see in your neighborhood?



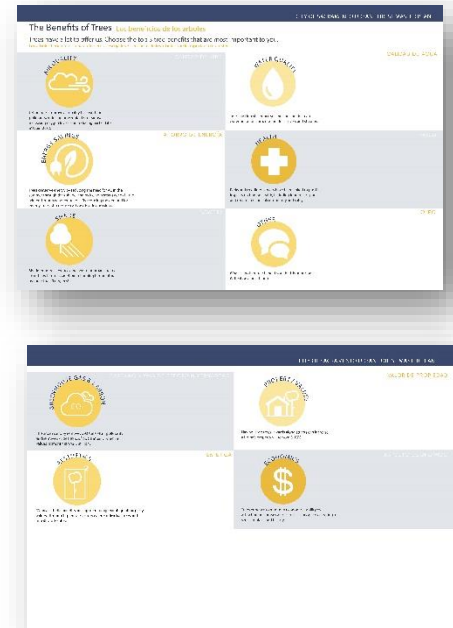
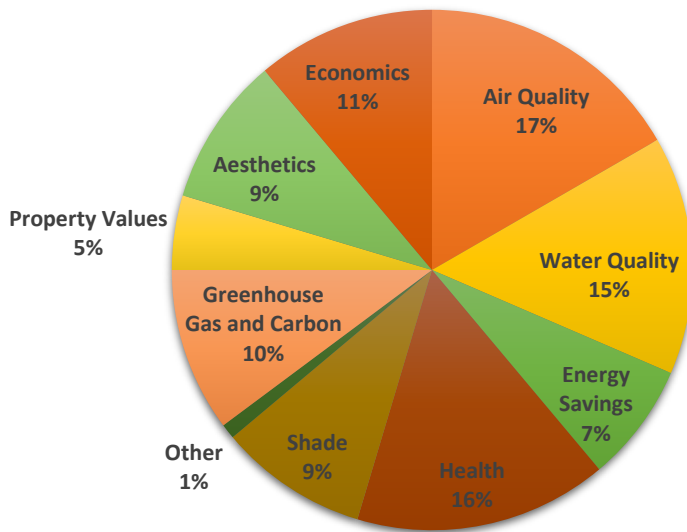
Trees come in all different shapes and sizes. Which trees best fit your neighborhood?



Comments:

- Plant more native trees

Trees have a lot to offer us. Choose the top three benefits that are most important to you?

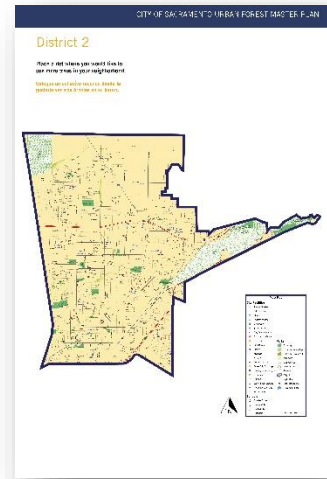


Comments:

- Greenhouse gas reduction helps with the future

Where would you like to see more trees in your neighborhood?

No input received.



District 3

The project team held three pop-up workshops in District 3, with the help of the project’s Tree Partner, Sacramento Tree Foundation, at Councilmember Jeff Harris’ Food Truck Mania event at Glen Hall Park, a Sacramento Tree Foundation Mulching event at Gardenland Park, and a Sacramento Tree Foundation Planting Workshop at the South Natomas Community Center.

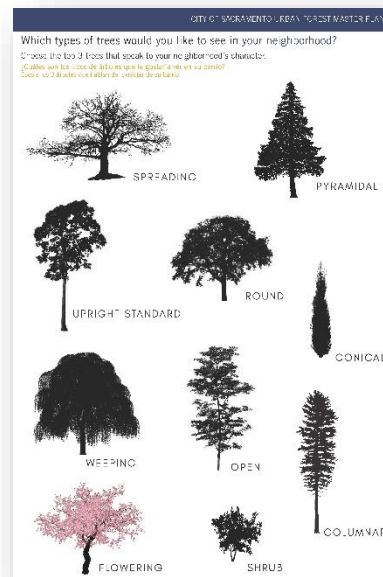
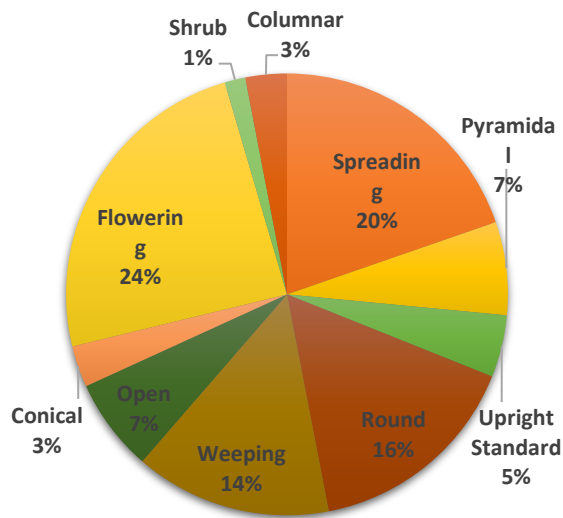
- Food Truck Mania: Friday, August 10
- Mulching Event: Saturday, August 18
- Tree Planting Workshop: Saturday, October 6



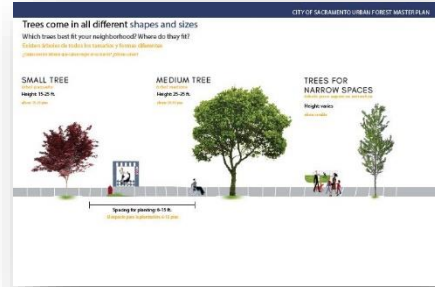
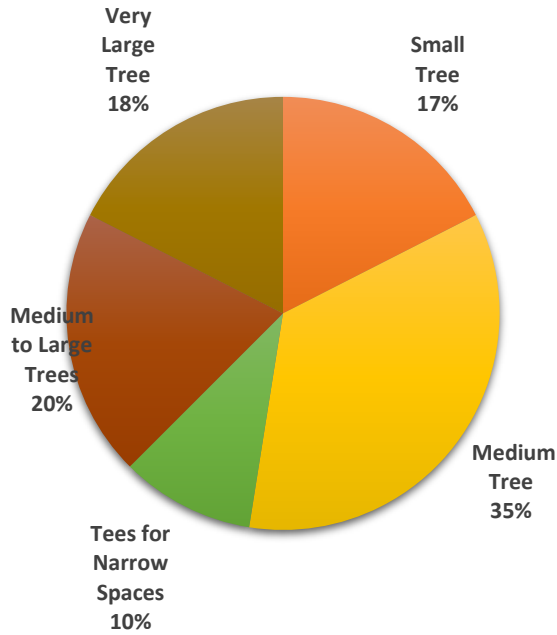
The project team received input from more than 60 community members from all pop-up workshops.

Below is a compilation of feedback received from District 3.

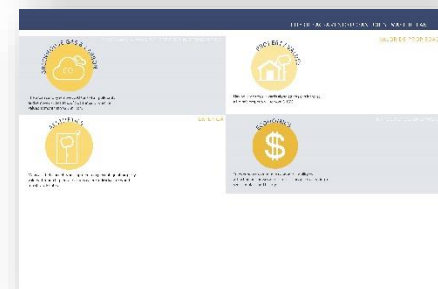
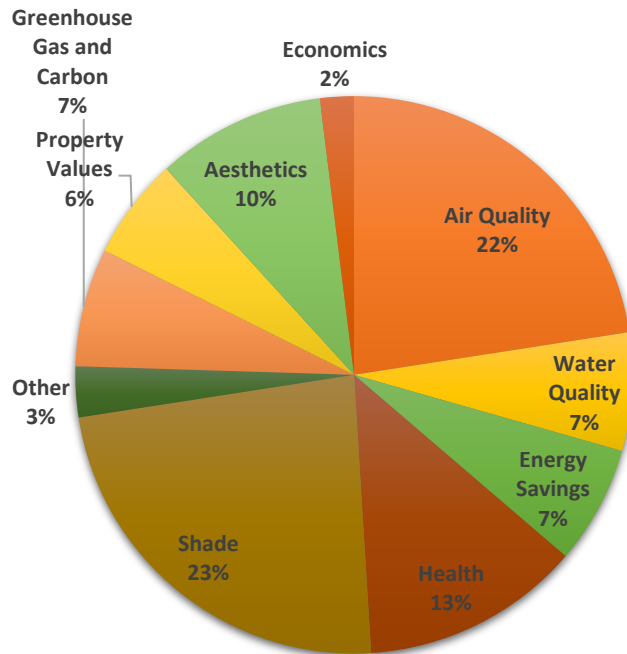
What types of trees would you like to see in your neighborhood?



Trees come in all different shapes and sizes. Which trees best fit your neighborhood?



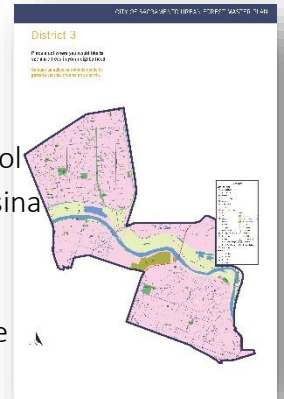
Trees have a lot to offer us. Choose the top three benefits that are most important to you?



Where would you like to see more trees in your neighborhood?

- Intersection of Nordyke Drive and Winter Garden Avenue
- Northgate Park
- South Natomas Community Park
- Cal Expo
- Sutter's Landing Regional Park
- Northgate Boulevard and Haggin Avenue
- McKinley Park
- Glen Hall Park
- Sandburg Drive
- Caleb Greenwood Elementary School

- Elvas Avenue
- J and 51st Street
- East Portal Park
- Kit Carson Middle School
- Carlson Drive and Messina Drive
- Gardenland park
- West El Camino Avenue
- Winds Parkway
- Northgate Boulevard



District 4

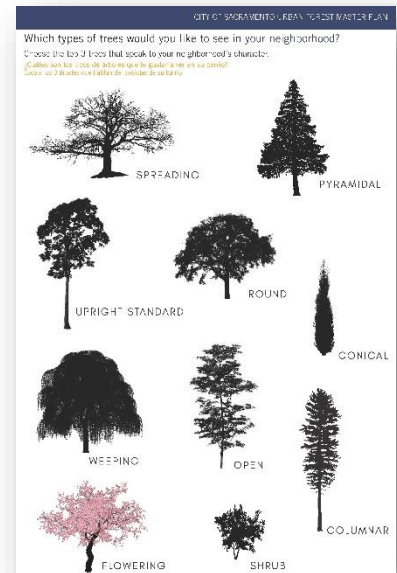
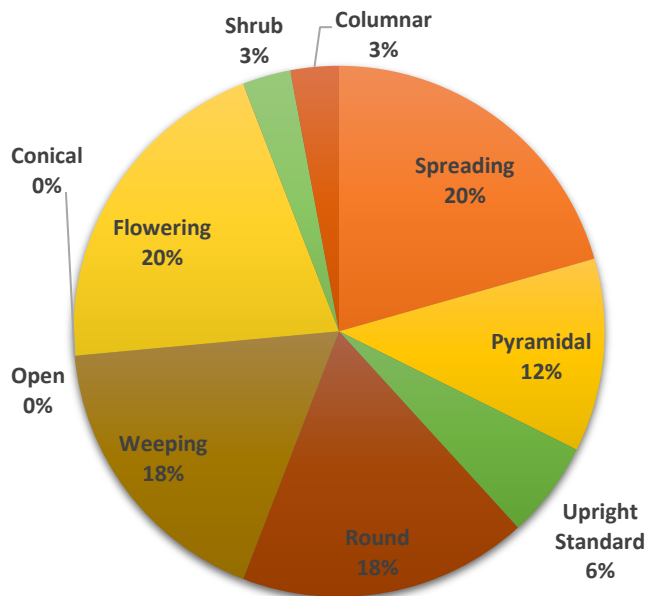
The project team held one pop-up workshop in District 4, at the Saturday morning Midtown Farmer’s Market, on 20th Street between J and K Streets in Downtown Sacramento.

The project team received input from around 25 community members from this pop-up workshop.

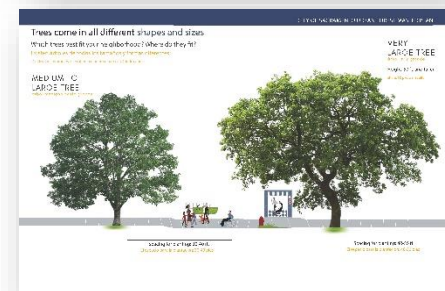
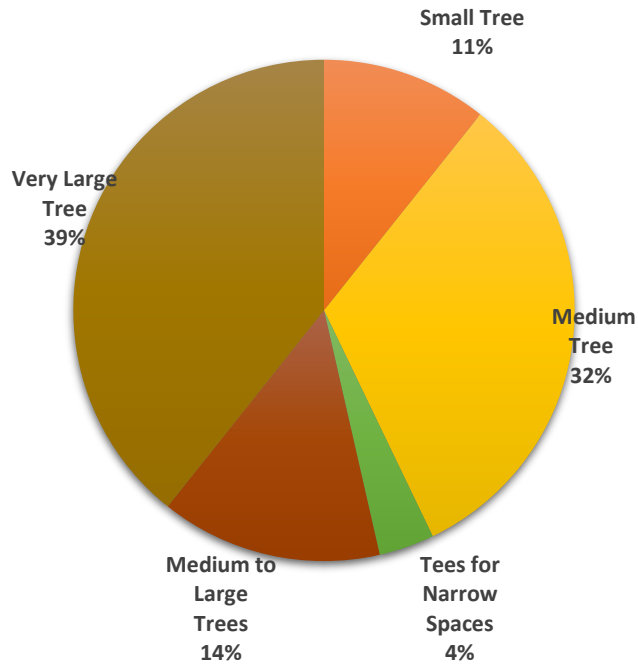
Below is a compilation of feedback received from District 4.



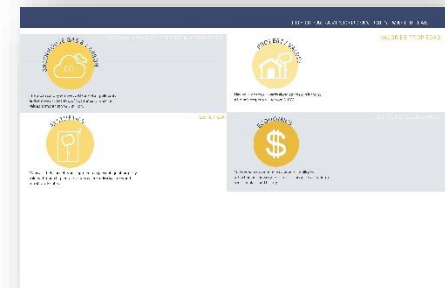
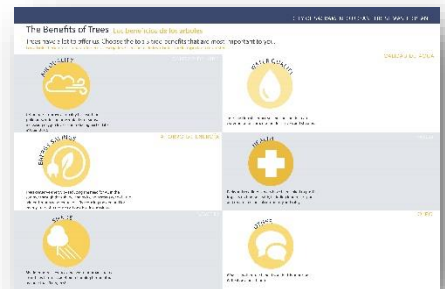
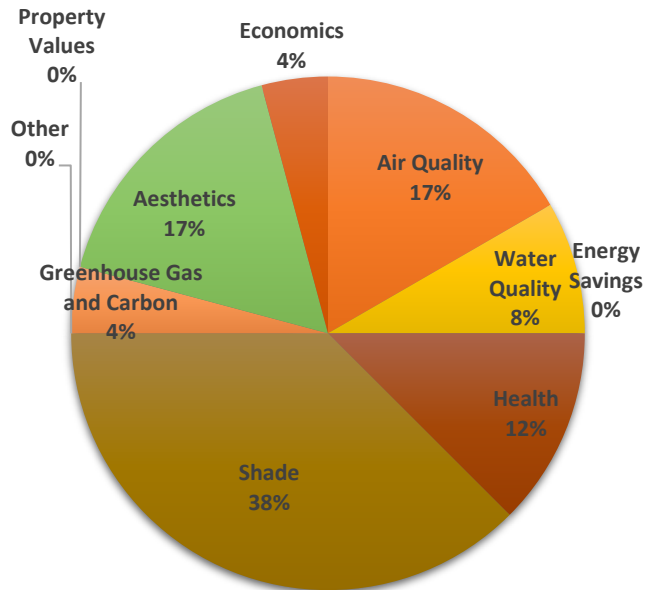
What types of trees would you like to see in your neighborhood?



Trees come in all different shapes and sizes. Which trees best fit your neighborhood?

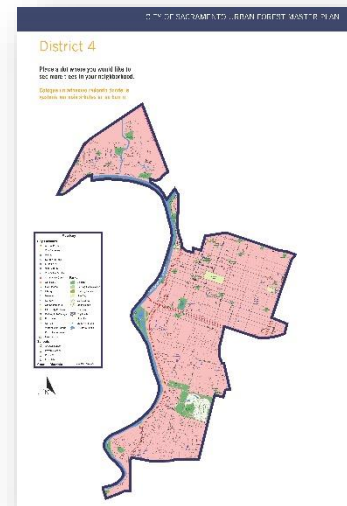


Trees have a lot to offer us. Choose the top three benefits that are most important to you?



Where would you like to see more trees in your neighborhood?

- West El Camino Avenue
- Gateway Oaks Drive: Natomas Oak Park
- G and 26th Street
- Front Street under I-80
- 3rd Street, Leataata Floyd School
- Broadway and 17th Street
- S and 19th Street



Additional Comments

- Oak Park needs trees
- North Highlands needs more trees
- At the post office downtown, a tree died, was removed and nothing was re-planted.
- Freeport Boulevard needs trees
- More trees on main streets, i.e. Boulevards



District 5

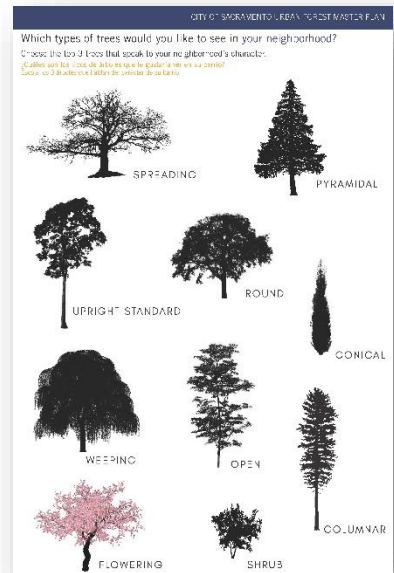
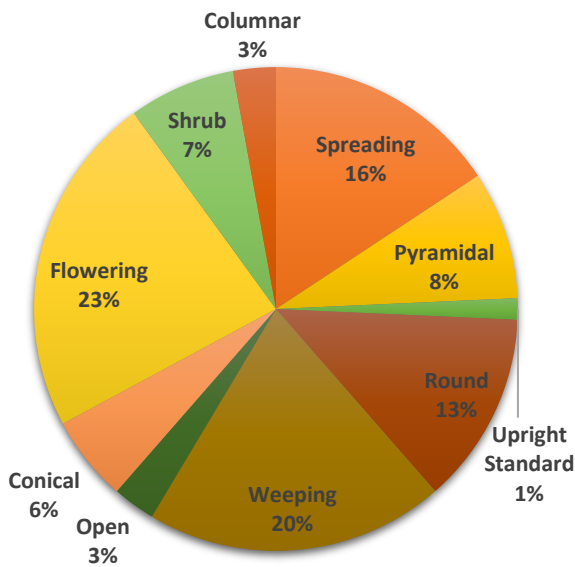
The project team held one pop-up workshop in District 5, at the Saturday morning Oak Park Farmer’s Market, at McClatchy Park on Saturday, September 22.

The project team received input from more than 25 community members from this pop-up workshop.

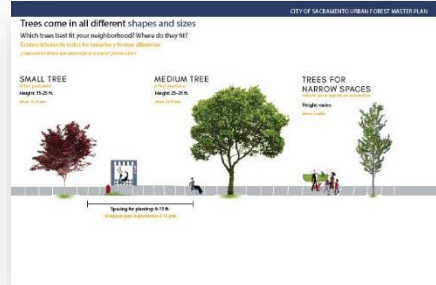
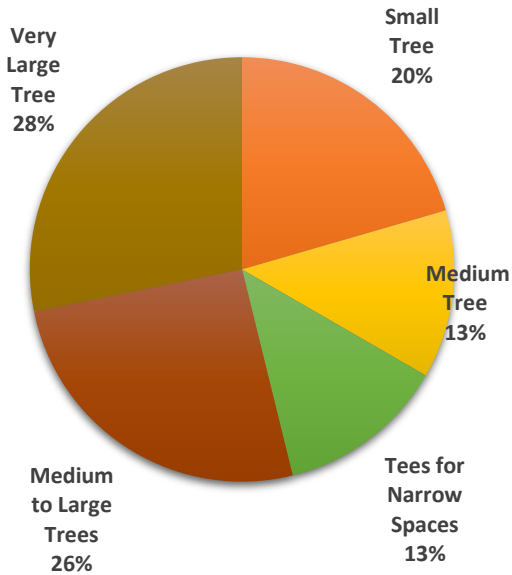
Below is a compilation of feedback received from District 5.



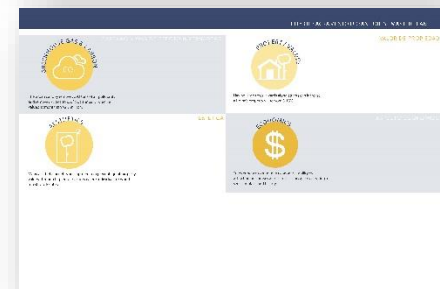
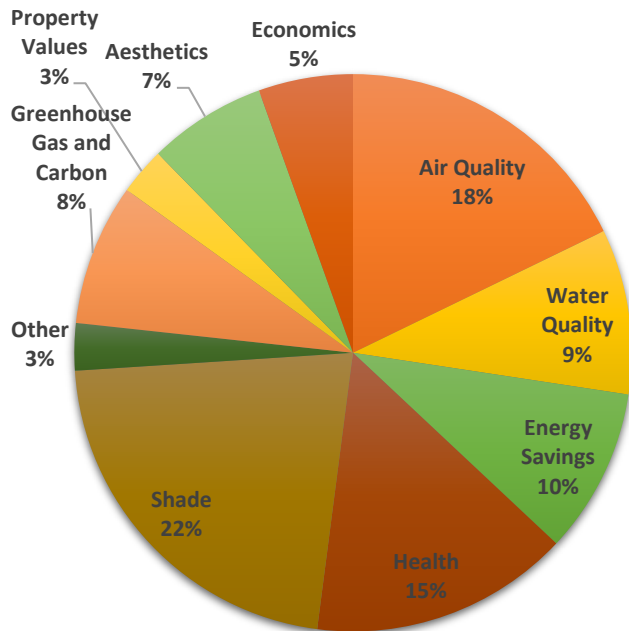
What types of trees would you like to see in your neighborhood?



Trees come in all different shapes and sizes. Which trees best fit your neighborhood?

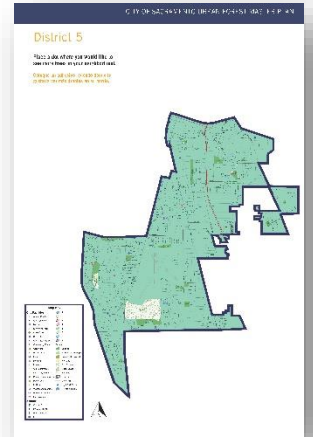


Trees have a lot to offer us. Choose the top three benefits that are most important to you?



Where would you like to see more trees in your neighborhood?

- 3rd Avenue and Santa Cruz Way
- 6th Avenue by C.K. McClatchy Park between 33rd Street and 37th Street
- 20th Avenue and 52nd Street 53rd Street Alley
- 49th Street and Lawrence Drive
- 25th and 25th Avenue between 36th Street and Martin Luther King Jr Boulevard
- 23rd Avenue and 36th Street
- 28th Street and Fruitridge Road
- Norman Way and Fruitridge Road
- Helen Way and Fruitridge Road
- 35th and 38th Avenue and Freeport Boulevard
- Police Station at Blair Avenue and Belleua Wood Lane
- Pony Express School Park at Los Cerros Drive between San Augustine Way and 58th Avenue
- Woodfield Avenue and South Land Park Drive
- Silver Oak Way and Mooncrest Way



Additional Comments

- Trees at public libraries.
- Along Freeport Boulevard and other major roads (Fruitridge Road, 12th Avenue, Sutterville Road).
- Small to medium trees south of McClatchy Park.
- Near Christian Brothers High School. People walk around a lot there.
- 14th Avenue and Lisetta Avenue. There is a church there and bus stop. Twelve to 15 people ride it, and there is no shade.
- In schoolyards throughout the city.
- Senior community on Broadway.
- 55th Avenue by EDD (Sacramento Job Services).
- Transit stop past Stockton Boulevard.
- By Gerber Road and Florin area



District 6

The project team held three pop-up workshops in District 6 with the help of the Sacramento Tree Foundation. The three events included Councilmember Guerra’s State of the Trees, a Sacramento Tree Foundation Mulching Event, and the District 6 Resource Fair.

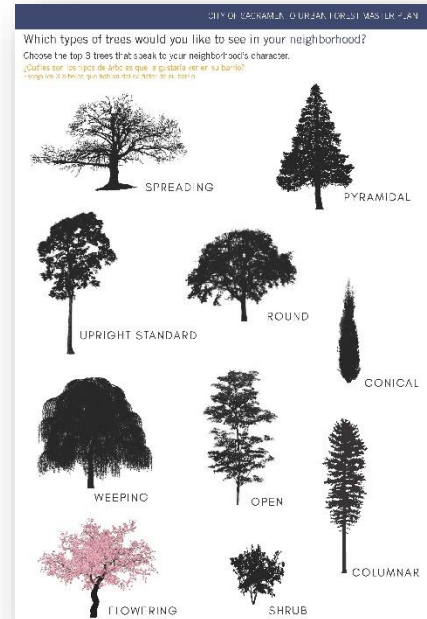
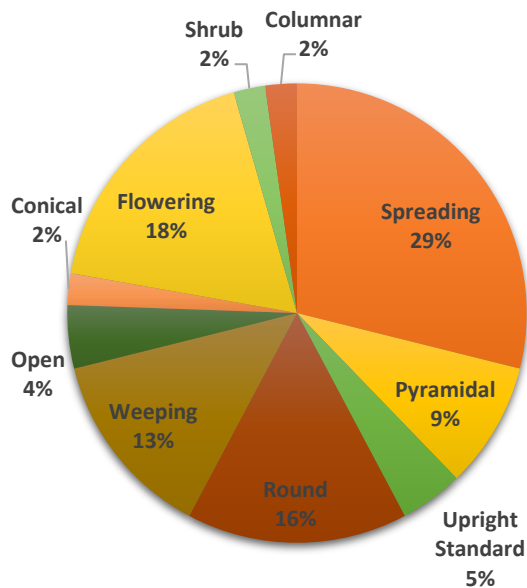
- State of the Trees: Saturday, July 28
- Mulching Event: Saturday, August 18
- Resource Fair: Friday, September 7



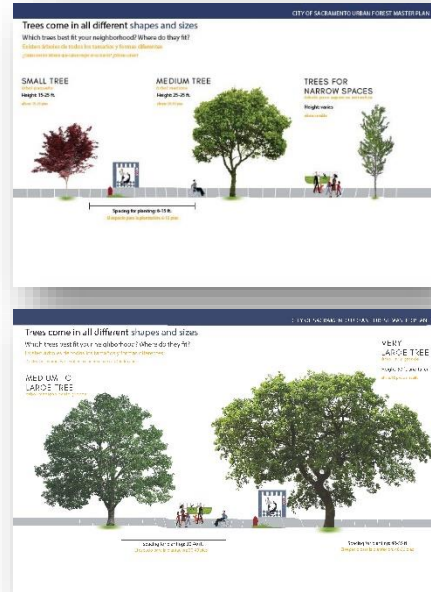
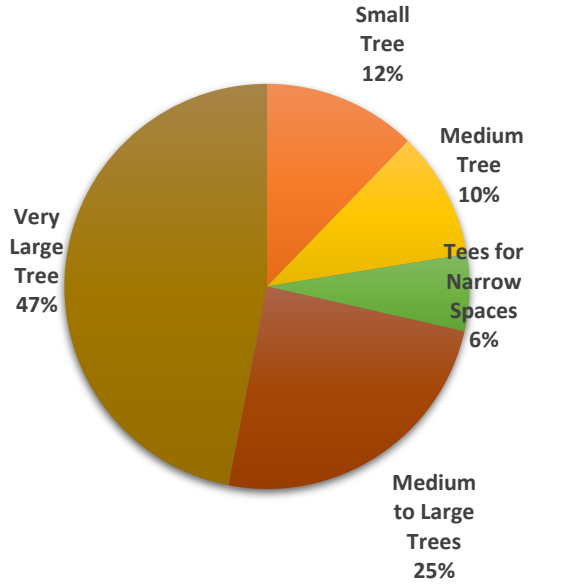
The project team received input from more than 50 community members from all three pop-up workshops.

Below is a compilation of feedback received from District 6.

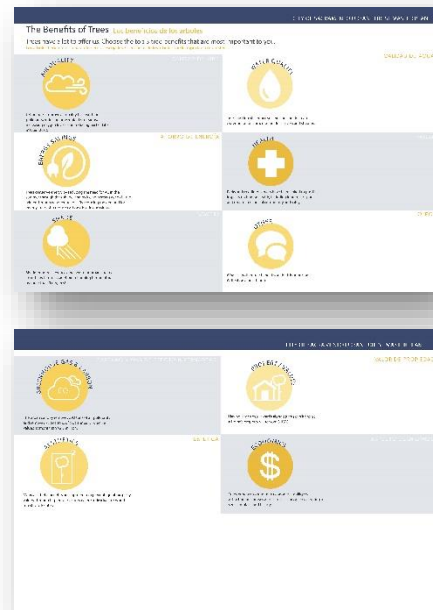
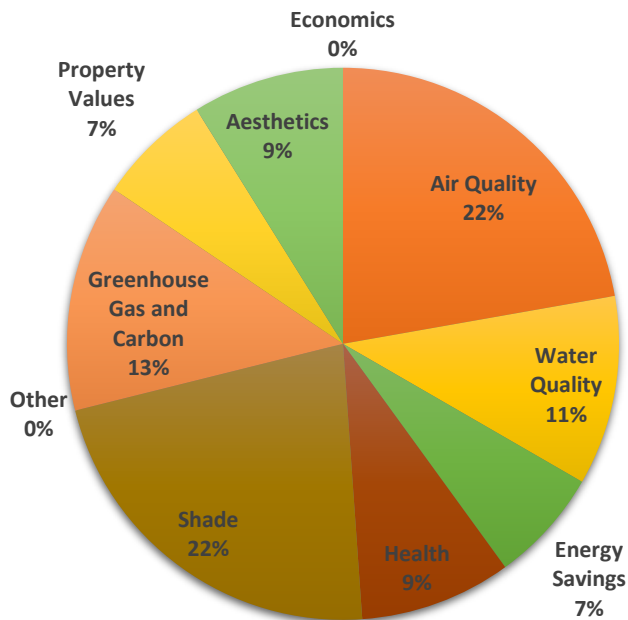
What types of trees would you like to see in your neighborhood?



Trees come in all different shapes and sizes. Which trees best fit your neighborhood?

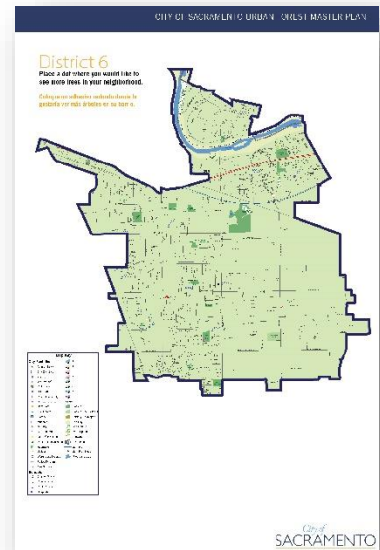


Trees have a lot to offer us. Choose the top three benefits that are most important to you?



Where would you like to see more trees in your neighborhood?

- Fruitridge Road
- Fruitridge and Power Inn
- 21st Avenue and 65th Street Expressway
- 21st Avenue at 20th Avenue
- T Street by the freeway
- Coloma Park
- Tahoe Park
- Hiram Johnson High School
- Power Inn Road and 32nd Avenue
- Power Inn Road and 37th Avenue
- Sun River Drive by George Sims Park
- Camellia Park
- Elder Creek Road



District 7

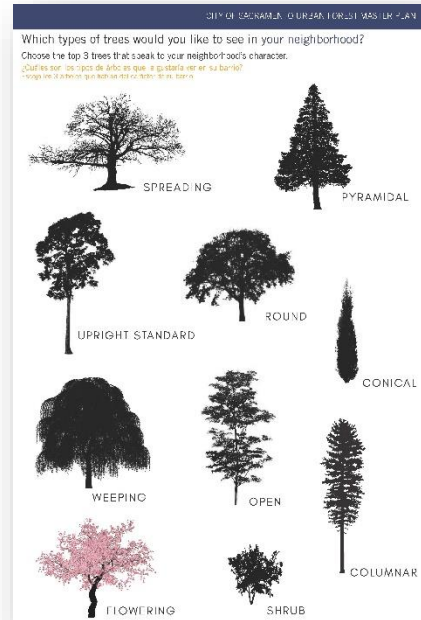
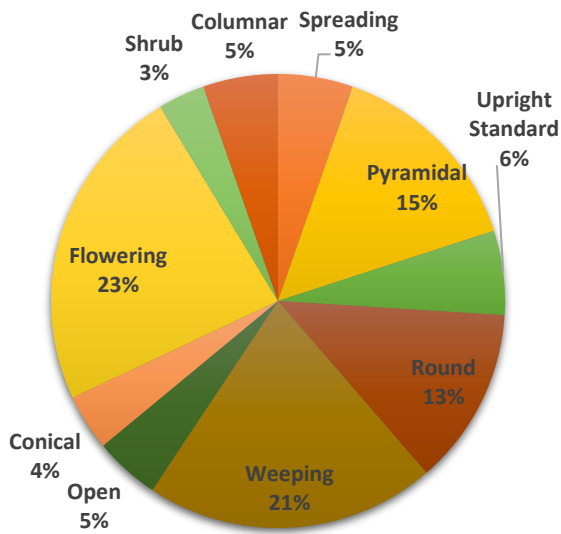
The project team held one pop-up workshop in District 7 at Councilmember Jennings Trucks & Such Foodtruck Mania and Backpack Giveaway, on Friday, August 17, at Garcia Bend Park.

The project team received input from more than 40 community members from this pop-up workshop, including young students and their parents.

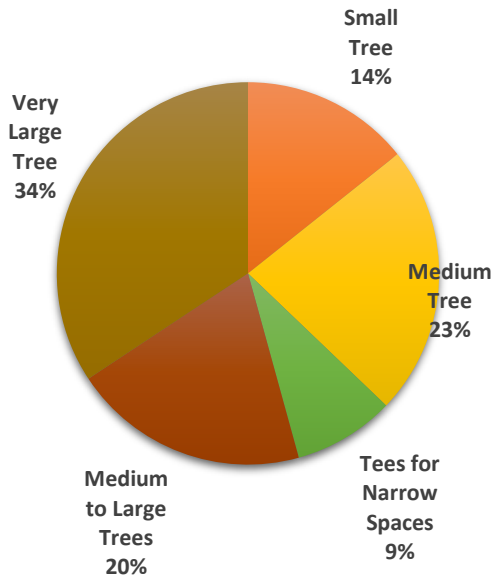
Below is a compilation of feedback received from District 7.



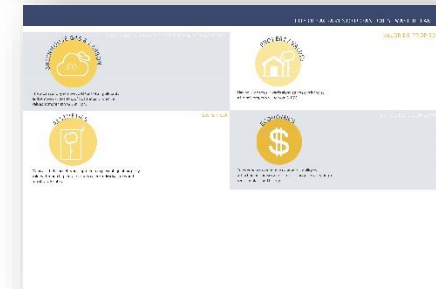
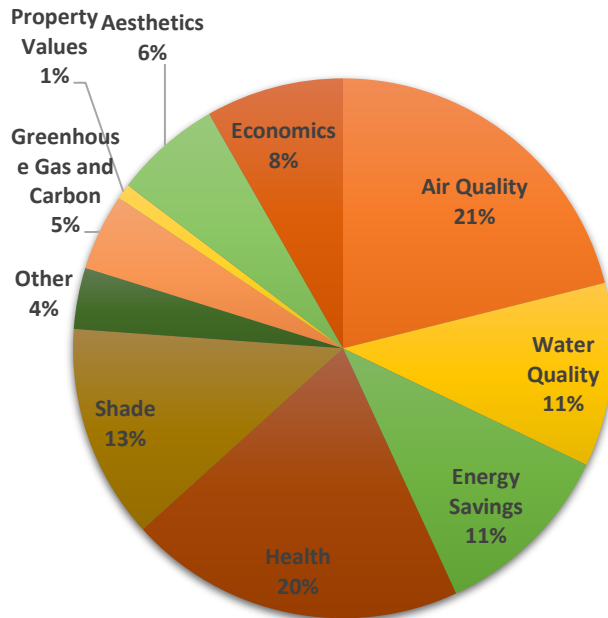
What types of trees would you like to see in your neighborhood?



Trees come in all different shapes and sizes. Which trees best fit your neighborhood?

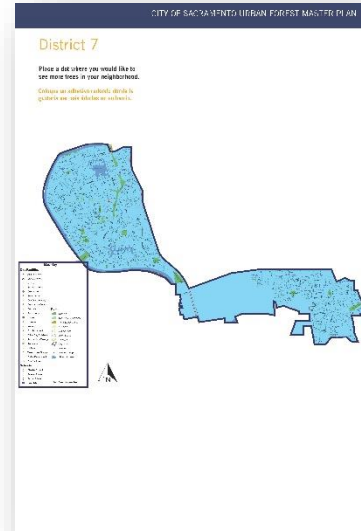


Trees have a lot to offer us. Choose the top three benefits that are most important to you?



Where would you like to see more trees in your neighborhood?

- Riverside Boulevard and Havenside Drive
- School of Engineering and Sciences
- Riverside Boulevard and Pocket Road
- Along the river at Marina Parkway
- Garcia Bend Park
- Gloria Drive and Florin Road
- Rush River Drive by Summerwind Way
- Maryhill Park City Middle School
- South Lan Park Drive and Corporate Way
- Bill Conlin Regional Youth Sports Complex
- Valley Hi Community Park
- Rocklin



District 8

The project team held two pop-up workshops in District 8 with the help of the Sacramento Tree Foundation. The pop-up workshops included the ECOS Council Meeting and the Valley Mack Farmers Market.

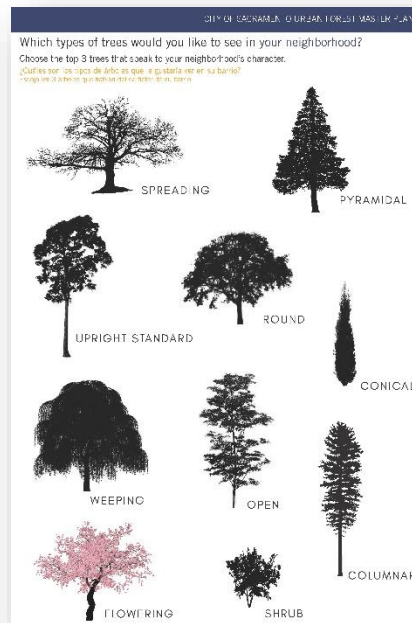
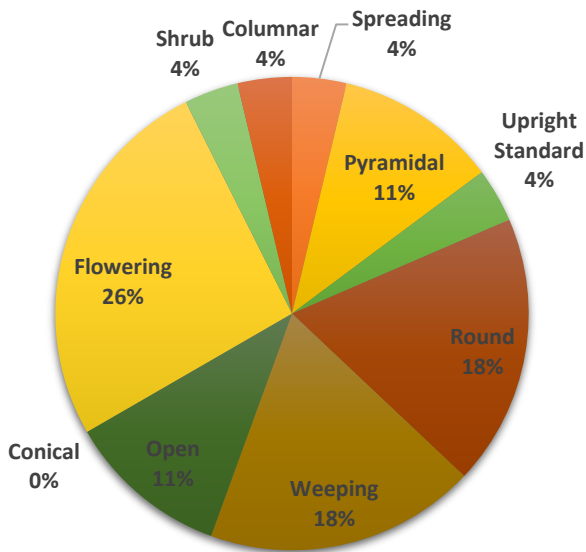
- ECOS Council Meeting: Thursday, September 6
- Valley Mack Farmers Market: Friday, September 7

The project team received input from more than 20 community members from both pop-up workshops.

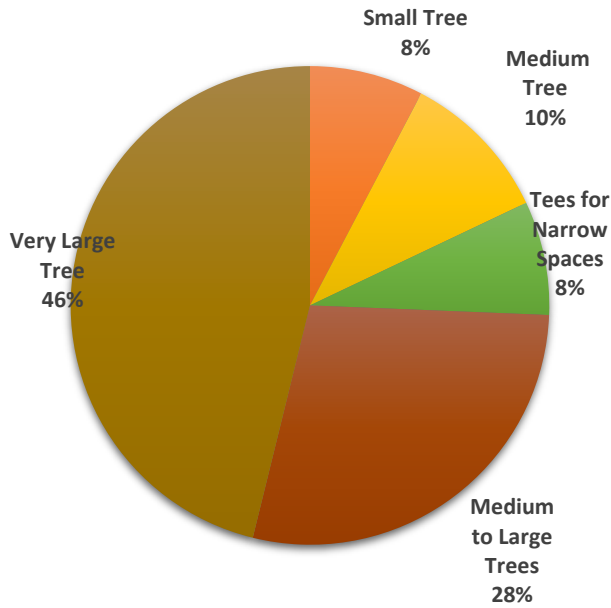
Below is a compilation of feedback received from District 8.



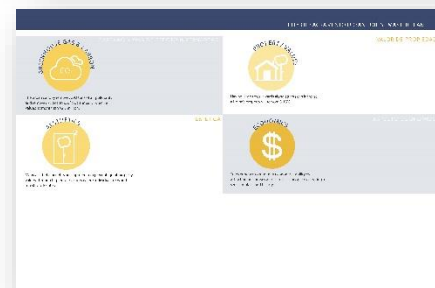
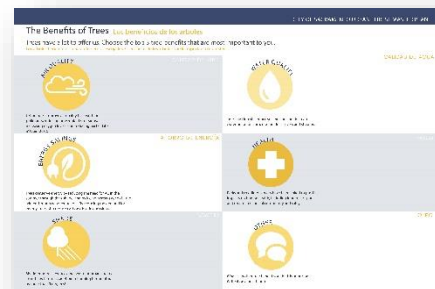
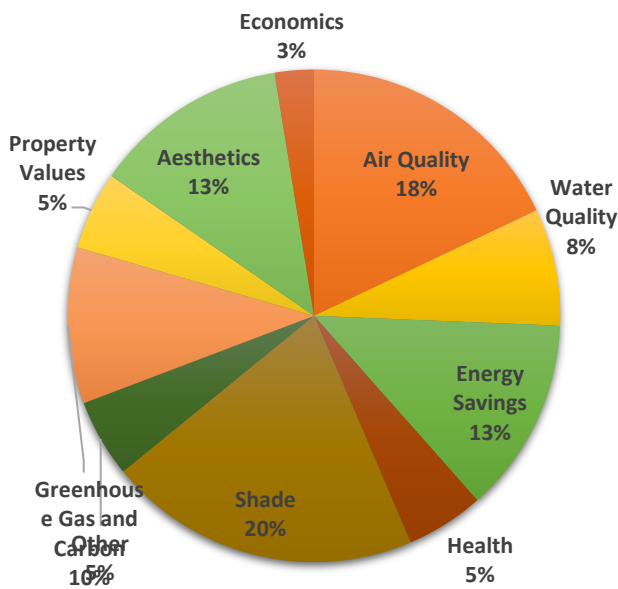
What types of trees would you like to see in your neighborhood?



Trees come in all different shapes and sizes. Which trees best fit your neighborhood?

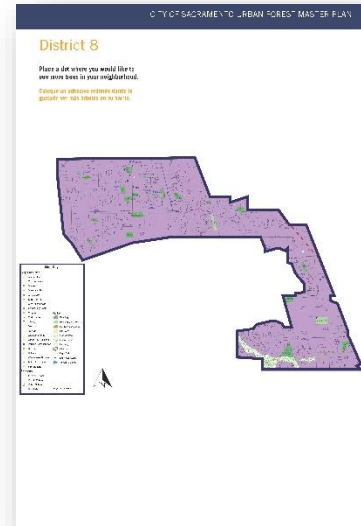


Trees have a lot to offer us. Choose the top three benefits that are most important to you?



Where would you like to see more trees in your neighborhood?

- Beyond Meadowview Road and John Still Drive
- Pannell Meadowview Community Center Park
- Steve Jones Park
- Chesterbrook Drive and Laguna Star Drive
- El Terraza Drive and Gerber Road (Florin, CA)
- 24th Street Bypass Park
- 67th Avenue and 24th Street
- 24th Street and Meadowview Wood Circle
- Manuel E. Silva Park
- Steve Jones Park
- Along Meadowview Road, by the Pannell Center
- John Still Drive



Additional Comments

- Only small trees at Steve Jones Park.
- At the schools.
- Places with grass.
- We have enough trees.



Notification

Each pop-up workshop was advertised through the City of Sacramento’s Urban Forest Project webpage as well as through email notifications sent to the project’s Stakeholder Representative Group and interested community members who signed up for updates through the project website and at the pop-up events with their email. The Sacramento Tree Foundation, which helped the project team hold additional pop-up workshops, also shared information to their organization.

Councilmember Angelique Ashby of District 1, Councilmember Jeff Harris of District 3, and Councilmember Rick Jennings of District 7 shared information about the pop-up workshop series through the promotion of their community events that the project team attended.