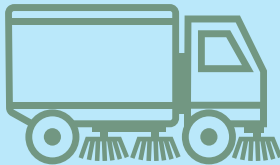
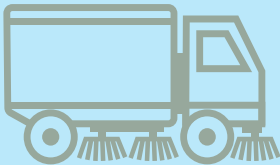
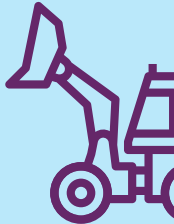
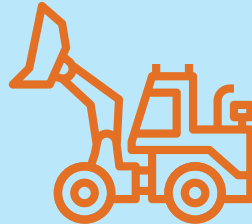
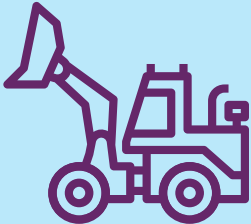




# YOUR GUIDE TO CITY SERVICES



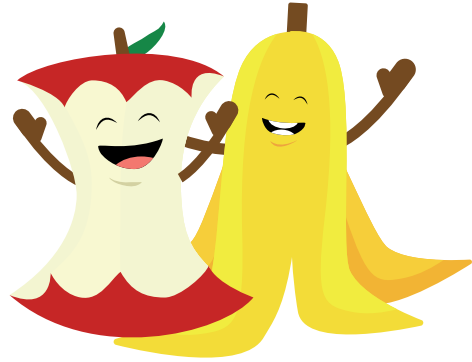
2023-2024

RECYCLE WEEK



# THANK YOU FOR RECYCLING YOUR ORGANICS, SACRAMENTO!

In July 2022, the City of Sacramento launched a new Organics Recycling program. All food scraps, food-soiled paper and yard trimmings now must be placed together in your organic waste container (the green bin). Organic waste is collected weekly for all customers. These materials are diverted from the landfill and processed into nutrient rich compost.



This new service ensures that Sacramento complies with California's aggressive recycling regulations and greenhouse gas (GHG) emissions reduction goals, which require a 75% statewide reduction in organic waste disposal by 2025. Food waste that ends up in landfills generates methane, a particularly potent GHG that significantly impacts climate change. Diverting food waste from garbage to recycling will greatly reduce methane generation.

The good news is our city is off to a promising start. In comparing June through September in 2022 to the same time period in 2021, we saw a 14% increase in organics tonnage collected, and a 10% decrease in garbage collected.

We've also given away nearly 30,000 pails to City residents since last June. We are still giving away pails, one per household while supplies last. Email us at [sacrecycle@cityofsacramento.org](mailto:sacrecycle@cityofsacramento.org) to claim yours.

Convenient pails are also available at a variety of retailers, or you can use a repurposed bowl or container for scraps.



# TABLE OF CONTENTS

General Collection Guidelines	2
Recycling Services	4
Organic Waste Services	6
Service Requests	11
Street Sweeping	11
Leaf Season	12
Drop-off Programs	14
Report Illegal Dumping	16
Appliance & E-Waste Pickup	17
Household Junk Pickup	18
Recycling Used Motor Oil and Filters	19
Service Alerts	20
Recycle Collection Calendar	21

## TAKE OUR ORGANICS SURVEY

We want to know what you think about our Organics Recycling program, launched in July 2022! Please take a short survey to help us understand what you've



learned about recycling organic waste, any challenges you've had participating in the program and how you'd like to be updated about current and future solid waste programs. Once you submit your survey, you will receive a downloadable coupon\* for compostable bags for food waste.

*\*Coupons available for a limited time while supplies last.*





# GENERAL COLLECTION GUIDELINES

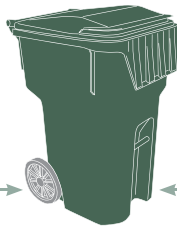
The City of Sacramento provides reliable and consistent curbside collection of garbage, organic waste and recycling for residential properties. Please follow these guidelines to help ensure collection staff can efficiently access your bins:

- **Avoid over stacking** and make sure lids are completely closed
- **Crush and flatten** materials for more space
- **Place containers out by 6 a.m.** on your collection day
- **Place containers three feet apart** and away from any obstructions (cars, boats, basketball hoops, etc.) if possible
- **Avoid contaminating** recycling and organic waste with garbage
- **Please do not bag recyclables**, keep them loose in the bin
- **Keep containers out of bike lanes** whenever possible



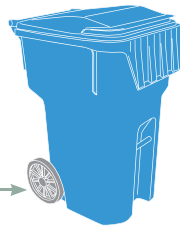
**GARBAGE**  
WEEKLY

← 3' →



**ORGANIC WASTE**  
WEEKLY

← 3' →



**RECYCLING**  
EVERY OTHER WEEK



**DOWNTOWN/MIDTOWN:** Whenever possible, residents in the City Services restricted parking zones should place containers on the curb and not in the street or gutter. If your container is missing a lid, is cracked, or has a broken wheel, go to [sac311.org](http://sac311.org) to order a free repair or replacement.



- Containers should be out for service no earlier than 12 hours before your collection day and should be returned to the storage area on your property within 12 hours of collection.
- The City will alert customers who are not following collection guidelines. Service may be interrupted or a larger/additional container – with an accompanying higher rate – may be mandated for addresses that continually over stack or contaminate their containers.
- Regular collection occurs on holidays.

**CONTAINER SIZES & RATES\***

As of July 1, 2023

Call 311 to change your bin size!

\* Please note monthly rates may be subject to change

**Garbage**

Large – 96 gallon  
\$29.34

Medium – 64 gallon  
\$24.11

Small – 32 gallon  
\$18.31

Additional Large  
\$24.77

Additional Medium  
\$20.98

Additional Small  
\$18.11

**Recycling**

Large – 96 gallon  
\$7.77

Medium – 64 gallon  
\$7.77

Additional Container  
\$2.68

**Organic Waste**

Large – 96 gal.  
\$16.75

Additional Container  
\$5.44



# RECYCLING SERVICES

Not sure if something can be recycled? Check our SacRecycle smart phone app or use the [Waste Wizard](https://www.wastewizard.com) at [sacrecycle.org](https://sacrecycle.org), which will have the most up-to-date information.



**Waste Wizard**  
RECYCLE WISE. SORT SMART.


All California Redemption Value (CRV) containers accepted

## GLASS

- Bottles and jars
- Labels OK
- All colors
- Lids removed
- Rinsed and empty



## PLASTIC

- Plastics 1-7  including:
  - Take-out containers
  - Soda bottles, milk jugs, shampoo bottles, etc.
  - Buckets, pails and crates
  - Laundry baskets



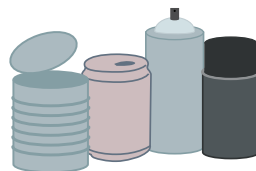
## PAPER

- Cardboard (must be broken down flat)
- Cereal boxes
- Newspapers, magazines, catalogs
- Paper bags
- Paper packaging
- Junk mail
- Books (soft covers, phone books)
- Office paper (all colors)



## METAL

- Aluminum and tin cans
- Aluminum trays and foil (rinsed)
- Empty aerosol cans
- Pots, pans and utensils
- Lids from jars



## TIPS FOR SMART RECYCLING

### Start With Your Home

Set up your household to make recycling easy. Keep recycling waste containers or baskets in strategic locations in your house along with ordinary waste baskets. It is easier to toss recyclables in a separate container than it is to rummage through the trash later to separate everything.



**Play the Waste Sorting Game:** Test your knowledge on proper sorting. Challenge your entire family and earn a certificate. Find the game at [sacramento.recycle.game](https://sacramento.recycle.game).

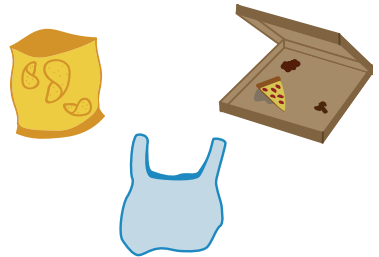
### Avoid Recycling Air

Keep “air” out of the recycle container. Break down boxes, crush cans and jugs. There will be room for more materials and container lids will be able to close properly. Additionally, please do not bag your recyclables, keep them loose in the bin.

**Interested in learning more about services and tips?** Visit the SacRecycle YouTube channel for fun videos at [youtube.com/user/SacRecycle](https://youtube.com/user/SacRecycle).

## PLEASE NO

- Styrofoam or packing peanuts
- Food-soiled paper such as takeout container or plates (many can go in the organic waste container!)
- Plastic shopping bags or plastic wrap



## SORT SMART!

Use the Waste Wizard at [sacrecycle.org](https://sacrecycle.org).



**Waste Wizard**  
RECYCLE WISE. SORT SMART.





# ORGANIC WASTE SERVICES

(Formerly yard/green waste collection)

**Curbside collection of organic waste in containers occurs weekly on your regular collection day.** All residential properties in the City of Sacramento must use containers for organic waste collection. Leaf season, which occurs November – January is the only time that leaves and yard trimmings may be placed out on the street (see pages 12-13). **At no time should food scraps and food-soiled paper be included in yard waste piles that are part of leaf season.**

Customers who need additional organic waste service can order an additional container online at [sac311.org](https://sac311.org).

## ✓ ACCEPTABLE ORGANIC WASTE MATERIALS FOR CURBSIDE CONTAINER SERVICE



**Leaves**



**Tree and Shrub Prunings**  
(limbs must be cut to 3 feet in length or less and no more than 4 inches in diameter)



**Grass Trimmings**



**Sod**  
(with dirt removed)



**Food Waste**  
(see page 8 for a list of acceptable food waste products that can be added to the organics container — formerly your yard/green waste container)



**Food-soiled Paper**

## ⊘ UNACCEPTABLE ORGANIC WASTE MATERIALS



**Trash and debris**



**Hoses, lumber and concrete**



**Pet feces**  
(put in garbage)



**Tree stumps and limbs**  
(more than 4 inches in diameter)



**Excessive amount of sand, dirt or gravel**



Where do these things go?  
Find out with  
**Waste Wizard**  
RECYCLE WISE. SORT SMART.

# Organics Recycling makes a difference



**Californians throw away nearly 6 million tons of food scraps each year.** This food makes up 15-20 percent of all landfilled material and is a major reason why landfills create methane, a greenhouse gas over 80 times more potent than carbon dioxide.



**When organic matter is turned into compost or mulch, it creates healthy soil,** conserves water, reduces erosion and reduces greenhouse gas emissions.

California State Senate Bill (SB) 1383 aims to reduce short-lived climate pollutants which produce methane, one of the fastest growing greenhouse gases in the atmosphere. Human activity, including agriculture, fossil fuels, and food waste is responsible for 2/3 of methane emissions.

Methane emissions cause air pollution, which can have negative effects on our respiratory systems, hearts and lungs. It's estimated such pollution causes over 1 million premature deaths annually.

The good news? Methane does not last long in the atmosphere, which means your efforts to reduce it can bring immediate benefits to human health and our climate.

Thank you for doing your part to reduce methane emissions by recycling your organics. Every time you dispose of your organic waste in the green bin, you are making a difference for your community and our planet.

For more information on SB 1383 visit [sacorganics.org](http://sacorganics.org).



# ORGANIC WASTE SERVICES

## WHAT GOES IN THE ORGANIC WASTE CONTAINER



- Fruit & vegetable scraps
- Bread, grains & pasta
- Coffee grounds
- Dairy products & eggshells
- Meat & bones
- Fish & shellfish
- Leftover food
- Coffee filters & paper tea bags
- Greasy pizza boxes
- Paper plates & takeout boxes (uncoated, no plastic or wax lining)
- Paper towels & napkins
- Wine corks (natural)

### Don't contaminate!

Please remove all plastic and other wrapping from fruit and veggie scraps.

### Not sure if something goes in the organics container?

Download the free **SacRecycle app**, available for iPhone and Android.

For more Organics Recycling tips check out our video series on the dos and don'ts of disposing common household and workplace items by following the QR code.



## WHAT DOESN'T GO IN THE ORGANIC WASTE CONTAINER



- Plastic & plastic bags
- Liquids
- Pet waste
- Cat litter
- Diapers
- Diseased plants
- Treated or painted wood
- Styrofoam
- Wax-coated or plastic-lined takeout containers & cups
- Wax- or foil-lined paper cartons (including juice, soup & soy milk-type boxes)
- Single-use utensils
- Single-use coffee pods
- Ash or dirt

## How to recycle your food waste

Use a small container or bowl to collect your food scraps. You can store it on your counter, under the sink, or in the refrigerator or freezer. When your indoor container is full, dump the contents in your curbside organic waste container — do this the night before your collection day if possible.



## Tips for preventing odor and pests

There are easy things you can do to keep your organics recycling odor and pest free both indoors and outdoors:



### INDOORS

- **Drain excess liquid** from food waste before discarding
- **Freeze/refrigerate scraps** before adding to the organic waste container
- **Wash container frequently** with soap and water
- **Sprinkle the inside with baking soda** to control odors

**Use a compostable plastic or brown paper bag** to contain the scraps for disposal, or line container with food-soiled paper or newspaper. To be considered compostable, the bag must either be “BPI”-certified compostable or meet the “ASTM D6400” standard. For more information visit [sacorganics.org](http://sacorganics.org).

### OUTDOORS

- **Layer items like grass, tree trimmings,** etc. on the bottom of your curbside container before adding food waste



# ORGANIC WASTE SERVICES



## Minimize the use of your garbage disposal

Garbage disposals increase waste that has to be treated at wastewater treatment plants, clog sewer lines and increase the amount of water used in your home.



## Why are compostable utensils and plates not allowed in the organics container?

There are many different methods to creating nutrient rich compost from organic material. Single-use utensils, plates and takeout containers labeled compostable require a high-temperature process to break the items down. This type of processing is not yet available in the Sacramento region.



## Still need a kitchen pail?

Contact [sacrecycle@cityofsacramento.org](mailto:sacrecycle@cityofsacramento.org) to request a kitchen pail. They're free while supplies last!



**Kitchen Pail Giveaway**



**Yolo County Composting Facility**





# SERVICE REQUESTS

We're here for you! Requests for services are at your fingertips 24 hours a day through the **Sac311** app and **sac311.org**.



Use the **Sac311** app for iPhone or Android



Make an online request at **sac311.org**

## SCHEDULE A PICK-UP FOR:

- Household junk
- Appliance and e-waste
- Motor oil and filters

## FIX OR REPLACE FOR FREE:

- A broken or missing garbage, organic waste or recycle container

## REPORT:

- A missed pickup (collection occurs between 6 a.m. and 2 p.m.)  
*Note: Missed pickups should be reported within two business days or collection may not occur until the next regular collection day.*

## STREET SWEEPING

Street sweeping not only keeps streets looking neat, it also prevents debris from entering storm drains, causing street flooding and damage to our waterways.



City streets are swept monthly from February through October. The schedule may be subject to change, and the City's online collection calendar includes up-to-date street sweeping days for each service address. To make sure you won't miss a sweeping day, register to receive a text or email alert the day before service occurs by using the **SacRecycle** app or visiting **sacrecycle.org**. Click on "Collection Calendar" to see when your street will be swept.



# LEAF SEASON

**Residential customers who live on public streets can legally place yard waste piles in the street for collection during the City’s designated leaf season of November 2023 – January 2024.**

Residents will receive at least seven on-street collections during leaf season. Weekly curbside collection of containerized yard waste continues during leaf season. Residents are urged to continue to use the weekly container service along with on-street collection.

Leaf piles can include any acceptable yard waste materials from page 6 except food waste and food-soiled paper. Food scraps and food-soiled paper must never be placed in yard waste piles, only dispose of these in the organic waste container.

## CLAW SCHEDULE

From November 2023 through January 2024 visit [sacreycle.org](https://www.sacreycle.org) or check our free **SacRecycle** app on your smart phone to get an estimate of when the next pile collection will occur for your neighborhood. **All piles need to be on the street by Monday, January 29, 2024 for the last collection.**

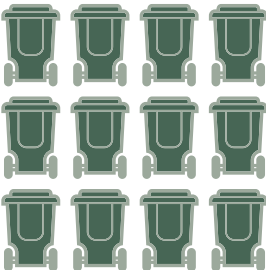


**FIRST DAY OUT**  
**November 1, 2023**

**LAST DAY OUT**  
**January 29, 2024**



Recycling & Solid Waste stops by **13 times** to collect containers



and **7 times** with the claw in the same time period.



## TIPS FOR PREPARING YOUR YARD WASTE:

**1** Fill the container first



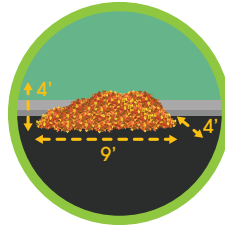
**2** Then pile



More than 61 million pounds of yard waste is collected during leaf season and almost half that material is picked up during weekly container service. **We can remove material off the street faster when residents use both the container and the pile.**

## HAVE A PILE WITH STYLE!

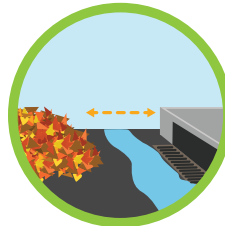
**1** Piles may not be more than 4ft x 4ft x 9ft per household



**2** Place the pile six feet from any obstruction (cars, boats, basketball hoops, etc.) and out of bike lanes



**3** Make sure there is space between the curb and the pile to allow water to flow to storm drains



**4** Do not put leaves in plastic bags



**5** Never put food waste or pet waste in a pile



# DROP-OFF PROGRAMS

## HOUSEHOLD HAZARDOUS WASTE

Products such as paint, cleaners, oil, batteries and pesticides require special care and may not be thrown in your residential waste containers. These products may contain corrosive, toxic, ignitable or reactive ingredients and are considered Household Hazardous Waste (HHW).



### ✓ ACCEPTED HOUSEHOLD HAZARDOUS WASTE

- Most products labeled DANGER, CAUTION, WARNING, FLAMMABLE, or POISON
- Acids
- Aerosol cans
- Antifreeze
- Automotive products
- Batteries
- Brake/transmission fluid
- Car batteries (lead acid/car, 6 volt or more, maximum of 2)
- Electronic waste (computer monitors and televisions)
- Fluorescent lamps/tubes
- Gasoline and other flammables
- Herbicides
- Household batteries
- Household cleaners
- Kitchen oils
- Mercury thermometers
- Paint thinners
- Paints (oil-based or latex)
- Pesticides
- Pool chemicals
- Propane cylinders
- Sharps (needles, lancets) **REQUIRES SPECIAL HANDLING (see Sharps to the right)**
- Used motor oil and filters
- Solvents

Household Hazardous Waste can be taken to the following locations, free of charge (maximum of 15 gals or 125 lbs. per trip):

#### CITY OF SACRAMENTO

Sacramento Recycling and Transfer Station HHW Facility

8491 Fruitridge Road, Sacramento, California 95826

(916) 379-0500 / Tuesday-Saturday / 8 a.m.-5 p.m.

#### SACRAMENTO COUNTY

North Area Recovery Station HHW Facility

4450 Roseville Road, North Highlands, California 95660

(916) 875-5555 / Tuesdays, Thursdays, Fridays and Saturdays / 8:30 a.m.-4 p.m.

#### City of Elk Grove Special Waste Collection Center (SWCC)

9255 Disposal Lane, Elk Grove, California 95624

(916) 627-3232 / Sunday-Wednesday / 9 a.m.-4 p.m.



**Drop-off Locations for Residential Household Batteries:**

City Hall and many city community centers serve as drop-off locations for household batteries. For a complete list, visit [sacrecycle.org](http://sacrecycle.org).



**Sharps (needles, lancets):** Hypodermic needles, pen needles, intravenous needles and lancets require special handling. Place them in an approved sharps container or use a strong plastic container that has a small opening on top with a screw cap lid to prevent spills. Examples include: a plastic bleach jug, plastic liquid detergent bottle or plastic milk jug. They can be taken to a HHW facility. Call **311** or visit [sacrecycle.org](http://sacrecycle.org) for information on safe disposal.



**Paints (oil-based or latex):** Many retailers now take back the products they sell. Get complete details at [PaintCare.org/locator](http://PaintCare.org/locator)

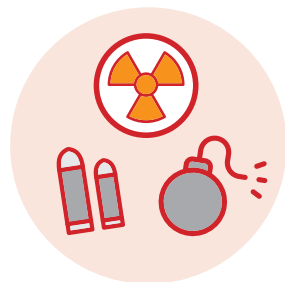


**Unused Medications:** Medications should never be flushed down the toilet. To find convenient drop-off locations in Sacramento and Yolo Counties go to [DontRushtoFlush.org](http://DontRushtoFlush.org).



**UNACCEPTABLE HOUSEHOLD HAZARDOUS WASTE**

- Ammunition
- Asbestos
- Compressed gas cylinders (except propane)
- Contractor or business waste (must call to make an appointment)
- Explosives
- Infectious waste
- Medical waste (except sharps)
- Radioactive materials





# REPORT ILLEGAL DUMPING



**Report Illegal  
Dumping**  
SEE • REPORT • CALL 311

## SEE IT – REPORT IT

If you see a pile of junk or debris on the street – **don't wait** – report it. **Call 311** or **(916) 264-5011**, or use the **Sac311** app for iPhone or Android. The faster it is reported, the sooner enforcement and removal can begin. Provide an accurate location with an address or cross street.



## DUMPING IN PROGRESS

If you witness dumping in progress note the license plate, vehicle make and model, and description of individuals involved in the dumping and **immediately call 311 to file a report.**



### CASH REWARDS PROGRAM

The City offers \$500 to \$1,000 to citizens providing information about illegal dumpers, **which results in either a citation or an arrest and conviction.** Call **311** if you have information that can be used to catch illegal dumpers.

Citizens who report illegal dumpers can remain anonymous but must sign a sworn statement to be eligible for the reward.

More information on the rewards program can be found at [www.cityofsacramento.org/illegal-dumping-rewards](http://www.cityofsacramento.org/illegal-dumping-rewards)



## CONVENIENT SERVICES AT YOUR DOOR

You can schedule **all RSW appointment services** at [sac311.org](http://sac311.org), by using the **Sac311** app or by calling **311**. Please note, different equipment and crews are used to collect appliances and junk.

**Appliances and household junk will most likely be picked up on different days, which may not be your standard collection day.** If you plan to schedule both at the same time, please make an appointment for each.

To request an appointment for either household junk or appliances and e-waste, do one of the following:



Make an online request at [sac311.org](http://sac311.org)



Use the **Sac311** app for iPhone or Android



Call **311** or **(916) 264-5011**

## APPLIANCE & E-WASTE PICKUP COLLECTION AVAILABLE YEAR-ROUND

All residential customers can schedule **two appointments** for appliance and e-waste collection in a calendar year.

These appointments are in addition to the two scheduled household junk appointments offered February – October.



The City will collect up to **two major appliances** per pickup:

- Washers
- Dryers
- Refrigerators

Up to **four e-waste items**:

- TVs
- DVD players
- Computers
- Monitors
- Printers, etc.

**There is a minimum weight of at least 10 pounds per pickup. Items should be placed out no more than 24 hours in advance of your scheduled appointment.** Items placed out prior to this are considered illegal dumping and fines may be issued. Items should be placed at the end of the driveway, visible and easy to access.



# APPOINTMENT PROGRAMS

## HOUSEHOLD JUNK PICKUP



All residential customers can schedule **two appointments** – between February and October – for the free pickup of acceptable bulky items, **including excess yard waste**. **Note**, appointments are no longer being accepted in mid- to late-October to accommodate leaf season. The City will collect up to **five cubic yards** of material (4ft x 4ft x 9ft) per appointment, which is approximately the amount that will fit in the bed of a pickup truck.

Extra charges may apply if the load exceeds five cubic yards. **Do not place junk out for collection more than 24 hours before your appointment, or without an appointment.** Doing so will be considered illegal dumping and fines may be issued. For questions call **311** or **(916) 264-5011**. If you provided your email address to 311 when you made the appointment, check your email for confirmation and details about your appointment.

Appliances require a separate appointment and should not be put out with a junk appointment. See page 17 for the Appliance & E-Waste Pickup program.

### WHAT CAN I PUT OUT FOR PICKUP?

#### ✓ ACCEPTED

- Furniture
- Mattresses
- Carpet
- Toys
- Pipe (up to 6ft)
- Wood/lumber (up to 6ft)
- Unmounted tires (up to 4)
- Car rims (up to 4)
- Yard waste

#### ⊘ NOT ACCEPTED

- Appliances/E-waste\* (See page 17 for appliance disposal)
- Hazardous waste\*
- Explosives
- Radioactive material/Biohazards
- Gas canisters\*
- Paint\*
- Construction debris (i.e. dirt, rock, rubble, concrete)
- Tires still mounted on the rim



### STILL NOT SURE? CHECK THE WASTE WIZARD!

Check our SacRecycle smart phone app or use the [Waste Wizard](https://www.sacreecycle.org) at [sacreecycle.org](https://www.sacreecycle.org).

\*These items can be taken to the City's Household Hazardous Waste Facility, located at the Sacramento Recycling and Transfer Station, 8491 Fruitridge Road, Sacramento, California 95826.



# RECYCLING USED MOTOR OIL AND FILTERS



Motor oil poured onto the ground or into storm drains, or tossed into trash cans (even in a sealed container) can contaminate and pollute the soil, groundwater, streams, and rivers.

## THERE ARE THREE CONVENIENT WAYS TO RECYCLE USED MOTOR OIL AND FILTERS FOR FREE:

- 1 Certified Collection Centers (CCC) such as Autozone, Jiffy Lube, O'Reilly Auto Parts, Pep Boys and others will take used motor oil from the public and may pay you 40¢ a gallon by request. Most centers will take up to five gallons at a time.
- 2 Take used motor oil and filters to the Household Hazardous Waste Facility located at the Sacramento Recycling and Transfer Station HHW Facility (see page 14).
- 3 City of Sacramento residents can schedule a Curbside Used Oil and Filter Recycling Appointment.

## CURBSIDE USED OIL AND FILTER RECYCLING BY APPOINTMENT:

- 1 Go to [sac311.org](https://www.sac311.org) or use the **Sac 311** app for iPhone or Android to schedule an appointment for collection. Appointments can be scheduled up to 24 hours before the next regularly scheduled recycling day. Maximum of two gallons per appointment.
- 2 Place used motor oil in a clear one gallon jug with screw on lid. Secure lid with tape.
- 3 Place oil filter in a sealable plastic bag (Ziploc or use twist ties).
- 4 Place items on edge of your driveway, close to the sidewalk, so they are visible by 6 a.m. on your appointment day.

**Note:** NEVER contaminate used oil by mixing with other auto fluids or water.



# SERVICE ALERTS



## DOWNLOAD THE APPS

Download the [SacRecycle](#) app for easy access to collection information including what can be recycled and how to manage plastic and hazardous waste. For your convenience, the app is accessible in whatever language your smart phone uses. For service requests, such as a container repair, obtaining a new container or notifying the City about a missed pickup, please use the [Sac311](#) app or go to [www.sac311.org](http://www.sac311.org).



@sacrecycle

## WE WANT YOU TO STAY CONNECTED

Check out our social media channels. Get current news, information, pictures, and upcoming event dates on our Facebook, Twitter and Instagram pages.

## GET SERVICE ALERTS ABOUT YOUR COLLECTION

Be the first to know if there will be a change to your collection day. Download the [SacRecycle](#) app or visit [sacrecycle.org](http://sacrecycle.org) and click on “Collection Calendar” to sign up for service reminders and alerts.

- Get weekly reminders for your collection day via the [SacRecycle](#) app or by text or email.
- Get service alerts if there will be collection changes or delays due to road closures, weather impacts or other issues.
- Customize the day and time you want to receive your reminders.
- Download your schedule to a calendar app or print it for easy reference. Calendars do change; you should download a new calendar every few weeks.
- Calendars are specific for each customer’s address.



# RECYCLE COLLECTION CALENDAR

## 2023-B

Recycle collection is every other week on your garbage pick-up day.

June						
S	M	T	W	T	F	S
				1	2	3
4	5	6	7	8	9	10
11	12	13	14	15	16	17
18	19	20	21	22	23	24
25	26	27	28	29	30	

July						
S	M	T	W	T	F	S
						1
2	3	4	5	6	7	8
9	10	11	12	13	14	15
16	17	18	19	20	21	22
23	24	25	26	27	28	29
30	31					

August						
S	M	T	W	T	F	S
			1	2	3	4
5	6	7	8	9	10	11
12	13	14	15	16	17	18
19	20	21	22	23	24	25
26	27	28	29	30	31	

September						
S	M	T	W	T	F	S
					1	2
3	4	5	6	7	8	9
10	11	12	13	14	15	16
17	18	19	20	21	22	23
24	25	26	27	28	29	30

October						
S	M	T	W	T	F	S
1	2	3	4	5	6	7
8	9	10	11	12	13	14
15	16	17	18	19	20	21
22	23	24	25	26	27	28
29	30	31				

November						
S	M	T	W	T	F	S
			1	2	3	4
5	6	7	8	9	10	11
12	13	14	15	16	17	18
19	20	21	22	23	24	25
26	27	28	29	30		

 = Leaf Collection Season

## 2024-B

December						
S	M	T	W	T	F	S
					1	2
3	4	5	6	7	8	9
10	11	12	13	14	15	16
17	18	19	20	21	22	23
24	25	26	27	28	29	30
31						

January						
S	M	T	W	T	F	S
						1
2	3	4	5	6		
7	8	9	10	11	12	13
14	15	16	17	18	19	20
21	22	23	24	25	26	27
28	29	30	31			

February						
S	M	T	W	T	F	S
						1
2	3					
4	5	6	7	8	9	10
11	12	13	14	15	16	17
18	19	20	21	22	23	24
25	26	27	28	29		

March						
S	M	T	W	T	F	S
					1	2
3	4	5	6	7	8	9
10	11	12	13	14	15	16
17	18	19	20	21	22	23
24	25	26	27	28	29	30
31						

April						
S	M	T	W	T	F	S
						1
2	3	4	5	6		
7	8	9	10	11	12	13
14	15	16	17	18	19	20
21	22	23	24	25	26	27
28	29	30				

May						
S	M	T	W	T	F	S
						1
2	3					
4	5	6	7	8	9	10
11	12	13	14	15	16	17
18	19	20	21	22	23	24
25	26	27	28	29	30	31

June						
S	M	T	W	T	F	S
						1
2	3	4	5	6	7	8
9	10	11	12	13	14	15
16	17	18	19	20	21	22
23	24	25	26	27	28	29
30						

July						
S	M	T	W	T	F	S
						1
2	3	4	5	6		
7	8	9	10	11	12	13
14	15	16	17	18	19	20
21	22	23	24	25	26	27
28	29	30	31			

August						
S	M	T	W	T	F	S
						1
2	3					
4	5	6	7	8	9	10
11	12	13	14	15	16	17
18	19	20	21	22	23	24
25	26	27	28	29	30	31





Call 311 for a service guide in your preferred language

[sacrecycle.org](https://sacrecycle.org)

