

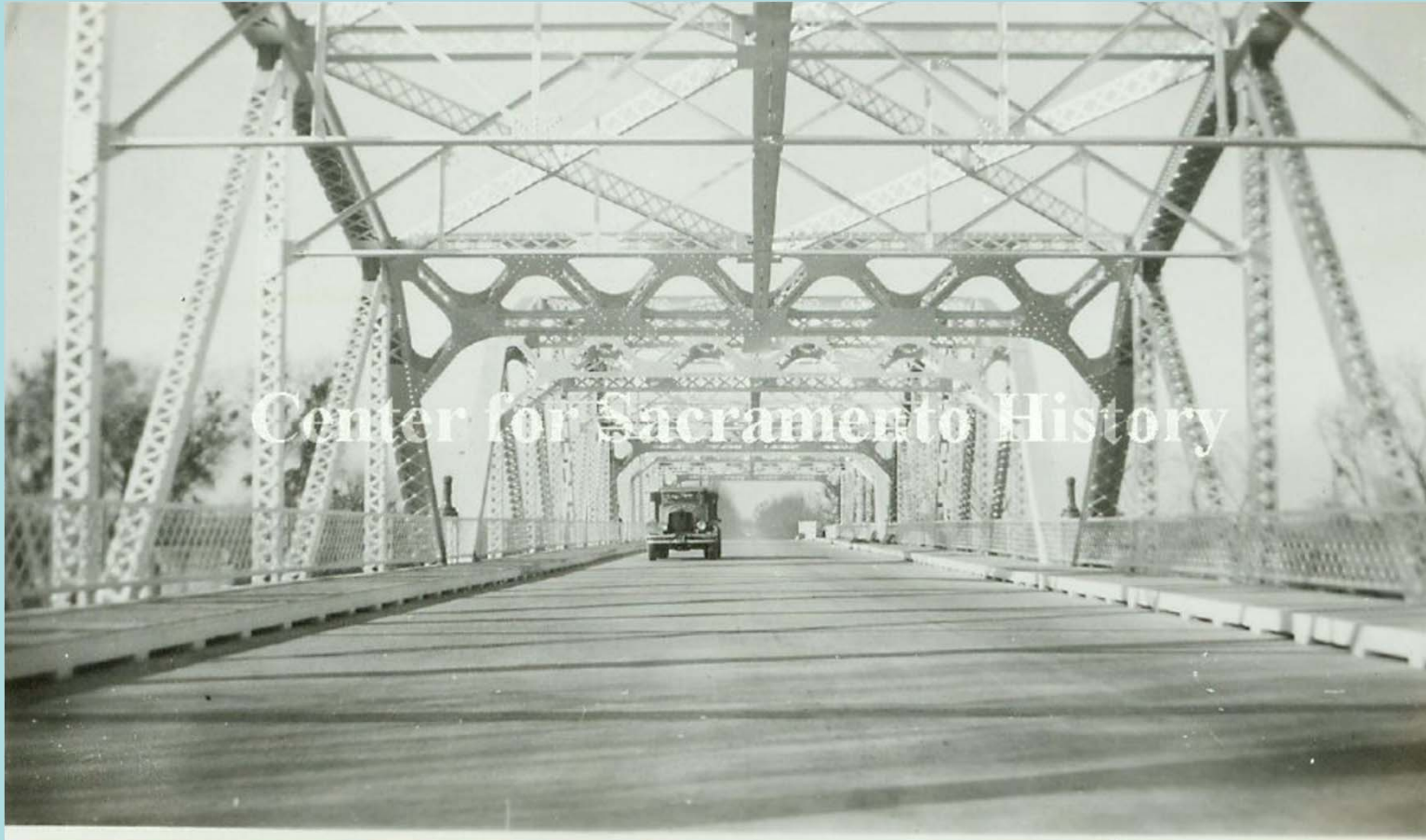
City of
SACRAMENTO

**TWO RIVERS TRAIL
PHASE II**

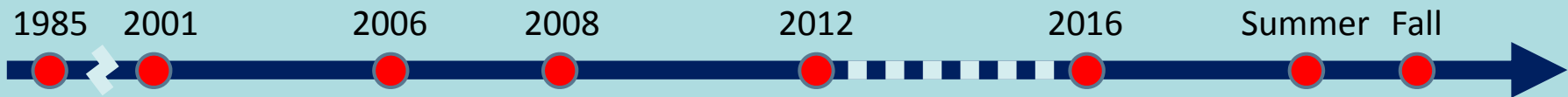
Adam Randolph, PE
Jennifer Donlon Wyant

City of Sacramento

HISTORY



HISTORY AND PROJECT TIMELINE

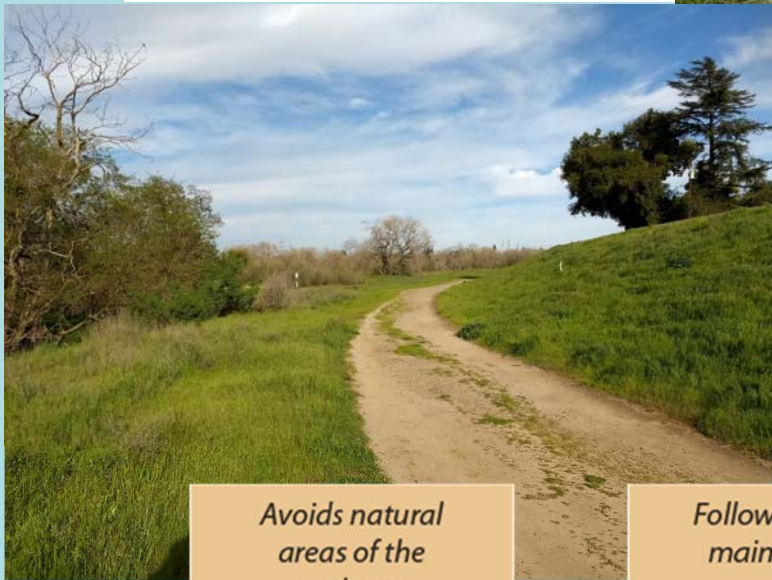


December 1985	American River Parkway Plan
October 2001	Two Rivers Trail Concept Plan
August 2006	Two Rivers Trail Phase I constructed
November 2008	American River Parkway Plan Update
May 2012	Two Rivers Trail included in CIP
May 2016	Community surveys
July/August 2018	CEQA public review
November 2018	Public hearings on project

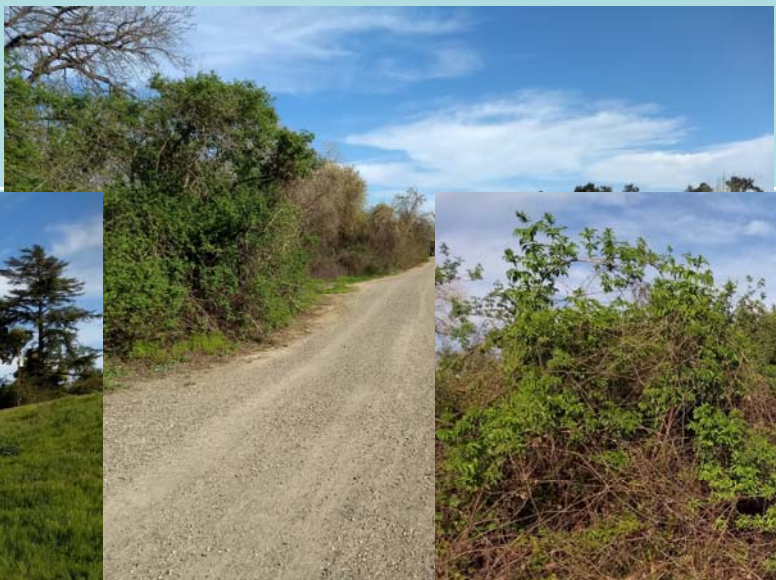
TRAIL NETWORK



TRAIL DESIGN



Avoids natural areas of the parkway

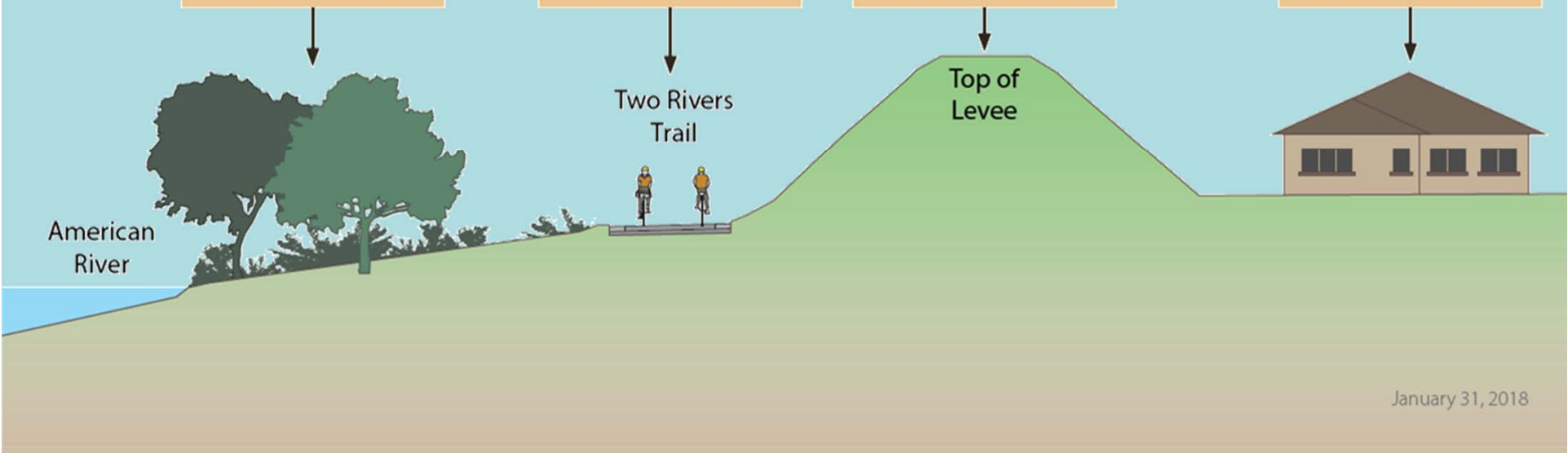


Follows existing maintenance road

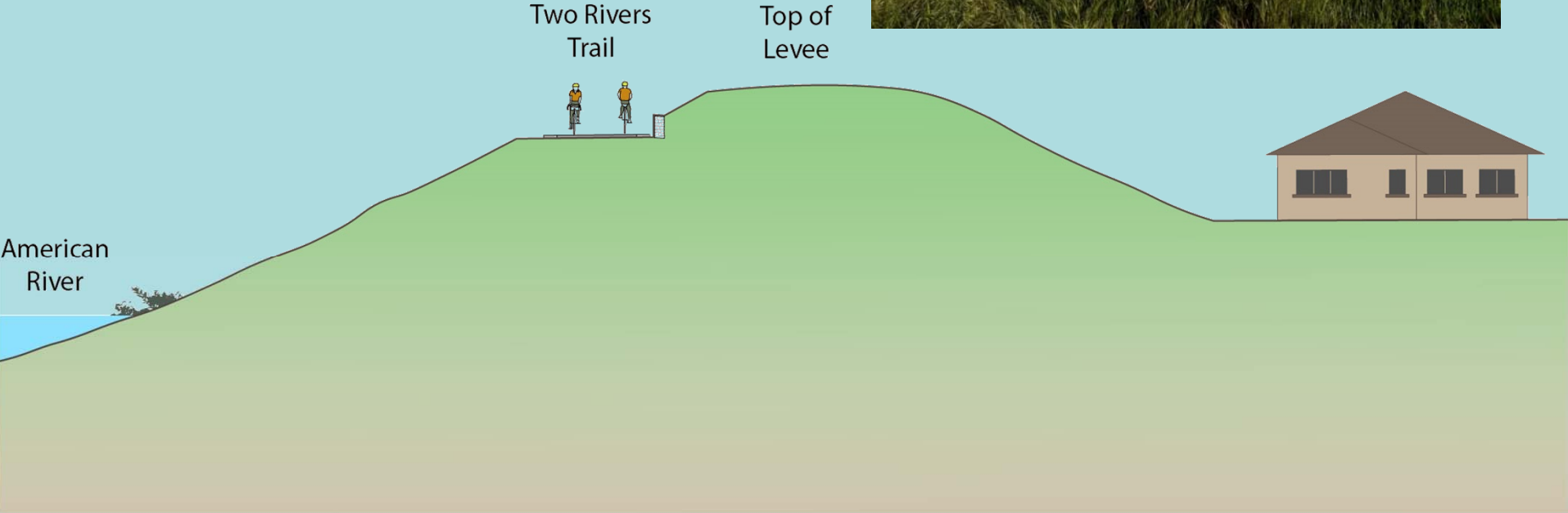


Avoids recreation conflicts with levee maintenance

Maintains privacy for residents along the levee

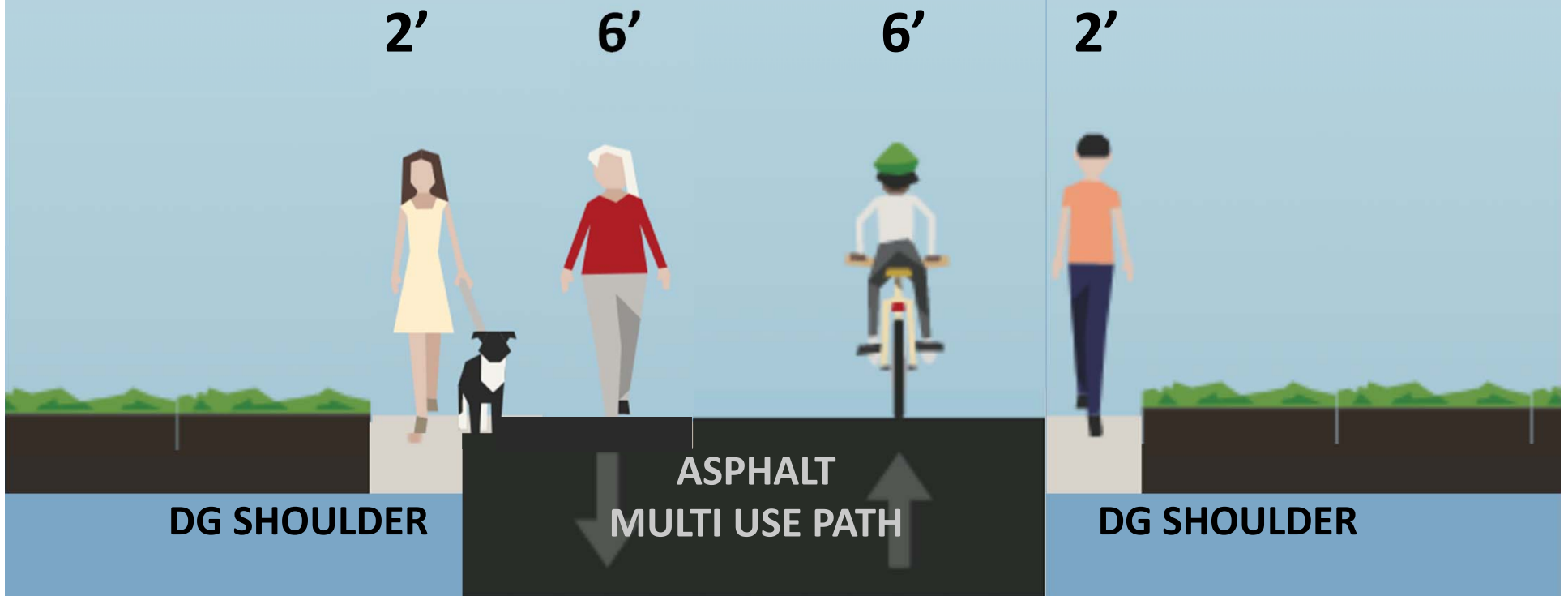


TRAIL DESIGN



TRAIL DESIGN

STANDARD TRAIL CROSS SECTION



TRAIL DESIGN

AMENDED TRAIL CROSS SECTION

4' to 6'

4'

4'

2'



DG SHOULDER

ASPHALT
MULTI USE
PATH

DG SHOULDER

NATURAL RESOURCES

Elderberry shrub and Valley Elderberry Longhorn Beetle

Photo Credit: Sarah Swenty/USFWS



Photo Credit: USFWS

Swainson's Hawk

Photo Credit: Jon King



Photo Credit: Ray Weiss, GEI

Trail Benefits

Comprehensive trail systems give incentive to walk or bike, **improving overall health.**

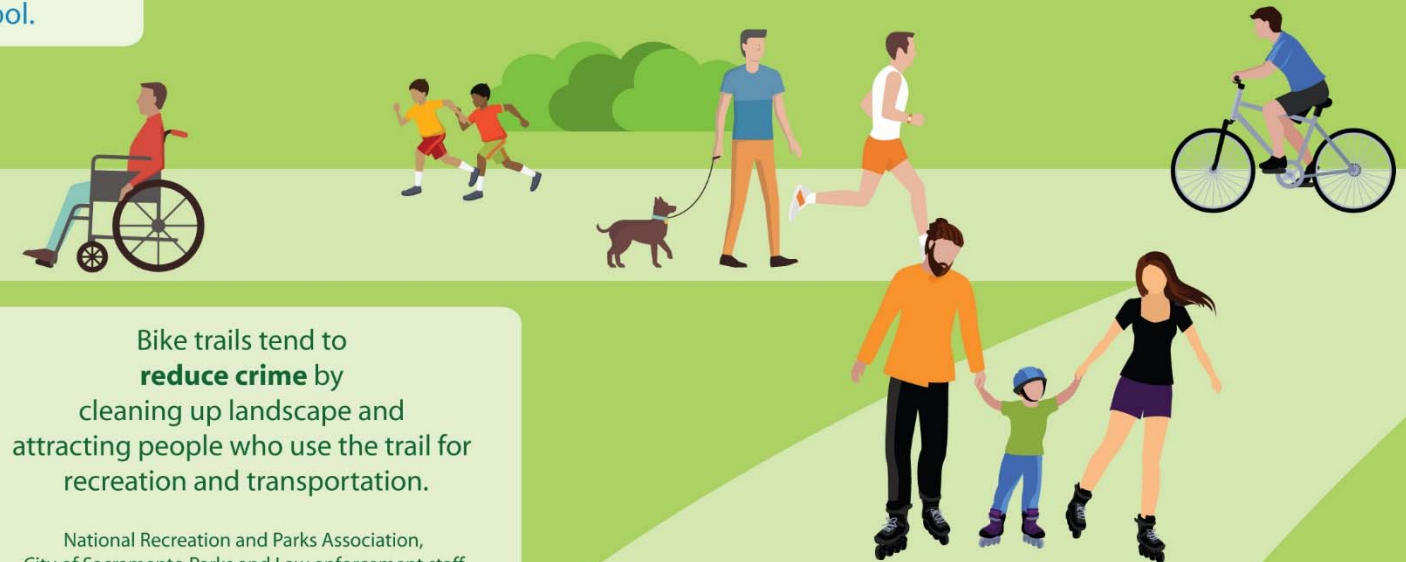
Homes near trails often **have higher property values**, ranging from 5-10% in most studies.

~Headwaters Economics, 2016

Trails are important for home buyers coming in second only to highway access.

~National Association of Home Builders & National Association of Realtors Survey,

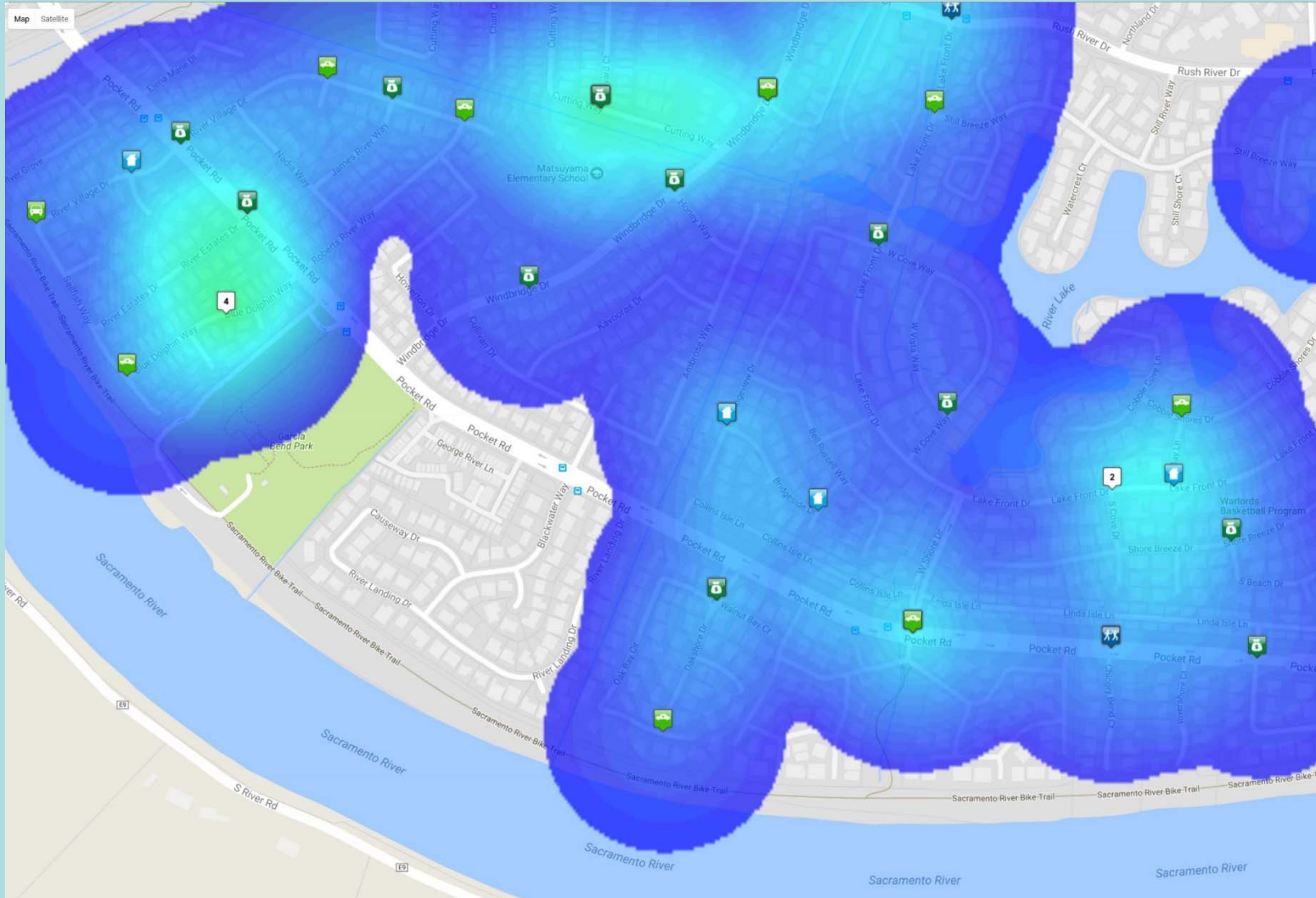
Surveys of City residents has shown a majority of respondents will **increase their activity**, and a significant number of respondents are more likely to use the trail to commute or school.



Bike trails tend to **reduce crime** by cleaning up landscape and attracting people who use the trail for recreation and transportation.

National Recreation and Parks Association,
City of Sacramento Parks and Law enforcement staff,

SAFETY



SAFETY

SPD Homeless Response Metrics February 2018

3,773 calls for service
involving Homelessness

Patrol responded to
3,729 of those calls



146 referrals
from 311



27 of those calls
resulted in Illegal
Camping Enforcement



Our Impact Team
responded to 506
of those calls



Officers created 482
service referral
connections



480 yards of trash
removed from
homeless camps



2 CPTED assessments
0 CPTED completed

Crime
Prevention
Through
Environmental
Design

Service referrals were
declined 572 times
when offering services

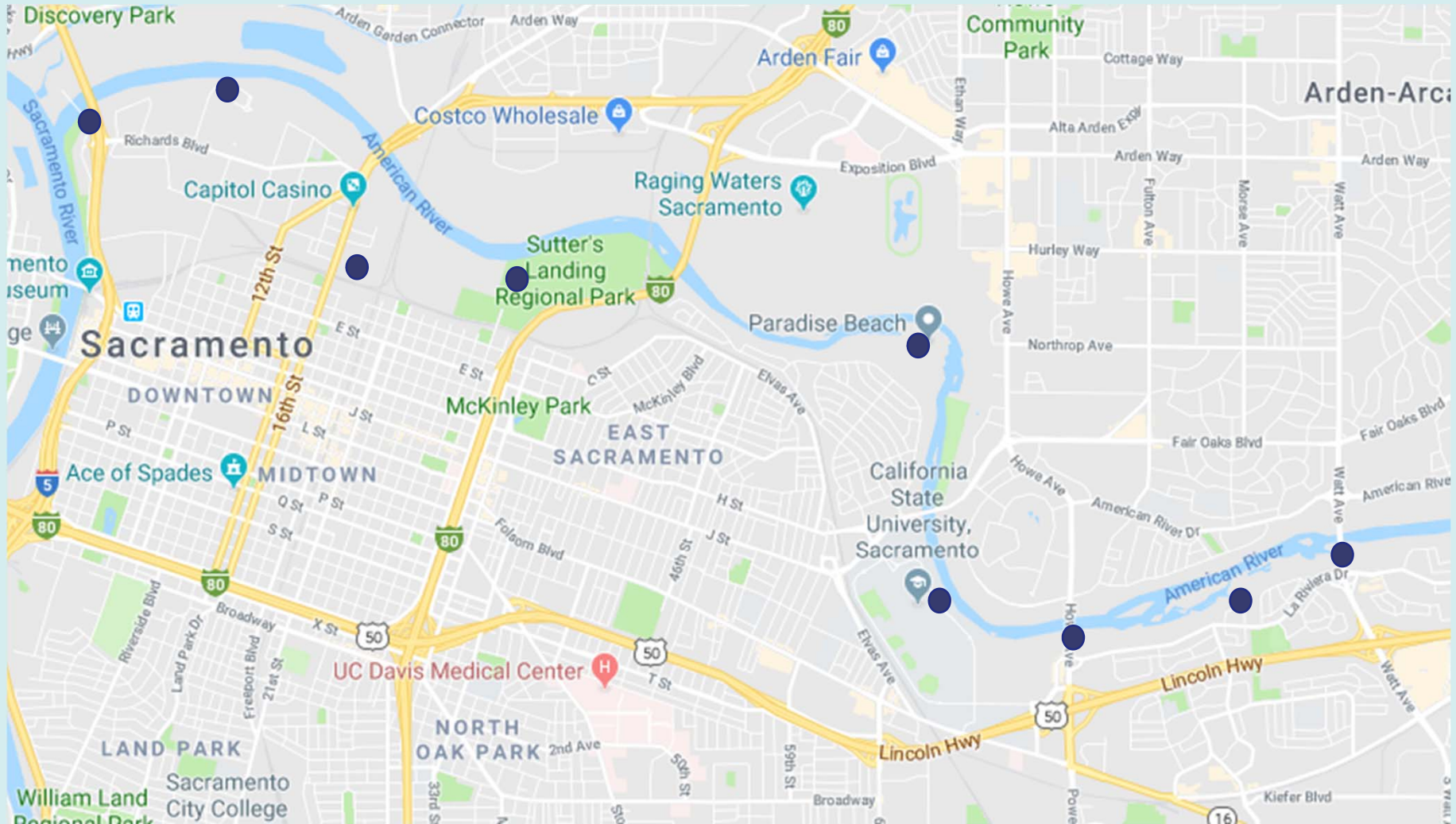


SPEAKERS

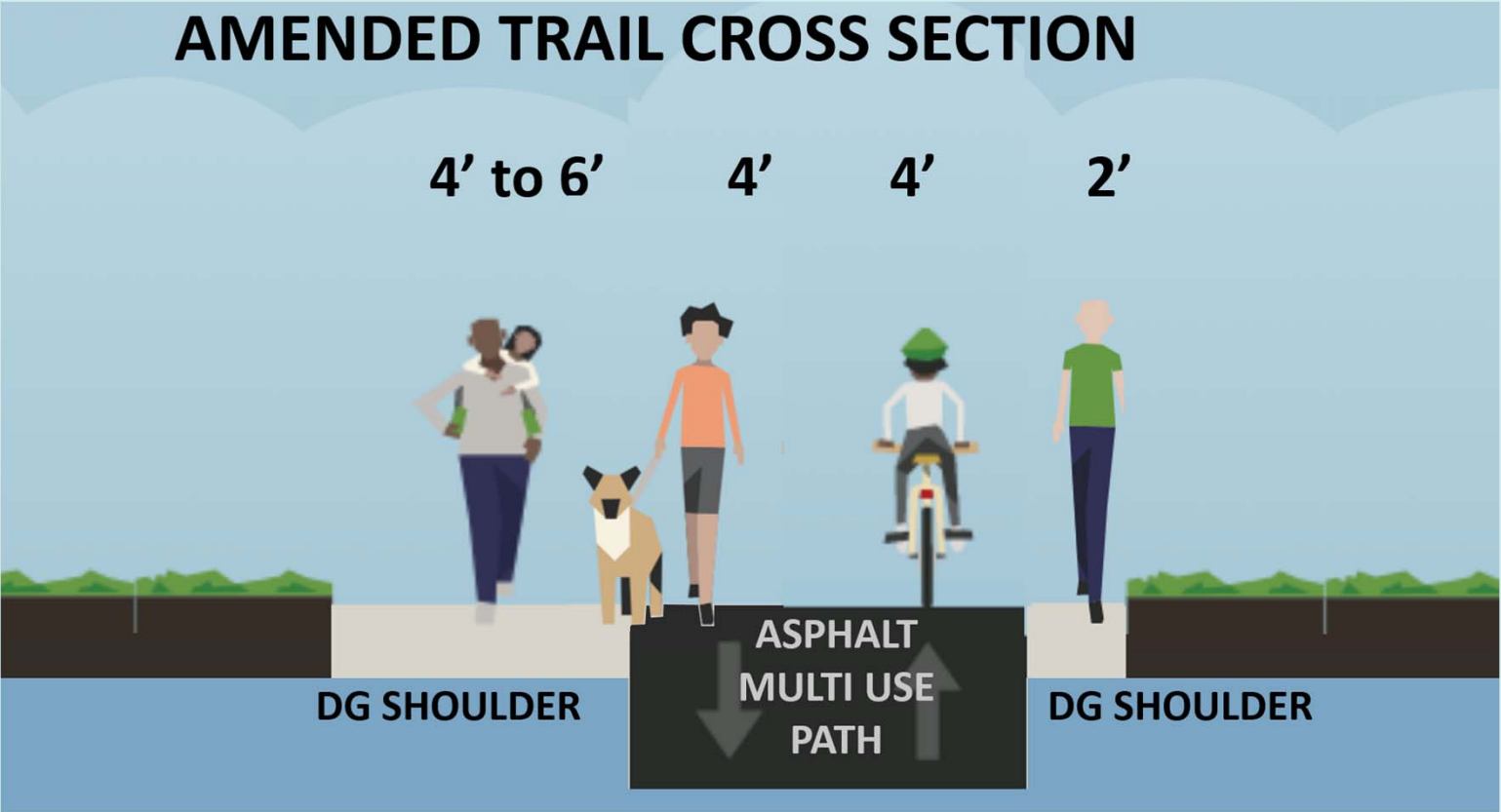
- Council Member Jeff Harris
- Adam Randolph *Senior Engineer- Public Works*
- Jennifer Donlon-Wyant *Active Transportation Specialist- Public Works*
- Greg Galliano *Police Sergeant- Impact Team*
- Paul Cummings *City Park Rangers*
- Andrea Shephard *Environmental Project Manager- GEI Inc*

TRAIL NETWORK

● Trail Access Point



DESIGN INPUT



DESIGN INPUT



COSTS

