

RECORD OF SURVEY GPS STATIC SURVEY

In the City of Sacramento, County of Sacramento, State of California
Date of Survey: January 2001 - April 2002 Roy Heavenston PLS 7356
1997.30 EPOCH COSS GPS CONTROL NETWORK

STATEMENT OF PURPOSE:

THE PURPOSE OF THIS SURVEY IS TO ESTABLISH A PRIMARY HORIZONTAL CONTROL NETWORK FOR THE CITY OF SACRAMENTO THAT IS CONSTRAINED TO THE FIRST ORDER CALIFORNIA HIGH PRECISION GEODETIC NETWORK (CA HPGN-D) BASED ON THE 1983 NORTH AMERICAN DATUM. THIS SURVEY ESTABLISHES THE 1997.30 EPOCH CITY OF SACRAMENTO SURVEYOR GLOBAL POSITIONING SYSTEM (COSS GPS) GEODETIC CONTROL NETWORK.

BASIS OF BEARING:

THIS SURVEY ESTABLISHES THE BASIS OF BEARINGS FOR THE 1997.30 EPOCH COSS GPS GEODETIC CONTROL NETWORK FOR THE CITY OF SACRAMENTO ON THE CALIFORNIA STATE PLANE COORDINATE SYSTEM, ZONE II AS DEFINED BY THE NATIONAL GEODETIC SURVEY'S 1983 NORTH AMERICAN DATUM, AND ADJUSTED TO THE CA HPGN-D 1997.30 ADJUSTMENT HOLDING THE LISTED CA HPGN-D STATIONS FIXED.

NOTES:

THE COSS GEODETIC CONTROL NETWORK WAS ADJUSTED BY THE CITY OF SACRAMENTO GPS SURVEY COORDINATOR IN THE CITY OF SACRAMENTO, CALIFORNIA. THE GPS DATA WAS PROCESSED AND ADJUSTED USING TRIMBLE GEOMATICS OFFICE Version 1.50 ADJUSTMENT SOFTWARE. THE COSS REPORT IS AVAILABLE IN THE SURVEY OFFICE OF THE DEPARTMENT OF PUBLIC WORKS, CITY OF SACRAMENTO.

SEE SHEET 2 FOR BEARINGS AND DISTANCES.

SEE SHEET 3 FOR LINE LEGEND.

SEE SHEETS 4 THROUGH 7 FOR MONUMENT LOCATIONS.

SEE SHEET 8 FOR MONUMENT DESCRIPTIONS AND ABBREVIATIONS.

BACKGROUND MAP TAKEN FROM CITY OF SACRAMENTO GIS NAD 1983 BASE MAP.

ADDITIONAL INFORMATION CAN BE OBTAINED FROM THE COSS GPS DATABASE.

SURVEYOR'S STATEMENT:

THIS MAP CORRECTLY REPRESENTS A SURVEY MADE BY ME OR UNDER MY DIRECTION IN CONFORMANCE WITH THE REQUIREMENTS OF THE LAND SURVEYOR'S ACT AT THE REQUEST OF THE CITY OF SACRAMENTO SUPERVISING SURVEYOR IN JANUARY 2001.

Roy J. Heavenston
ROY J. HEAVENSTON P.L.S. 7356
LICENSE EXPIRATION DATE: 12/31/05



COUNTY SURVEYOR'S STATEMENT:

THIS MAP HAS BEEN EXAMINED IN ACCORDANCE WITH SECTION 8766 OF THE LAND SURVEYOR'S ACT THIS 19th DAY OF December 2002

RCG 25724
COUNTY SURVEYOR: RCG 25724
L.S. OR R.C.E. NO. 12.31.05
LICENSE EXPIRATION DATE:



COUNTY RECORDER'S STATEMENT:

FILED THIS 19th DAY OF December 2002 AT 10:51 AM IN BOOK 03 OF Survey Maps AT PAGE 29, AT THE REQUEST OF CITY OF SACRAMENTO.

Mark Norris
MARK NORRIS
SACRAMENTO COUNTY RECORDER
STATE OF CALIFORNIA

BY: *Stevens*
DEPUTY
BOOK 20021219
Page 0906

MONUMENT LEGEND:

- CALIFORNIA STATE HIGH PRECISION GEODETIC NETWORK (CA HPGN-D) FIXED STATIONS, AS COMPILED AND PUBLISHED BY CALTRANS IN AUGUST 2002.
- ▲ CITY OF SACRAMENTO SURVEYOR GPS (COSS GPS) GEODETIC CONTROL STATIONS.
- SACRAMENTO CITY LIMITS DATABASE.

CA HPGN-D FIXED STATIONS

STATION NAME	NORTHING	EASTING	LATITUDE	LONGITUDE	E. H.	C. F.	EPOCH DATE
AP STA A2	1946130.55	6704644.92	38° 30' 18.05429"	121° 30' 01.31150"	-85.20	0.99996550	1997.30
G 1414	1927408.05	6738941.88	38° 27' 10.89503"	121° 22' 51.46681"	-62.34	0.99997501	1997.30
GAFFNEY	1910366.34	6681373.49	38° 24' 25.68282"	121° 34' 56.13321"	-99.61	0.99998408	1997.30
HPGN D CA 03 BG	1946210.14	6681291.78	38° 30' 20.00661"	121° 34' 55.08842"	-69.49	0.99996541	1997.30
HPGN D CA 03 CH	1970975.49	6681965.74	38° 34' 24.78434"	121° 34' 45.16737"	-75.20	0.99995420	1997.30
HPGN D CA CSUS	1964117.27	6726597.14	38° 33' 14.56895"	121° 25' 23.72001"	-57.25	0.99995728	1997.30
J 1414	1943231.78	6734201.80	38° 29' 47.62756"	121° 23' 49.73318"	-62.14	0.99996699	1997.30
KELLER*	1911431.46	6728590.81	38° 24' 33.64285"	121° 25' 02.87422"	-69.23	0.99998363	1997.30
CONTROL MON. LR 208	2001003.31	6736639.57	38° 39' 18.53792"	121° 23' 14.17065"	-23.16	0.99994260	1991.35**
F9 01*	1983334.97	6687442.68	38° 36' 26.70273"	121° 33' 35.44789"	-59.38	0.99994915	1991.35**
HPGN D CA 03 AA	1985970.15	6700397.36	38° 36' 52.09946"	121° 30' 52.06770"	-80.71	0.99994813	1991.35**
HPGN D CA 03 DH	2005408.24	6692537.37	38° 40' 04.64987"	121° 32' 29.86243"	-72.34	0.99994096	1991.35**
RIEGO RM 4	2035897.10	6708553.37	38° 45' 05.18525"	121° 29' 05.74326"	-52.62	0.99993149	1991.35**
SMF AP STA A*	2011072.42	6675251.28	38° 41' 01.44579"	121° 36' 07.50553"	-80.97	0.99993901	1998.50
RIVER*	1997860.54	6683833.03	38° 38' 50.45977"	121° 34' 20.06090"	-61.35	0.99994362	1999.51

*STATIONS OBSERVED BUT NOT USED IN COSS FINAL ADJUSTMENT.
**STATIONS GEODETIC COORDINATES UPDATED TO EPOCH DATE 1997.30 USING HTDP Version 2.6.

ESTABLISHED STATION COORDINATE LISTING

LAMBERT ZONE II
1983 NORTH AMERICAN DATUM
1997.30 HPGN-D ADJUSTED STATIONS
U. S. SURVEY FEET

GAFFNEY

KELLER



SCALE:
1" = 6000'

63-29-1

RECORD OF SURVEY GPS STATIC SURVEY

In the City of Sacramento, County of Sacramento, State of California
Date of Survey: January 2001 - April 2002 Roy Heavenston PLS 7356
1997.30 EPOCH COSS GPS CONTROL NETWORK
UNITS BASED ON U.S. SURVEY FOOT

NOTES:

ALL DISTANCES SHOWN HEREON ARE GRID.
TO OBTAIN GROUND DISTANCE DIVIDE BY MEAN
OF COMBINATION FACTORS (C.F.).

SURVEY PROCEDURES MEET CALIFORNIA
GEODETIC CONTROL COMMITTEE SPECIFICATIONS
FOR GEODETIC CONTROL NETWORKS
USING HIGH PRODUCTION GPS SURVEYING
TECHNIQUES, Version 2.0, JULY 1996.

BEARINGS AND DISTANCES
SHOWN ARE MEASURED BASELINES.

SEE SHEET 1 FOR ADDITIONAL NOTES,
MONUMENT LEGEND AND BASIS OF
BEARINGS.

SEE SHEET 3 FOR LINE LEGEND.

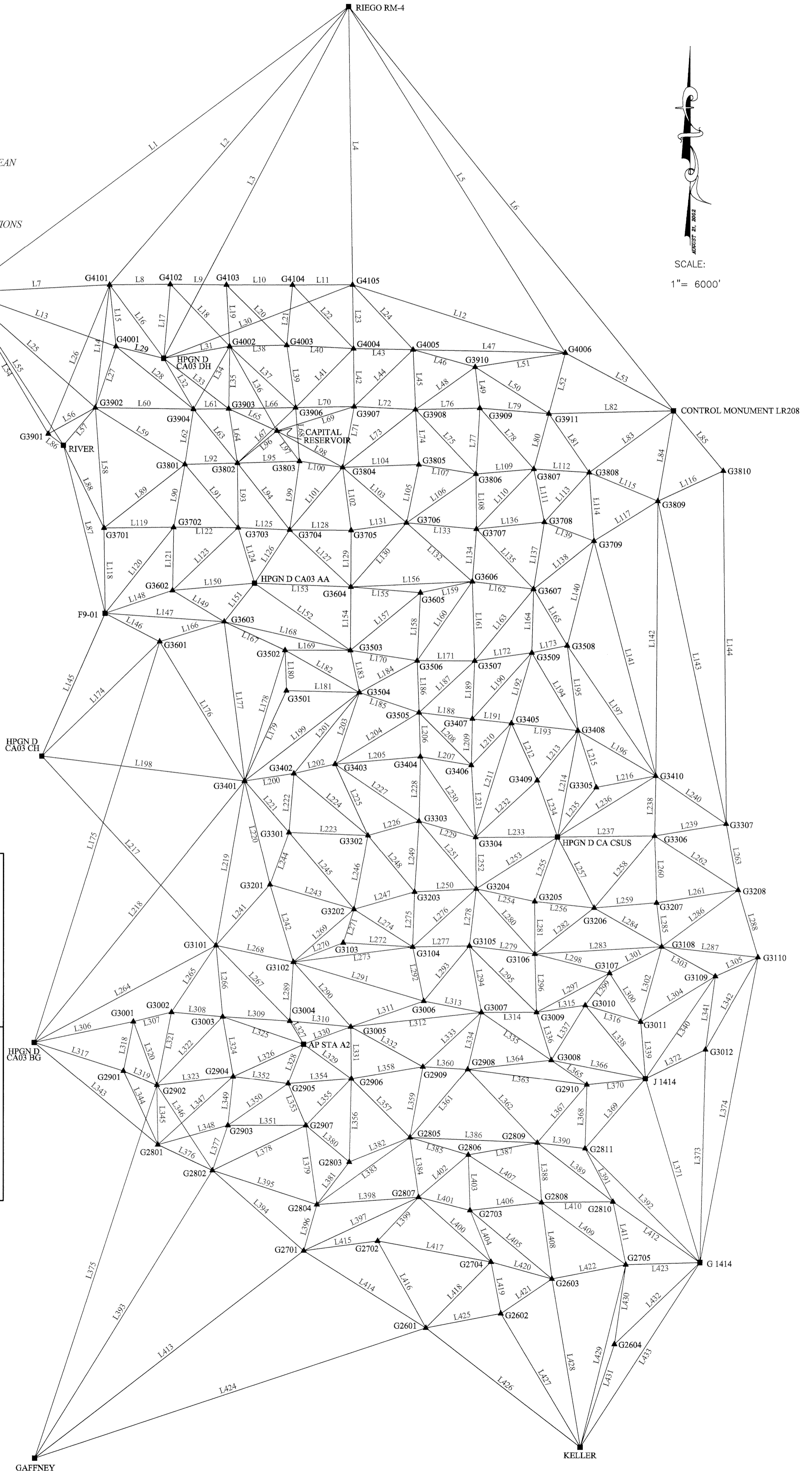
SEE SHEETS 4 THROUGH 7
FOR MONUMENT LOCATIONS.

SEE SHEET 8 FOR MONUMENT
DESCRIPTIONS.

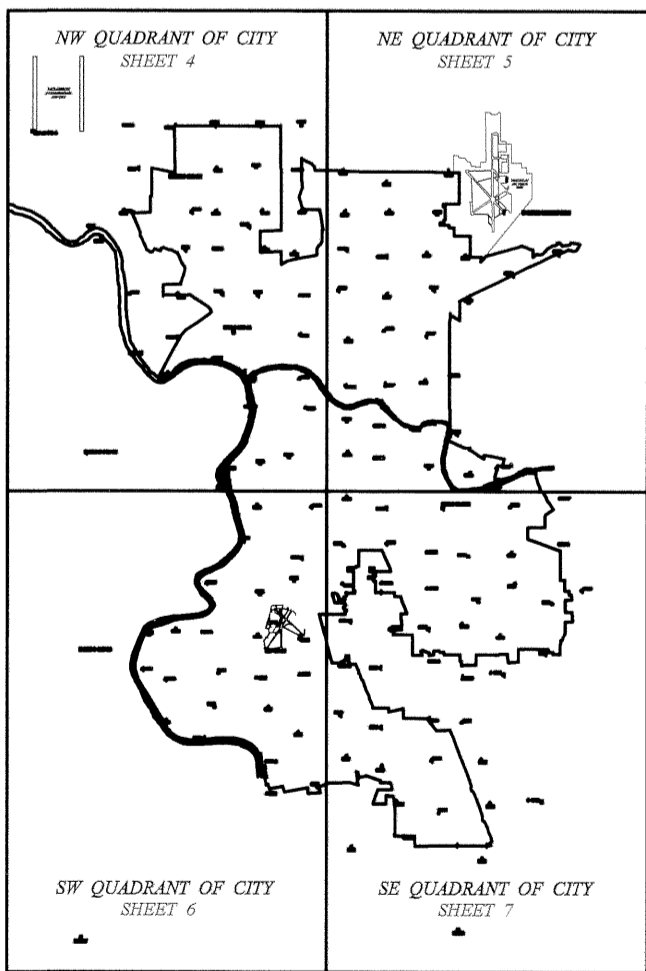
3.2808333 U. S. SURVEY FEET
(39.37 INCHES) = 1 METER.



SCALE:
1" = 6000'



INDEX MAP



63-29-2

RECORD OF SURVEY

GPS STATIC SURVEY

In the City of Sacramento, County of Sacramento, State of California
 Date of Survey: January 2001 - April 2002 Roy Heavenston PLS 7356
 1997.30 EPOCH COSS GPS CONTROL NETWORK

LINE TABLE		
LINE	LENGTH	BEARING
L1	41536.58	N53°17'49"E
L2	31803.97	N40°37'20"E
L3	34439.57	S27°42'48"W
L4	24083.98	N00°46'53"W
L5	35295.34	S32°03'43"E
L6	44792.99	N38°49'51"W
L7	12613.84	S86°53'10"W
L8	5269.77	S89°20'20"W
L9	4873.34	S89°32'25"E
L10	5708.27	N89°48'29"E
L11	5184.16	N89°48'31"E
L12	19308.85	N72°25'33"W
L13	13941.61	N70°28'58"W
L14	10710.23	S06°41'33"W
L15	5370.66	S05°49'40"E
L16	7893.73	N36°27'22"W
L17	6435.90	S05°09'38"W
L18	7425.72	S43°49'44"E
L19	5324.70	N02°53'52"W
L20	7367.79	S45°00'40"E
L21	5251.52	N05°26'06"E
L22	7620.67	S43°45'08"E
L23	5522.66	N00°53'28"W
L24	7656.85	N43°06'00"W
L25	15093.03	S48°44'50"E
L26	13966.04	N22°24'06"E
L27	5589.87	S18°42'51"W
L28	8627.60	N51°17'16"W
L29	4265.54	N76°21'25"W
L30	17555.40	S68°35'40"W
L31	5817.33	S79°34'23"W
L32	5095.21	S30°30'41"E
L33	7116.91	N52°20'25"W
L34	6280.53	N29°56'17"E
L35	5401.74	S00°55'27"W
L36	8370.17	N29°11'55"W
L37	7771.52	N47°06'54"W
L38	4942.83	S88°44'07"W
L39	5450.06	S07°56'19"E
L40	5774.06	N87°15'09"W
L41	7167.46	N44°23'56"E
L42	5018.49	S00°29'36"E
L43	5146.30	S89°14'04"W
L44	7108.78	S45°52'21"W
L45	5191.81	N02°17'18"W
L46	5588.86	S74°29'26"E
L47	13178.10	N88°57'33"W
L48	6360.20	S54°30'06"W
L49	3569.69	N06°25'12"W
L50	7530.20	N57°47'09"W
L51	7891.02	N80°50'54"E
L52	5457.15	S15°04'39"W
L53	10594.55	S61°57'02"E
L54	14226.45	S30°44'42"E
L55	15754.39	S33°00'21"E
L56	4666.30	S60°49'23"W
L57	4274.66	N40°18'28"E
L58	10422.88	S04°08'02"E
L59	9180.05	N57°55'11"W
L60	8526.18	N89°19'06"W
L61	3047.53	S89°13'14"W
L62	4832.26	N08°53'45"E
L63	6011.09	S39°13'36"E
L64	4758.09	S09°07'09"E
L65	4585.16	N65°26'36"W
L66	5782.58	N88°53'14"E
L67	6957.95	N46°15'52"E
L68	4638.34	S04°07'51"E
L69	6998.02	N72°21'37"E
L70	5058.96	S88°50'10"W
L71	5349.38	N10°42'27"E
L72	5315.26	S87°25'56"E
L73	8057.26	S51°28'43"W
L74	4773.30	S03°27'50"E
L75	7637.89	S43°18'52"E
L76	5579.10	N88°30'04"E
L77	5713.23	S03°23'14"W
L78	7037.70	N41°31'49"W
L79	5990.10	S85°31'45"E
L80	4975.93	S15°12'49"W
L81	6159.05	N34°19'47"W
L82	10773.51	N88°28'18"E
L83	9061.47	N53°37'45"E
L84	7945.49	S09°51'18"W
L85	6745.08	N39°40'56"W
L86	1638.14	S53°02'28"E
L87	14966.91	S13°57'15"E
L88	7955.43	S26°14'03"E
L89	8935.89	N51°50'52"E
L90	5539.55	S10°09'55"W
L91	7154.74	S40°07'35"E
L92	4550.13	S88°31'07"W
L93	5588.68	N00°38'25"W
L94	7317.33	S38°07'23"E
L95	5364.67	N88°02'06"E
L96	4412.34	S50°44'19"W
L97	3253.87	N36°42'47"W
L98	6483.74	N61°04'42"W
L99	6000.08	N08°05'15"E
L100	3766.98	S81°57'18"E
L101	7086.93	N40°11'50"E
L102	5488.60	S07°37'35"E
L103	7296.73	N49°05'21"W
L104	6597.07	N87°47'51"E
L105	5146.19	S12°05'23"W
L106	7370.31	S54°53'14"W
L107	5014.29	N80°54'13"W
L108	4764.53	S00°27'49"E
L109	5022.52	S85°02'02"W

LINE TABLE		
LINE	LENGTH	BEARING
L110	7189.13	S43°40'52"W
L111	4666.58	N11°06'01"W
L112	4787.67	S86°35'30"E
L113	5788.29	S42°06'07"W
L114	5928.38	N03°55'24"W
L115	6423.86	N67°32'05"W
L116	6250.45	N65°02'36"E
L117	6523.73	S57°58'18"W
L118	7389.81	S00°43'05"E
L119	6049.64	S89°21'36"W
L120	9543.90	N38°37'07"E
L121	5461.46	S01°04'31"W
L122	5588.76	N89°48'52"W
L123	7874.63	N46°16'49"E
L124	5006.07	S16°21'03"E
L125	4458.10	N87°50'20"W
L126	5546.50	N33°18'21"E
L127	7217.48	N47°02'19"W
L128	5302.52	S89°42'35"E
L129	4891.95	N00°14'29"E
L130	7344.65	S40°52'35"W
L131	4831.46	N82°07'48"E
L132	7633.63	S48°28'53"E
L133	6090.29	N85°03'15"W
L134	4548.62	N04°26'18"E
L135	7147.74	N43°38'35"W
L136	5896.23	N83°57'55"E
L137	5866.62	N09°07'33"E
L138	6680.22	S51°20'48"W
L139	4582.26	S69°17'53"E
L140	9340.73	N14°21'24"E
L141	20996.31	S14°45'02"E
L142	23764.84	N00°26'44"E
L143	28506.93	N11°58'05"W
L144	30525.52	S00°27'32"E
L145	13518.71	S23°53'55"W
L146	5328.69	N62°54'04"W
L147	10367.81	N86°11'47"W
L148	6185.19	N71°10'13"E
L149	5231.79	N59°08'02"W
L150	7129.20	N84°51'33"E
L151	4225.19	S38°08'43"W
L152	10098.58	N55°08'05"W
L153	8332.27	N88°03'06"W
L154	5489.73	S00°26'02"W
L155	6041.15	N85°25'49"W
L156	10533.75	N87°18'55"E
L157	7864.41	N50°26'40"E
L158	5900.90	S02°52'14"W
L159	4604.59	S77°46'44"W
L160	8376.86	N34°55'29"E
L161	6864.36	S01°40'44"E
L162	5323.41	N83°07'19"W
L163	8036.40	N39°14'37"E
L164	5513.23	S01°28'29"W
L165	5674.04	N30°44'45"W
L166	5865.18	N72°44'48"E
L167	5793.75	S64°55'28"E
L168	11167.64	N77°19'39"W
L169	5647.91	N89°56'39"E
L170	5835.55	N81°16'29"W
L171	4996.88	S89°55'19"W
L172	4993.18	S81°47'47"E
L173	3108.17	N78°12'49"E
L174	14251.57	S45°49'09"W
L175	36367.77	N17°25'52"E
L176	14095.01	S31°27'12"E
L177	13874.83	S07°15'38"E
L178	11835.63	S17°10'15"W
L179	8616.19	N24°49'00"E
L180	3489.72	S02°00'26"E
L181	6309.65	S88°39'57"E
L182	7386.25	N60°31'26"W
L183	3723.12	S12°07'44"W
L184	5696.18	S61°04'41"W
L185	5427.16	S71°33'58"E
L186	4473.86	S02°05'14"E
L187	6589.14	N47°11'27"E
L188	4657.98	N83°25'54"W
L189	5014.77	S02°21'37"W
L190	7698.11	S41°58'32"W
L191	3410.19	S83°37'28"E
L192	6350.30	N16°05'09"E
L193	5736.08	S83°51'23"E
L194	7799.80	N30°32'28"W
L195	7410.03	S07°08'20"E
L196	7789.37	S59°55'54"E
L197	13615.75	S34°14'42"E
L198	17699.25	N83°12'47"W
L199	12544.96	S52°17'18"W
L200	4307.37	N81°13'16"E
L201	9019.23	N38°55'47"E
L202	3658.25	S77°00'44"W
L203	6541.22	N18°45'04"E
L204	8522.60	S58°18'14"W
L205	7400.14	N84°50'30"E
L206	3814.40	N01°47'02"W
L207	4478.49	N80°43'04"W
L208	6415.95	S45°01'23"E
L209	4003.10	N01°16'16"E
L210	5022.47	S43°49'34"W
L211	10338.91	N17°27'43"E
L212	5407.63	S24°14'43"E
L213	5557.25	N39°04'05"E
L214	9362.73	S10°48'43"W
L215	5142.79	S18°01'34"E
L216	5243.57	S79°08'36"W
L217	22223.15	N42°46'26"W

LINE TABLE		
LINE	LENGTH	BEARING
L218	29105.47	S38°49'45"W
L219	14436.23	N09°54'20"W
L220	9206.66	N13°42'11"W
L221	5872.31	S40°43'50"E
L222	5125.04	N04°45'33"E
L223	6838.96	S87°57'26"E
L224	8349.56	S50°08'30"E
L225	6797.24	S24°44'26"E
L226	4582.81	S74°02'11"W
L227	8758.49	N55°52'46"W
L228	5579.57	S01°13'33"W
L229	5105.62	N74°16'57"W
L230	8453.18	S34°33'40"E
L231	6250.31	N03°26'39"W
L232	7256.52	S47°11'05"W
L233	7069.28	S89°35'44"W
L234	5184.74	N19°40'50"W
L235	5454.40	S37°51'46"W
L236	10011.57	N58°04'40"E
L237	8402.69	S89°12'08"W
L238	5177.70	S01°03'29"W
L239	6280.78	N80°20'33"E
L240	7359.60	N55°55'38"W
L241	7042.47	S41°28'35"W
L242	6995.38	N16°50'29"W
L243	7567.11	N73°45'28"W
L244	4788.19	S20°10'00"W
L245	8673.43	S40°20'19"E
L246	6483.25	S10°50'56"W
L247	5455.88	N73°50'38"E
L248	6298.95	N39°39'34"W
L249	6121.81	S03°36'52"W
L250	5349.89	N87°06'40"E
L251	7660.24	N40°19'32"W
L252	4457.13	S00°32'45"E
L253	8347.78	S57°19'27"W
L254	5166.06	S78°00'12"E
L255	5919.26	N19°28'28"E
L256	5154.01	N84°01'54"W
L257	6881.23	S27°16'05"E
L258	8149.29	N40°06'02"E
L259	5423.12	S85°10'09"W
L260	5778.88	S01°32'00"E
L261	7153.63	S80°58'32"W
L262	8590.15	N57°11'21"W
L263	5800.19	S10°12'29"E
L264	17888.77	S61°48'09"W
L265	6946.39	S33°38'36"W
L266	6187.98	N05°25'30"W
L267	9134.22	S44°24'33"E
L268	6839.83	N78°01'37"W
L269	6957.46	S48°50'36"W
L270	4618.42	N68°41'30"E
L271	3047.74	S17°52'44"W
L272	6021.35	S86°43'51"E
L273	10400.27	S82°37'32"W
L274	6023.93	N57°25'04"W
L275	4764.90	N01°58'44"E
L276	7460.00	S47°35'08"W
L277	4925.81	S88°48'31"W
L278	4963.59	N06°44'38"E
L279	5690.51	N83°06'16"W
L280	7561.00	N42°04'23"W
L281	4538.69	S00°10'01"E
L282	6493.32	N51°56'36"E
L283	10982.43	S86°35'35"W
L284	6741.49	S60°12'09"E
L285	3832.88	S06°41'13"E
L286	8252.38	S53°19'32"W
L287	8377.82	N84°00'00"W
L288	6052.15	S16°26'36"E
L289	5114.95	N03°21'09"E
L290	7484.25	N41°37'19"W
L291	11762.25	S73°29'32"E
L292	4775.25	S11°38'11"E
L293	6207.89	S39°39'15"W
L294	5830.38	N10°15'35"W
L295	8152.55	N45°20'29"W
L296	5049.29	S01°41'53"E
L297	7164.21	N61°35'28"E
L298	6655.93	N75°44'52"W
L299	3492.46	N36°58'24"E
L300	4993.82	N32°38'53"W
L301	5060.40	N63°04'39"E
L302	6745.63	S15°38'03"W
L303	5287.48	N61°26'06"W
L304	7582.74	N58°26'53"E
L305	4041.36	N65°51'51"E
L306	8801.90	N77°52'21"E

RECORD OF SURVEY GPS STATIC SURVEY

In the City of Sacramento, County of Sacramento, State of California
Date of Survey: January 2001 - April 2002 Roy Heavenston PLS 7356
1997.30 EPOCH COSS GPS CONTROL NETWORK

NW QUADRANT OF CITY



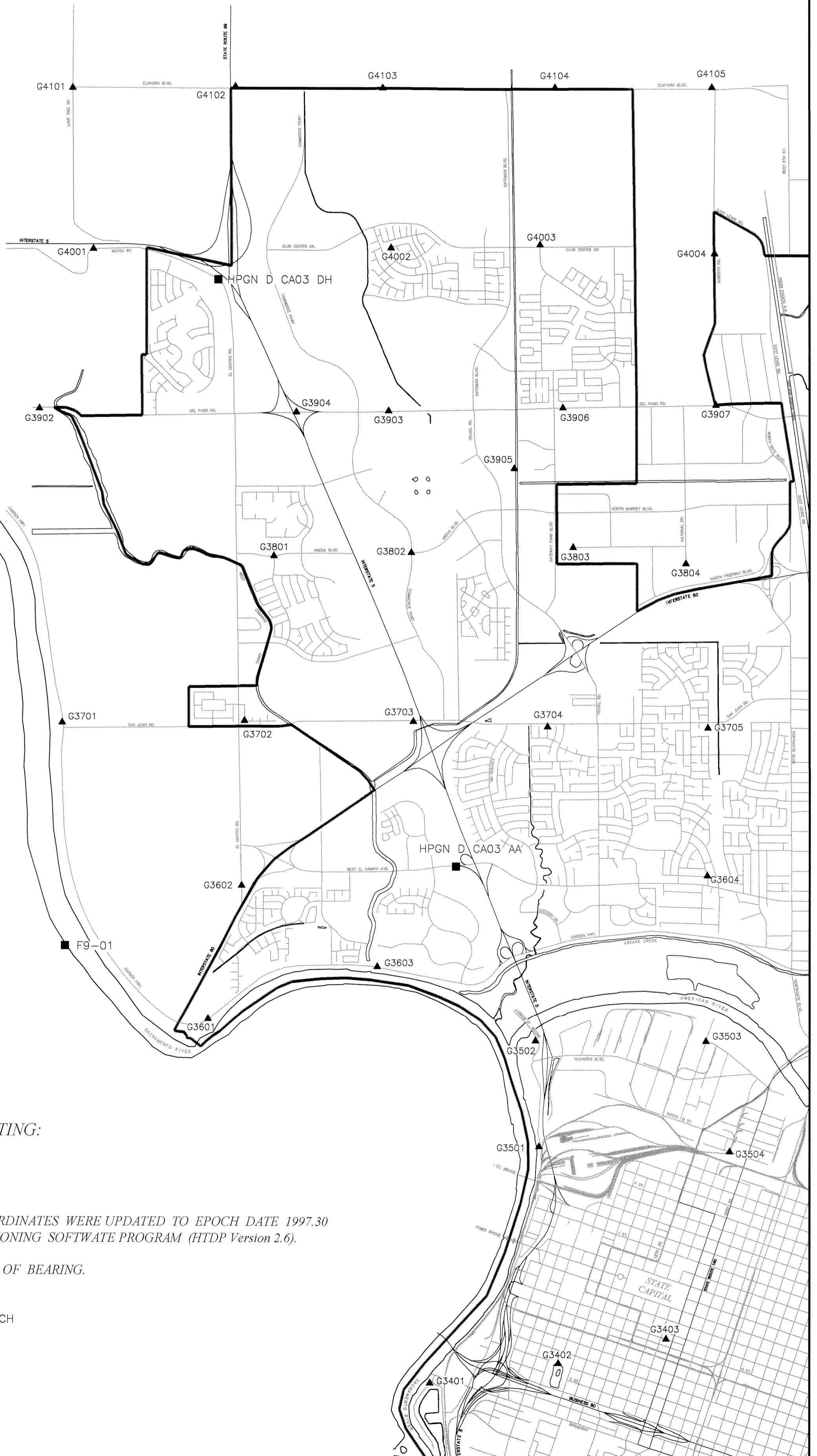
GPS NO.	NORTHING	EASTING	C.F.
G3401	1968883.819	6699540.961	0.99995832
G3402	1969541.222	6703797.866	0.99995913
G3403	1970363.394	6707362.530	0.99995841
G3501	1976704.343	6703157.323	0.99995485
G3502	1980191.921	6703035.098	0.99995322
G3503	1980197.435	6708683.004	0.99995403
G3504	1976557.425	6709465.266	0.99995554
G3601	1980907.793	6692186.150	0.99995300
G3602	1985331.474	6693296.606	0.99995226
G3603	1982647.389	6697787.413	0.99995228
G3604	1985687.010	6708724.589	0.99995219
G3701	1990724.390	6687349.833	0.99994918
G3702	1990791.977	6693399.098	0.99995050
G3703	1990773.880	6698987.824	0.99995047
G3704	1990605.769	6703442.756	0.99995061
G3705	1990578.916	6708745.204	0.99995049
G3801	1996244.571	6694376.765	0.99994815
G3802	1996362.209	6698925.373	0.99994790
G3803	1996546.168	6704286.892	0.99994838
G3804	1996018.968	6708016.800	0.99994855
G3901	1998845.295	6682524.227	0.99994617
G3902	2001120.152	6686598.456	0.99994651
G3903	2001060.166	6698171.276	0.99994604
G3904	2001018.707	6695124.030	0.99994508
G3905	1999154.600	6702341.705	0.99994724
G3906	2001172.455	6703952.763	0.99994647
G3907	2001275.213	6709010.684	0.99994621
G4001	2006414.495	6688391.952	0.99994470
G4002	2006461.199	6698258.410	0.99994440
G4003	2006570.287	6703200.040	0.99994460
G4004	2006293.515	6708967.466	0.99994439
G4101	2011757.400	6687846.623	0.99994269
G4102	2011818.193	6693116.038	0.99994124
G4103	2011779.086	6697989.217	0.99994231
G4104	2011798.199	6703697.454	0.99994268
G4105	2011815.508	6708881.582	0.99994176

ESTABLISHED STATION COORDINATE LISTING:

LAMBERT ZONE II
1983 NORTH AMERICAN DATUM
1997.30 HPGN-D ADJUSTED STATIONS
1991.35 HPGN-D ADJUSTED STATIONS GEODETIC COORDINATES WERE UPDATED TO EPOCH DATE 1997.30
USING AN NGS HORIZONTAL TIME-DEPENDENT POSITIONING SOFTWARE PROGRAM (HTDP Version 2.6).

SEE SHEET 1 AND 2 FOR NOTES, LEGEND AND BASIS OF BEARING.

■ HPGN D CA03 CH



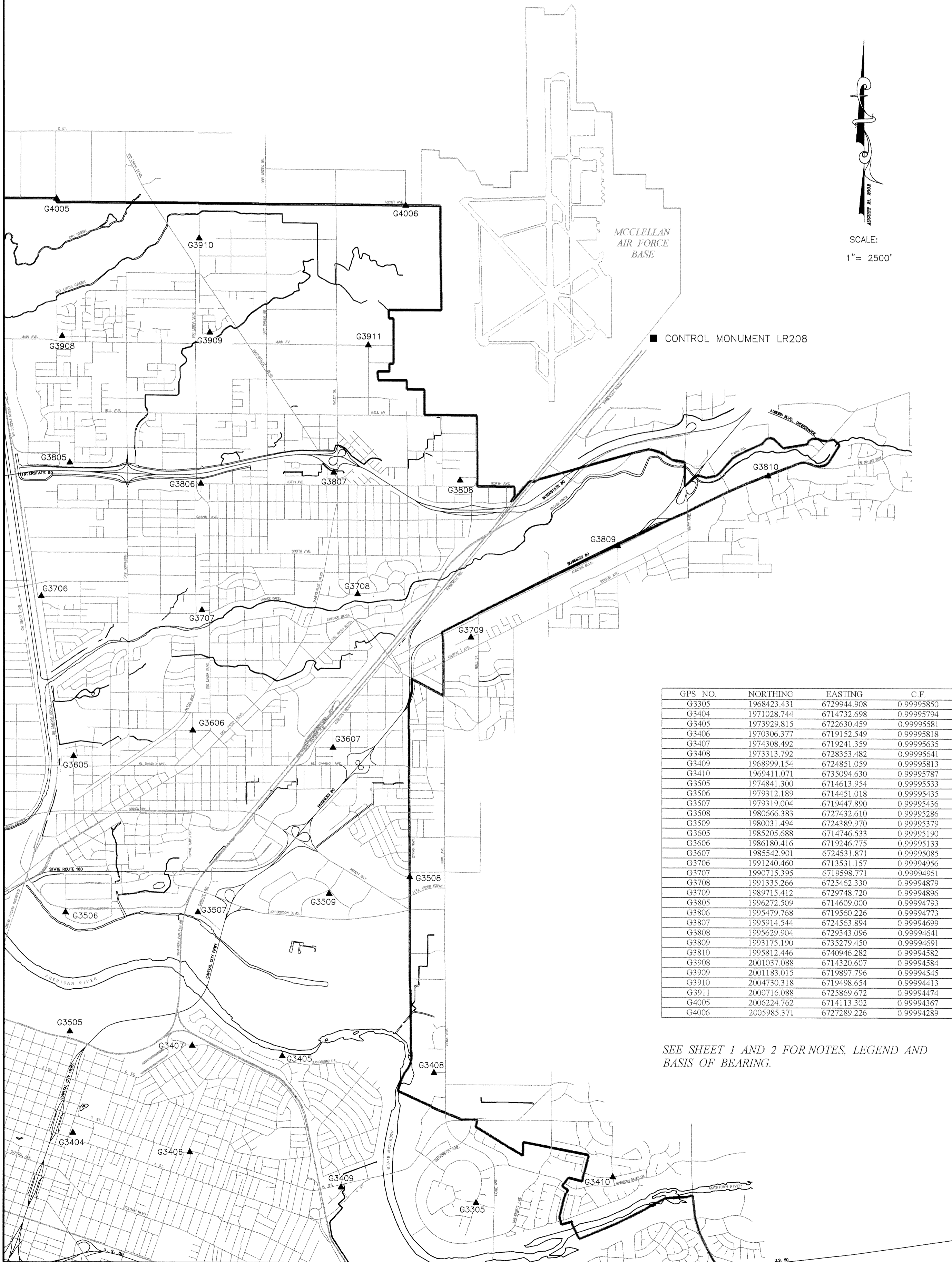
63-29-4

RECORD OF SURVEY

GPS STATIC SURVEY

In the City of Sacramento, County of Sacramento, State of California
 Date of Survey: January 2001 - April 2002 Roy Heavenston PLS 7356
 1997.30 EPOCH COSS GPS CONTROL NETWORK

NE QUADRANT OF CITY



GPS NO.	NORTHING	EASTING	C.F.
G3305	1968423.431	6729944.908	0.99995850
G3404	1971028.744	6714732.698	0.99995794
G3405	1973929.815	6722630.459	0.99995581
G3406	1970306.377	6719152.549	0.99995818
G3407	1974308.492	6719241.359	0.99995635
G3408	1973313.792	6728353.482	0.99995641
G3409	1968999.154	6724851.059	0.99995813
G3410	1969411.071	6735094.630	0.99995787
G3505	1974841.300	6714613.954	0.99995533
G3506	1979312.189	6714451.018	0.99995435
G3507	1979319.004	6719447.890	0.99995436
G3508	1980666.383	6727432.610	0.99995286
G3509	1980031.494	6724389.970	0.99995379
G3605	1985205.688	6714746.533	0.99995190
G3606	1986180.416	6719246.775	0.99995133
G3607	1985542.901	6724531.871	0.99995085
G3706	1991240.460	6713531.157	0.99994956
G3707	1990715.395	6719598.771	0.99994951
G3708	1991335.266	6725462.330	0.99994879
G3709	1989715.412	6729748.720	0.99994896
G3805	1996272.509	6714609.000	0.99994793
G3806	1995479.768	6719560.226	0.99994773
G3807	1995914.544	6724563.894	0.99994699
G3808	1995629.904	6729343.096	0.99994641
G3809	1993175.190	6735279.450	0.99994691
G3810	1995812.446	6740946.282	0.99994582
G3908	2001037.088	6714320.607	0.99994584
G3909	2001183.015	6719897.796	0.99994545
G3910	2004730.318	6719498.654	0.99994413
G3911	2000716.088	6725869.672	0.99994474
G4005	2006224.762	6714113.302	0.99994367
G4006	2005985.371	6727289.226	0.99994289

SEE SHEET 1 AND 2 FOR NOTES, LEGEND AND BASIS OF BEARING.

63-29-5

MONUMENT NOTES:

- CALIFORNIA STATE HIGH PRECISION GEODETIC NETWORK (CA HPGN-D) FIXED STATIONS, AS COMPILED AND PUBLISHED BY CALTRANS IN AUGUST 2002.
- ▲ CITY OF SACRAMENTO GPS CONTROL STATIONS.
- SACRAMENTO CITY LIMITS

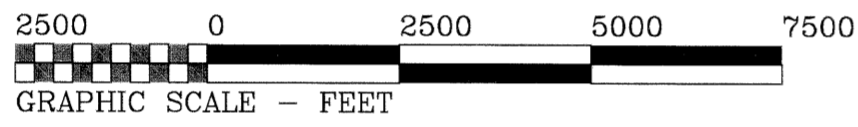
SEE SHEET 1 FOR CA HPGN-D FIXED STATION DATA.

SEE SHEET 2 FOR CONTROL NETWORK BEARINGS AND DISTANCES.

SEE SHEETS 7 FOR CONTROL MONUMENT DESCRIPTIONS.

CA HPGN-D DESCRIPTION DATASHEETS ARE AVAILABLE FROM THE NATIONAL GEODETIC SURVEY (NGS) WEBSITE.

■ HPGN D CA03 BG



GPS NO.	NORTHING	EASTING	C.F.
G2701	1928322.529	6704661.245	0.99997776
G2702	1929183.815	6711057.671	0.99997785
G2801	1937425.670	6692032.839	0.99997390
G2802	1935219.290	6696773.641	0.99997502
G2803	1935975.620	6708591.609	0.99997460
G2804	1932297.521	6705800.580	0.99997528
G2901	1943779.718	6689033.547	0.99997092
G2902	1942547.807	6691948.553	0.99997183
G2903	1939100.860	6698101.186	0.99997353
G2904	1943312.705	6698557.688	0.99997146
G2905	1942726.957	6703306.821	0.99997105
G2906	1943167.009	6708768.118	0.99997119
G2907	1939109.743	6704840.393	0.99997302
G3001	1948059.315	6689897.244	0.99996853
G3002	1948879.902	6693209.158	0.99996836
G3003	1948502.524	6697642.612	0.99996868
G3004	1948137.657	6703449.521	0.99996857
G3005	1947649.042	6708719.749	0.99996870
G3101	1954662.790	6697057.597	0.99996547
G3102	1953243.853	6703748.630	0.99996604
G3103	1954922.134	6708051.322	0.99996508
G3201	1959939.209	6701721.906	0.99996187
G3202	1957822.692	6708986.993	0.99996367
G3301	1964433.854	6703372.647	0.99996106
G3302	1964190.064	6710207.256	0.99996094

SEE SHEET 1 AND 2 FOR NOTES, LEGEND AND BASIS OF BEARING.



SCALE:
1" = 2500'



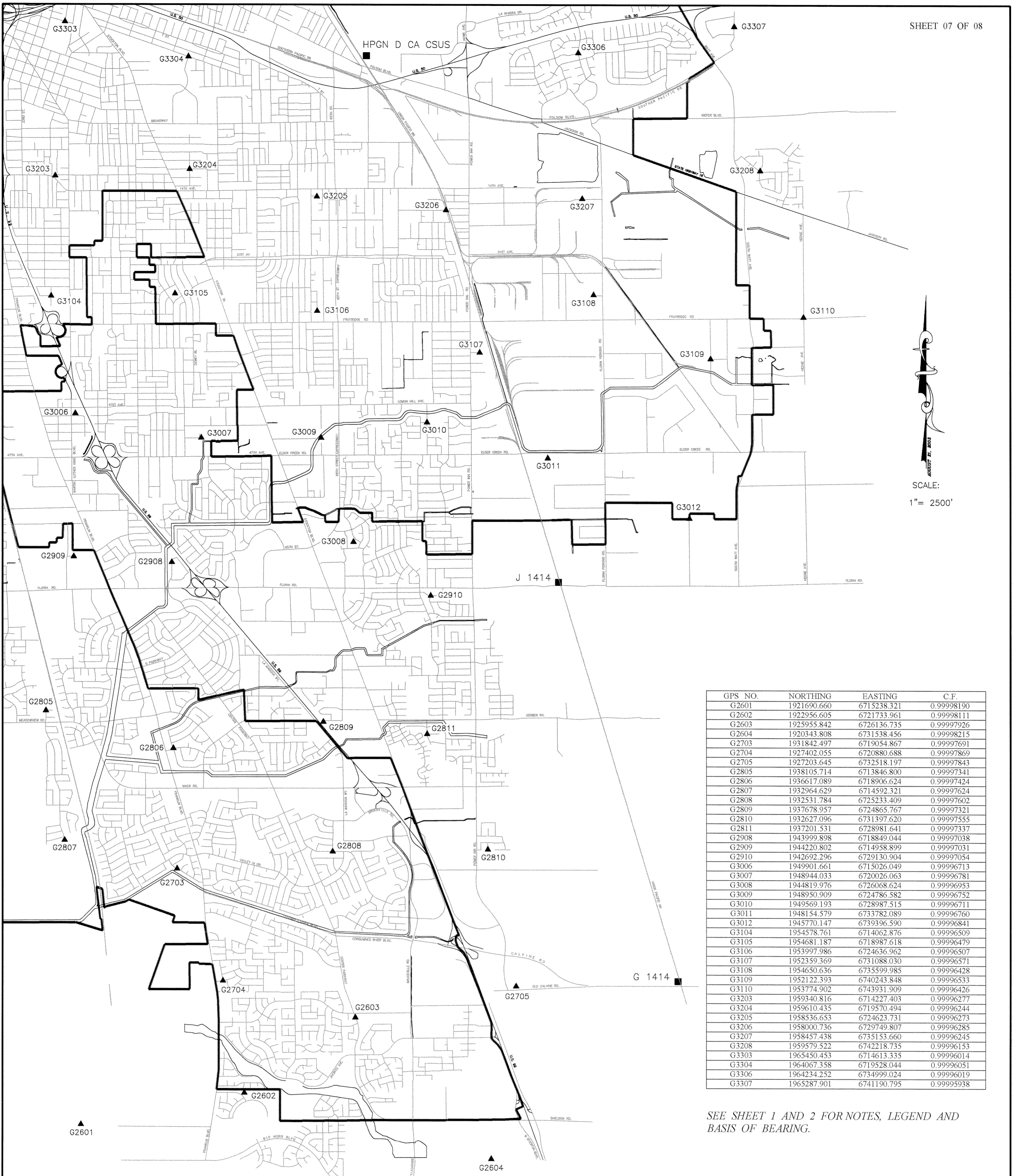
RECORD OF SURVEY GPS STATIC SURVEY

In the City of Sacramento, County of Sacramento, State of California
Date of Survey: January 2001 - April 2002 Roy Heavenston PLS 7356
1997.30 EPOCH COSS GPS CONTROL NETWORK

SW QUADRANT OF CITY

■ GAFFNEY

63-29-6



GPS NO.	NORTHING	EASTING	C.F.
G2601	1921690.660	6715238.321	0.99998190
G2602	1922956.605	6721733.961	0.99998111
G2603	1925955.842	6726136.735	0.99997926
G2604	1920343.808	6731538.456	0.99998215
G2703	1931842.497	6719054.867	0.99997691
G2704	1927402.055	6720880.688	0.99997869
G2705	1927203.645	6732518.197	0.99997843
G2805	1938105.714	6713846.800	0.99997341
G2806	1936617.089	6718906.624	0.99997424
G2807	1932964.629	6714592.321	0.99997624
G2808	1932531.784	6725233.409	0.99997602
G2809	1937678.957	6724865.767	0.99997321
G2810	1932627.096	6731397.620	0.99997555
G2811	1937201.531	6728981.641	0.99997337
G2908	1943999.898	6718849.044	0.99997038
G2909	1944220.802	6714958.899	0.99997031
G2910	1942692.296	6729130.904	0.99997054
G3006	1949901.661	6715026.049	0.99996713
G3007	1948944.033	6720026.063	0.99996781
G3008	1944819.976	6726068.624	0.99996953
G3009	1948950.909	6724786.582	0.99996752
G3010	1949569.193	6728987.515	0.99996711
G3011	1948154.579	6733782.089	0.99996760
G3012	1945770.147	6739396.590	0.99996841
G3104	1954578.761	6714062.876	0.99996509
G3105	1954681.187	6718987.618	0.99996479
G3106	1953997.986	6724636.962	0.99996507
G3107	1952359.369	6731088.030	0.99996571
G3108	1954650.636	6735599.985	0.99996428
G3109	1952122.393	6740243.848	0.99996533
G3110	1953774.902	6743931.909	0.99996426
G3203	1959340.816	6714227.403	0.99996277
G3204	1959610.435	6719570.494	0.99996244
G3205	1958536.653	6724623.731	0.99996273
G3206	1958000.736	6729749.807	0.99996285
G3207	1958457.438	6735153.660	0.99996245
G3208	1959579.522	6742218.735	0.99996153
G3303	1965450.453	6714613.335	0.99996014
G3304	1964067.358	6719528.044	0.99996051
G3306	1964234.252	6734999.024	0.99996019
G3307	1965287.901	6741190.795	0.99995938

SEE SHEET 1 AND 2 FOR NOTES, LEGEND AND BASIS OF BEARING.

RECORD OF SURVEY

GPS STATIC SURVEY

In the City of Sacramento, County of Sacramento, State of California
 Date of Survey: January 2001 - April 2002 Roy Heavenston PLS 7356
 1997.30 EPOCH COSS GPS CONTROL NETWORK

KELLER

SE QUADRANT OF CITY

63-29-7

RECORD OF SURVEY

GPS STATIC SURVEY

In the City of Sacramento, County of Sacramento, State of California
 Date of Survey: January 2001 - April 2002 Roy Heavenston PLS 7356
 1997.30 EPOCH COSS GPS CONTROL NETWORK

GPS #	DESCRIPTION AND LOCATION	GPS #	DESCRIPTION AND LOCATION	GPS #	DESCRIPTION AND LOCATION
G2601	FOUND 3/8" IP WITH BRASS WASHER MARKED "SAC. CO.". STATION IS NEAR INTERSECTION OF SIMS ROAD AND BUFFERLANDS ROAD, ±30 FEET SOUTHEAST OF RXR SPIKE WHICH IS 2.3 FEET ABOVE GROUND ON EAST SIDE OF POWER POLE. POWER POLE IS SOUTH OF A SACRAMENTO COUNTY WITNESS SIGN.	G3107	RADIUS POINT OF 35TH AVENUE CUL-DE-SAC. SET MAG AND BRASS WASHER MARKED "GPS CITY OF SACRAMENTO", OFF OF STREET TIES.	G3703	SET MAG WITH BRASS WASHER MARKED "GPS CITY OF SACRAMENTO". STATION IS IN AC DRIVEWAY ON FRONTAGE ROAD SOUTH SIDE OF SAN JUAN ROAD, WEST OF HIGHWAY 5 OVERPASS.
G2602	RADIUS POINT OF MOSS AGATE COURT. FOUND 1 1/4" IP. STATION IS NORTH OF LAKE PLEASANT DRIVE.	G3108	SET MAG AND BRASS WASHER MARKED "GPS CITY OF SACRAMENTO". STATION IS ON THE NORTH SIDE OF SHANK COURT, NORTH OF RADIUS POINT, WEST OF FLORIN-PERKINS ROAD.	G3704	RADIUS POINT OF CLARON COURT. SET PK AND BRASS WASHER MARKED "GPS CITY OF SACRAMENTO". STATION IS NORTH OF BANDON WAY.
G2603	SET MAG AND BRASS WASHER MARKED "GPS CITY OF SACRAMENTO". STATION IS ON SOUTHERLY MEDIAN OF CENTER PARKWAY ±150 FEET SOUTH OF INTERSECTION OF CALVINE ROAD AND CENTER PARKWAY, ±112 FEET SOUTH OF MEDIAN BULL-NOSE.	G3109	PI OF 88TH STREET AND 37TH AVENUE. FOUND 5/8" IP.	G3705	RADIUS POINT OF PELICAN COURT. FOUND 1" IP, INSET MAG AND BRASS WASHER MARKED "GPS CITY OF SACRAMENTO". STATION IS SOUTH OF SAN JUAN ROAD.
G2604	PI AT MICHENER WAY AND WEST STOCKTON BOULEVARD. FOUND 1" PLASTIC CAP MARKED "LS 5854".	G3110	SET MAG AND BRASS WASHER MARKED "GPS CITY OF SACRAMENTO". STATION IS IN AC ON NORTHWEST CORNER OF FRUITRIDGE ROAD AND HEDGE AVENUE.	G3706	FOUND 1/2" REBAR WITH FLAGGING. STATION IS ON NORTH EP OF FORD ROAD AT WESTERN AVENUE.
G2701	SET 2" IP WITH MAG AND BRASS WASHER MARKED "GPS CITY OF SACRAMENTO". STATION IS NORTHEAST OF FREPORT BRIDGE IN DECOMPOSED GRAVEL, ±25 FEET EAST OF RXR RAILS, 25 FEET NORTHWEST OF RXR SPIKE IN AC ON NORTHWEST CORNER OF FREPORT BOULEVARD AND FREPORT BRIDGE ROAD.	G3201	SET MAG AND BRASS WASHER MARKED "GPS CITY OF SACRAMENTO". STATION IS ON SACRAMENTO RIVER PARKWAY BIKE TRAIL, SOUTH OF MILLER PARK, ±800 FEET NORTH OF LOCKED GATE OFF OF SUTTERVILLE ROAD.	G3707	RADIUS POINT OF EVAN STREET. FOUND PK. STATION IS WEST OF RIO LINDA BOULEVARD.
G2702	SET 2 1/4" BRASS DISK MARKED "GPS CITY OF SACRAMENTO", ON CONCRETE GATE VALVE PAD, SOUTH OF SUMP 189. STATION IS ON THE SOUTH SIDE OF UPPER BEACH LAKE WILDLIFE PRESERVE LEVEE ROAD, EAST OF A LOCKED BARRIER GATE, ON THE SOUTHEAST CORNER OF CENTER CONCRETE PAD.	G3202	PI OF ATTAWA AVENUE AND 16TH AVENUE. SET MAG AND BRASS WASHER MARKED "GPS CITY OF SACRAMENTO", OFF OF STREET TIES.	G3708	PI OF LOS ROBLES BOULEVARD AND MONTROSE STREET. FOUND MAG.
G2703	PRC OF TORRENTE WAY. SET MAG AND BRASS WASHER MARKED "GPS CITY OF SACRAMENTO", OFF OF STREET TIES.	G3203	RADIUS POINT OF 12TH AVENUE CUL-DE-SAC. SET MAG AND BRASS WASHER MARKED "GPS CITY OF SACRAMENTO". STATION IS WEST OF 38TH STREET.	G3709	PI OF FRAZIER COURT AND DUNLAP DRIVE. FOUND 1" IP WITH MAG.
G2704	PI OF VILLAGE STAR AND NIGHTFALL WAY. FOUND 1" IP.	G3204	PI OF 50TH STREET AND 11TH AVENUE. FOUND PK.	G3801	PI OF STEMMLER DRIVE AND ARENA BOULEVARD. FOUND BRASS DISK IN MONUMENT WELL MARKED "LS 5854 CITY OF SACRAMENTO".
G2705	PI OF OLD CALVINE ROAD AND PATMON DRIVE. FOUND 1 1/4" IP WITH MAG.	G3205	RADIUS POINT OF 63RD STREET CUL-DE-SAC. SET MAG AND BRASS WASHER MARKED "GPS CITY OF SACRAMENTO". STATION IS EAST OF 63RD STREET.	G3802	PI OF EAST COMMERCE WAY AND ARENA BOULEVARD (FORMERLY STADIUM BOULEVARD). FOUND MONUMENT WELL WITH 2 1/2" BRASS DISK AND PUNCH MARK.
G2801	RADIUS POINT FOR NADER COURT. SET MAG AND BRASS WASHER MARKED "GPS CITY OF SACRAMENTO", OFF OF STREET TIES. STATION IS EAST OF SAILFISH WAY.	G3206	PI OF WEST RAILROAD AVENUE AND 17TH AVENUE. SET MAG (NEXT TO RXR SPIKE WITHOUT A PUNCH MARK) OFF OF STREET TIES.	G3803	RADIUS POINT OF NATIONAL DRIVE. FOUND 1" IP, INSET MAG AND BRASS WASHER MARKED "GPS CITY OF SACRAMENTO". STATION IS WEST OF SIERRA POINT.
G2802	RADIUS POINT OF RIVERSHORE COURT. SET MAG AND BRASS WASHER MARKED "GPS CITY OF SACRAMENTO", OFF OF STREET TIES. STATION IS SOUTH OF POCKET ROAD.	G3207	SET MAG AND BRASS WASHER MARKED "GPS CITY OF SACRAMENTO". STATION IS ±0.5 FEET SOUTH OF LIP ON NORTH SIDE OF BELVEDERE AVENUE, ACROSS FROM ENTRANCE TO 8440 AND 8460 BELVEDERE.	G3804	RADIUS POINT OF VISTA PARK COURT. FOUND 1" IP, INSET MAG AND BRASS WASHER MARKED "GPS CITY OF SACRAMENTO". STATION IS SOUTH OF PI OF NATIONAL DRIVE AND VISTA PARK COURT.
G2803	PI OF 22ND STREET AND JOHN STILL DRIVE. SET MAG AND BRASS WASHER MARKED "GPS CITY OF SACRAMENTO", OFF OF STREET TIES.	G3208	PI OF CANBERRA DRIVE AND BAIRNSDALE WAY (E). FOUND 1" IP.	G3805	RADIUS POINT OF DUBOIS AVENUE. FOUND 1" IP WITH BRASS WASHER AND NAIL, MARKED "3383". STATION IS 188 FEET WEST OF ENGELWOOD STREET.
G2804	FOUND PK AND SHINER IN LARGE FLT-X ON STONECREST AVENUE. STATION IS ON THE EAST SIDE OF RIVER BEND OVERPASS.	G3301	PI OF 4TH AVENUE AND 10TH STREET. SET MAG AND BRASS WASHER MARKED "GPS CITY OF SACRAMENTO", OFF OF STREET TIES.	G3806	PI ROSE STREET AND NORTH AVENUE. FOUND SMALL PK.
G2805	PI OF TIDSDALE WAY AND LANE COURT. SET MAG AND BRASS WASHER MARKED "GPS CITY OF SACRAMENTO", OFF OF STREET TIES.	G3302	PI 26TH STREET AND 2ND AVENUE. SET MAG AND BRASS WASHER MARKED "GPS CITY OF SACRAMENTO", OFF OF STREET TIES.	G3807	SET MAG AND BRASS WASHER MARKED "GPS CITY OF SACRAMENTO". STATION IS IN MARYSVILLE CUL-DE-SAC, ±280 FEET NORTHWEST OF CENTERLINE OF MARYSVILLE BOULEVARD, NORTHWEST OF PI OF MARYSVILLE BOULEVARD AND DOOLITTLE STREET, ±20 FEET EAST OF THE WEST EP, BETWEEN RESIDENCE 4033 AND 4037 MARYSVILLE CUL-DE-SAC.
G2806	BC OF QUIMBY WAY. SET MAG AND BRASS WASHER MARKED "GPS CITY OF SACRAMENTO", OFF OF STREET TIES. STATION IS ±30 FEET NORTH OF BOYCE DRIVE.	G3303	PI OF 35TH STREET AND 'V' STREET. SET MAG AND BRASS WASHER MARKED "GPS CITY OF SACRAMENTO".	G3808	FOUND FLT-X WITH SMALL PK. STATION IS ON THE WEST SIDE OF MOGAN AVENUE, ±230 FEET NORTH OF INTERSECTION OF NORTH AVENUE AND MOGAN AVENUE, ±120 FEET SOUTH OF MOGAN AVENUE AP.
G2807	FOUND COTTON GIN TOOTH IN CENTER OF FLT-X MARKED "ANDREGG SURVEYING #010-116". STATION IS ON THE SOUTHERLY TERMINUS OF DETROIT BOULEVARD, SOUTHWEST OF INTERSECTION OF DEERHAVEN WAY AND DETROIT BOULEVARD.	G3304	PI OF 49TH STREET AND 'V' STREET. FOUND PK.	G3809	FOUND FLT-X WITH GIN TOOTH MARKED "ANDREGG INC 4-24". STATION IS ON NORTH SIDE OF AUBURN BOULEVARD, NORTH OF INTERSECTION OF MORSE AVENUE AND AUBURN BOULEVARD.
G2808	PI OF GRANDSTAFF DRIVE AND HANFORD WAY. SET MAG AND BRASS WASHER MARKED "GPS CITY OF SACRAMENTO", OFF OF STREET TIES.	G3305	FOUND REDHEAD AND REPLACED WITH MAG AND BRASS WASHER MARKED "GPS CITY OF SACRAMENTO". STATION IS AT SWARTHMORE DRIVE AND COMMONS DRIVE.	G3810	FOUND FLT-X WITH SURVEY MARK "ANDREGG INC". STATION IS ON THE SOUTHEAST CORNER OF AUBURN BOULEVARD AND BERESFORD WAY.
G2809	SET MAG AND BRASS WASHER MARKED "GPS CITY OF SACRAMENTO". STATION IS SOUTH OF RADIUS POINT, OFF OF TANGERINE AVENUE CUL-DE-SAC.	G3306	PI OF CITADEL WAY AND OCCIDENTAL DRIVE. FOUND 1" IP WITH PK IN THE CENTER.	G3901	FOUND ALUMINUM CAP OVER 3/4" IP MARKED "DWR-SR 66-8L 0148". STATION IS WEST OF INTERSECTION OF POWER LINE ROAD AND GARDEN HIGHWAY.
G2810	RADIUS POINT OF ORABELLE COURT. FOUND 1" IP. STATION IS SOUTH OF SPIELBURG WAY.	G3307	PI OF CASALS STREET AND MANLOVE ROAD. FOUND 3/4" IP WITH MAG.	G3902	SET MAG AND BRASS WASHER MARKED "GPS CITY OF SACRAMENTO". STATION IS IN AC DRIVEWAY OF COMMUNICATION YARD, ON THE SOUTH SIDE OF DEL PASO ROAD, WEST OF WEST DRAINAGE CANAL.
G2811	PI OF BOGEY COURT AND PAR PARKWAY. FOUND 1" IP.	G3401	SET MAG AND BRASS WASHER MARKED "GPS CITY OF SACRAMENTO", IN AC PARKING LOT. STATION IS ON THE WEST SIDE OF MARINE VIEW DRIVE, ±185 FEET SOUTHWEST OF THE NORTHWEST ENTRANCE TO MILLER PARK, AND SOUTHWEST OF RAMP WAY.	G3903	PI OF DEL PASO ROAD AND TOWN CENTER. FOUND BRASS DISK IN MONUMENT WELL, MARKED "LS3013 EL-2426 FT".
G2901	PI OF WARBLER WAY AND AUDUBON CIRCLE (S). FOUND PK, VERIFIED WITH STREET TIES.	G3402	SET MAG AND BRASS WASHER MARKED "GPS CITY OF SACRAMENTO" IN 2" IP. STATION IS ON NORTH SIDE OF SOUTH SIDE PARK POND, 2 FEET NORTH OF CONCRETE RUNOFF STRUCTURE, 2 FEET SOUTH OF CONCRETE WALKWAY, ±40 FEET SOUTHWEST OF COSTILLA STATUE.	G3904	FOUND RXR SPIKE WITH PUNCH MARK ON DEL PASO ROAD HIGHWAY 99 OVERPASS. STATION IS IN THE WEST BOUND #1 LANE, ON THE EAST EDGE OF THE FREEWAY OVERPASS.
G2902	PI OF HIDDEN LAKE CIRCLE AND SNOW RIVER WAY. FOUND 1" IP, INSET MAG AND BRASS WASHER MARKED "GPS CITY OF SACRAMENTO", VERIFIED WITH STREET TIES.	G3403	SET MAG AND BRASS WASHER MARKED "GPS CITY OF SACRAMENTO", ON AC BASKETBALL COURT. STATION IS EAST OF ALHAMBRA BOULEVARD, NORTH OF 'J' STREET, ±72 FEET SOUTH OF THE MOST WESTERLY REAR DOOR OF THE SOUTHWEST BUILDING OF SUTTER MIDDLE SCHOOL, ON THE SOUTH AND EAST STRIPPING LINE OF BASKETBALL COURT.	G3905	SET 2 3/4" BRASS DISK MARKED "GPS CITY OF SACRAMENTO", IN 2" IP WITH CONCRETE. STATION SET INSIDE CAPITAL GATEWAY RESERVOIR (SUMP 15), ±158 FEET SOUTH OF THE SOUTHWEST CORNER OF THE CONTROL ROOM BUILDING, 32 FEET SOUTH OF THE EP, ON A GRAVEL ROAD, ±52 FEET NORTH OF THE SOUTH ENTRANCE TO SUMP 15.
G2903	PI OF DESERTWIND WAY AND FALLWIND CIRCLE (N). FOUND 1" IP, VERIFIED WITH STREET TIES.	G3404	SET MAG AND BRASS WASHER MARKED "GPS CITY OF SACRAMENTO", ON AC BASKETBALL COURT. STATION IS EAST OF ALHAMBRA BOULEVARD, NORTH OF 'J' STREET, ±72 FEET SOUTH OF THE MOST WESTERLY REAR DOOR OF THE SOUTHWEST BUILDING OF SUTTER MIDDLE SCHOOL, ON THE SOUTH AND EAST STRIPPING LINE OF BASKETBALL COURT.	G3906	SET CROSS CUT RXR SPIKE IN 2" IP. STATION IS AT THE BEGINNING OF LANDSCAPE AREA IN EAST MEDIAN STRIP ON DEL PASO ROAD, ±285 FEET EAST OF INTERSECTION OF GATEWAY PARK BOULEVARD AND DEL PASO ROAD.
G2904	AP OF SIX RIVERS CIRCLE. FOUND 1" IP. STATION IS EAST OF GREENHAVEN DRIVE.	G3405	SET MAG AND BRASS WASHER MARKED "GPS CITY OF SACRAMENTO", AT SUMP 10. STATION IS IN AC AT TOP OF RAMP, NORTH OF CONTROL BUILDING, SOUTH OF LEVEE ROAD, NORTH OF INTERSECTION OF SANDBURG DRIVE AND CARRINGTON STREET.	G3907	FOUND BOLT WITH LARGE WASHER SET IN CONCRETE. STATION IS IN WELL WITH WATER VALVE COVER, EAST OF PI OF SORENTO ROAD AND DEL PASO ROAD, IN THE NUMBER ONE WESTBOUND LANE.
G2905	SET MAG AND BRASS WASHER MARKED "GPS CITY OF SACRAMENTO". STATION IS IN AC ON EAST ISLAND OF FLORIN ROAD, ±250 FEET EAST OF INTERSECTION OF FLORIN ROAD AND FREPORT BOULEVARD.	G3406	PI OF FERN COURT AND ELVAS AVENUE/C' STREET. SET MAG AND BRASS WASHER MARKED "GPS CITY OF SACRAMENTO", OFF OF STREET TIES.	G3908	RADIUS POINT OF COSTA BRASE COURT. FOUND PK. STATION IS WEST OF LATTE WAY.
G2906	PI OF TAMOSHANTER WAY AND DEMARET DRIVE. SET MAG AND BRASS WASHER MARKED "GPS CITY OF SACRAMENTO", OFF OF STREET TIES.	G3407	SET MAG AND BRASS WASHER MARKED "GPS CITY OF SACRAMENTO". STATION NEAR THE INTERSECTION OF 'I' STREET AND MISSION/42ND STREET.	G3909	PI PINE NUT WAY AND WIND CREEK DRIVE. FOUND PK.
G2907	PI OF 69TH AVENUE AND CARELLA DRIVE. SET MAG AND BRASS WASHER MARKED "GPS CITY OF SACRAMENTO", OFF OF STREET TIES.	G3408	SET MAG AND BRASS WASHER MARKED "GPS CITY OF SACRAMENTO". STATION IS ON SPANOS COURT, ±10 FEET SOUTHWEST OF RADIUS POINT.	G3910	FOUND PLASTIC CAP MARKED "RCE 21640". STATION IS ON THE CENTERLINE OF ROSE STREET AND THE PROJECTION OF VINCI AVENUE, SOUTH OF RESIDENCE 5404 ROSE STREET.
G2908	BC OF EAST PARKWAY. FOUND 1 1/2" IP. STATION IS NORTH OF GOVERNORS CIRCLE.	G3409	SET MAG AND BRASS WASHER MARKED "GPS CITY OF SACRAMENTO", IN AC ISLAND. STATION IS ON THE MOST SOUTHERLY ISLAND ON 'H' STREET, WEST OF CENTERLINE OF CARLSON DRIVE, BETWEEN NEWMAN COURT AND 'H' STREET.	G3911	PI OF MAIN AVENUE AND BELOIT DRIVE. SET MAG AND BRASS WASHER MARKED "GPS CITY OF SACRAMENTO".
G2909	RADIUS POINT OF TURNBRIDGE ROAD. SET MAG AND BRASS WASHER MARKED "GPS CITY OF SACRAMENTO". STATION IS EAST OF LUTHER DRIVE.	G3410	PI OF LATHAM DRIVE AND MILLS ROAD. FOUND 1" IP.	G4001	EC OF BAYOU WAY. FOUND FLT-X WITH LARGE PK SOUTH OF HIGHWAY 5. STATION IS ±330 FEET WEST OF A CITY VERTICAL BENCHMARK # 4033.01 A HILTI NAIL ON THE WEST END AND TOP OF HEADWALL ON WEST DRAINAGE CANAL. SOUTH SIDE OF BAYOU WAY.
G2910	PI OF LAMER WAY AND FLAMINGO WAY. FOUND 1" IP.	G3501	SET MAG AND BRASS WASHER MARKED "GPS CITY OF SACRAMENTO", IN 2" IP. STATION IS ±10 FEET WEST OF WEST EP OF JEDDEDAH SMITH NATIONAL RECREATION TRAIL, ON EAST BANK OF SACRAMENTO RIVER, ±330 YARDS UPSTREAM FROM THE 'T' STREET RAILROAD BRIDGE, ±100 FEET NORTH OF THE STATE OF CALIFORNIA AUTOMATIC RIVER GAUGE.	G4002	CENTERLINE OF EASTBROOK WAY. FOUND MAG. STATION IS ±270 FEET WEST OF ALAZAR COURT.
G3001	EC OF BAJA COURT. SET MAG AND BRASS WASHER MARKED "GPS CITY OF SACRAMENTO", OFF OF STREET TIES.	G3502	SET MAG AND BRASS WASHER MARKED "GPS CITY OF SACRAMENTO", ON AC PATH. STATION IS ON DISCOVERY PARK BIKE TRAIL, SOUTHWEST OF JIBBOOM STREET BRIDGE, 50 FEET WEST OF THE WEST BIKE TRAIL GATE, 3 FEET NORTH OF THE SOUTH EP.	G4003	SET MAG AND BRASS WASHER MARKED "GPS CITY OF SACRAMENTO", ON DANBROOK DRIVE. STATION IS NORTH OF PI OF CLUB CENTER DRIVE AND DANBROOK DRIVE.
G3002	PI OF IRONWOOD WAY AND SEASTONE WAY. SET MAG AND BRASS WASHER MARKED "GPS CITY OF SACRAMENTO", OFF OF STREET TIES.	G3503	CENTERLINE OF NORTH 10TH STREET. FOUND RXR SPIKE. STATION IS ±9 FEET SOUTH OF THE PI OF VINE AND NORTH 10TH STREET.	G4004	FOUND FLT-X WITH PK AND SHINER MARKED "PSOMAS". STATION IS ON THE EAST SIDE SORENTO ROAD, ±250 FEET NORTH OF MAILBOX AT RESIDENCE 5620 SORENTO, ±1200 FEET SOUTH OF EAST LEVEE ROAD AND SORENTO ROAD.
G3003	PI OF GREENHAVEN DRIVE AND STARLT CIRCLE (S). SET MAG AND BRASS WASHER MARKED "GPS CITY OF SACRAMENTO", OFF OF STREET TIES.	G3504	SET MAG AND BRASS WASHER MARKED "GPS CITY OF SACRAMENTO". STATION IS NEAR INTERSECTION OF AHERN STREET AND 'A' STREET.	G4005	NORTH AP OF WEST ASCOT AVENUE. FOUND 1 1/2" IP WITH NAIL, 3" BELOW AC. STATION IS ±33 FEET SOUTHEAST OF PI AT ASCOT AVENUE AND WEST 2ND STREET.
G3004	PI OF BELLEAUWOOD LANE AND 47TH AVENUE. FOUND PK.	G3505	REPLACED PK WITH MAG AND BRASS WASHER MARKED "GPS CITY OF SACRAMENTO", ON CENTERLINE OF 28TH STREET. STATION IS 0.1 MILES NORTH THE INTERSECTION OF 'B' AND 28TH STREET, ±220 FEET NORTH OF CENTERLINE RXR TRACKS.	G4006	PI OF 20TH STREET AND ASCOT AVENUE. FOUND 1" IP.
G3005	PI OF ARLISS WAY AND 23RD STREET. FOUND PK, VERIFIED WITH STREET TIES.	G3506	SET MAG AND BRASS WASHER MARKED "GPS CITY OF SACRAMENTO". STATION ON WEST SIDE OF LATHROP WAY (W), ±150 FEET SOUTH OF CENTERLINE RXR TRACKS, SOUTH OF COMMERCE CIRCLE.	G4101	SECTION CORNER T10N, R5E, S29-28/32-33. FOUND 1 1/4" IP WITH LARGE BENT NAIL 0.5 FEET BELOW EXISTING GROUND. STATION IS ±65 FEET SOUTH OF CENTERLINE OF ELKHORN BOULEVARD ON LONE TREE ROAD.
G3006	SET MAG AND BRASS WASHER MARKED "GPS CITY OF SACRAMENTO". STATION ON WEST EDGE AND CENTERLINE OF BASKETBALL COURT IN MARTIN LUTHER KING PARK, NORTHEAST OF INTERSECTION OF 42ND AVENUE AND MARTIN LUTHER KING JR. BOULEVARD.	G3507	RADIUS POINT OF TRIBUTE ROAD. FOUND SMALL PK.	G4102	SET MAG AND BRASS WASHER MARKED "GPS CITY OF SACRAMENTO". STATION IS ON THE NORTHEAST SIDE OF ELKHORN BOULEVARD ON THE HIGHWAY 99 OVERPASS, ±7 FEET SOUTH OF NORTH GUARDRAIL, ±4 FEET SOUTH OF CULVERT.
G3007	RADIUS POINT MORNING STAR DRIVE. SET MAG AND BRASS WASHER MARKED "GPS CITY OF SACRAMENTO", OFF OF STREET TIES.	G3508	PI OF MIDDLEBERRY ROAD AND ETHAN WAY. FOUND 5/8" IP, INSET MAG AND BRASS WASHER MARKED "GPS CITY OF SACRAMENTO", VERIFIED WITH STREET TIES.	G4103	FOUND REBAR WITH PLASTIC CAP MARKED "KASI ENGINEERING", WEST OF DRIVEWAY OF NATOMAS MUTUAL WATER CO. AT 2601 ELKHORN BOULEVARD. STATION IS ±20 FEET NORTH OF NORTH EP OF ELKHORN BOULEVARD, ±15 FEET WEST OF WEST EP OF AC DRIVEWAY.
G3008	SET MAG AND BRASS WASHER MARKED "GPS CITY OF SACRAMENTO". STATION IS ON WEST SIDE OF RODNEY COURT, SOUTHWEST OF CUNNINGHAM WAY.	G3509	SET MAG AND BRASS WASHER MARKED "GPS CITY OF SACRAMENTO". STATION IS ±84 FEET SOUTH SOUTHWEST OF THE SOUTH CENTERLINE ROUND CORNER OF HERITAGE LAND AND RESPONSE ROAD, IN THE NORTHWEST CORNER OF THE KAISER PARKING LOT, ±3 NORTHEAST OF A PARKING LOT ISLAND, ±63 FEET SOUTHWEST OF THE KAISER PERMANENTE SIGN.	G4104	FOUND LARGE NAIL. ATTACHED BRASS WASHER MARKED "GPS CITY OF SACRAMENTO". STATION IS 0.3 MILES EAST OF INTERSECTION OF NATOMAS BOULEVARD AND ELKHORN BOULEVARD, ±27 FEET NORTH OF THE NORTH EP OF ELKHORN BOULEVARD, IN GRAVEL LEVEE ROAD SOUTH OF DRAINAGE CANAL.
G3009	SET MAG AND BRASS WASHER MARKED "GPS CITY OF SACRAMENTO". STATION IS ON MORRISON CREEK BIKE PATH, BETWEEN BOLLARDS AT THE NORTH END OF 63RD STREET, NORTH OF ELDER CREEK ROAD.	G3601	FOUND PK IN FLT-X MARKED "#219". STATION IS NEAR DRIVEWAY OF RESIDENCE 2072 GARDEN HIGHWAY, NORTH SIDE OF GARDEN HIGHWAY AND EAST OF SAND COVE PARK.	G4105	SECTION CORNER. FOUND BRASS DISC, STAMPED "T10N, R4E-R5E, S25-S30/S36-S31, LS2787". STATION IS ON MARNICIE ROAD, NORTH SIDE OF ELKHORN BOULEVARD, NORTH OF THE WALTER S. UEDA PARKWAY, AND EAST OF THE NATOMAS EAST MAIN DRAIN CANAL.
G3010	PI OF STALLINGS DRIVE AND LOGAN STREET. FOUND PK, VERIFIED WITH STREET TIES.	G3602	RADIUS POINT OF EL CENTRO ROAD. FOUND 1 1/4" IP WITH 3/4" BOLT IN THE CENTER. STATION IS SOUTH OF TOMATO PATCH LANE.		
G3011	SET MAG AND BRASS WASHER MARKED "GPS CITY OF SACRAMENTO", IN AC BEHIND SUMP 148. STATION IS ON THE SOUTH SIDE OF ELDER CREEK ROAD, EAST OF POWER INN ROAD, SOUTH OF THE SOUTH GATE OF SUMP 148 AND NORTH OF THE WEST PROPANE TANK.	G3603	SET MAG AND BRASS WASHER MARKED "GPS CITY OF SACRAMENTO". STATION IS IN AN ISLAND ON THE NORTH SIDE OF GARDEN HIGHWAY, ±0.3 MILES EAST OF ORCHARD LANE, ±315 FEET EAST OF THE CENTERLINE OF THE MAIN DRAINAGE CANAL, AND SOUTHWEST OF AN ACCESS ROAD LEADING NORTH TO RIVER PLAZA DRIVE.		
G3012	FOUND LARGE NAIL IN AC NORTH END ON GARDNER AVENUE, SOUTHWEST OF RESIDENCE 6731 GARDNER AVENUE. STATION IS ±18 FEET NORTHWEST OF POWER POLE (#6801), ±24 FEET NORTHEAST OF 6"X6" WOODEN CORNER FENCE POST.	G3604	PI OF DORINE WAY AND ATHENA AVENUE. FOUND 1" IP, INSET MAG AND BRASS WASHER MARKED "GPS CITY OF SACRAMENTO".		
G3101	PI OF PIEDMONT DRIVE AND SKIPPER CIRCLE (S). FOUND 3/4" IP, 1 1/4" BELOW AC.	G3605	PI COLFAX STREET AND SANTIAGO AVENUE. SET MAG AND BRASS WASHER MARKED "GPS CITY OF SACRAMENTO", VERIFIED WITH STREET TIES.		
G3102	SET MAG AND BRASS WASHER MARKED "GPS CITY OF SACRAMENTO". STATION IS ON FRONTAGE ISLAND SOUTH OF FRUITRIDGE ROAD, EAST OF GILGUNN WAY, ACROSS FROM AND BETWEEN RESIDENCE 1434 AND 1438 FRUITRIDGE ROAD.	G3606	PI OF LAMPASAS AVENUE AND BEAUMONT STREET. FOUND 5/8" IRON PIN.		
G3103	SET MAG AND BRASS WASHER MARKED "GPS CITY OF SACRAMENTO". STATION IS ADJACENT TO AP OF HOLLYWOOD WAY AND CARMEN WAY.	G3607	PI OF FRIENZA AVENUE AND PRINCETON STREET. FOUND PK.		
G3104	PI OF 27TH AVENUE AND STRAWBERRY LANE. SET MAG AND BRASS WASHER MARKED "GPS CITY OF SACRAMENTO", REPLACING SMALL PK VERIFIED WITH STREET TIES.	G3701	FOUND 3" BRASS MONUMENT IN CONCRETE MARKED "DEPT OF WATER RESOURCES 64-8L 1976", ±155 FEET NORTHEAST OF INTERSECTION OF SAN JUAN ROAD AND GARDEN HIGHWAY.		
G3105	SET MAG AND BRASS WASHER MARKED "GPS CITY OF SACRAMENTO". STATION IS ON THE WEST FOUL LINE AND CENTERLINE OF BASKETBALL COURT AT LAWRENCE PARK NORTH OF LAWRENCE DRIVE AND 46TH STREET.	G3702	AP OF ZALEMA WAY. REPLACED DAMAGED PK WITH MAG AND BRASS WASHER MARKED "GPS CITY OF SACRAMENTO". STATION IS WEST OF JABBOUR WAY.		
G3106	RADIUS POINT OF NELSON STREET CUL-DE-SAC. SET MAG AND BRASS WASHER MARKED "GPS CITY OF SACRAMENTO", OFF OF STREET TIES.				

ABBREVIATIONS

AC	ASPHALTIC CONCRETE
AP	ANGLE POINT
BC	BEGINNING OF CURVE
CF	COMBINATION FACTOR
EC	END OF CURVE
EH	ELLIPSOID HEIGHT
EP	EDGE OF PAVEMENT
FLT-X	FLIGHT CROSS
GPS	GLOBAL POSITIONING SYSTEM
IP	IRON PIPE
MAG	MAGNETIZED NAIL
PI	POINT OF INTERSECTION
PK	"P.K." MASONRY NAIL
PRC	POINT OF REVERSE CURVE
RXR	RAILROAD

63-29-8