



Welcome



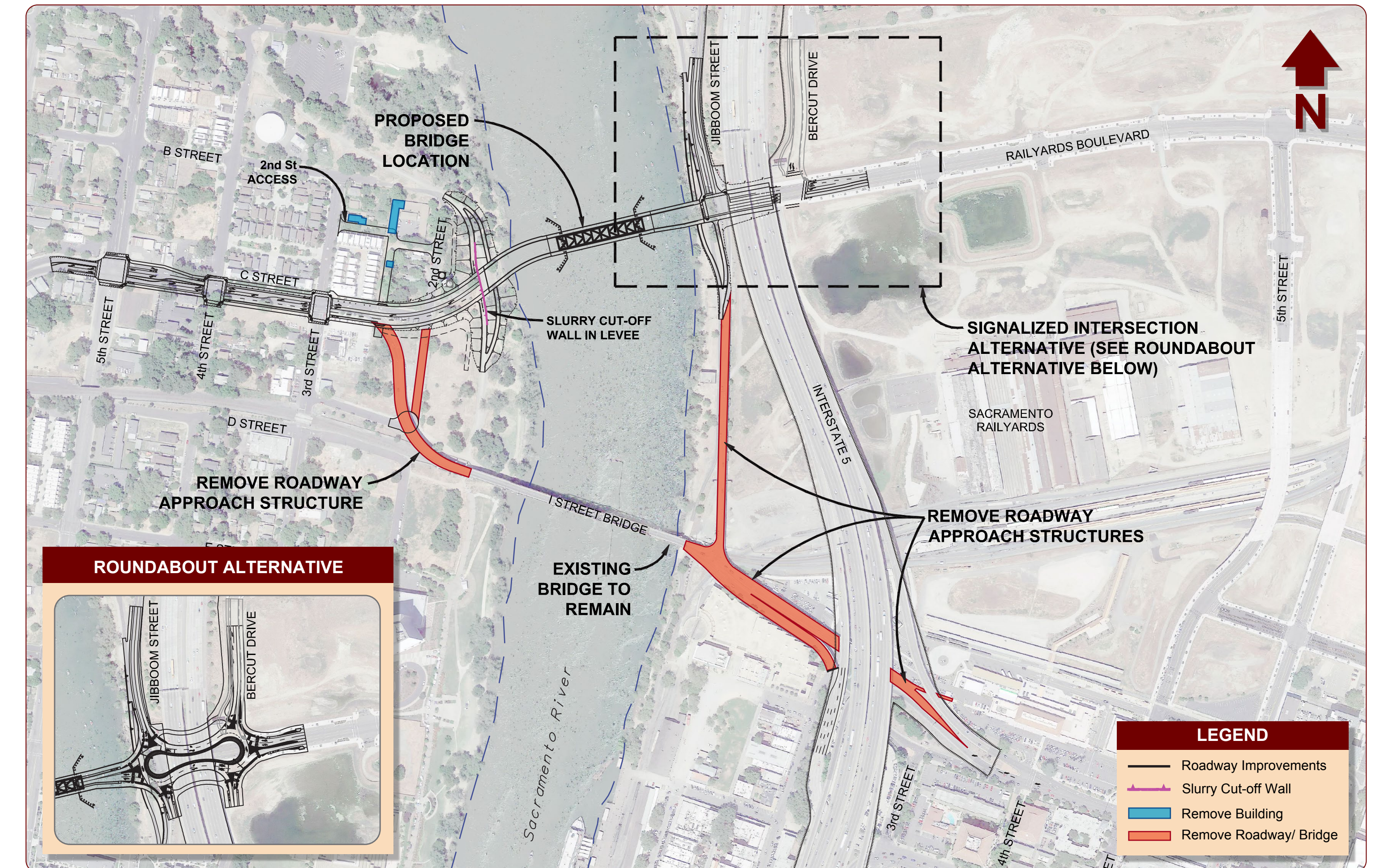
Project Goals

Project Goals

- Increase economic development
- Improve potential for urban planned development
- Make walking and bicycling across the River easier
- Reduce vehicle delays
- Increase riverfront access
- Improve travel safety and emergency access

What is a Neighborhood Friendly Bridge?

- Serves short, local trips
- Serves all users
- Architecturally pleasing
- Does not require approach roadway widening
- Low speed / Low profile
- Does not connect to streets that are primarily residential





Project Schedule

Project
Approval &
Environmental
Document
(PA&ED)

2017

Final
Design

2017–18

Construction

2019–21

PUBLIC PARTICIPATION

City of
SACRAMENTO





Historical Bridges

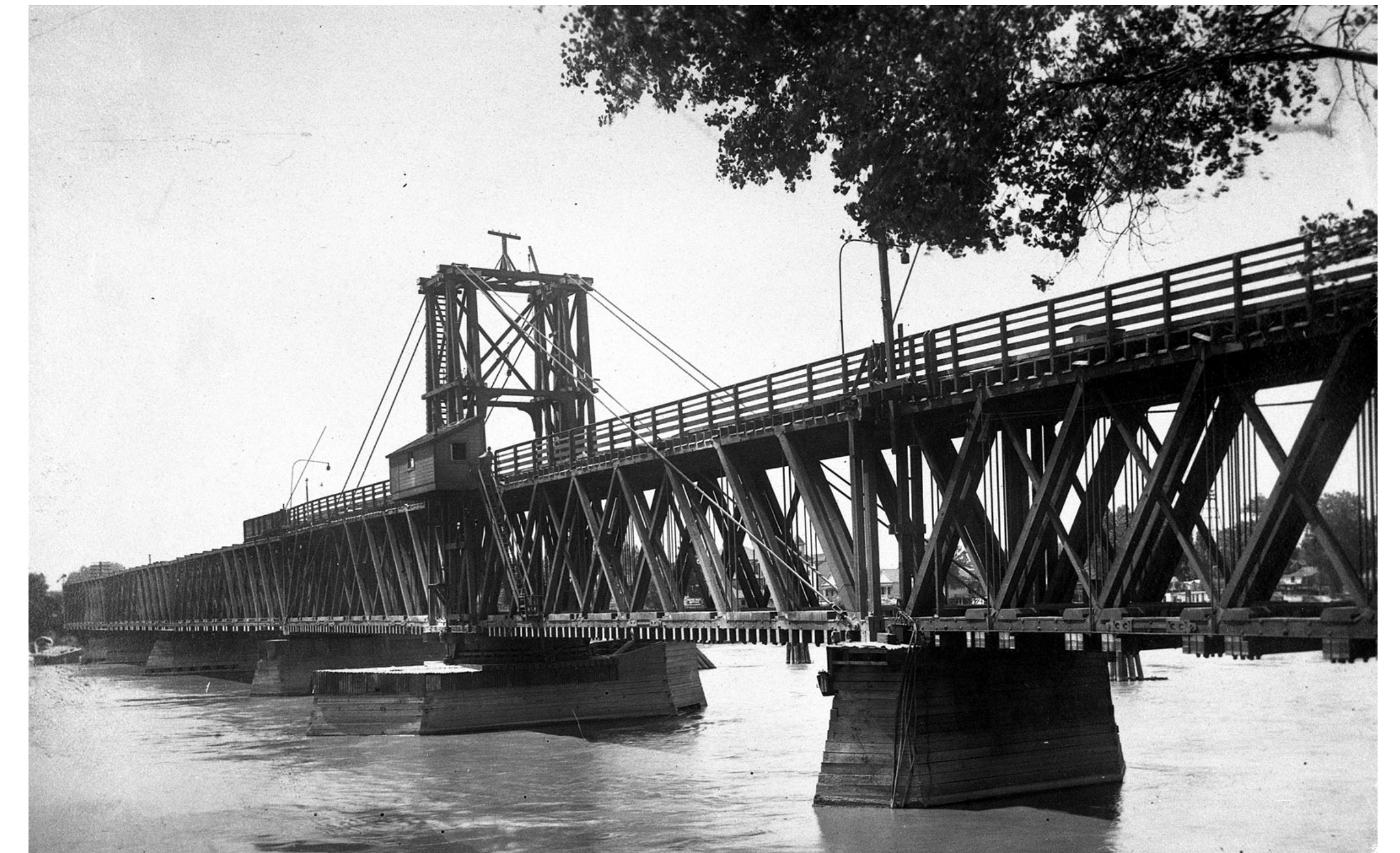
All photos provided by the California State Railroad Museum



The Wagon Bridge
(1858 - 1869)



The California Pacific Bridge
(1869 - 1878)



Southern Pacific Bridge
(1895 - 1912)



Historical Bridges

All photos provided by the California State Railroad Museum



Southern Pacific Bridge and I Street Bridge
Bridges closed; train crossing



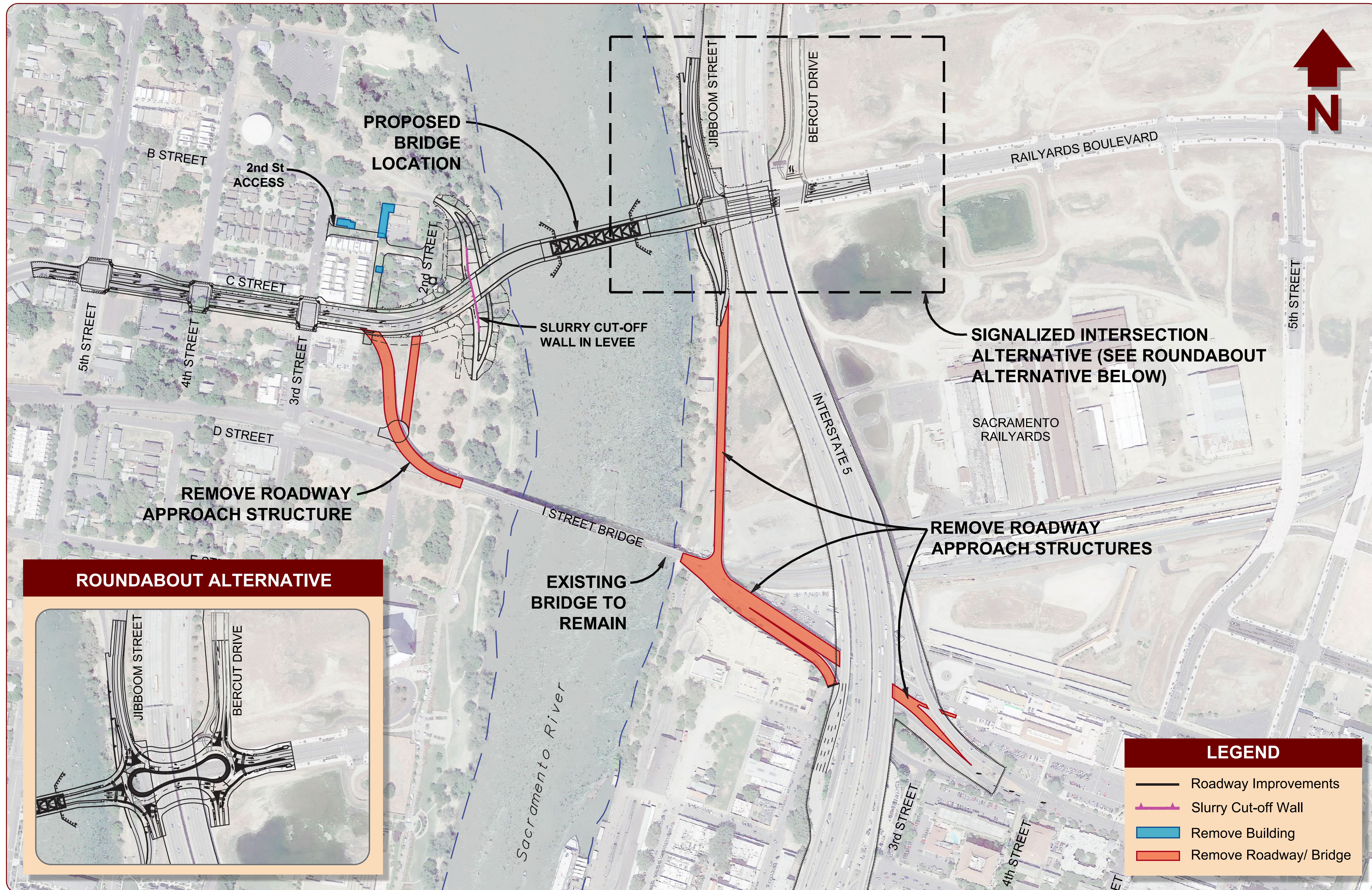
Southern Pacific Bridge and I Street Bridge
Bridges open



Project Alternatives



Project Overview





Riverfront Opportunities



The existing I Street Bridge with viaducts



Removal of viaducts allows for better connections to the Sacramento River waterfront.

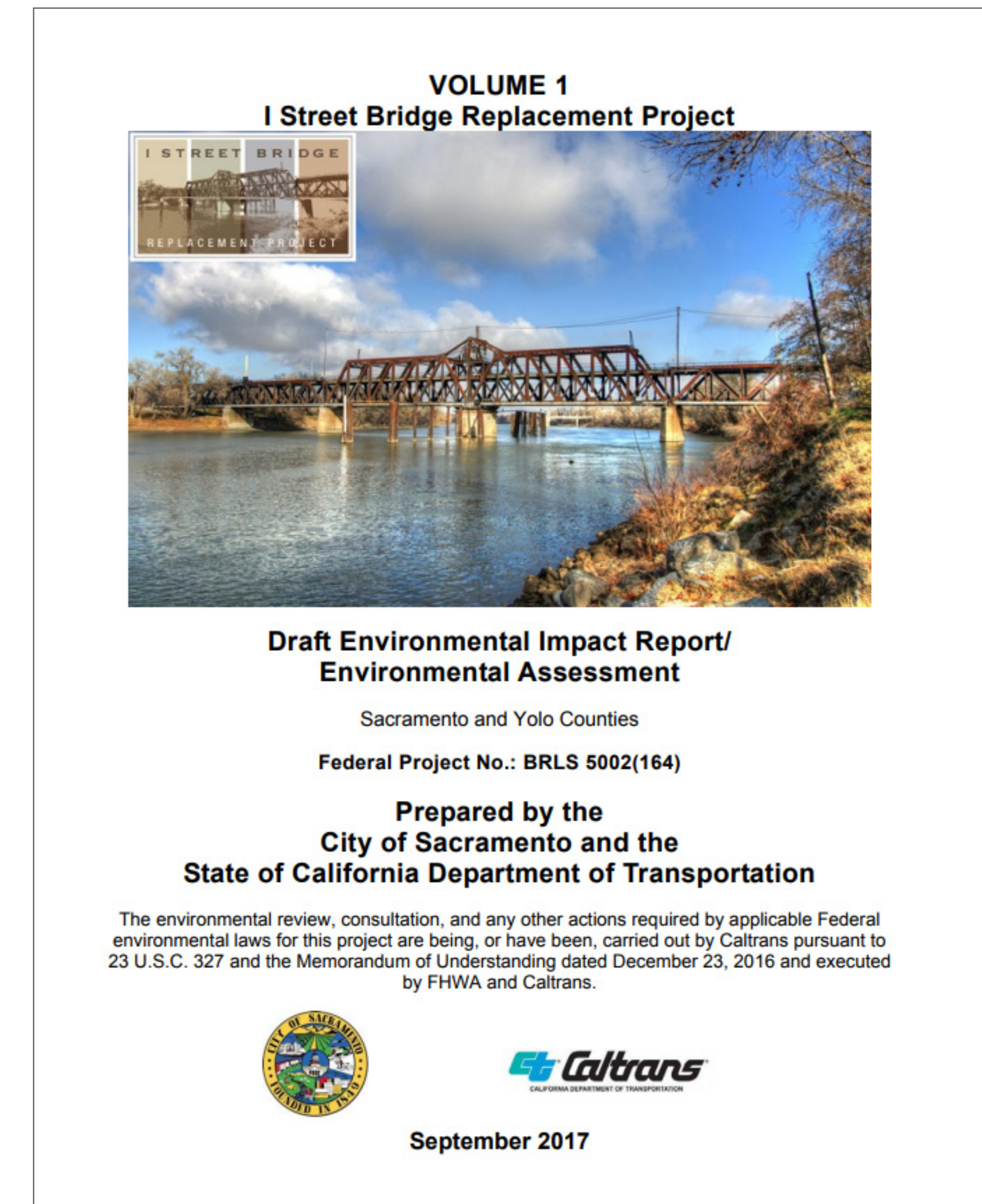


Draft Environmental Impact Report



Draft Environmental Impact Report / Environmental Assessment

- Public review and comment is an integral part of the environmental process in the California Environmental Quality Act (CEQA) and National Environmental Policy Act (NEPA).
- CEQA and NEPA documents identify a project's potential environmental impacts and feasible mitigation or alternatives to the project to avoid or reduce significant impacts.





Draft Environmental Impact Report / Environmental Assessment

Public Review Period: September 28 - November 12, 2017

- All comments on the I Street Bridge Replacement Project draft environmental document will be considered.
- Written comments received during the comment period will be included in the Final Environmental Impact Report/ Environmental Assessment.

**Comments must be
received by 4 p.m. on
November 12**



Bridge Aesthetics & Design Process

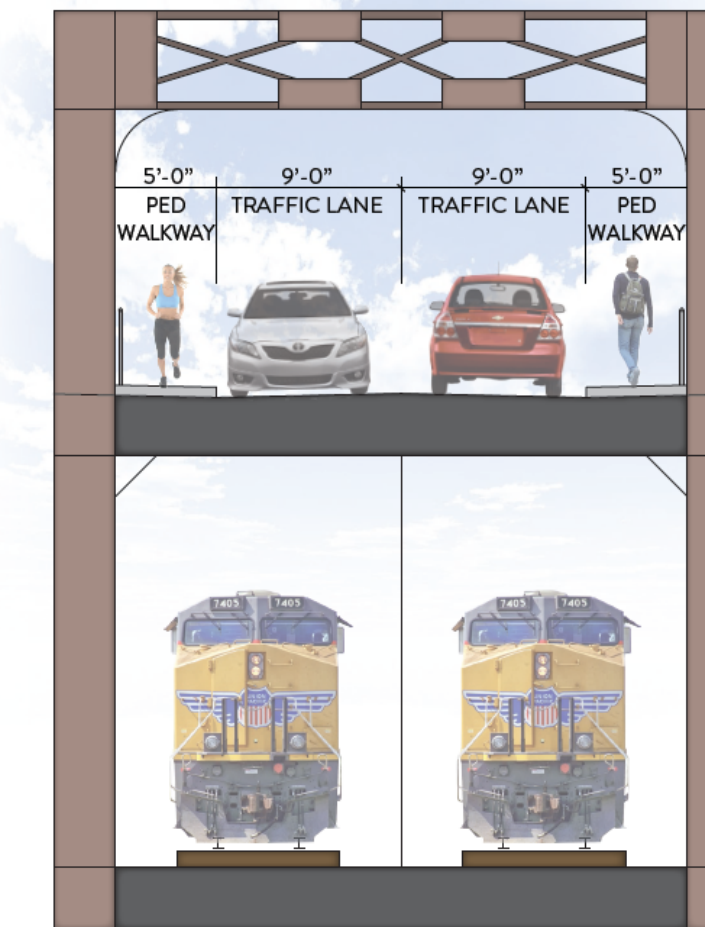


Bridge Aesthetics

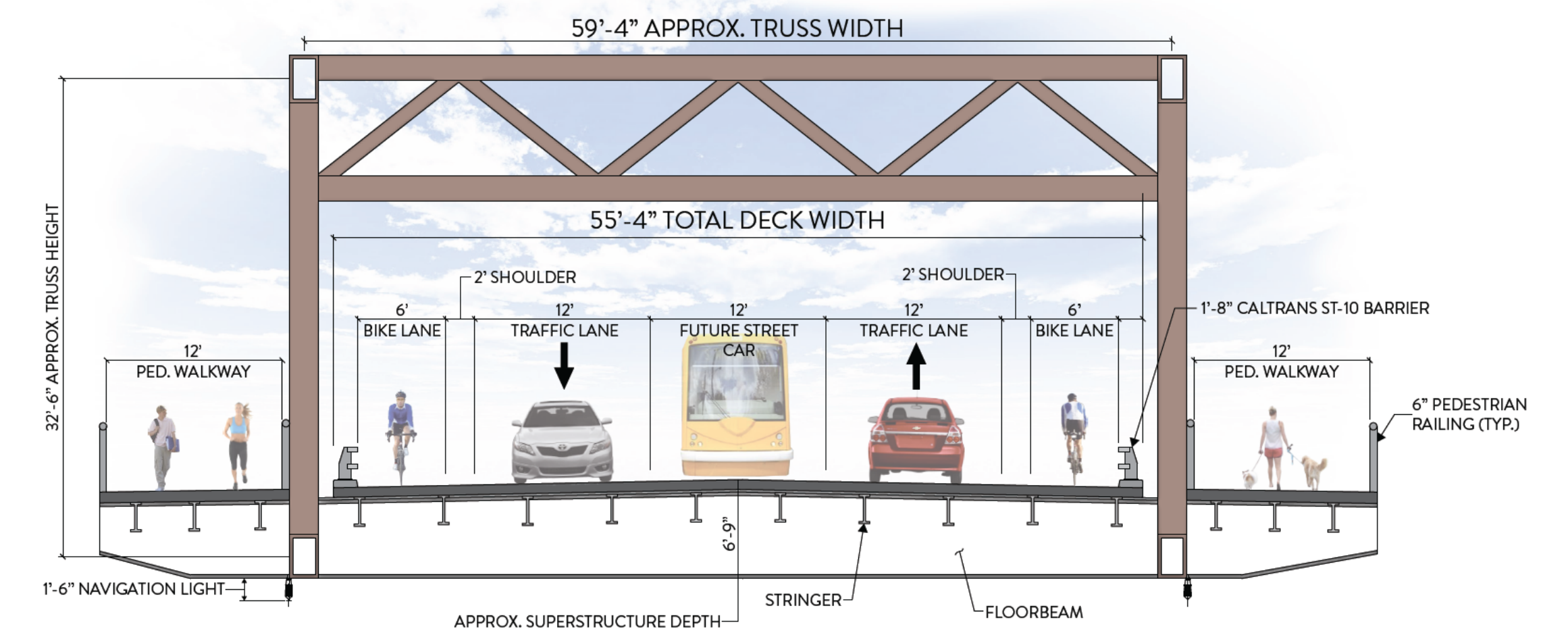
EMERGENCY RESPONSE



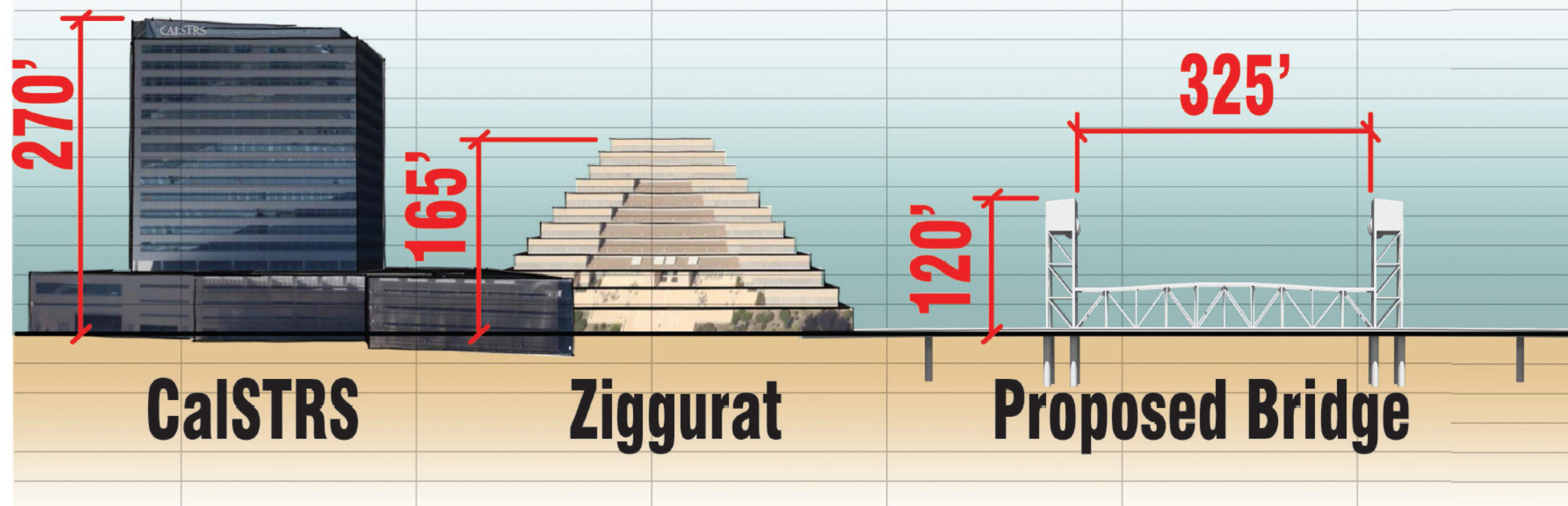
EXISTING BRIDGE CROSS SECTION



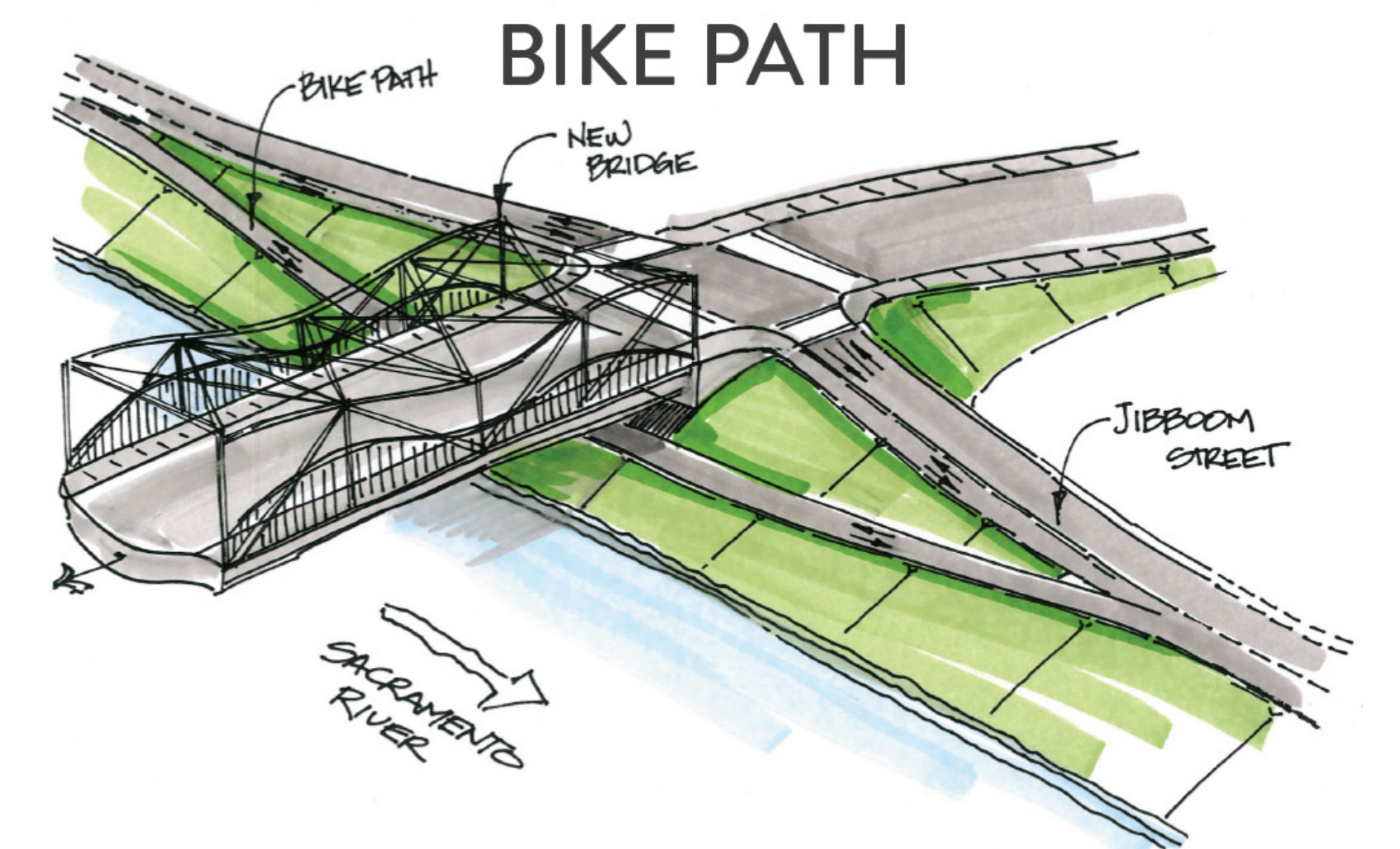
PROPOSED BRIDGE CROSS SECTION



VISUAL IMPACT



BIKE PATH

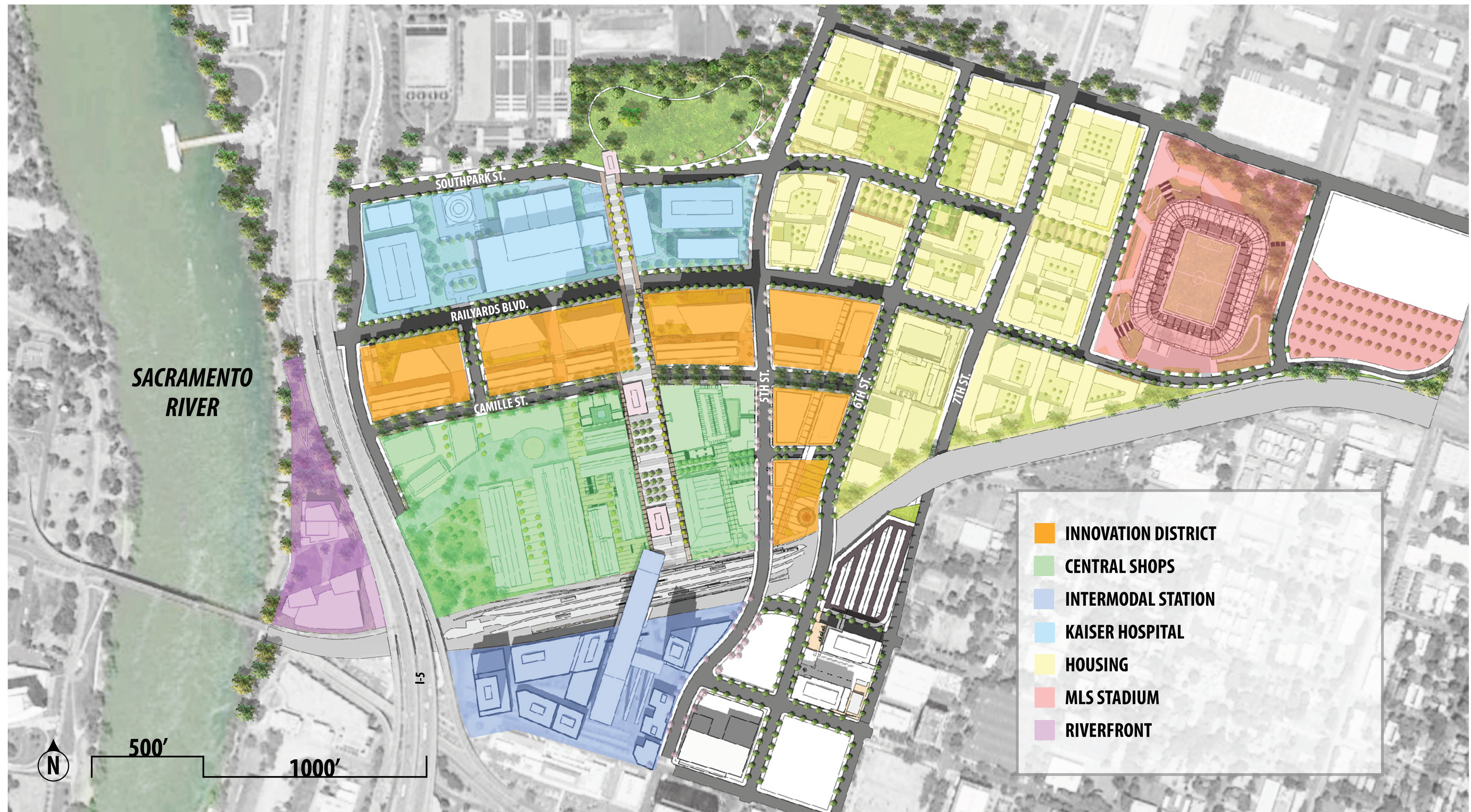




Connecting Communities



Sacramento Railyards





Sacramento Railyards





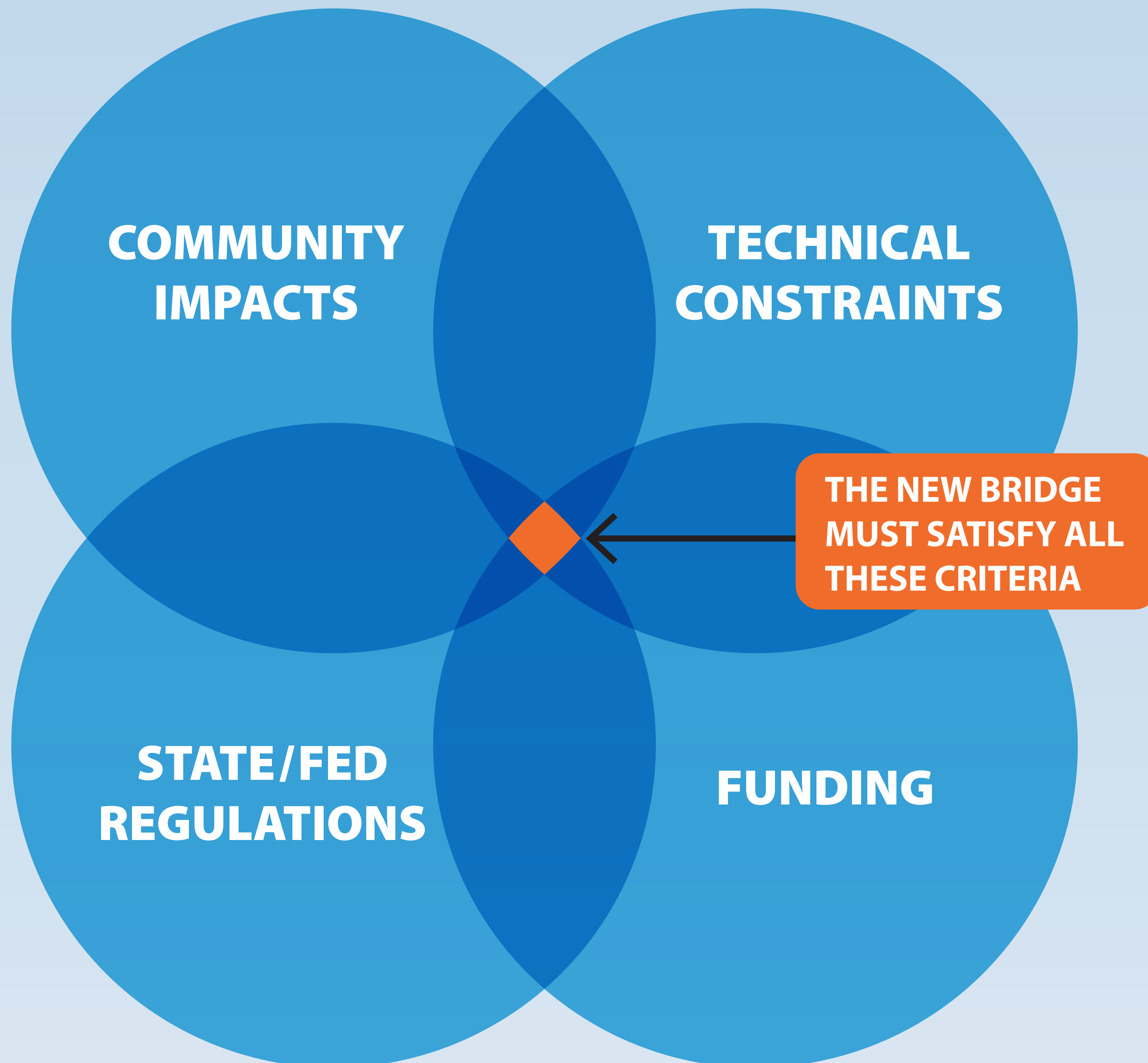
Sacramento Railyards





What will the new bridge look like?

Prior to designing the bridge aesthetics, the project team will first need to determine the bridge type, size, and shape to satisfy all of the following criteria:



COMMUNITY IMPACTS

The design of the bridge needs to be consistent with local policies and needs to minimize impacts.

TECHNICAL CONSTRAINTS

The moveable bridge options will need to accommodate required Coast Guard clearances, which could limit bridge choices.

STATE/FEDERAL REGULATIONS

The design needs to satisfy US Coast Guard, US Army Corps of Engineers, Central Valley Flood Protection Board, and other regulatory agencies.

FUNDING

The cost of aesthetics can be expensive. The project needs to meet the available budgets.

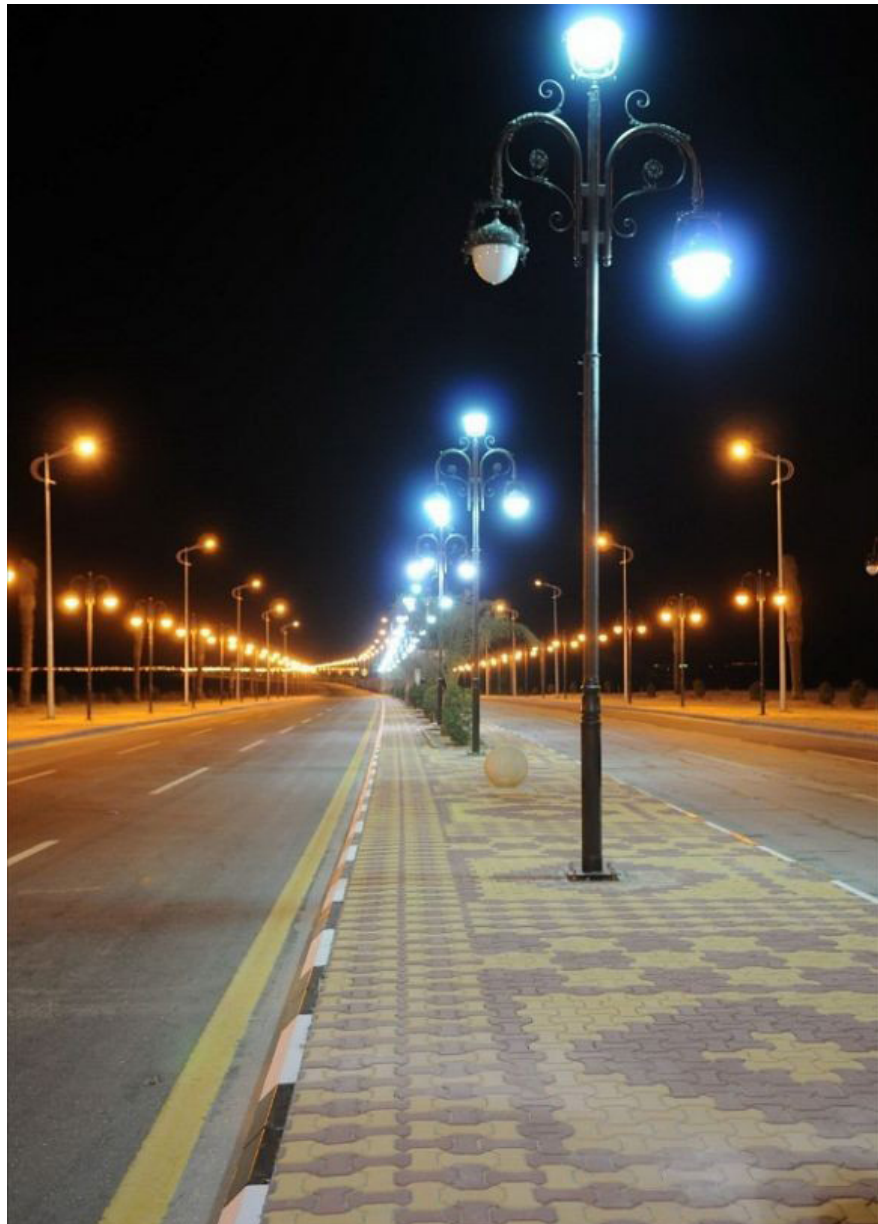
- The project team will first develop bridge options that meet these requirements.
- Once the bridge options have been developed, the process for developing what the bridge will look like will include extensive public outreach and expert involvement.



Bridge Elements



LIGHTING



LIGHTING AS ART



SCULPTURAL LIGHTING





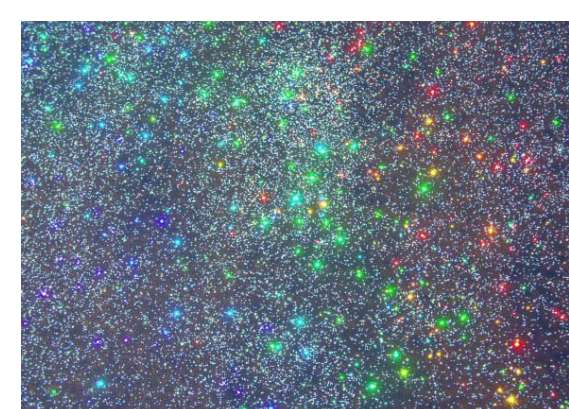
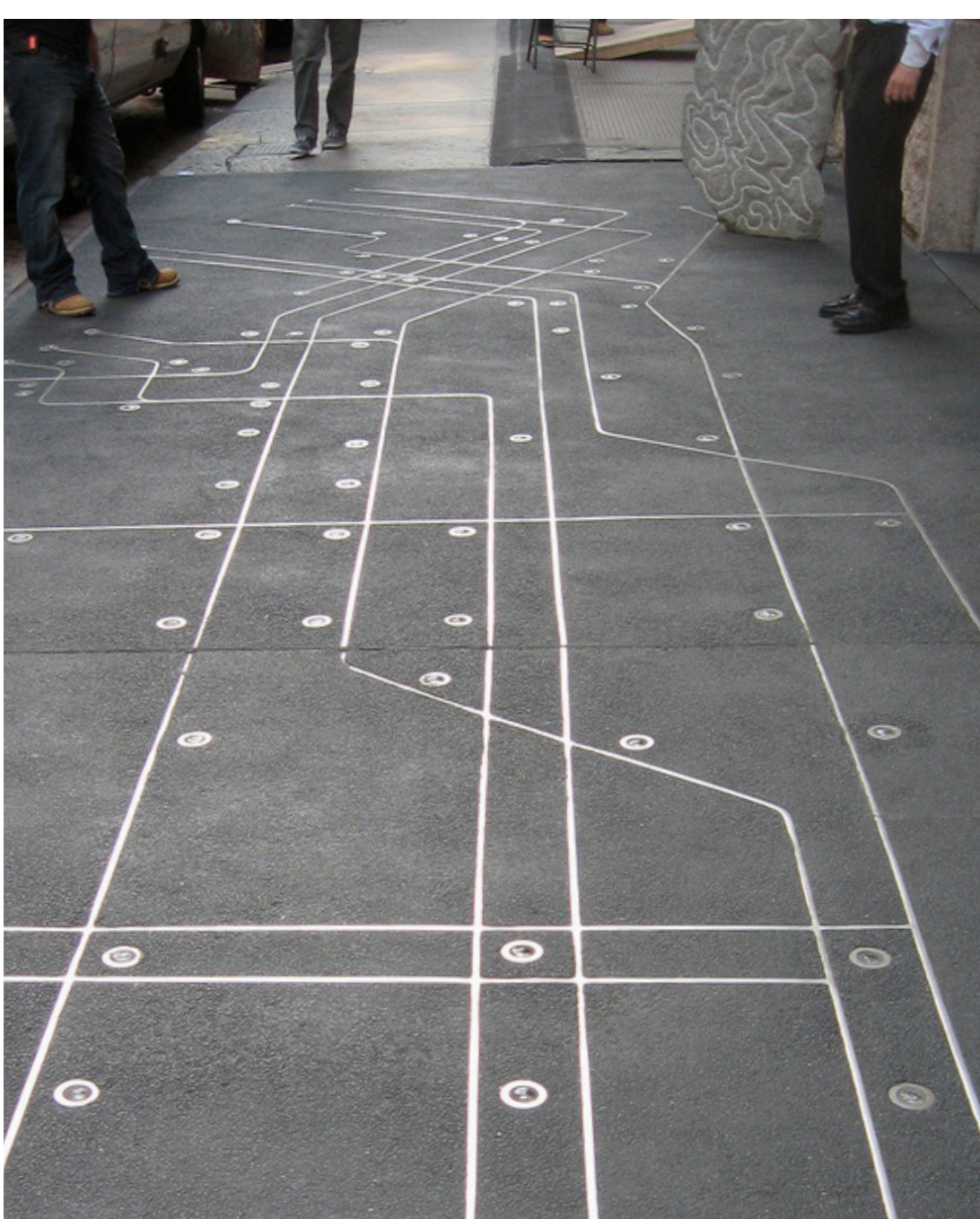
Bridge Elements



OVERLOOKS



RAILINGS



ENHANCED PAVING



Bridge Elements



WAYFINDING AND EDUCATION



ART



ART



Connecting Communities

Planned Developments in Sacramento and West Sacramento

