

Auburn Boulevard at Arcade Creek Bridge Replacement FAQ

1. When is the project taking place? What are the hours for construction?

The project will start in early May. Road closures will begin immediately after Memorial Day 2025. Bridge construction is expected to be completed by August 2025 (three months) while there is reduced traffic demand during the American River College summer break. Some construction is expected to continue after August 2025 under isolated lane closures rather than the full closure of Auburn Blvd. Longer workdays are planned during the full closure period since there will be no live traffic. Though night work is not currently anticipated, if it becomes necessary, the City will notify the public in advance. For current information on project hours and schedule, visit ArcadeCreekBridge.com.

2. How will this project benefit the community?

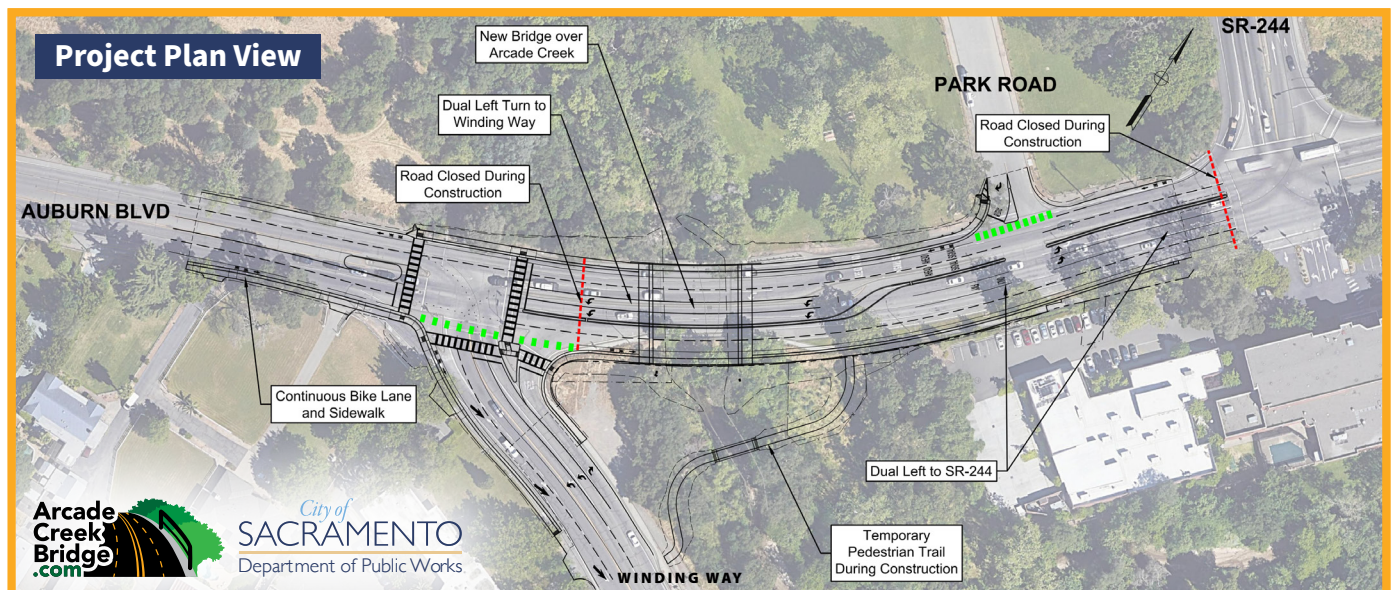
The project site is a traffic congested area in both directions of Auburn Blvd., including vehicles turning onto Winding Way, which is used by an average of 30,900 vehicles a day. When the new bridge is completed, a second turn lane will be added from westbound Auburn Blvd. to Winding Way to help relieve congestion that frequently occurs from traffic coming off I-80 and Business 80 at Auburn Blvd. The new bridge will also be a wider structure that includes room for bicycle lanes and sidewalks for pedestrians.

3. Why is this project happening?

The existing bridge over Arcade Creek is a reinforced concrete T-beam structure that was originally constructed in 1927, and then widened in 1965. The bridge has two spans with a total length of 70 feet. It carries two lanes of traffic in both the eastbound and westbound direction, with a single left turn pocket for westbound to southbound users. The current structure does not provide sidewalks or bike lanes that meet current standards. The City of Sacramento Department of Public Works is upgrading the Arcade Creek Bridge to enhance safety, improve functionality, reduce congestion, and provide standard sidewalks and bike lanes. Sacramento County funding will also allow for the addition of a left turn pocket to improve intersection operations. The new structure will meet modern standards set by the Federal Highway Administration and aligns with the Americans with Disabilities Act (ADA).

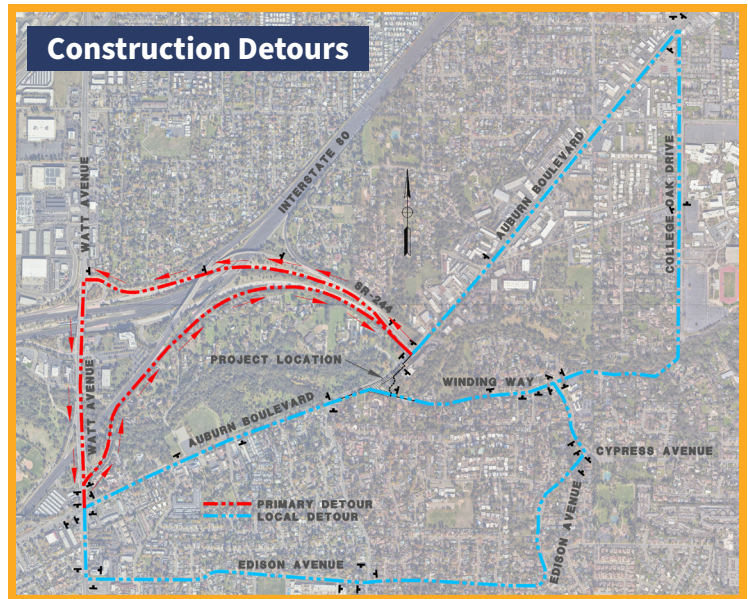
4. Which roads will be closed during the project?

The work will require the complete closure of Auburn Blvd. between Winding Way and the freeway ramps (see markings in red below) starting after Memorial Day and continuing through August 2025.



5. What are the alternate routes to avoid the project area?

During the full closure of Auburn Blvd., drivers will be routed around the area through alternate routes (see map at right). Most convenient access to I-80 and Business 80 (SR 244) will be at Madison Avenue or Watt Avenue. A detour map for local and commuter traffic is available on ArcadeCreekBridge.com.



6. Will this project require closure of the Winding Way intersection?

No, the Winding Way intersection will remain open during the road closure but will serve only east bound to south bound and north bound to west bound vehicular movements. Isolated closures may occur for specific operations like paving and water line tie ins. Those closures will be communicated to the public in advance, if needed.

7. Will bicyclists and pedestrians still be able to access this area?

Yes, there will be an on-site bicycle and pedestrian detour utilizing a temporary bridge across Arcade Creek while Auburn Blvd. is closed to vehicle traffic. See figure on previous page.

8. Will this project require the closure of adjacent freeway ramps?

No freeway ramps will be closed during construction. Eastbound Auburn Boulevard traffic would use the eastbound ramp from Watt Avenue on to Business 80 and then SR 244 to access Auburn Boulevard northeast of Arcade Creek. Westbound Auburn Boulevard traffic would use SR 244 and its ramp connection to the westbound off ramp from I-80 to Watt Avenue. The traffic signal phasing will be modified to improve traffic flow coming off the freeway onto eastbound Auburn.

9. How much does this project cost? Where does this funding come from?

This is a federally funded Bridge Replacement Project that is approximately \$15.3M. The City of Sacramento is the lead agency on the project. The County of Sacramento has partnered with the City to provide funding for an additional left turn lane on the new bridge which will improve traffic operations at the Winding Way intersection.

10. How can I stay informed about the upcoming construction?

Follow [@TheCityofSacramentoPublicWorks](https://www.facebook.com/TheCityofSacramentoPublicWorks) on Facebook for more information and updates on the Auburn Boulevard at Arcade Creek Bridge Replacement Project, as well as other City of Sacramento Public Works projects. To learn more about alternative routes and project updates, visit ArcadeCreekBridge.com.

11. Where do I submit questions about the project?

Questions can be sent by email to: admin@arcadecreekbridge.com. A project hotline is also available for anyone with questions or concerns related to the Arcade Creek Bridge Replacement Project. Direct your questions or concerns to: (800)533-9758.