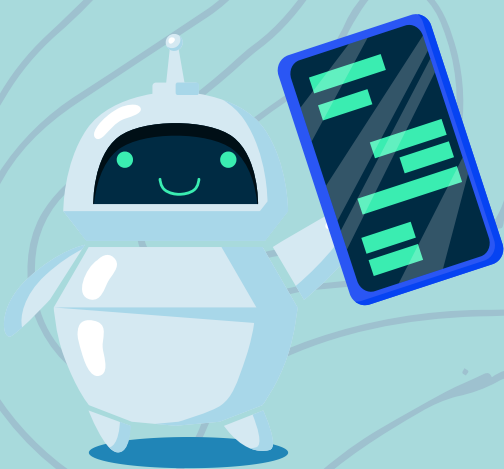


Generative AI Best Practices

Generative AI, (i.e. Chat GPT, Bard, etc.) can boost a public agency's efficiency, responsiveness and accessibility, but AI privacy and ethical guidelines are a must! To ensure your agency is prepared for the future of Generative AI, follow our best practices listed below.

Your organization's existing policies most-likely include guidance on how to protect PII. If not, consider updating the policy to include standards on information sensitivity.

1

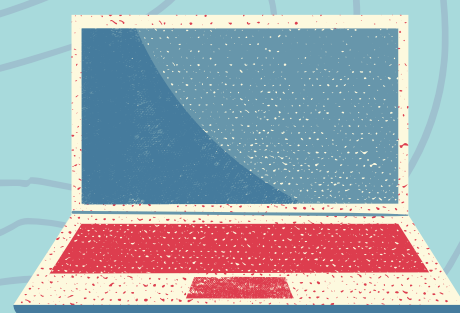


2

DO NOT share confidential information with Generative AI technology. You must assume everything you enter into Generative AI and its responses are publicly available.

Although Generative AI is a powerful tool, it is crucial to fact-check and verify the information generated. Use trusted sources and cross-reference information provided by Generative AI to ensure accuracy.

3



4

Generative AI can create content that infringes on copyrighted works and reproduce copyrighted characters, logos or designs without authorization. Please check and/or consult with legal experts!



Crypto says: "Remember, while Generative AI is a valuable tool, it should enhance our work, not replace it. It is our responsibility to exercise critical thinking and judgement alongside its usage."

Complimentary of MISAC's Cybersecurity Committee and is free for use.