

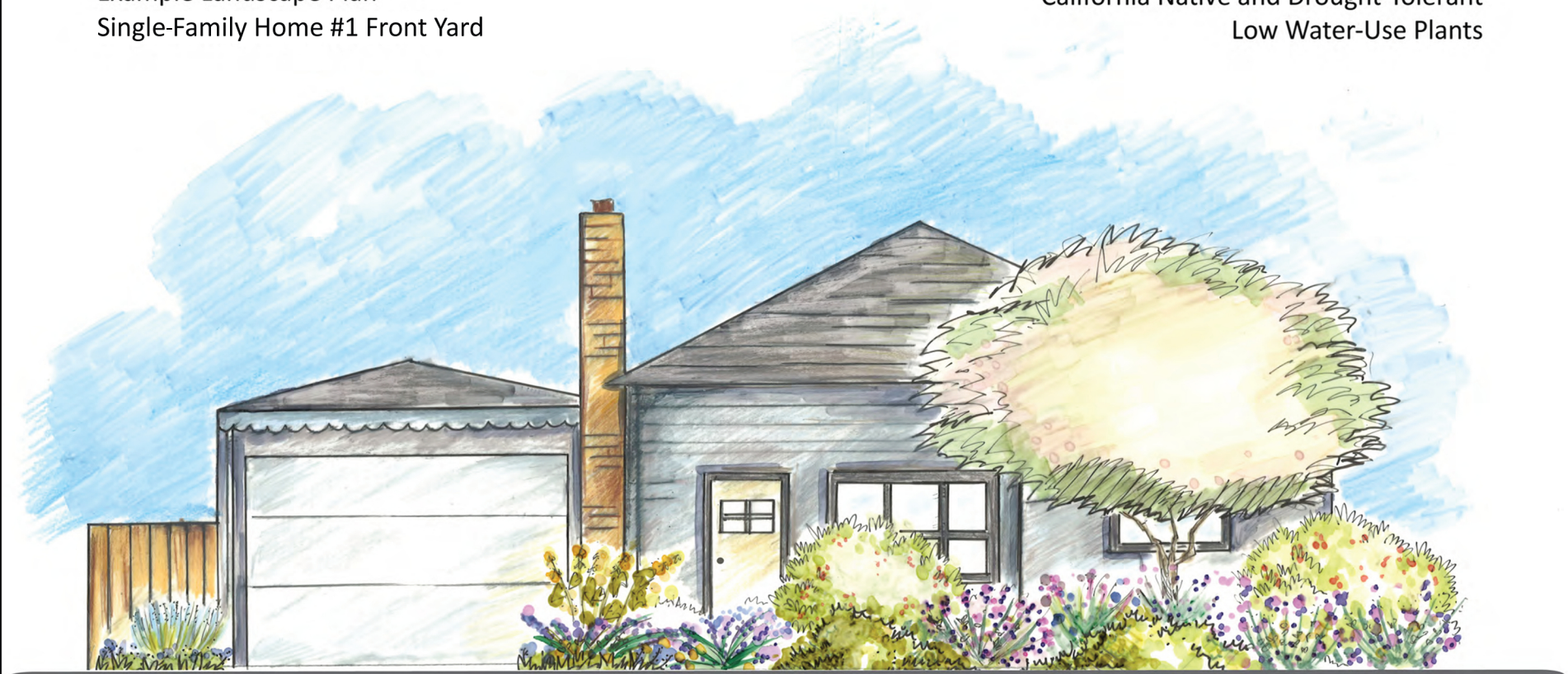
Developed & Supported by:



County of Sacramento Community Development Department

Example Landscape Plan
Single-Family Home #1 Front Yard

California Native and Drought-Tolerant
Low Water-Use Plants



Illustrated By Kathryn Waje



Developed & Supported by:
EcoLandscape
CALIFORNIA

SHEET DESCRIPTION:
Example Landscape Design
Single-Family Home #1 Front Yard
California Native & Drought-Tolerant
Low Water-Use Plants

PROJECT:
County of Sacramento
Community Development Department

REVISIONS:
None

DATE:
1/24/13

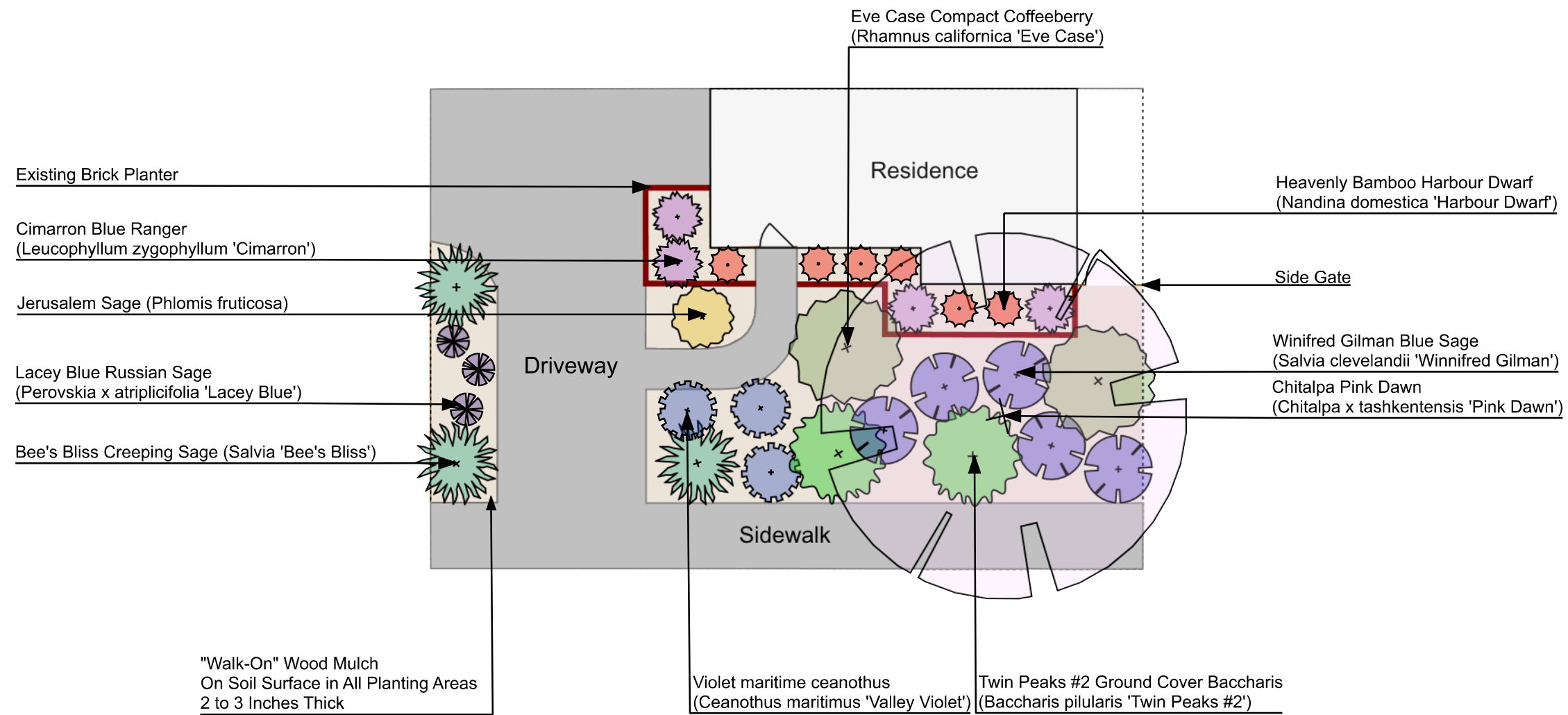
JOB NUMBER:
1

DRAWN BY:
CB

CHECKED BY:
CB

SCALE:
1/8" = 1' 0"

SHEET:
1 of 1



Paper Size: 11" x 17"



Single-Family Home #1 Front Yard
 California Native and Drought-Tolerant
 Low Water-Use Plants

Developed & Supported by:



Botanical Name	Common Name	Qty.	Size	Mature Size
<i>Baccharis pilularis</i> 'Twin Peaks #2'	Twin Peaks #2 Ground Cover Baccharis	2	#1	3' T / 8' W
<i>Ceanothus maritimus</i> 'Valley Violet'	Violet Maritime Ceanothus	3	#1	2' T / 4' W
Chitalpa X tashkentensis 'Pink Dawn'	Chitalpa Pink Dawn	1	#5	30' T / W
<i>Leucophyllum zygophyllum</i> 'Cimarron'	Cimarron Blue Ranger	4	#2	3' T / 3' W
<i>Nandina domestica</i> 'Harbour Dwarf'	Heavenly Bamboo Harbour Dwarf	6	#1	2-3' T / W
<i>Phlomis fruticosa</i>	Jerusalem Sage	1	#1	4' T / W
<i>Rhamnus californica</i> 'Eve Case'	Eve Case Compact Coffeeberry	2	#5	4-8 T / W
<i>Salvia</i> 'Bee's Bliss'	Bee's Bliss Creeping Sage	3	#1	1-2' T / 6-8' W
<i>Salvia clevelandii</i> 'Winnifred Gilman'	Winifred Gilman Blue Sage	5	#1	3-5' T / 4-5' W
<i>Perovskia x atriplicifolia</i> 'Lacey Blue'	Lacey Blue Russian Sage	3	#1	1-1.5' T / 2-3' W



Nandina domestica
 'Harbour Dwarf'
 Heavenly Bamboo Harbour Dwarf



Chitalpa X tashkentensis
 'Pink Dawn'
 Chitalpa Pink Dawn



Leucophyllum zygophyllum
 'Cimarron'
 Cimarron Blue Ranger



Salvia clevelandii 'Winnifred Gilman'
 Winifred Gilman Blue Sage

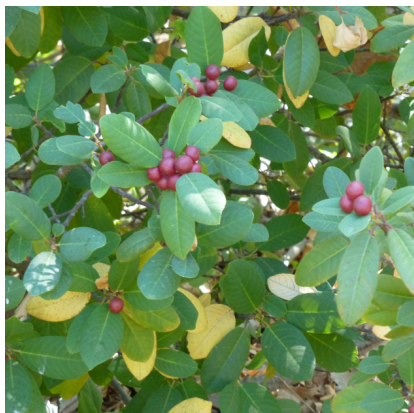


Salvia 'Bee's Bliss'
 Bee's Bliss Creeping Sage

Single-Family Home #1 Front Yard
California Native and Drought-Tolerant
Low Water-Use Plants



Perovskia x atriplicifolia 'Lacey Blue'
Lacey Blue Russian Sage



Rhamnus californica 'Eve Case'
Eve Case Compact Coffeeberry



Phlomis fruticosa
Jerusalem Sage



Baccharis pilularis 'Twin Peaks #2'
Twin Peaks #2 Ground Cover Baccharis



Ceanothus maritimus 'Valley Violet'
Violet Maritime Ceanothus

Developed & Supported by:



EcoLandscape
CALIFORNIA

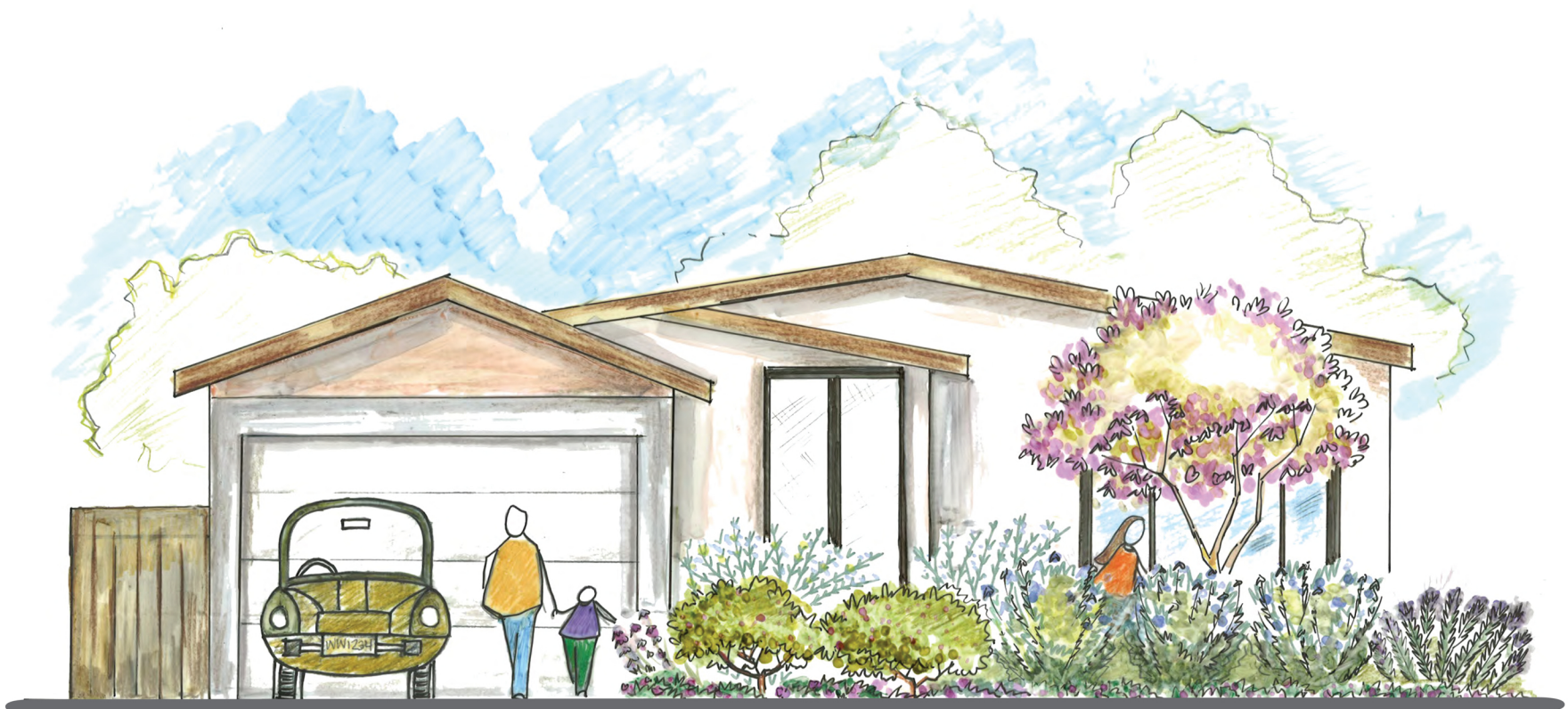


WATER
FORUM

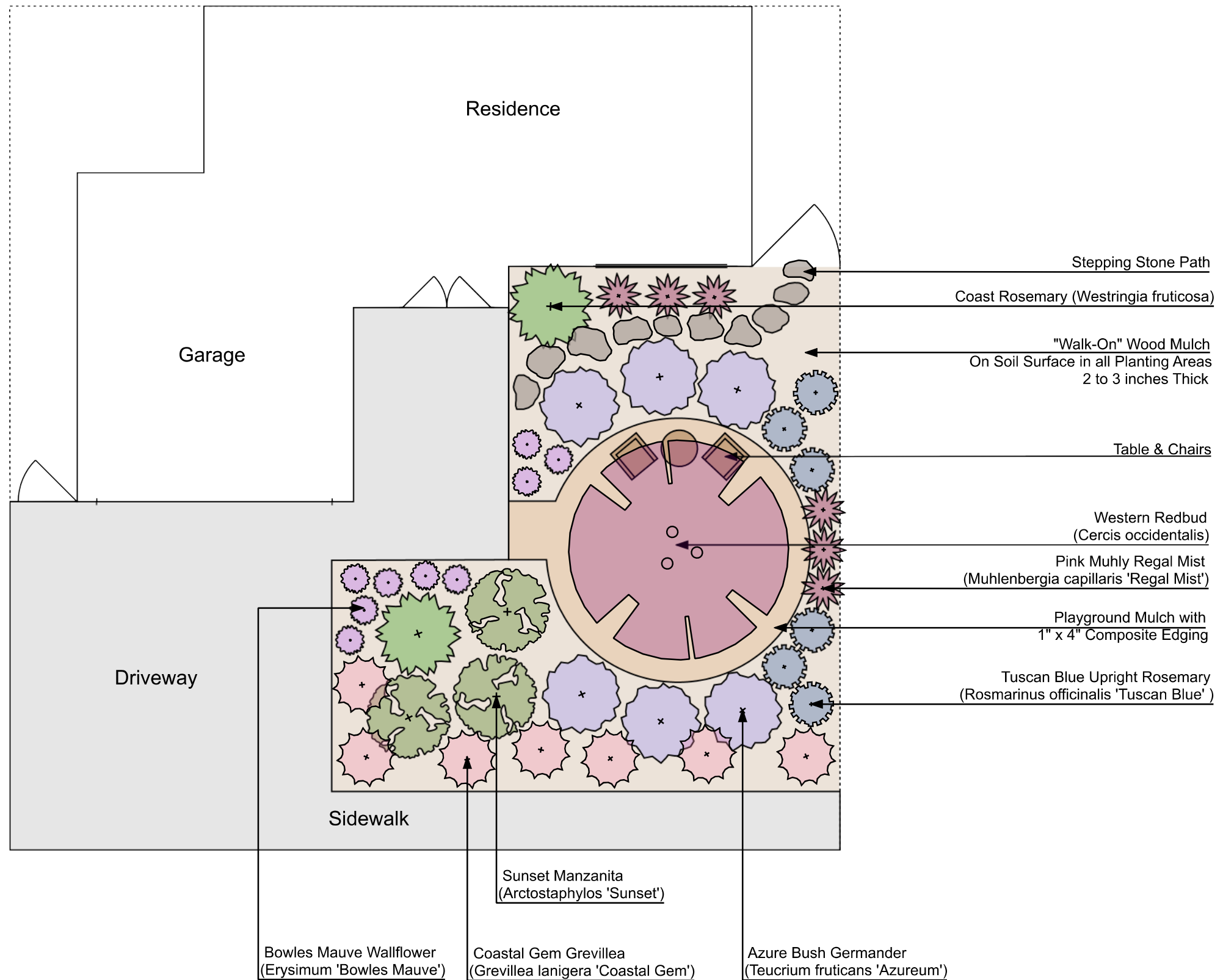
**County of Sacramento
Community Development Department**

Example Landscape Plan
Single Family Home #2 Front Yard

California Native and Drought-Tolerant
Low Water-Use Plants



Illustrated By Kathryn Waje



Paper Size: 11" x 17"



Developed & Supported by:
EcoLandscape
 CALIFORNIA

SHEET DESCRIPTION:
 Example Landscape Design
 Single-Family Home #2 Front Yard
 California Native & Drought Tolerant
 Low Water-Use Plants

PROJECT:
 County of Sacramento
 Community Development Department

REVISIONS:
 None

DATE:
 3/4/13

JOB NUMBER:
 1

DRAWN BY:
 CB

CHECKED BY:
 CB

SCALE:
 1/8" = 1' - 0"

SHEET:
 1 of 1

Single-Family Home #2 Front Yard
 California Native and Drought-Tolerant
 Low Water-Use Plants

Developed & Supported by:



Botanical Name	Common Name	Qty.	Size	Mature Size
<i>Arctostaphylos</i> 'Sunset'	Sunset Manzanita	3	#5	4-5' T / 4-6' W
<i>Cercis occidentalis</i>	Western Redbud	1	#5	10-18' T / W
<i>Erysimum</i> 'Bowles Mauve'	Bowles Mauve Wallflower	9	#1	18-24" T / 15-18" W
<i>Grevillea</i> 'Coastal Gem'	Coastal Gem Grevillea	7	#1	1' T / 4-5' W
<i>Muhlenbergia capillaris</i> 'Regal Mist'	Pink Muhly Regal Mist	6	#1	2-3' T / 3-4' W
<i>Rosmarinus officinalis</i> 'Tuscan Blue'	Tuscan Blue Upright Rosemary	6	#1	3-6' T / 2-4' W
<i>Teucrium fruticans</i> 'Azureum'	Azure Bush Germander	6	#1	4-6' T / W
<i>Westringia fruticosa</i>	Coast Rosemary	2	#1	4-6' T / 5-8' W



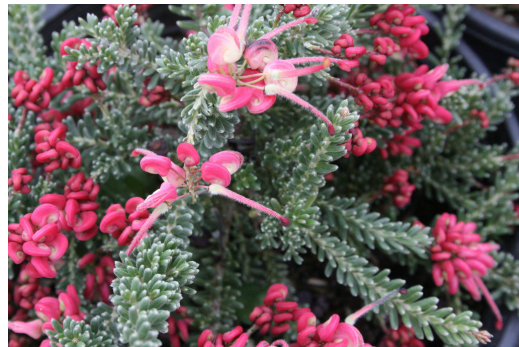
Arctostaphylos 'Sunset'
 Sunset Manzanita



Cercis occidentalis
 Western Redbud



Erysimum 'Bowles Mauve'
 Bowles Mauve Wallflower



Grevillea 'Coastal Gem'
 Coastal Gem Grevillea

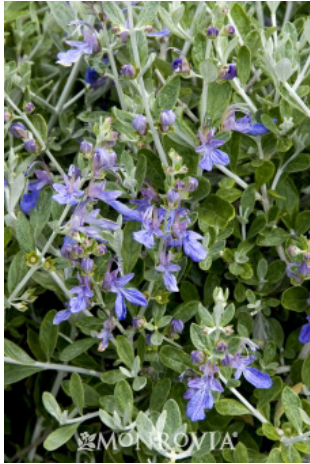


Muhlenbergia capillaris 'Regal Mist'
 Pink Muhly Regal Mist



Rosmarinus officinalis
 'Tuscan Blue'
 Tuscan Blue Upright
 Rosemary

Single-Family Home #2 Front Yard
California Native and Drought-Tolerant
Low Water-Use Plants



Teucrium fruticans 'Azureum'
Azure Bush Germander



Westringia fruticosa
Coast Rosemary

Developed & Supported by:



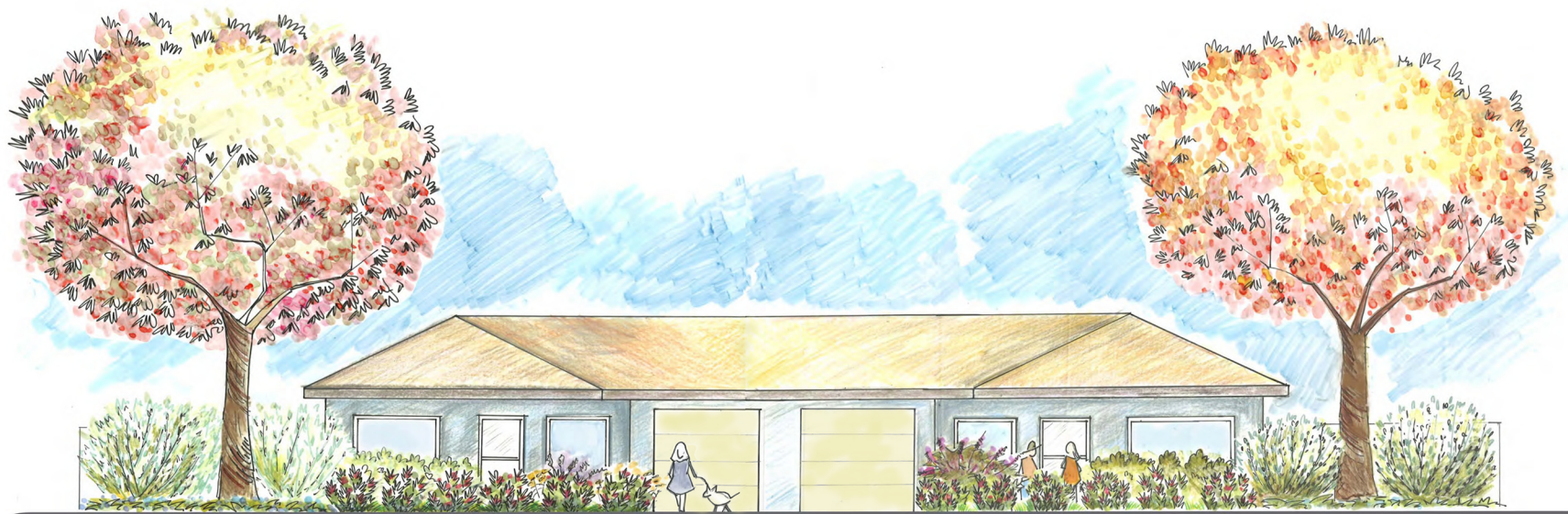
EcoLandscape
CALIFORNIA



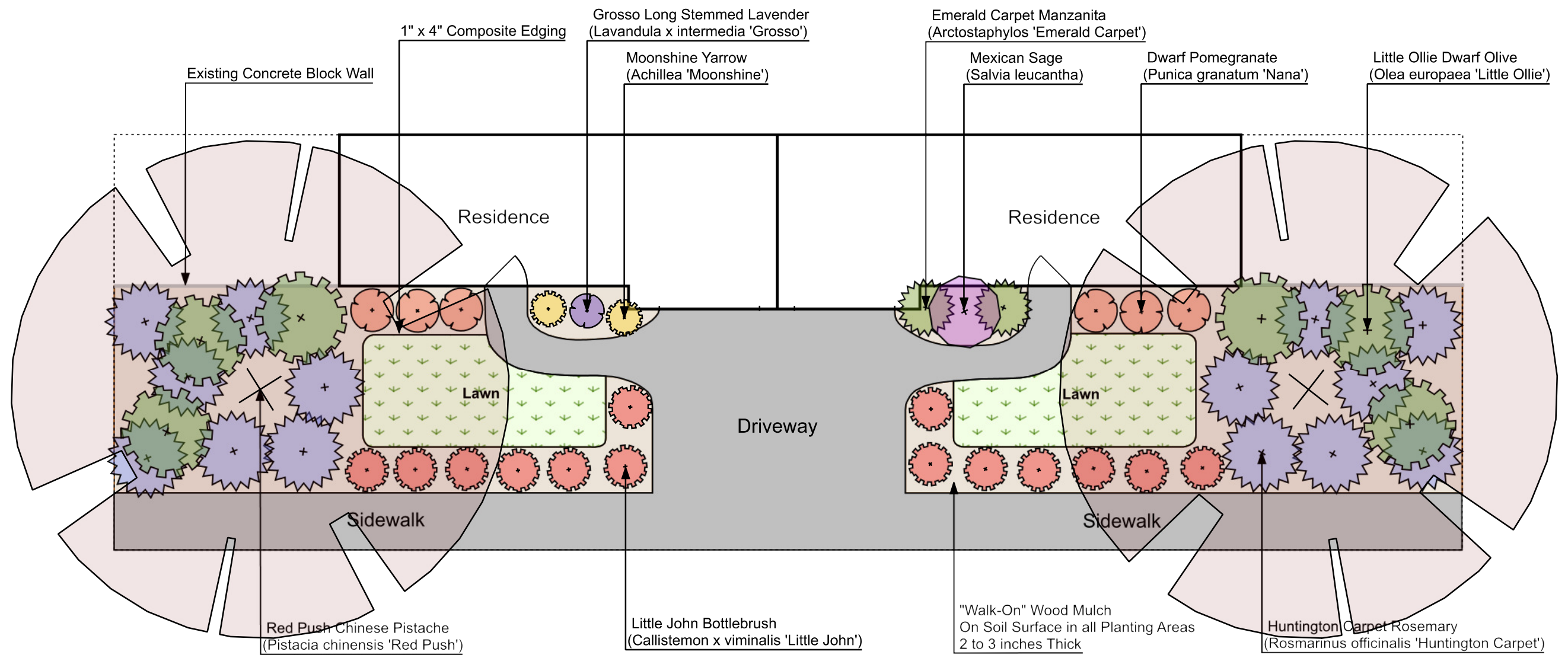
**County of Sacramento
Community Development Department**

Example Landscape Plan
Duplex Front Yard

California Native and Drought-Tolerant
Low Water-Use Plants



Illustrated By Kathryn Waje



Developed & Supported by:
EcoLandscape
 CALIFORNIA

SHEET DESCRIPTION:
 Example Landscape Design
 Duplex Front Yards
 California Native & Drought Tolerant
 Low Water-Use Plants

PROJECT:
 County of Sacramento
 Community Development Department

REVISIONS:
 None

DATE:
 3/4/13

JOB NUMBER:
 1

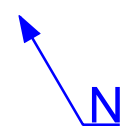
DRAWN BY:
 CB

CHECKED BY:
 CB

SCALE:
 1/8" = 1' 0"

SHEET:
 1 of 1

Paper Size: 11" x 17"



Duplex Front Yards
California Native and Drought-Tolerant
Low Water-Use Plants

Developed & Supported by:



Botanical Name	Common Name	Qty.	Size	Mature Size
<i>Achillea</i> 'Moonshine'	Moonshine Yarrow	2	#1	2' T / W
<i>Arctostaphylos</i> 'Emerald Carpet'	Emerald Carpet Manzanita	2	#1	18-24" T / 3-5' W
<i>Callistemon x viminalis</i> 'Little John'	Little John Bottlebrush	14	#1	3' T / W
<i>Lavandula x intermedia</i> 'Grosso'	Grosso Long Stemmed Lavender	1	#1	1-2' T / 2-3' W
<i>Olea europaea</i> 'Little Ollie'	Little Ollie Dwarf Olive	6	#5	6-8' T / W
<i>Pistacia chinensis</i> 'Red Push'	Red Push Chinese Pistache	2	#5	35-40' T / W
<i>Punica granatum</i> 'Nana'	Dwarf Pomegranate	6	#1	3' T / W
<i>Rosmarinus officinalis</i> 'Huntington Carpet'	Huntington Carpet Rosemary	14	#1	1.5' T / 6' W
<i>Salvia leucantha</i>	Mexican Sage	1	#1	3-4' T / 3-6' W
90/10 Tall Fescue Delta Bluegrass Co. or Mow Free Lawn Delta Bluegrass Co.	Traditional Lawn or Alternative to Traditional Lawn	Per sq. ft.		



Achillea 'Moonshine'
Moonshine Yarrow



Arctostaphylos 'Emerald Carpet'
Emerald Carpet Manzanita



Callistemon x viminalis 'Little John'
Little John Bottlebrush



Lavandula x intermedia 'Grosso'
Grosso Long Stemmed Lavender



Olea europaea 'Little Ollie'
Little Ollie Dwarf Olive



Pistacia chinensis 'Red Push'
Red Push Chinese Pistache

Duplex Front Yards
California Native and Drought-Tolerant
Low Water-Use Plants



Punica granatum 'Nana'
Dwarf Pomegranate



Rosmarinus officinalis
'Huntington Carpet'
Huntington Carpet Rosemary



Salvia leucantha
Mexican Sage



Mow Free Lawn Delta Bluegrass Co.
Alternative to Traditional Lawn