

Pubs Clubs and Bars

Jan 18th 2024



Winter Common Issues



- Tents and Canopies
- Heaters
- Decorations/Interior Finishes
- Lighting and Wiring
- Exiting
- Occupancy
- Station Night Club Fire



Tents And Canopies

- Tent vs Canopy –
 - CFC Ch. 2 Definitions
 - CANOPY. A structure or architectural projection of rigid construction over which a covering is attached that provides weather protection, identity or decoration, and may be structurally independent or supported by attachment to a building on one end and by not less than one stanchion on the outer end.
 - TENT. A structure, enclosure, umbrella structure or shelter, with or without sidewalls or drops, constructed of fabric or pliable material supported in any manner except by air or the contents it protects



Tents and Canopies

- **3103.2 Approval Required**
 - Tents and membrane structures having an area in excess of 400 square feet (37 m²) shall not be erected, operated or maintained for any purpose without first obtaining a permit and approval from the fire code official.
- Tents or canopies shall not impede any designed exiting from the building.



Tents and Canopies

- Smoking is prohibited in tents, canopies, and temporary membrane structures and in adjacent areas where combustible materials are stored or used. “No Smoking” signs shall be conspicuously posted.
- Fireworks, open flames and devices capable of igniting combustible material shall not be used adjacent to temporary membrane structures, tents or canopies unless otherwise approved. (this includes generators)



Heaters

- These heaters are prohibited for use indoors (this means tents and canopies)
- Cannot be located within 5 feet of anything combustible
- Cannot be located within 5 feet of an exit or a path to an exit
- Protective guards shall remain in place at all times
- Secured from falling



Decorations/Interior Finishes

- All drapes, hangings, curtains, drops, and all other decorative material, including Christmas trees, that would tend to increase the fire and panic hazard shall be made from a nonflammable material, or shall be treated and maintained in a flame-retardant approved by the State Fire Marshal.
- Yes, every decoration even holiday ones you put up needs to be flame treated or made from a nonflammable material.



WARNING!
KEEP ALL FLAME AND HEAT SOURCES AWAY FROM THE FABRIC OF THIS PRODUCT

This item is made with flame resistant fabric that meets CPAI-84 Sec. 6/ULCS109, NFPA 701 fire standard specifications. **IT IS NOT FIRE PROOF** The fabric will burn if left in continuous contact with any flame. The application of any foreign substances to this fabric may render the flame retardant properties ineffective.

A circular seal with a double border. The outer border contains the text "REGISTERED" at the top and "FLAME RETARDANT" at the bottom. The inner border contains "STATE OF CALIFORNIA" at the top and "STATE FIRE MARSHAL" at the bottom. In the center is a Maltese cross with a fire hydrant in the middle. Below the seal is a banner with the text "F-96601".

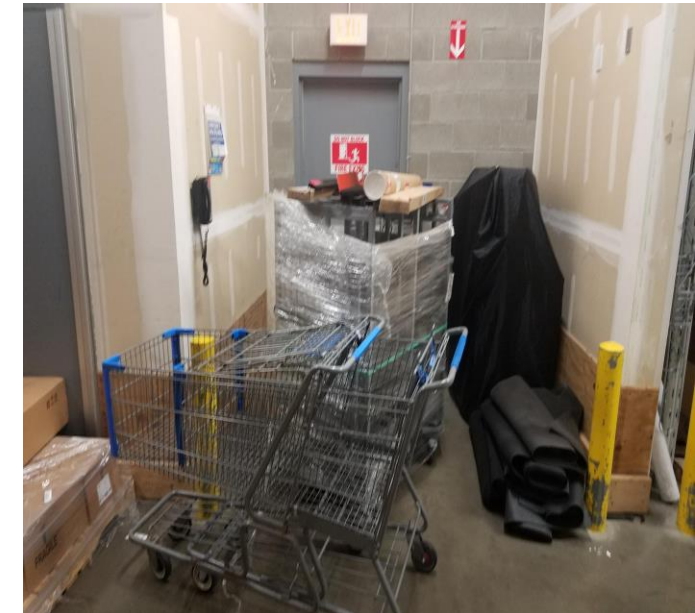
Lighting & Wiring

- Extension cords are allowed as temporary wiring only.
- Christmas Lights shall be inspected prior to use, for fraying, damage or broken bulbs.
- DO NOT hang lights, Decorations or cables from sprinkler piping or heads



Exiting

- Means of egress doors shall be maintained in such a manner as to be distinguishable from the adjacent construction and finishes such that the doors are easily recognizable as doors. Furnishings, decorations or other objects shall not be placed so as to obstruct exits, access thereto, egress therefrom, or visibility thereof.
- Hangings and draperies shall not be placed over exit doors or otherwise be located to conceal or obstruct an exit. Mirrors shall not be placed on exit doors.
- Manually operated flush bolts or surface bolts are not permitted.
- The unlatching of any door or leaf shall not require more than one operation.
- **In short, you should be able to get out in the event of an emergency!!**



Occupancy

- Approved occupancy load is based on the designed and approved plans for the space.
- Maintaining an accurate count at all times is required.
- Track occupants in and out to maintain a live count
- Recommend performing a “live count” every 30 – 60 mins when near max occupancy.



Station Nightclub Fire



Just Kidding.
Not Today!



Questions?



Contacts

- Feedback – Please let us know if there are topics you would like us to cover before the next PCB.
- Jessica Wong – jwong@sfd.cityofsacramento.org – (916) 808-1625
- Andrew Hazen – ahazen@sfd.cityofsacramento.org – (916) 808-0460
- Elizabeth McDowell – emcdowell@sfd.cityofsacramento.org – (916) 808-1656