



YOUTH, PARKS, RECREATION, AND OPEN SPACE

The residents of the city of Sacramento enjoy access to an extensive parks and recreation system that includes regional, communitywide, and neighborhood facilities. Throughout the community, Sacramento's parks serve as neighborhood anchors and valuable gathering places. Together with community centers, neighborhood gardens, schools, and libraries, they provide important opportunities for enhancing public health, community bonds, and quality of life. As Sacramento continues to grow, it will be increasingly important to ensure access for residents of all neighborhoods to a full range of recreational facilities and services that strengthen neighborhoods, empower youth to fulfill their potential, and support the needs of our diverse community.

The Youth, Parks, Recreation, and Open Space Element outlines a collaborative framework to guide decision-making and investment in parks, recreation programs, youth services, and natural open space areas that contribute to a sustainable and equitable city. Related strategies for promoting art, culture, and entertainment are included in the Land Use and Placemaking Element, together with strategies to guide the design of public spaces. Related strategies for supporting urban agriculture efforts in the city can be found in the Environmental Justice Element. Related strategies for expansion of the urban forest and preservation of riparian open space are included in the Environmental Resources and Constraints Element, while off-street shared-use paths are addressed in the Mobility Element.

Parks and Open Space

PARKS AND OPEN SPACE SYSTEM

The General Plan provides an overarching framework for the provision of parks, recreation, and open space facilities in the community. The Parks Plan acts as Sacramento's primary implementing tool for parks planning, bridging the City's General Plan and Capital Improvement Plan. The City of Sacramento strives to maintain a goal of 8.50 acres per thousand residents of neighborhood and community parks, regional parks, parkways and open space. With plans to add over 648 acres to the existing 4,330 acres of public parkland, the service level would be 7.64 acres of park land per thousand residents in 2040. The City Code requires that new residential developments either dedicate land for new park facilities or pay an in-lieu fee that can be used for acquisition of new parkland. Additionally, new development is subject to a Park Development Impact Fee (PIF), which can be used to finance the development of new or existing neighborhood and community parks within the service area of the development's project site and regional parks and citywide facilities. The PIF funds 5.0 acres of park land per thousand residents within the majority of the city, comprised of 3.5 acres of neighborhood and community parks and 1.5 acres of citywide parks and open spaces. Within the Central City, the PIF funds 3.25 acres of park and open space per thousand residents, comprised of 1.75 acres of neighborhood and community parks and 1.5 acres of citywide parks and open spaces. However, in order to maintain the 8.50 acres per thousand residents level of service for all parkland, the City will need to seek additional sources of funding for acquisition and development of parkland.



ACCESS TO PARKS

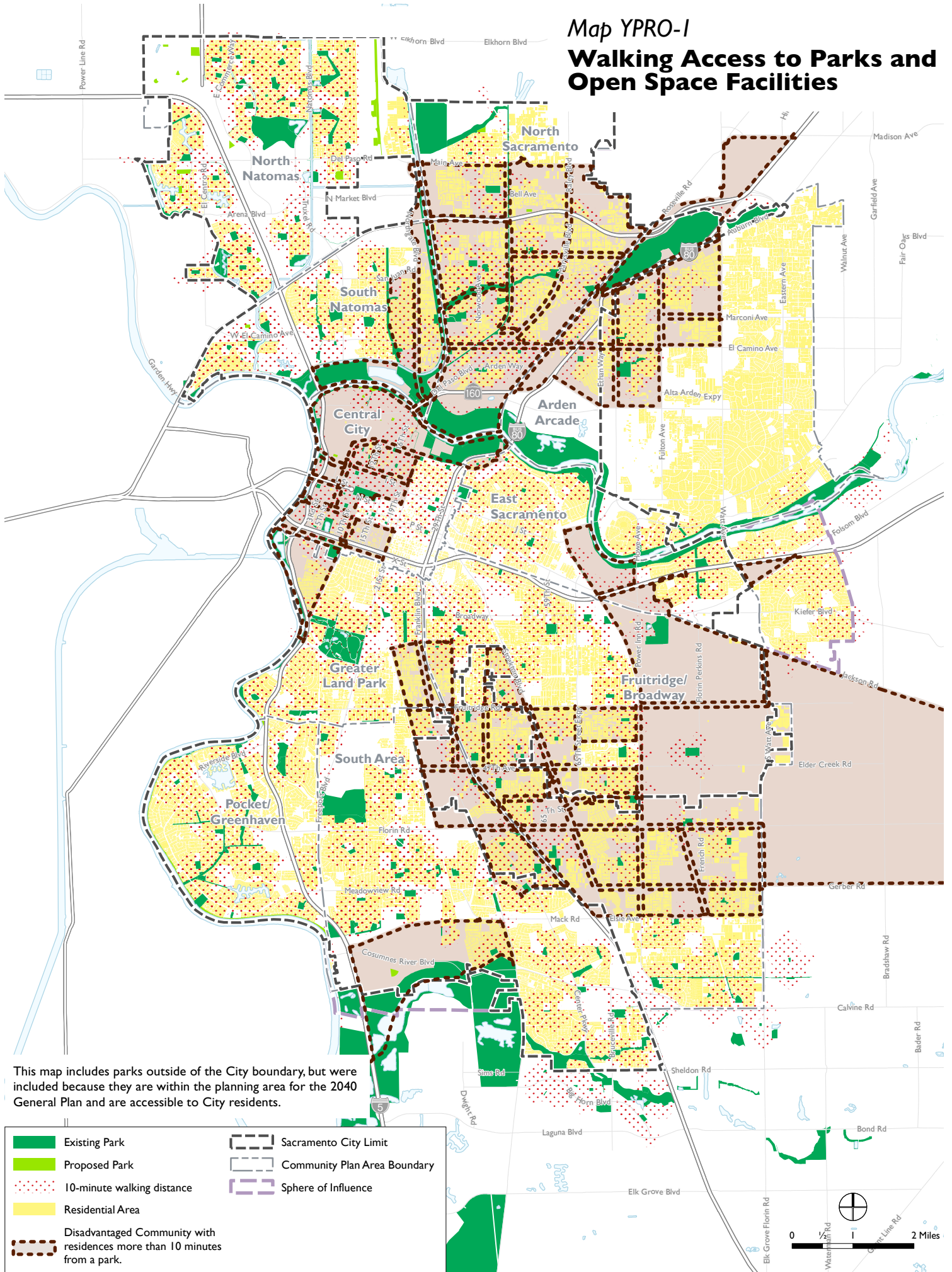
While the amount of parkland is an essential consideration in planning for parks and recreational facilities, the quality and accessibility of these spaces is equally important. A city should have parks with a distribution and form that allow the facilities to serve as a point of focus for residential neighborhoods, and be easily accessible for children, teenagers, families, people of various abilities, and older adults from their homes whether they choose to walk, ride, roll or take transit. As shown on **Map YPRO-1**, most residential areas of the city have a park or open space facility within a half-mile or 10-minute walk from home; however, there are some neighborhoods where residents cannot walk to a park easily, either because there are no parks close by or because there is a barrier in the way, such as a fence, road, waterway, or railway tracks.



The Sojourner Truth Community Garden, colocated at Sojourner Truth Park, provides healthy fresh produce to park users.

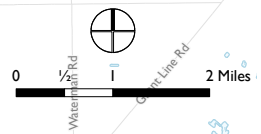
Map YPRO-1

Walking Access to Parks and Open Space Facilities



This map includes parks outside of the City boundary, but were included because they are within the planning area for the 2040 General Plan and are accessible to City residents.

	Existing Park		Sacramento City Limit
	Proposed Park		Community Plan Area Boundary
	10-minute walking distance		Sphere of Influence
	Residential Area		
	Disadvantaged Community with residences more than 10 minutes from a park.		



MAINTENANCE AND ADMINISTRATION

Parks maintenance and operations are funded through a combination of mechanisms, including an annual parcel tax on properties located within the Neighborhood Parks Maintenance Community Facilities District (CFD), a Park Impact Fee (PIF) applied to new residential and non-residential development, and voter-approved Measure U funds. In the provision of parks and recreational facilities, having a range of strategies can help deliver maintenance and cost savings to optimize the use of municipal resources, such as co-locating park and recreational facilities with other public and institutional uses; encouraging volunteer initiatives and sponsorship opportunities; pursuing public-private partnerships; maintenance agreements; and incentivizing new developments to provide publicly-accessible facilities.

The policies in this section seek to increase access to parks and open space throughout the community, with a priority on disadvantaged communities and areas with less access. Recognizing that park accessibility is not just a question of physical connections, policies in this section also focus on design, programming, maintenance, funding, and community involvement to activate and encourage use of parks.



GOAL AND POLICIES

YPRO-1

An integrated system of parks, open space areas, shared-use paths, and recreational facilities that are welcoming, well-maintained, safe, and accessible to all the diverse communities of Sacramento.

Parks and Open Space System

YPRO-1.1 Range of Experiences. The City shall provide a range of parks and recreational facilities and strive to ensure an equitable distribution of high-quality facilities throughout Sacramento.

YPRO-1.2 Youth, Parks, & Community Enrichment (YPCE) Parks Plan. The City shall refer to the YPCE Department's Parks Plan as the primary guide for locating and planning park improvements. YPCE will update the Parks Plan periodically to ensure it reflects projected community needs for all Sacramento residents.

YPRO-1.3 Parkland Service Standard. The City shall evaluate, as needed, the equitable increase of public park acreage to serve the needs of the current and future residents with high-quality facilities. The City shall continue to strive to achieve a parkland service standard of 8.5 acres of parkland per 1,000 residents, which includes neighborhood parks, community parks, regional parks, open space, and parkways.

YPRO-1.4 Parkland Dedication Requirements. The City shall continue to require that new residential development projects contribute toward the provision of adequate parks and recreational facilities to serve the new residents, either through the dedication of parkland, the construction of public and/or private recreation facilities, or the payment of parkland in-lieu fees, consistent with the Quimby Ordinance. To achieve the level of service for all parkland in all areas of the city, the City shall seek other funding resources to prioritize park needs in park deficit areas.

YPRO-1.5 Incentivizing Onsite Public Facilities. The City shall continue to provide Park Impact Fee (PIF) credit for development projects that provide publicly accessible parks, plazas, and parkways onsite that promote active or passive recreational opportunities and serve as neighborhood gathering points.

YPRO-1.6 Underutilized Land. As feasible, the City shall acquire, lease, or otherwise obtain rights to the use of underutilized vacant parcels for park or open space, focusing efforts first in park deficient communities.

YPRO-1.7 Co-Located Joint-Use Facilities. The City shall continue to facilitate the development of new parks or expansion of existing parks and recreational facilities by co-locating with and joint use of new or existing public and institutional facilities (e.g., schools, libraries, cultural facilities, and stormwater detention basins) in order to efficiently provide for community needs and offset operations and maintenance costs, prioritizing disadvantaged communities with an existing deficit of park or recreation facilities.

YPRO-1.8 Non-Conventional Park Solutions. In densely built out urban areas of the city where the provision of large park spaces is not feasible, the City shall explore creative solutions to provide neighborhood park and recreation facilities that serve the needs of local residents and employees. Such solutions may include the following:

- Publicly accessible, privately-owned open spaces and plazas;
- Rooftop play courts and gardens;
- Freeway underpass, utility corridor, and wide landscape medians;
- Conversion of rails to rails with trails;
- Pocket parks and pedestrian areas in the public right-of-way; and
- The provision of neighborhood and community-serving recreational facilities in regional parks.

YPRO-1.9 Timing of Services. The City shall monitor the pace and location of new development through the development review process and long-range planning efforts to strive to ensure that development of parks, recreation programming, and community-serving facilities and services keeps pace with growth.

Facility Access, Programming, and Safety

YPRO-1.10 Parkland Access Standard. In residential areas that do not have an accessible park or recreational open space within a 10-minute walk, the City shall evaluate the equitable increase of public park acreage, prioritizing communities with an existing deficit of high-quality facilities.

YPRO-1.11 Enhancing Access to Parks. The City shall pursue strategies that increase community access to parks and recreational facilities, including the following:

- Expanding joint-use agreements with schools and educational institutions;
- Removing of physical barriers to access (e.g., fences); and
- Providing a choice of legible and navigable routes to and from park areas through the installation of new or improved multi-use shared paths, wayfinding signage, and coordination with public transit.



YPRO-1.12 Parks Programming. The City shall continue to create high-quality, equitable programming that encourages the use of the park facilities by a variety of users, including older adults, youth, and people with disabilities throughout the day and evenings. Programming should include the following:

- Organized sports,
- Fitness,
- Youth leadership and workforce development,
- Volunteer activities, and
- Arts and cultural activities catering to the interests of the community that the park facilities serve.

Opportunities should be taken to incorporate local Native American heritage and culture.

YPRO-1.13 Park Safety. The City shall continue to use Crime Prevention Through Environmental Design (CPTED) landscaping and lighting, and efforts that support the Park Ranger program, to ensure that parks and open spaces are designed and maintained with safety as a priority without compromising accessible and inclusionary design.

YPRO-1.14 Collaborative Efforts. The City shall implement community-based crime prevention strategies in coordination with the City's Park Ranger program, neighborhood groups, local residents, and Property and Business Improvement Districts (PBIDs), concurrent with the City's Public Safety Services resolution to help improve safety and encourage positive activation of parks and facilities.

YPRO-1.15 Path Connections. The City shall maintain existing and pursue new connections to local and regional shared-use paths, especially when connecting to public parkland.

YPRO-1.16 River Parkway. The City shall collaborate with the Park Ranger program, the Sacramento County Department of Regional Parks and other agencies and organizations to secure funding to increase ranger patrols and maintain and enhance the American River and Sacramento River parkways and multi-use shared path corridors.

YPRO-1.17 Waterway Recreation and Access. The City shall work with regional partners, State agencies, non-profit and community groups, private landowners, and land developers to manage, preserve, improve, and enhance use and access to the Sacramento and American River Parkways, urban waterways and riparian corridors to increase public access for active and passive recreation and habitat values.

Design, Amenities, and Programming

YPRO-1.18 Integrated Parks and Recreation System. The City shall continue to provide an integrated system of parks, open space areas, and recreational facilities that are safe, connect diverse communities, acknowledge neighborhood context, protect and provide access to nature, integrate with adjacent developments, and make efficient use of land and open space.

YPRO-1.19 Sustainable Design. The City shall design and construct parks, public spaces, and recreational facilities for flexible use, energy/water efficiency, reduced greenhouse gas emissions and air pollution, adaptability for long-term use, and ease and cost of maintenance.

YPRO-1.20 Climate-Resilient Design. The City shall ensure that the design of parks and open spaces balance climate-adaptive design, such as resilient landscaping in place of impervious surfaces, climate-adaptive tree canopy, shade structures, drinking fountains, and cooling amenities, such as water spray areas, that provide respite from higher temperatures to reduce urban heat islands and overexposure to heat.

YPRO-1.21 Community Input. The City shall provide ongoing opportunities for public engagement and input into the parks and recreation planning process, including priorities for amenities, facilities, programming, and improvements.

YPRO-1.22 Organized Sports and Recreational Facilities. The City shall develop and maintain quality facilities (e.g., multi-field and multi-court sports complexes, skateparks, pump tracks, and challenge courses) for a variety of organized and recreational sports, prioritizing the needs of youth between the ages of 10 and 24, and particularly for youth in disadvantaged communities, in order to ensure opportunities for youth development, recreation, social development, and life and wellness skill building.

YPRO-1.23 Welcoming Amenities. In its parks and recreational facilities, the City shall incorporate amenities that invite the use of park facilities by all community members, including benches, accessible park paths and facilities, shaded seating, pathway lighting and restrooms that make it easier for older adults and families to enjoy the facilities.

YPRO-1.24 Municipal Golf Courses. The City shall support the maintenance and improvement of its municipal golf courses to ensure the City's courses remain competitive in the marketplace and encourage play.

Maintenance and Funding

YPRO-1.25 Maintenance of Existing Facilities. The City shall maintain and improve existing parks and recreational facilities to ensure safer, more attractive facilities that are responsive to community needs, prioritizing equitable capital improvements and new parks maintenance projects in disadvantaged communities.

YPRO-1.26 Volunteer Programs. The City shall continue to engage local residents, businesses, and community-based organizations in the stewardship and maintenance of parks and facilities through the Park Volunteer Program, Earth Day, Adopt-a-Park, Creek Week programs, and other collaborative partnerships and initiatives.

YPRO-1.27 Fee Benchmarking. The City shall periodically review Quimby in-lieu parkland dedication fees, park development impact fees, application review fees, and user fees and charges to ensure they are adequately providing for community needs and are competitive within the region.

YPRO-1.28 Leveraging Grant Funds. The City shall leverage municipal funds to access grants for the acquisition of parkland in park deficient areas, planning, construction and maintenance of parks and recreational facilities in underserved, disadvantaged communities from federal and state government agencies, philanthropic organizations, and private partners.

YPRO-1.29 Park Financing Strategies. The City shall leverage municipal funds to access grants for the acquisition of parkland in park deficient areas, planning, construction and maintenance of parks and recreational facilities in underserved, disadvantaged communities from federal and state government agencies, philanthropic organizations, and private partners.

Community Facilities

Community facilities such as schools, libraries, and community centers are foundational elements of thriving neighborhoods. In order to have meaningful, lasting, positive impacts for their users, public facilities and community services should be well-integrated and inclusive of the communities they serve. The location of various community facilities throughout Sacramento is shown on **Map YPRO-2**. Policies in this section seek to strengthen the role of community facilities in daily life and increase access to a range of services that contribute to quality of life for residents through partnerships with other public agencies and community organizations.

GOAL AND POLICIES

YPRO-2

Public facilities located, designed, and programmed to make a vital contribution to neighborhood quality of life.

YPRO-2.1 Access to Quality Public Facilities and Programs. The City shall strive to ensure that community centers, arts/cultural facilities, older adult care facilities, and other public facilities and programs are distributed equitably and conveniently throughout Sacramento and that the programs are accessible to all residents.

YPRO-2.2 Co-Location of Community-Serving Facilities. Whenever feasible, the City shall co-locate City facilities with other public facilities (schools, libraries, drainage facilities, utility providers) so that multiple services may be delivered from a single location.



YPRO-2.3 School Facilities. The City shall continue to coordinate with school districts in facility planning efforts to ensure the optimal use of existing sites and adequate advanced planning for embedding new school sites and facilities in the neighborhoods they serve. In addition to each school district's criteria and the school siting guidelines of the California Department of Education, the following City criteria should be applied by school districts in identifying new school sites:

- Locate elementary schools on sites that are safely and conveniently accessible, transit-supportive, and away from heavy traffic, excessive noise, and incompatible land uses;
- Locate school sites centrally with respect to their planned attendance areas;
- Locate schools in areas where established and/or planned walkways, bicycle paths, or greenways link schools with surrounding uses; and
- Locate, plan, and design new schools to be compatible with adjacent uses.

YPRO-2.4 Library Services. The City shall work with the Sacramento Public Library Authority to ensure adequate library services and facilities are maintained for all residents and promote the siting of facilities in accessible locations with the greatest potential for positive neighborhood impact.



YPRO-2.5 Digital Literacy and Access. The City shall support the Sacramento Public Library Authority in expanding access to digital resources and information tools and in delivering language, literacy, and workforce skills development programs and services.

YPRO-2.6 Community Partnerships. The City shall seek opportunities to partner with public and private entities to provide community services that support families and meet the diverse needs of community members of all ages, backgrounds, and interests.

YPRO-2.7 Child/Older Adult Care. The City shall encourage the development of reasonably priced high-quality childcare and older adult care facilities and services in a variety of settings, including in residential neighborhoods and near work sites.

Community Enrichment

Parks and recreation have an important role to play in advancing community enrichment. Cities are increasingly recognizing that facilities, programming, and services also have a profound effect on physical health, psychological health, personal development, and the quality of our social interactions. Regular physical activity and access to leisure and cultural options are linked to improved mood, reduced stress, and an enhanced sense of wellness in adults and children. In turn, this can help older adults live independently, younger people reach their full potential, and people of all ages build valuable life skills.

The City strives to provide accessible facilities and programs that support the health and well-being of its residents, including sponsoring health-focused events and collaborating with public and non-profit partners in public health and social services.

Nearly a quarter of the city’s population was born overseas, and programs that celebrate cultural diversity and cater to the varied needs of Sacramentans can help welcome newcomers into the community and build bonds between neighbors. As community needs continue to grow and evolve, City programs and services can support by evolving its programming to closely reflect the diversity of the community, including programs that offer language and job skill enhancement. The City also recognizes the diversity of age within Sacramento and strives to provide programming and opportunities for both youth and older adults.



Above and below: a holiday party at the Samuel Pannell Meadowview Community Center



A pumpkin patch at the Clunie Pool in McKinley Park

Policies in this section seek to promote active, healthy lifestyles throughout Sacramento with a wide range of facilities, programs, and services to exercise the body, the mind, and the spirit. The policies in this section also seek to support and celebrate Sacramento residents by striving to provide programming that reflects the diversity of the community.

SACRAMENTO YOUTH COMMISSION

Established in 1993, the Sacramento Youth Commission (SYC) is a 22-member youth-led legislative body which provides recommendations and advice to the City Council, the youth development policy manager, and the YPCE Department on all matters pertaining to youth. SYC conducts an annual review of the City's operating budget and capital improvement plan for youth programs and projects, and members encourage youth to actively participate in community affairs and City programs. Any individual between 14 and 22 years of age who attends a high school in Sacramento City limits or lives in Sacramento City limits can apply. SYC participants gain an understanding of the workings of city government and have the opportunity to develop their leadership skills while making a positive impact on their communities.



GOALS AND POLICIES

YPRO-3

Active, healthy lifestyles and health equity for all Sacramentans, including access to health facilities, goods, and services that help to ensure well-being for residents of all ages, abilities, and incomes.

YPRO-3.1 Health Data and Programming.

The City shall collaborate with the Sacramento County Department of Health Services to monitor and maintain data related to health outcomes and risk factors, and to use this data to inform new programs to serve the local community.

YPRO-3.2 Health Information. The City should provide and promote courses, seminars, and informational resources about health and healthy lifestyles at City facilities, including libraries, community centers, centers for older adults, parks, and recreational facilities. Prioritize resources for efforts in disadvantaged communities.

YPRO-3.3 Health Programming and Events.

The City should seek opportunities to partner with public agencies, advocacy groups, and local businesses to organize programming and events that promote healthy lifestyles, food choices, and work environments. Events may include health challenges, bike-to-work days, and sponsored lunchtime events.

YPRO-3.4 Activity Programming. The City should coordinate with local businesses, community-based organizations, and school districts to support a year-round calendar of community events in City parks and neighborhood venues. Events should be geared toward families and youth, and contain components of physical activity, healthy food, arts, and music.

YPRO-3.5 Youth Participation. The City shall work to increase participation of youth from lower-income communities of color in existing recreational programs through outreach, promotional activities, and increasing subsidized or free program spots. Where feasible, add new recreation and youth development programming to diversify the list of programs that are offered.

YPRO-3.6 Private Commercial Recreational Facilities. The City shall encourage the development of private commercial recreational facilities, such as fitness centers, yoga, dance and martial arts studios, and rock-climbing gyms, to help meet recreational interests of Sacramento’s residents, workforce, and visitors.

YPRO-3.7 Inclusive and Accessible Recreational Needs. In plans for new residential developments, the City shall require that project proponents address the recreational needs of future residents, including children, youth, older adults, and people with disabilities, and reflect the cultural diversity of the local population.

YPRO-3.8 Cooling Centers. The City shall continue to activate cooling centers at the community centers, aquatic centers, and water spray parks to help residents cope with higher temperatures. City parks shall be designed with materials and other strategies that offer cooling benefits to the residents.



Arts, culture, and learning opportunities that celebrate Sacramento’s diverse, multicultural communities, enhance quality of life, and enrich community culture.

YPRO-4

YPRO-4.1 Interpretation and Celebration. The City shall provide recreation, programming, special events and venues, and educational opportunities that honor, interpret, and celebrate the diversity, history, cultural heritage, and traditions of Sacramento and that respond to the diverse interests, needs, ages, and cultural backgrounds of local residents.

YPRO-4.2 Recreational Programs. The City shall endeavor to provide youth development, leadership, recreation, and community enrichment programs that promote wellness, social interaction, lifelong learning, skill development, personal enrichment, and positive relationships.

YPRO-4.3 Varied Locations and Settings, and Affordability. The City shall provide arts, culture, and recreation programs in a variety of locations and settings to make participation convenient and accessible. This may include the following:

- Expanding the range of activities and programs provided in City parks and public facilities,
- Exploring opportunities to provide programs and services in neighborhood settings, and
- Ensuring that events and venues are accessible by multiple transportation modes, are affordable to residents of all income demographics, and conducted in multiple languages.

YPRO-4.4 Youth-Centered Events. The City shall seek out opportunities for meaningfully and authentically involving young people – particularly from disadvantaged communities – in the planning and implementation of youth-centered events that develop confidence and leadership skills while also building community connections.

YPRO-4.5 Volunteering. The City shall expand opportunities for residents to volunteer their time and talents to contribute to community health and quality of life, including volunteer opportunities that encourage residents to socially connect across generations and cultures at the neighborhood level and citywide.

YPRO-4.6 Empowering Linguistically-Isolated Communities. The City shall continue to provide English language learning programs for non-native speakers, interpretation, and translation services, and assistance in accessing community services and programs as part of an effort to endeavor to empower linguistically-isolated communities in Sacramento.

YPRO-4.7 City-Owned Resources. The City shall enhance the quality of existing City-owned arts and cultural resources and facilities through reinvestment, communications, and marketing.



Drawing by Samantha Ward

IMPLEMENTING ACTIONS

Plans and Programs

YPRO-A.1: Youth, Parks, & Community Enrichment (YPCE) Parks Plan Update. The Parks Plan 2040 shall provide policy recommendations toward meeting the City's parkland and facility level of service goals; incorporate design guideline standards for park and recreation facilities; and strengthen access to parks and recreational facilities. The update should incorporate key priorities, implementation actions, and funding mechanisms and be undertaken with robust community engagement.

Responsible Entity: Youth, Parks, & Community Enrichment Department

Timeframe: Near-term (2024-2029)

YPRO-A.2: Park Audits. The City shall collaborate and support community-based organizations and neighborhood groups to conduct safety, maintenance, and access audits in City park and recreational facilities. The park audits should be conducted in neighborhoods throughout the city with the participation of Youth, Parks, & Community Enrichment (YPCE), Police Department, and other relevant City staff to identify and prioritize park safety and access improvements.

Responsible Entity: Youth, Parks, & Community Enrichment Department

Timeframe: Ongoing

YPRO-A.3: Mobile Wellness Clinics. Explore the feasibility of a neighborhood program that provides mobile health services, healthy food, or workshops in disadvantaged communities, run by medical service providers or Sacramento County Department of Health Services, but hosted in local neighborhood facilities such as schools, parks, community centers, and library parking lots.

Responsible Entity: Youth, Parks, & Community Enrichment Department

Timeframe: Long-term (2036-2040)

Planning Studies and Reports

YPRO-A.4: Youth Internships. The City shall assess the feasibility of expanding its youth workforce programs to hire and train youth for seasonal work at City parks and recreational facilities throughout the year. The assessment should evaluate options to involve youth in program planning and work within recreation programs as a way to provide employment and life skills training and to strengthen connections between youth and their community.

Responsible Entity: Youth, Parks, & Community Enrichment Department

Timeframe: Near-term (2024-2029)

YPRO-A.5: Violence Prevention and Youth Development. As part of a comprehensive strategy to improve the overall health and well-being of youth, young adults, families, and communities and promote prosocial decisions, the City shall study evidence based programming and best practices to coordinate funding and programs, along with community engagement programming and other initiatives for optimal impact in targeted areas of Sacramento.

Responsible Entity: Office of Violence Prevention (lead); Youth, Parks, & Community Enrichment Department (support); Office of Diversity and Equity (support)

Timeframe: Near-term (2024-2029)

Regulations, Standards, and. Development Review

YPRO-A.6: Joint Use Standards. The City shall develop and periodically update standards for the development of joint-use school and community facilities.

Responsible Entity: Youth, Parks, & Community Enrichment Department

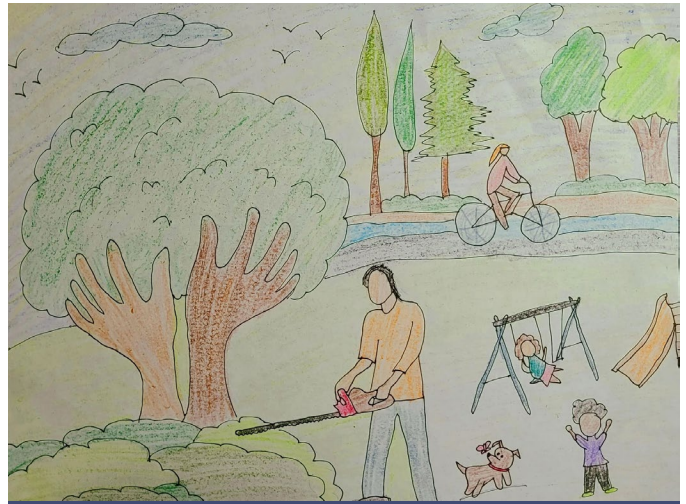
Timeframe: Near-term (2024-2029)

YPRO-A.7: Performance-Based Prioritization.

The Department of Youth, Parks, & Community Enrichment (YPCE) shall update the park project programming guide to incorporate a performance-based system for equitably prioritizing parks and recreation investments that links facility improvement priorities to safety standards, funding availability, disadvantaged communities, public health, and recreational goals through a ranking scale that includes measured public health outcomes.

Responsible Entity: Youth, Parks, & Community Enrichment Department

Timeframe: Near-term (2024-2029)



Drawing by Muhammad Riaz



Drawing by Alexandra Cooke