

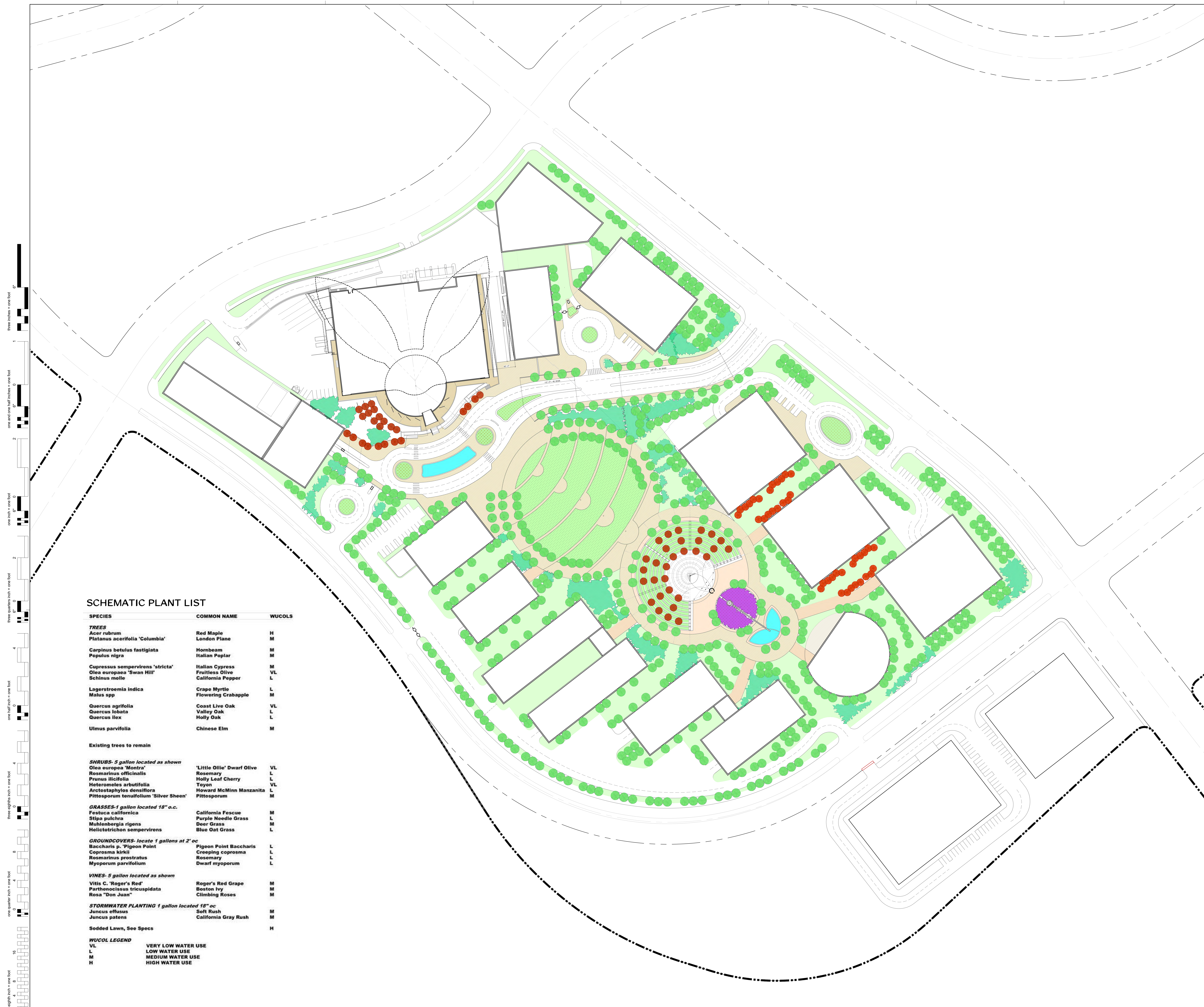
**FONG & CHAN ARCHITECTS**  
 ARCHITECTURE • PLANNING • INTERIOR DESIGN  
 1361 BUSH STREET • SAN FRANCISCO, CALIFORNIA 94109  
 TEL (415) 931-6600 • FAX (415) 931-4601 • foa@fca-arch.com



**CALIFORNIA NORTHSTATE UNIVERSITY MEDICAL CENTER**

Innovation Park, Natomas, Sacramento, CA 95834  
 AGENCY APPROVAL

OSHPD PROJECT NUMBER: H191887-34-00  
 CONSULTANTS:



**SCHEMATIC PLANT LIST**

SPECIES	COMMON NAME	WUCOLS
<b>TREES</b>		
<i>Acer rubrum</i>	Red Maple	H
<i>Platanus acerifolia</i> 'Columbia'	London Plane	M
<i>Carpinus betulus fastigiata</i>	Hornbeam	M
<i>Populus nigra</i>	Italian Poplar	M
<i>Cupressus sempervirens</i> 'stricta'	Italian Cypress	M
<i>Olea europaea</i> 'Swan Hill'	Fruitless Olive	VL
<i>Schinus molle</i>	California Pepper	L
<i>Lagerstroemia indica</i>	Crape Myrtle	L
<i>Malus spp</i>	Flowering Crabapple	M
<i>Quercus agrifolia</i>	Coast Live Oak	VL
<i>Quercus lobata</i>	Valley Oak	L
<i>Quercus ilex</i>	Holly Oak	L
<i>Ulmus parvifolia</i>	Chinese Elm	M
Existing trees to remain		
<b>SHRUBS- 5 gallon located as shown</b>		
<i>Olea europaea</i> 'Montra'	'Little Ollie' Dwarf Olive	VL
<i>Rosmarinus officinalis</i>	Rosemary	L
<i>Prunus ilicifolia</i>	Holly Leaf Cherry	L
<i>Heteromeles arbutifolia</i>	Tayon	VL
<i>Arctostaphylos densiflora</i>	Howard McMinn Manzanita	L
<i>Pittosporum tenuifolium</i> 'Silver Sheen'	Pittosporum	M
<b>GRASSES- 1 gallon located 18" o.c.</b>		
<i>Festuca californica</i>	California Fescue	M
<i>Stipa pulchra</i>	Purple Needle Grass	L
<i>Muhlenbergia rigens</i>	Deer Grass	M
<i>Helictotrichon sempervirens</i>	Blue Oat Grass	L
<b>GROUNDCOVERS- locate 1 gallon at 2' oc</b>		
<i>Baccharis p.</i> 'Pigeon Point'	Pigeon Point Baccharis	L
<i>Coprosma kirkii</i>	Creeping coprosma	L
<i>Rosmarinus prostratus</i>	Rosemary	L
<i>Myoporum parvifolium</i>	Dwarf myoporum	L
<b>VINES- 5 gallon located as shown</b>		
<i>Vitis C.</i> 'Roger's Red'	Roger's Red Grape	M
<i>Parthenocissus tricuspidata</i>	Scout Ivy	M
<i>Rosa</i> "Don Juan"	Climbing Roses	M
<b>STORMWATER PLANTING 1 gallon located 18" oc</b>		
<i>Juncus effusus</i>	Soft Rush	M
<i>Juncus patens</i>	California Gray Rush	M
Sodded Lawn, See Specs		
<b>WUCOL LEGEND</b>		
VL	VERY LOW WATER USE	
L	LOW WATER USE	
M	MEDIUM WATER USE	
H	HIGH WATER USE	

NO	DESCRIPTION	DATE
REVISIONS		

KEY PLAN  
 SHEET TITLE  
**CONCEPTUAL LANDSCAPE PLAN**

PROJECT NO. 467 SHEET NO.  
 DRAWN BY: WH  
 CHECKED BY: PD  
 SCALE: 1/8"=1'-0"  
 DATE: 12/22/21  
 Printed on: 07/20/21

**EIR L1-0**

one eighth inch = one foot  
 one quarter inch = one foot  
 one half inch = one foot  
 three eighths inch = one foot  
 one inch = one foot  
 one and one eighth inch = one foot  
 one and one quarter inch = one foot  
 one and one half inch = one foot  
 one and three quarters inch = one foot  
 two inches = one foot  
 three inches = one foot  
 four inches = one foot  
 five inches = one foot  
 six inches = one foot  
 seven inches = one foot  
 eight inches = one foot  
 nine inches = one foot  
 ten inches = one foot  
 eleven inches = one foot  
 twelve inches = one foot

If this sheet is not 36" x 48" it is a reduced print - scale accordingly