

# LAND PARK

## COMMUNITY PLAN AREA WORKSHOP

sacramento | 2040



# ICE BREAKER

[www.menti.com](https://www.menti.com)

Enter code: 42 40 71

- I. In one word or phrase, describe how you'd like your neighborhood to be in 2040.



# AGENDA

- Welcome / Ice Breaker
- Opening presentation
  - What is Sacramento | 2040 ?
  - What are Community Area Plans?
  - Land Park Assets, Issues, and Priorities
  - Activity Introduction
- Table activity
- Report Back
- Next Steps



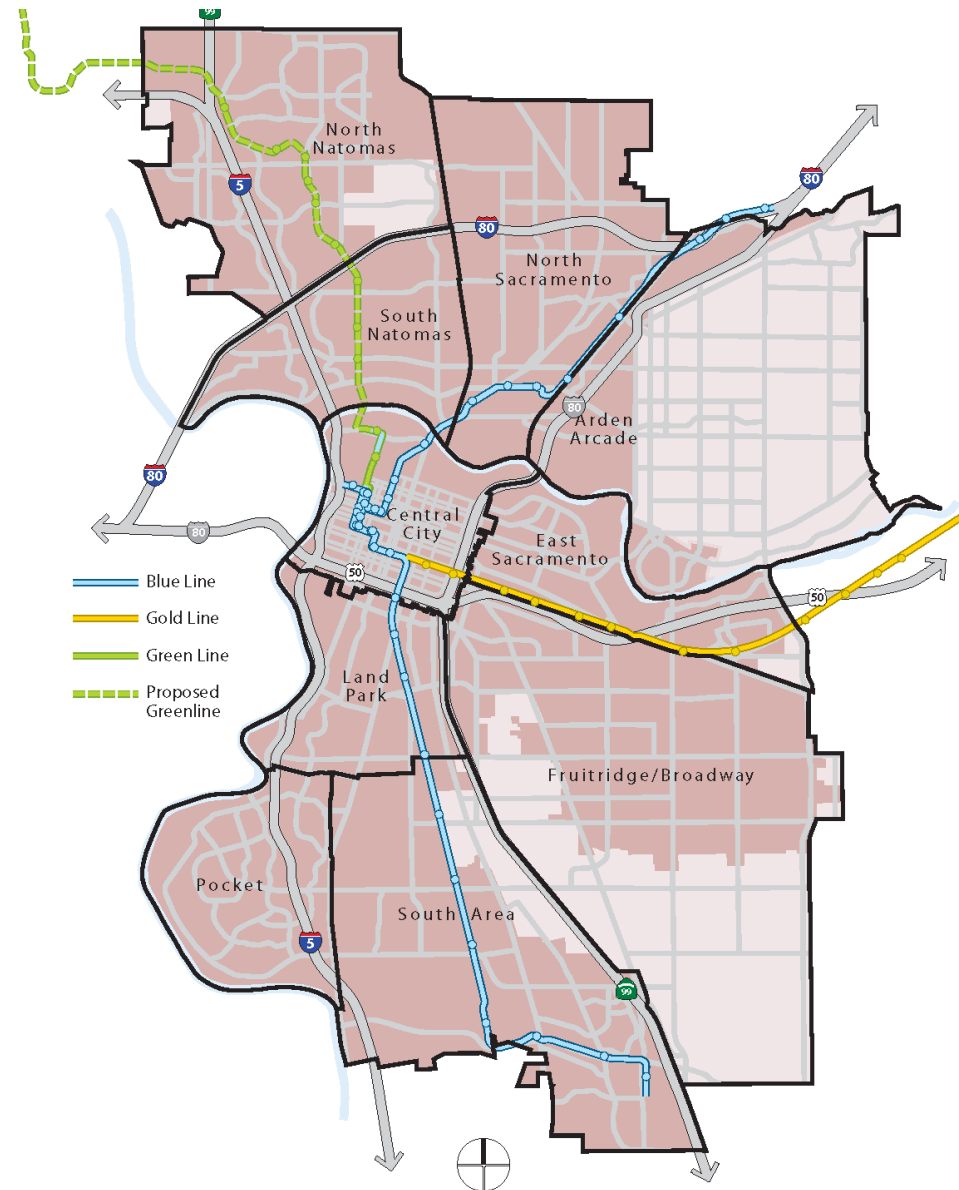


# WHAT IS SACRAMENTO | 2040?



# WHAT IS SACRAMENTO | 2040?

- Updates for key long-range planning documents:
  - Climate Action Plan
  - General Plan
    - Community Plans



## WHAT IS A GENERAL PLAN?

- Blueprint for urban development and preservation
- Provides a 20-year framework for Sacramento's future

## Sacramento's General Plan will address:

- Land Use & Urban Design
- Historic & Cultural Resources
- Economic Development
- Housing
- Mobility
- Utilities
- Education, Recreation & Culture
- Public Health & Safety
- Environmental Resources
- Environmental Constraints
- Environmental Justice

## WHAT IS A CLIMATE ACTION PLAN?

- Roadmap for reducing a city's GHG emissions and adapting to climate change

Sacramento's Climate Action Plan will include:

- Inventory of current emissions
- Greenhouse gas targets and forecasts
- Greenhouse gas mitigation measures



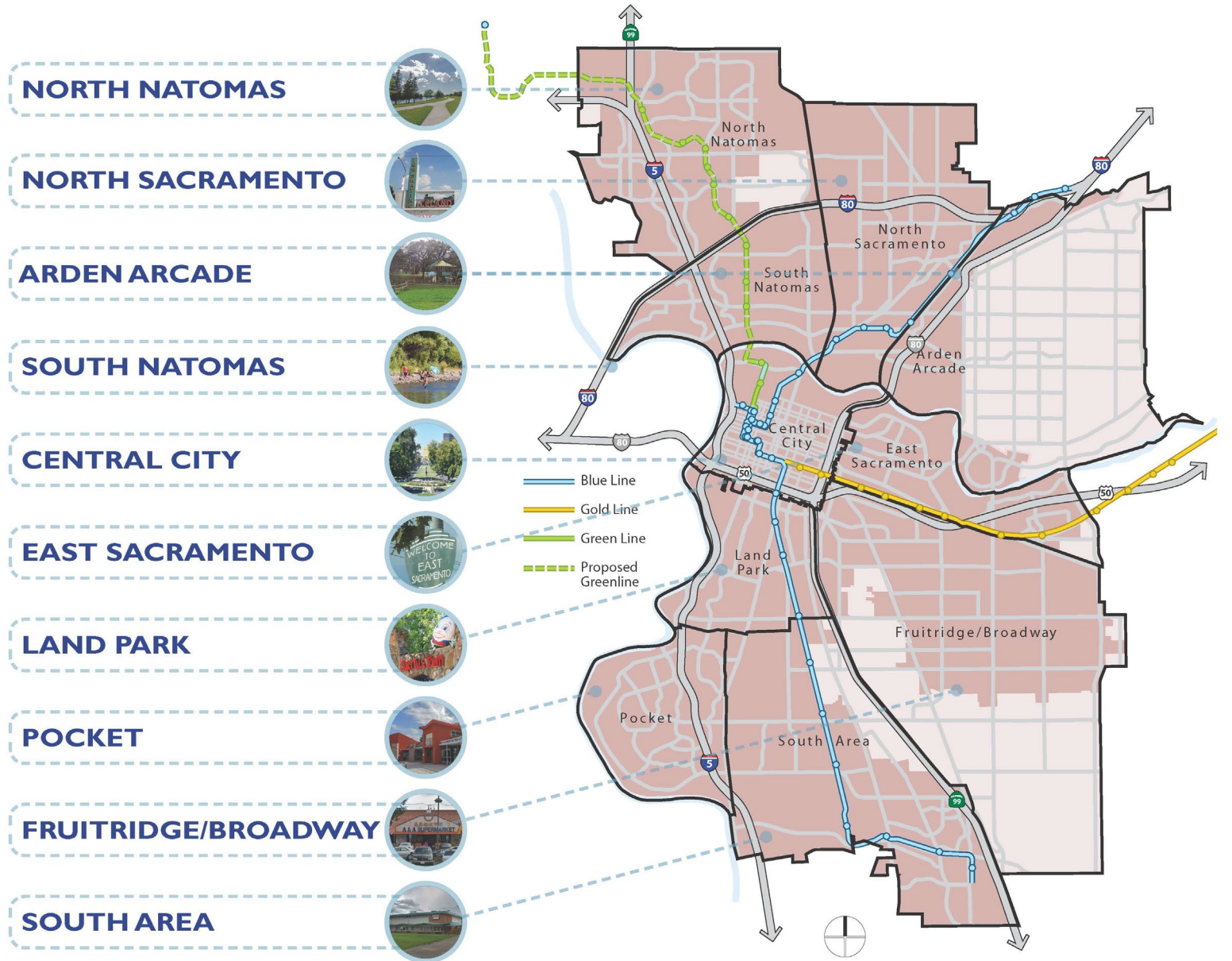




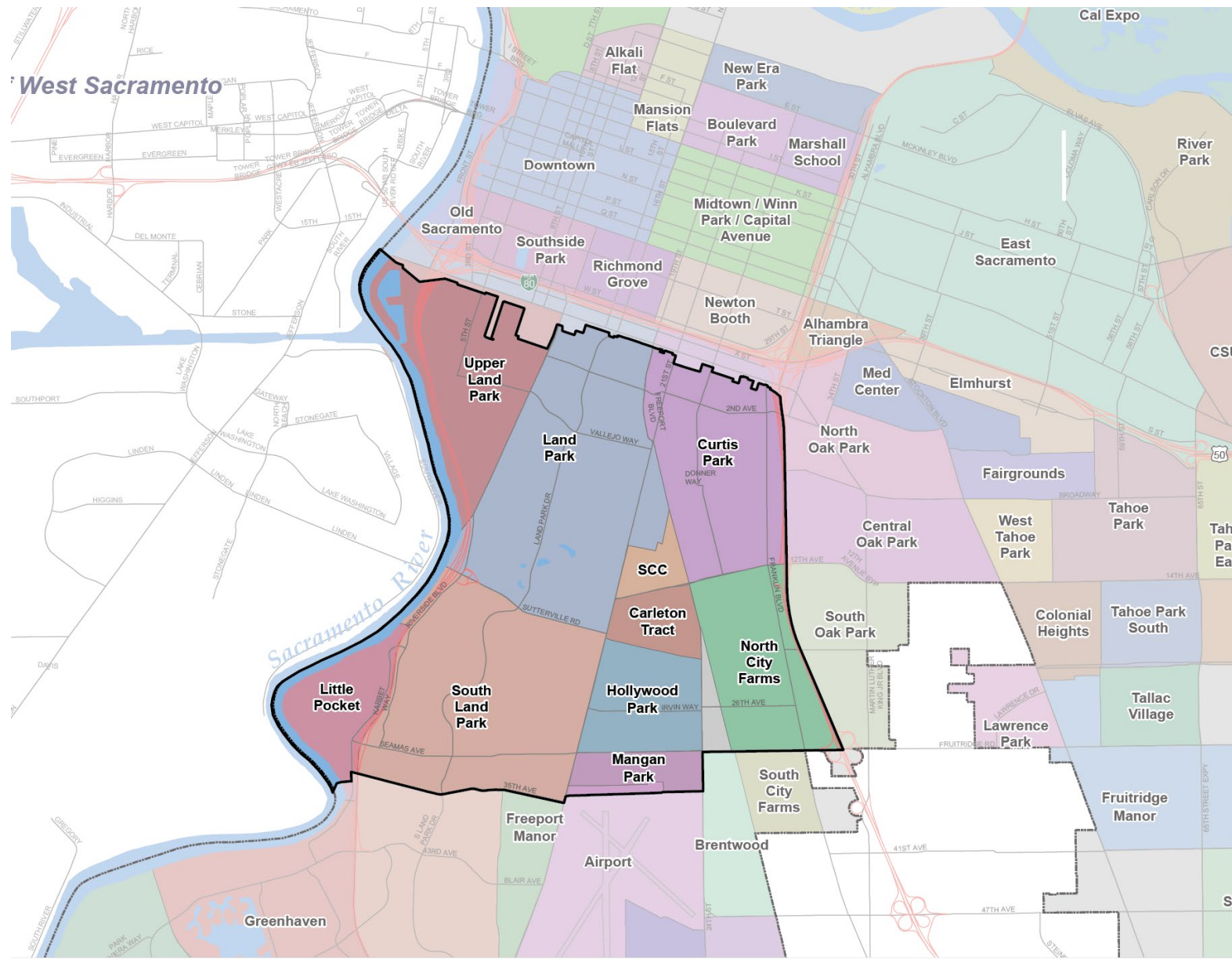
# WHAT ARE COMMUNITY PLANS?

# WHAT IS A COMMUNITY PLAN?

- Community Plans include specific policies that are localized and unique to Sacramento's different community areas



# LAND PARK COMMUNITY PLAN AREA

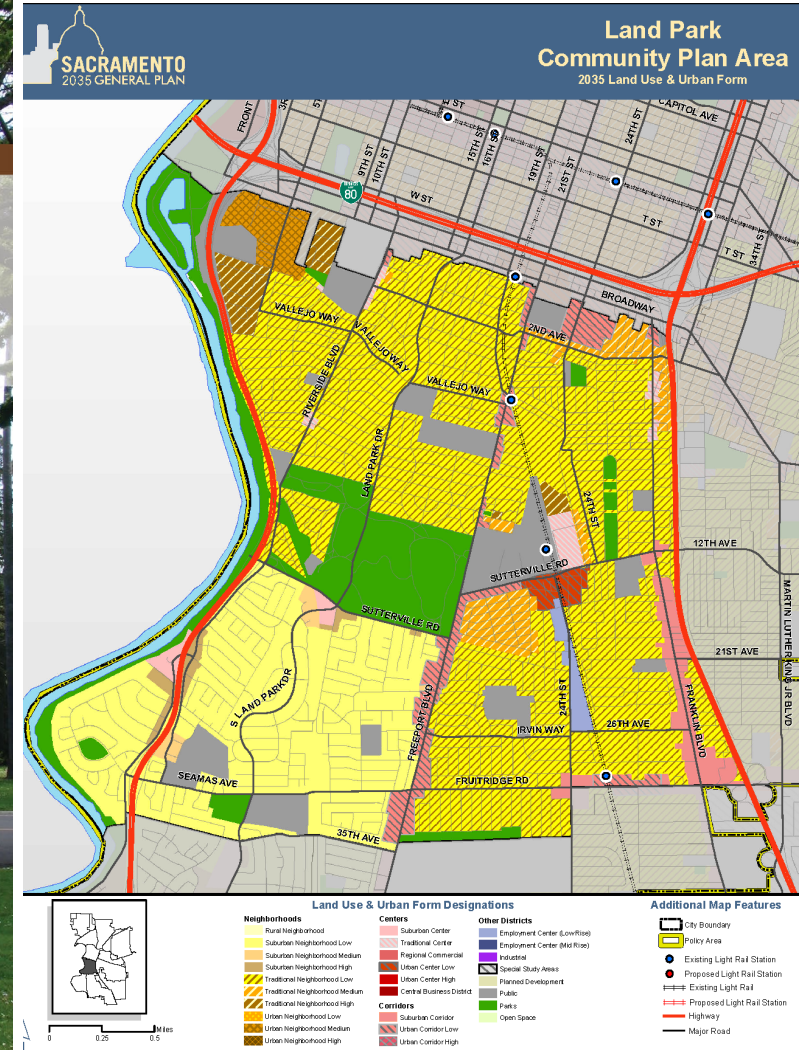




# WHY ARE WE UPDATING THE PLANS?

- Many of the Community Plans are outdated, and have different levels of detail
- The updated plan will reflect community priorities identified through the engagement process

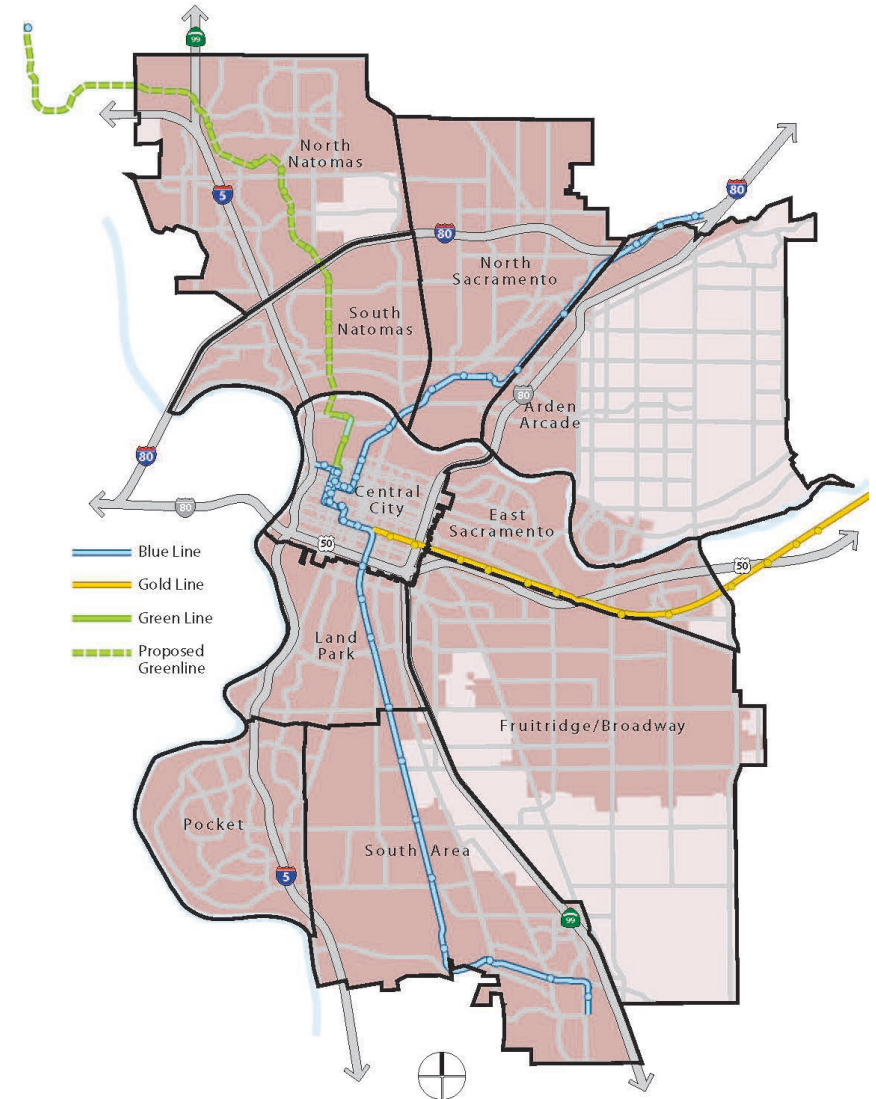
## LAND PARK COMMUNITY PLAN



# WHAT IS IN A COMMUNITY PLAN?

## Each Community Plan will include:

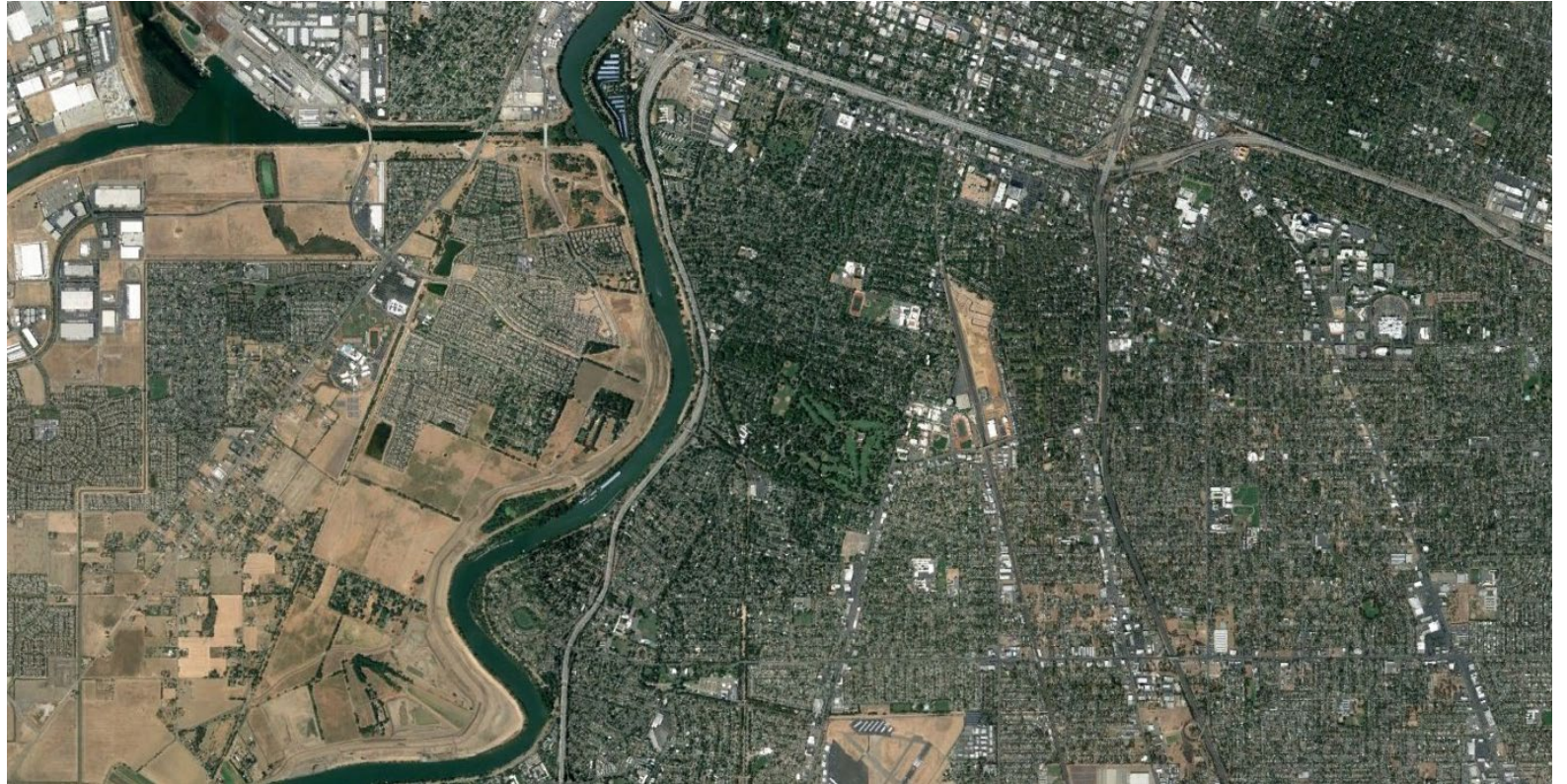
- Community Vision
- Community Profile
- Community Issues
- Land Use Designations
- Community Policies
- Opportunity Areas





# WHAT WILL THE PLAN BE BASED ON?

- Demographic, geographic, and economic data
- Input from the community





# PROJECT SCHEDULE

2020

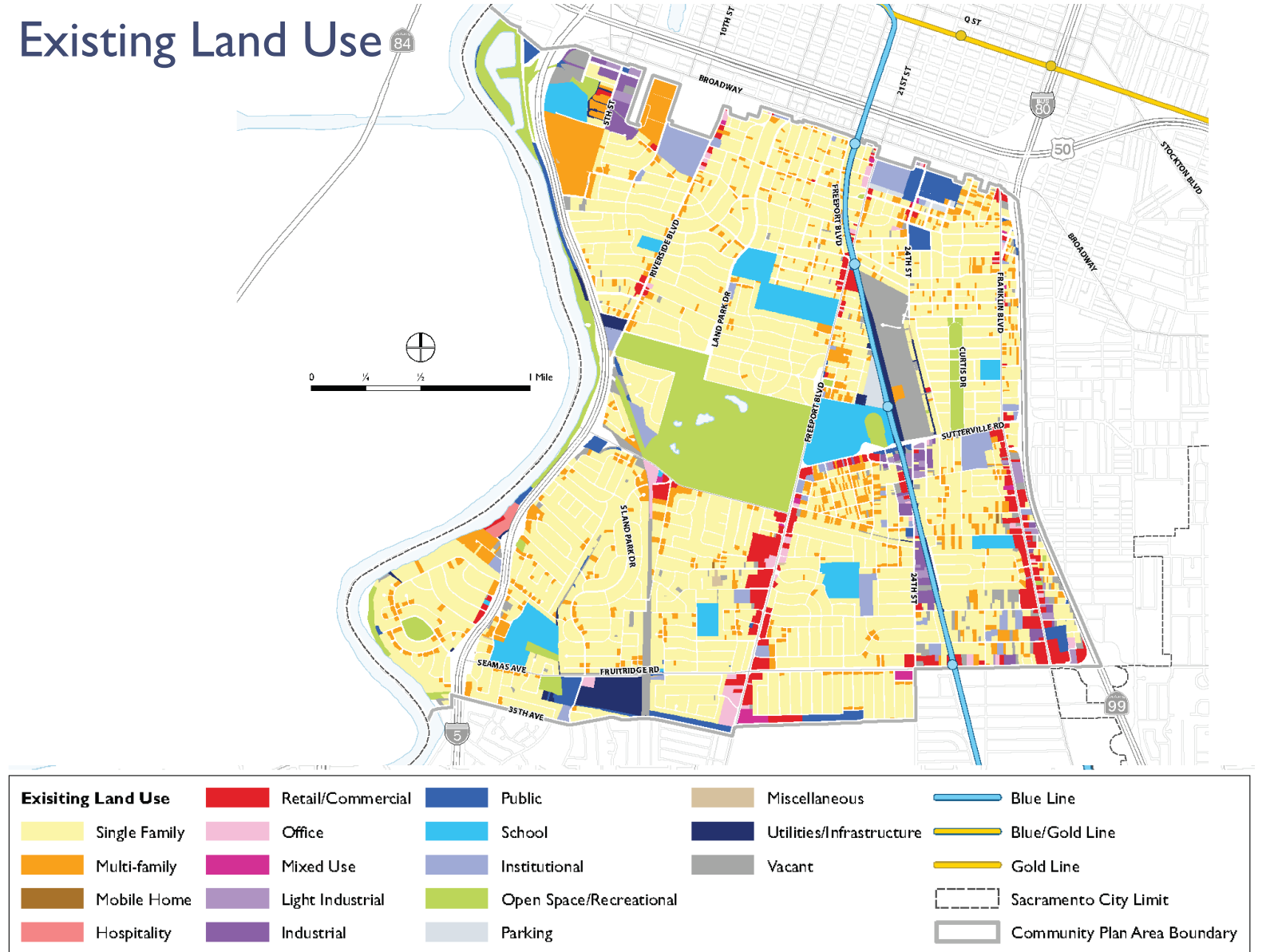
2021



# LAND PARK HAS:

- Housing (yellow and orange)
- Some commercial corridors (red)
- Parks throughout (green)
- Vacant land (grey)

## Existing Land Use

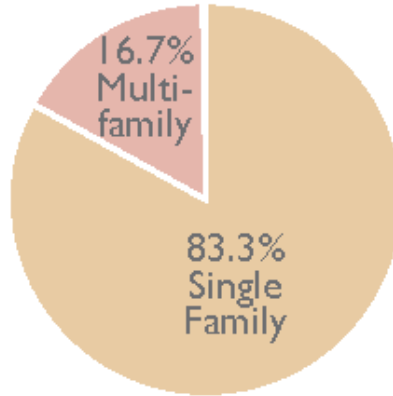


# LAND PARK HAS:

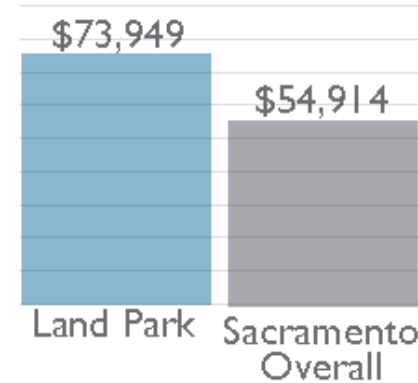
- A mix of single family and multi-family housing
- Median incomes and home prices higher than the city-wide medians
- Most jobs in government

## Economic Data

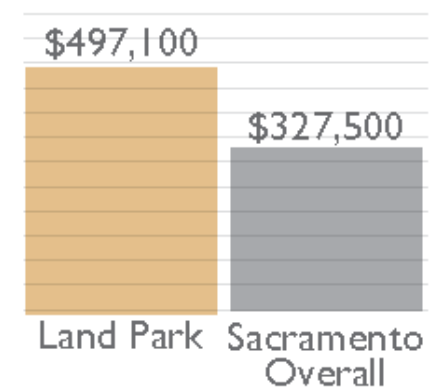
### HOUSING TYPES



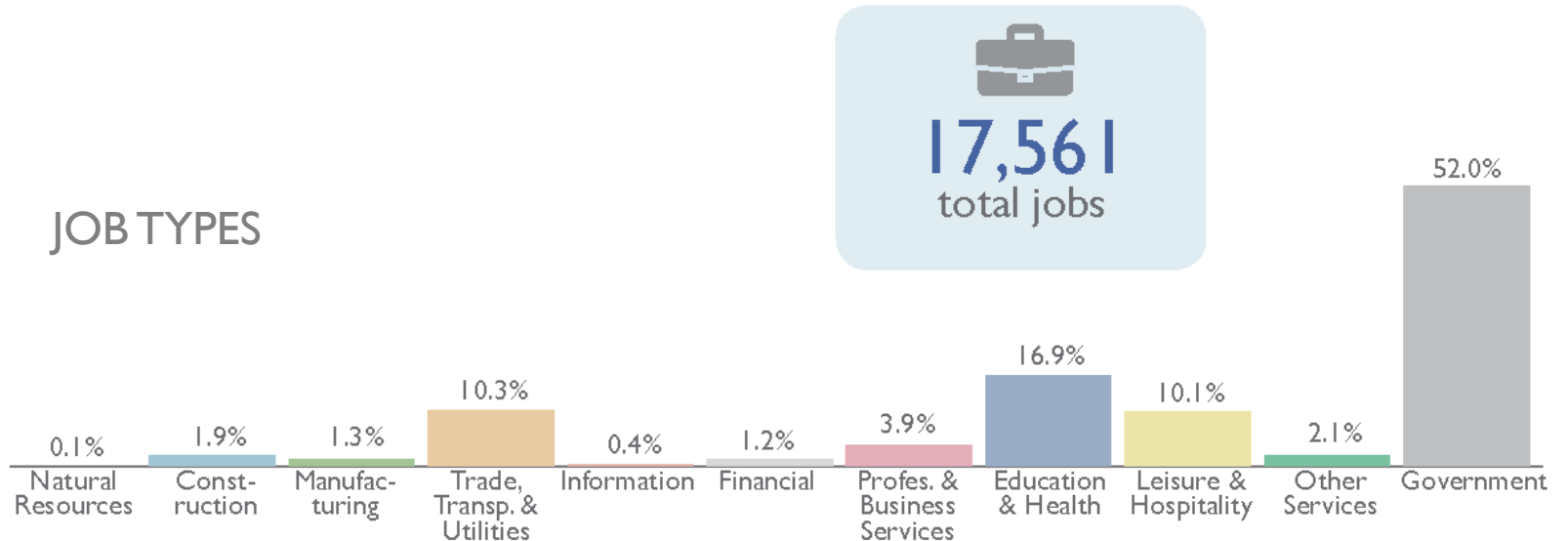
### 2018 MEDIAN ANNUAL HOUSEHOLD INCOME



### 2018 MEDIAN HOME SALE PRICE



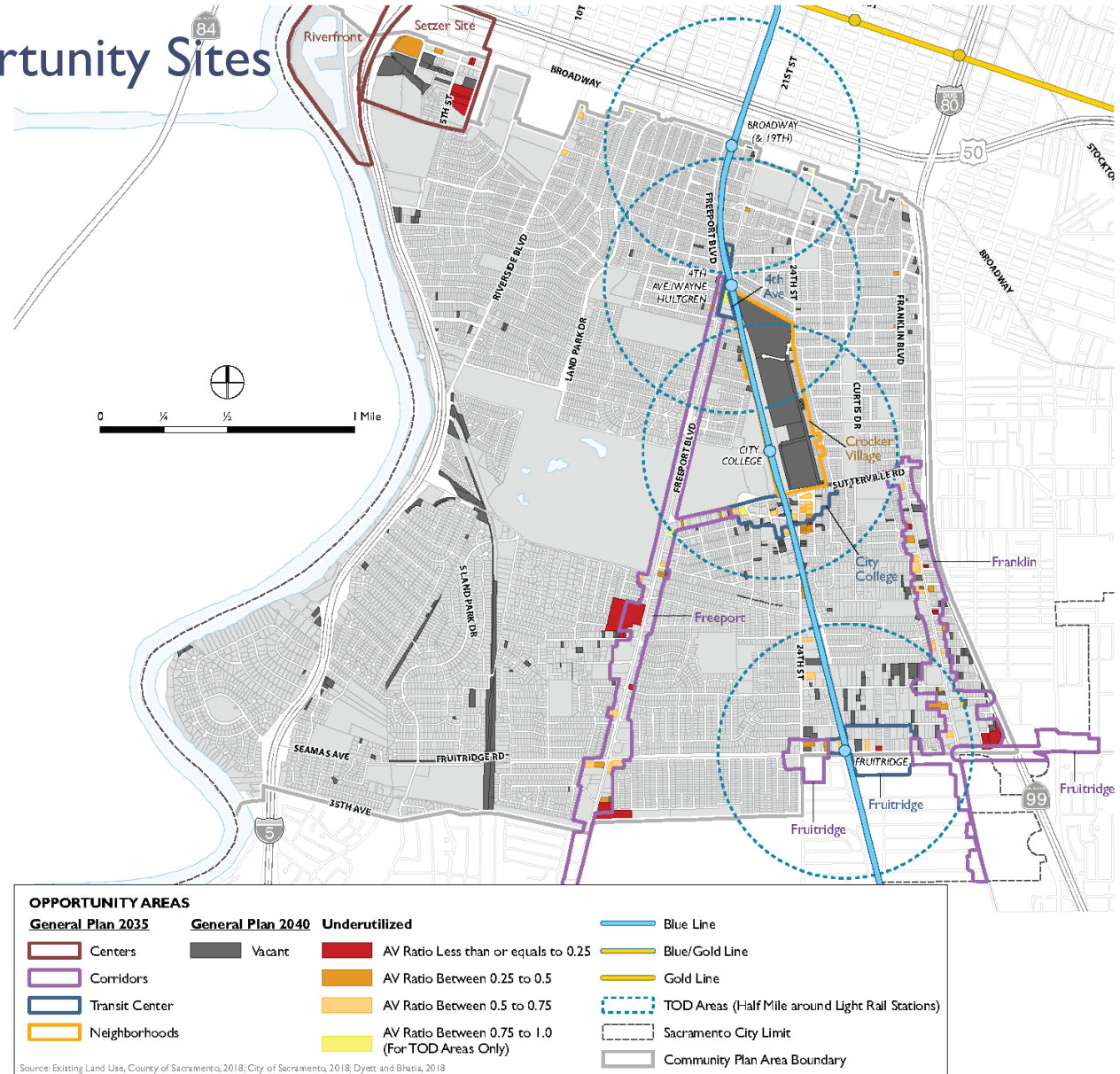
### JOB TYPES



# THERE ARE OPPORTUNITY SITES:

- In vacant parcels
- In underutilized lands
- Near transit stops

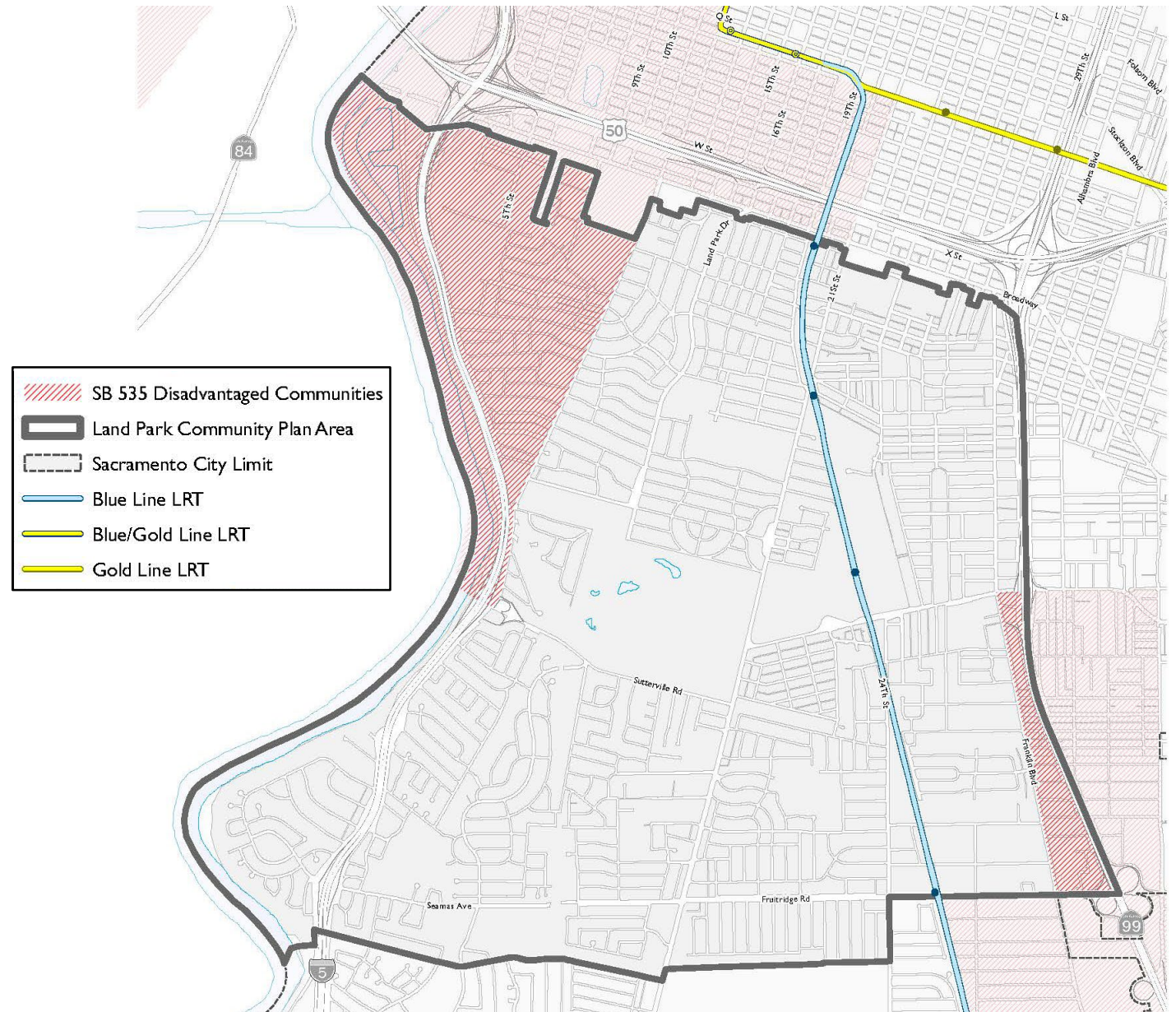
## Opportunity Sites





# EXPOSURE TO ENVIRONMENTAL PROBLEMS

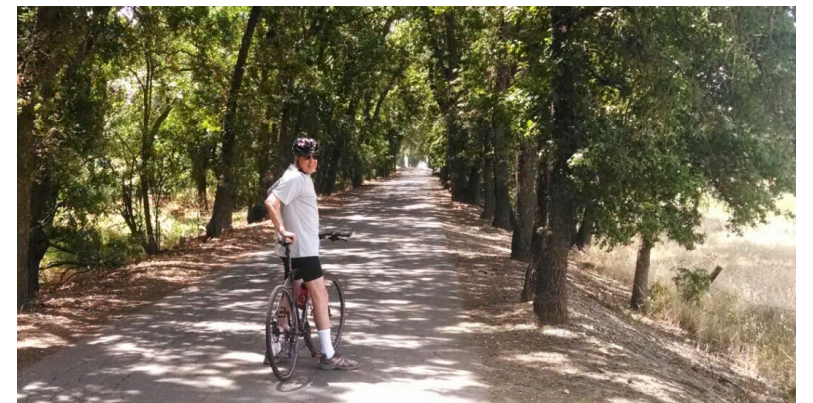
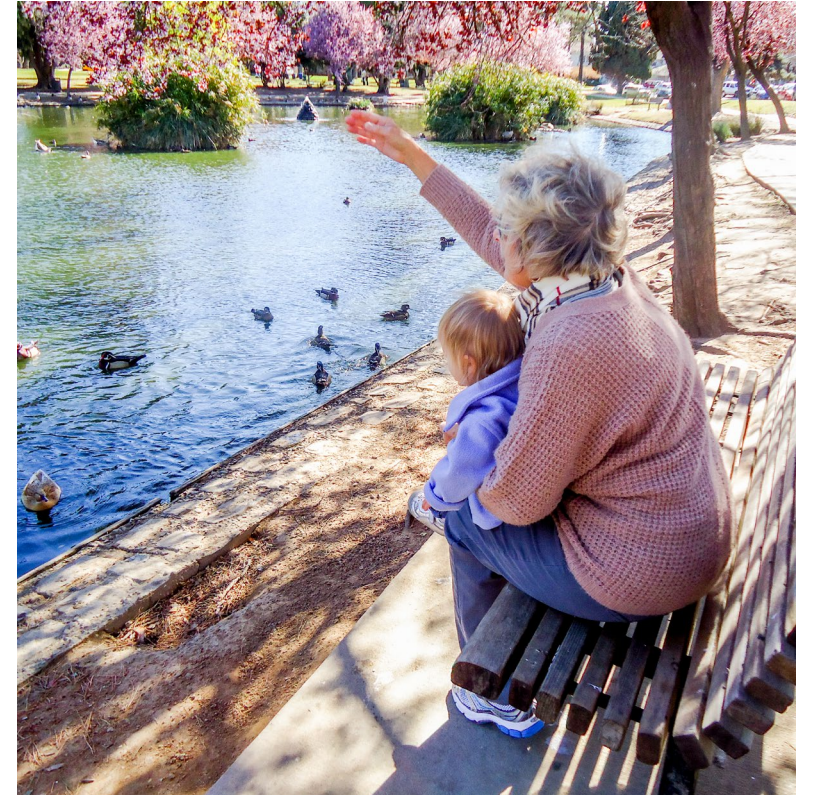
- Air quality
- Pollution
- Health risks
- Poverty





# AGE-FRIENDLY COMMUNITIES

- Outdoor spaces and buildings
- Transportation
- Housing
- Social participation
- Respect and social inclusion
- Civic participation and employment
- Communication and information
- Community and Health services





# WHAT ARE THE ISSUES AND PRIORITIES FOR THE LAND PARK COMMUNITY PLAN AREA?



# WHAT COMMUNITY ASSETS SHOULD WE BUILD ON?

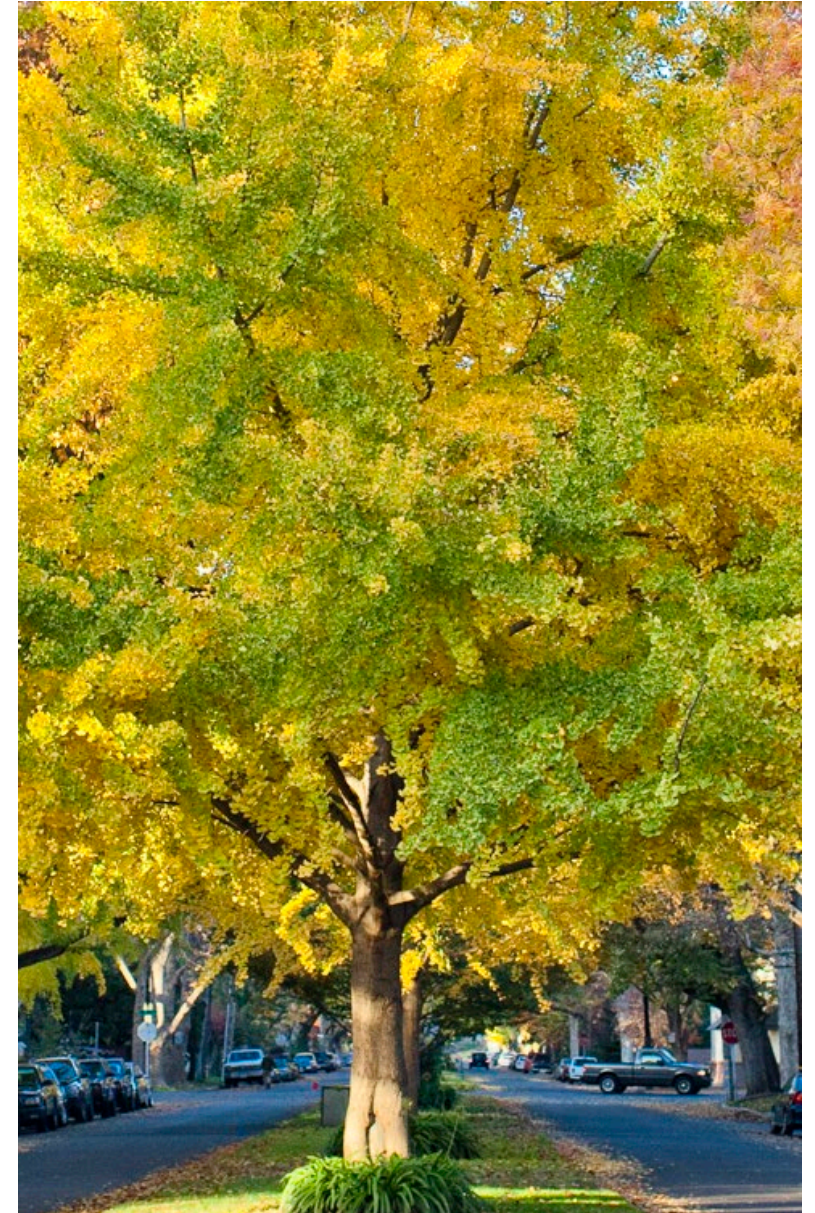
- Gathering spaces?
- Local businesses?
- Community qualities?





# WHAT WOULD YOU LIKE TO SEE CHANGE? WHAT'S MISSING?

- Housing?
- Food access?
- Green spaces?
- Safety?
- Climate action?
- Inclusiveness?
- Economic opportunities?





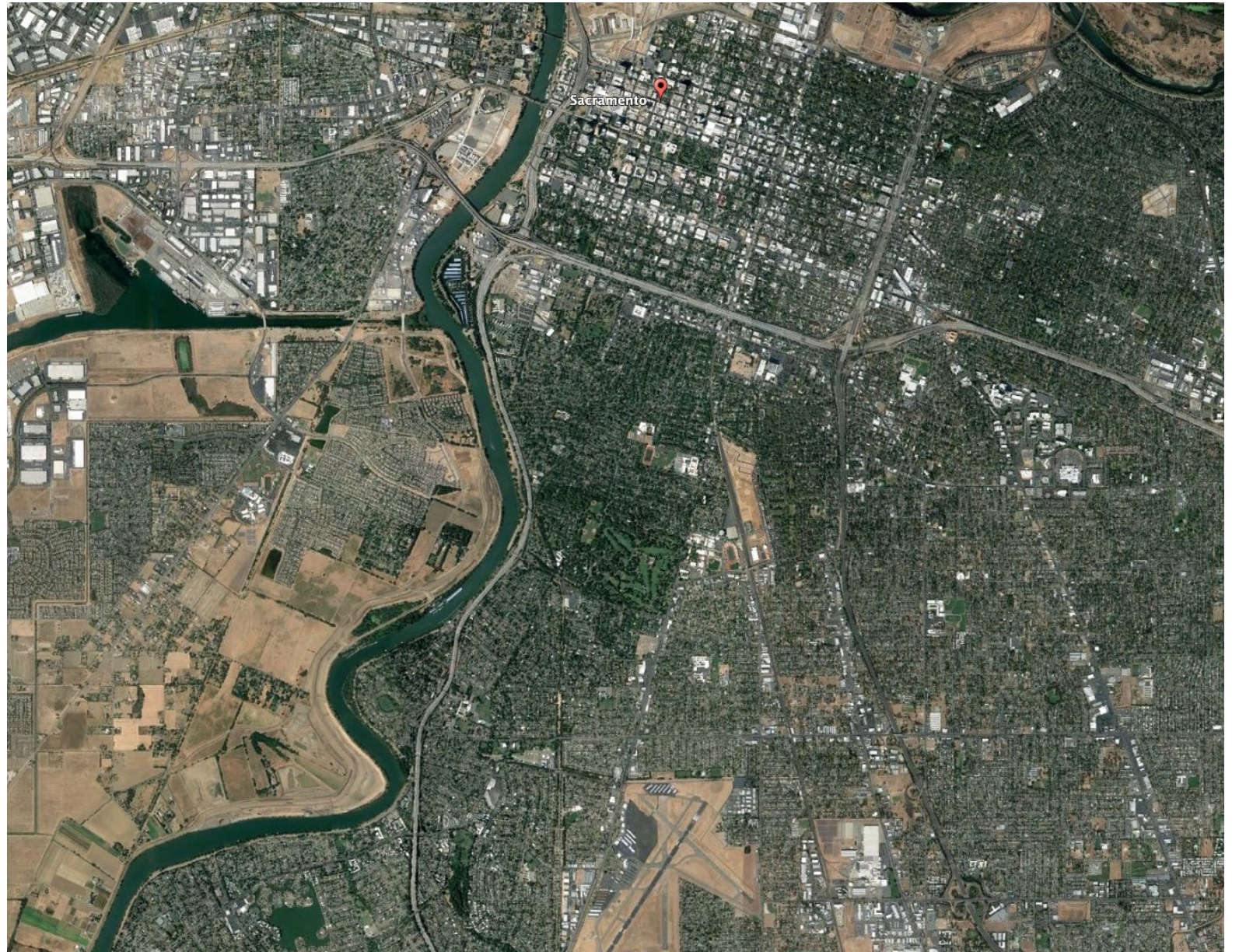
# ARE THERE BARRIERS TO GETTING AROUND?

- Transit access?
- Walking and biking infrastructure?
- Safety for all ages and abilities?





WHAT'S YOUR  
VISION FOR THE  
FUTURE OF THE  
LAND PARK  
COMMUNITY PLAN  
AREA?







# TONIGHT'S ACTIVITY

## WE WANT TO HEAR FROM YOU:

- What are the issues and opportunities for the Land Park Community Plan Area?

1. Which places in your neighborhood make the biggest contribution to the community?
2. Which areas would you like to see change over the next 10-20 years?
3. What barriers or obstacles are there to getting around in your neighborhood?
4. What headline should describe the Land Park Community Plan Area on the cover of Sacramento Magazine in the year 2040? What images would accompany the article?



# REPORT BACK:

- What were the key points of discussion at your table?

- /// SB 535 Disadvantaged Communities (4)
- ▭ Land Park Community Plan Area
- - - Sacramento City Limit
- ⋯ Neighborhood Boundary (37)
- Parks
- Blue Line LRT
- Blue/Gold Line LRT
- Gold Line LRT
- Green Line LRT





# WHAT ARE THE NEXT STEPS?



# STAY ENGAGED

- Subscribe to our mailing list tonight or online at: [sac2040gpu.org](http://sac2040gpu.org)
- Contact:  
Matt Hertel, Senior Planner, City of Sacramento  
(916) 808-7158  
[mhertel@cityofsacramento.org](mailto:mhertel@cityofsacramento.org)

