
FRUITRIDGE BROADWAY

COMMUNITY PLAN AREA WORKSHOP

sacramento | 2040



ICE BREAKER

www.menti.com

Enter code: 75 06 78

In one word or phrase, describe how you'd like your neighborhood to be in 2040.

AGENDA

- Welcome / Ice Breaker
- Opening presentation
 - What is Sacramento | 2040 ?
 - What are Community Area Plans?
 - Fruitridge Broadway Assets, Issues, and Priorities
 - Activity Introduction
- Table activity
- Report Back
- Next Steps

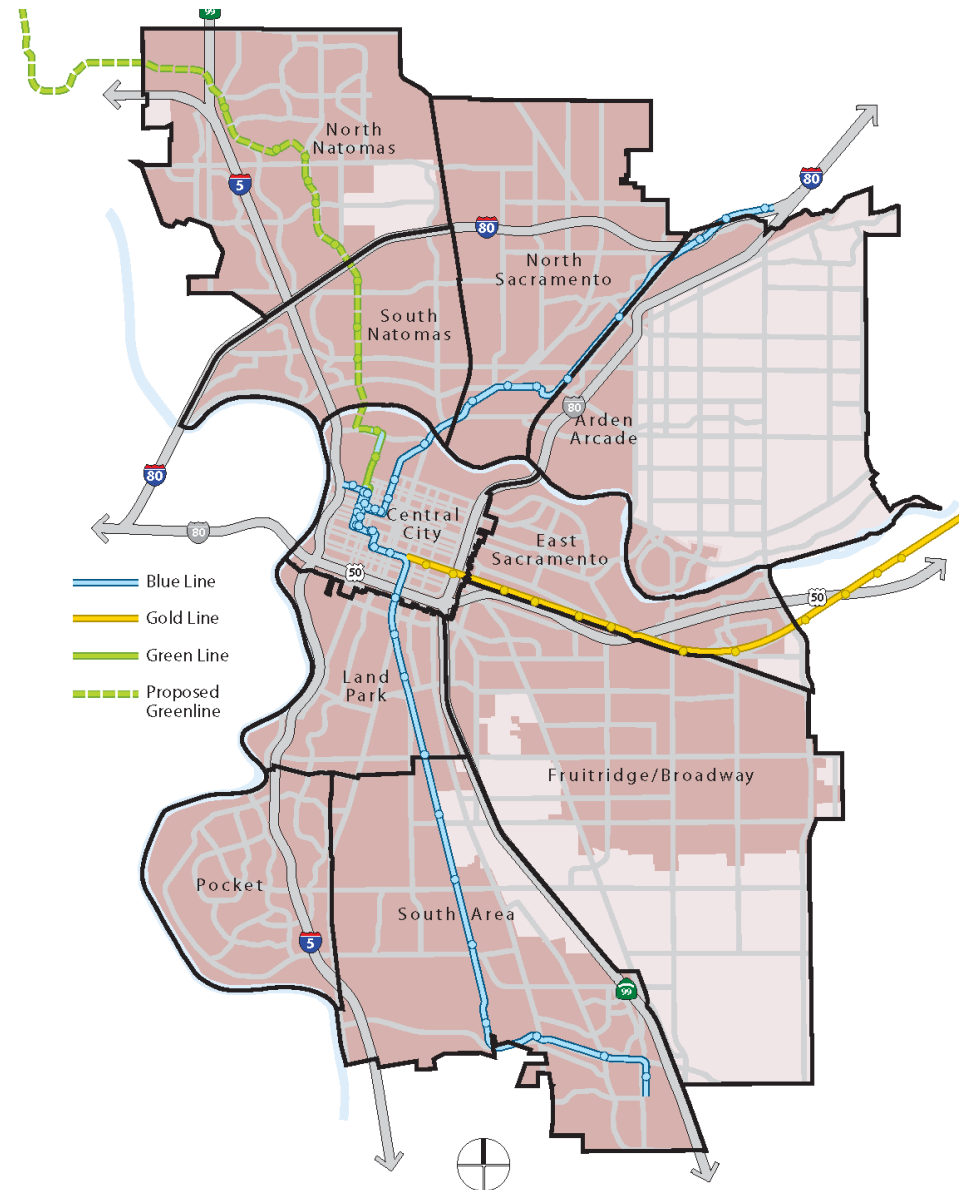




WHAT IS SACRAMENTO | 2040?

WHAT IS SACRAMENTO | 2040?

- Updates for key long-range planning documents:
 - Climate Action Plan
 - General Plan
 - Community Plans



WHAT IS A GENERAL PLAN?

- Blueprint for urban development and preservation
- Provides a 20-year framework for Sacramento's future

Sacramento's General Plan will address:

- Land Use & Urban Design
- Historic & Cultural Resources
- Economic Development
- Housing
- Mobility
- Utilities
- Education, Recreation & Culture
- Public Health & Safety
- Environmental Resources
- Environmental Constraints
- Environmental Justice

WHAT IS A CLIMATE ACTION PLAN?

- Roadmap for reducing a city's GHG emissions and adapting to climate change

Sacramento's Climate Action Plan will include:

- Inventory of current emissions
- Greenhouse gas targets and forecasts
- Greenhouse gas mitigation measures

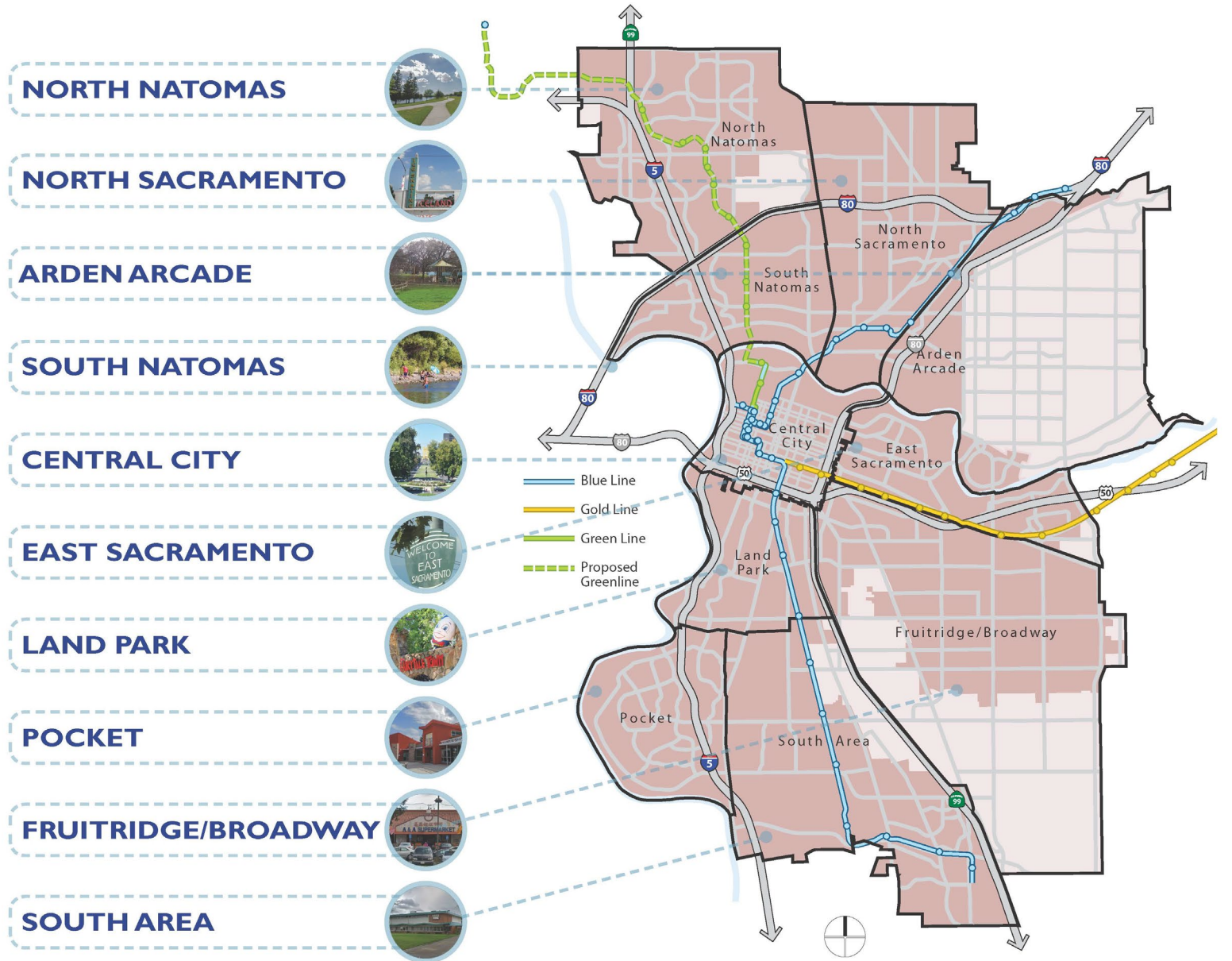




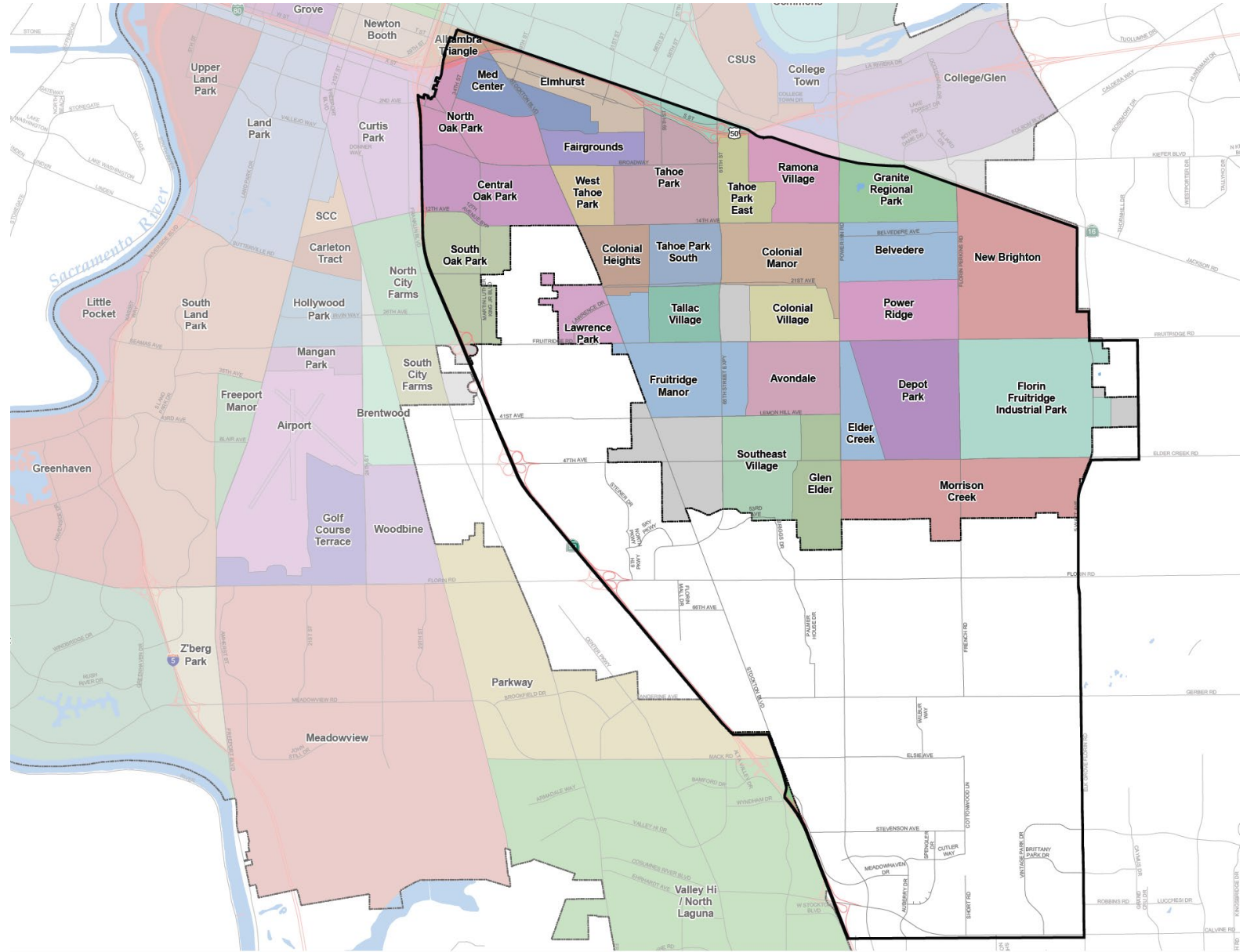
WHAT ARE COMMUNITY PLANS?

WHAT IS A COMMUNITY PLAN?

- Community Plans include specific policies that are localized and unique to Sacramento's different community areas



FRUITRIDGE BROADWAY COMMUNITY PLAN AREA



WHY ARE WE UPDATING THE PLANS?

- Many of the Community Plans are outdated, and have different levels of detail
- The updated plan will reflect community priorities identified through the engagement process

FRUITRIDGE BROADWAY COMMUNITY PLAN

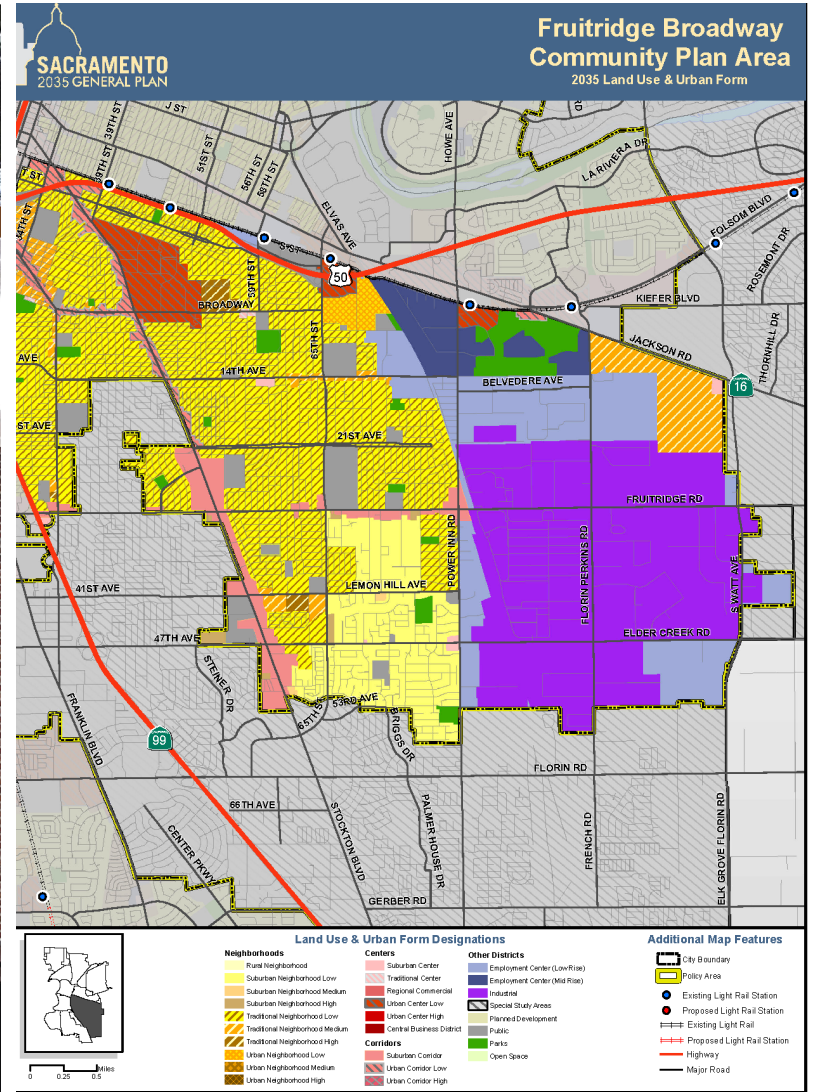
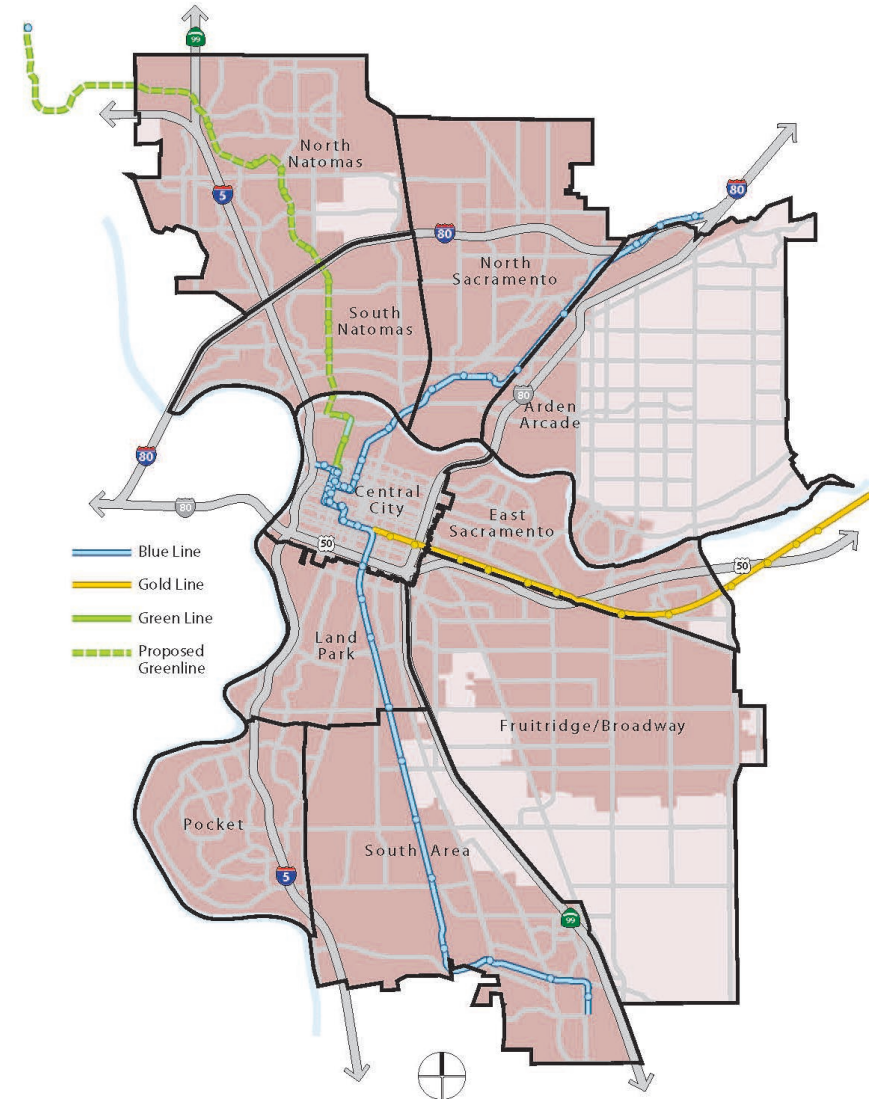


Figure FB-2
2035 General Plan Land Use & Urban Form Designations
for the Fruitridge Broadway Community Plan Area

WHAT IS IN A COMMUNITY PLAN?

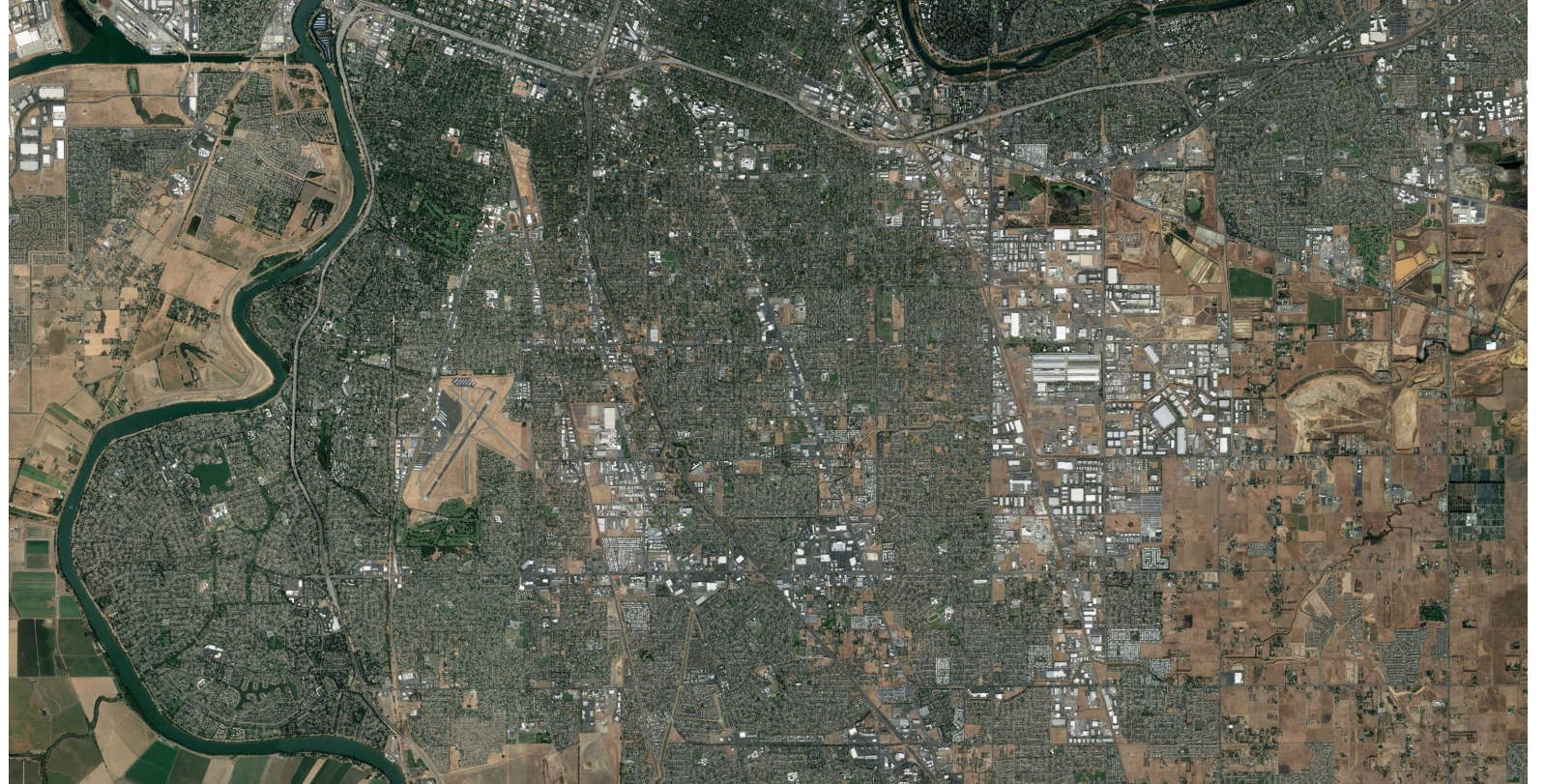
Each Community Plan will include:

- Community Vision
- Community Profile
- Community Issues
- Land Use Designations
- Community Policies
- Opportunity Areas



WHAT WILL THE PLAN BE BASED ON?

- Demographic, geographic, and economic data
- Input from the community



PROJECT SCHEDULE

2020

2021

Feb Mar Apr May June July Aug Sept Oct Nov Dec Jan Feb Mar Apr May June July Aug Sept Oct Nov Dec Jan Feb

WE ARE HERE →

Master Environmental Impact Report Scoping Meeting



Community Outreach Round 1: Vision, Issues, Opportunities

Community Plan Area Workshops



Citywide Survey



Community Outreach Round 2: Options & Alternatives

Community Plan Area Workshops



Community Open Houses



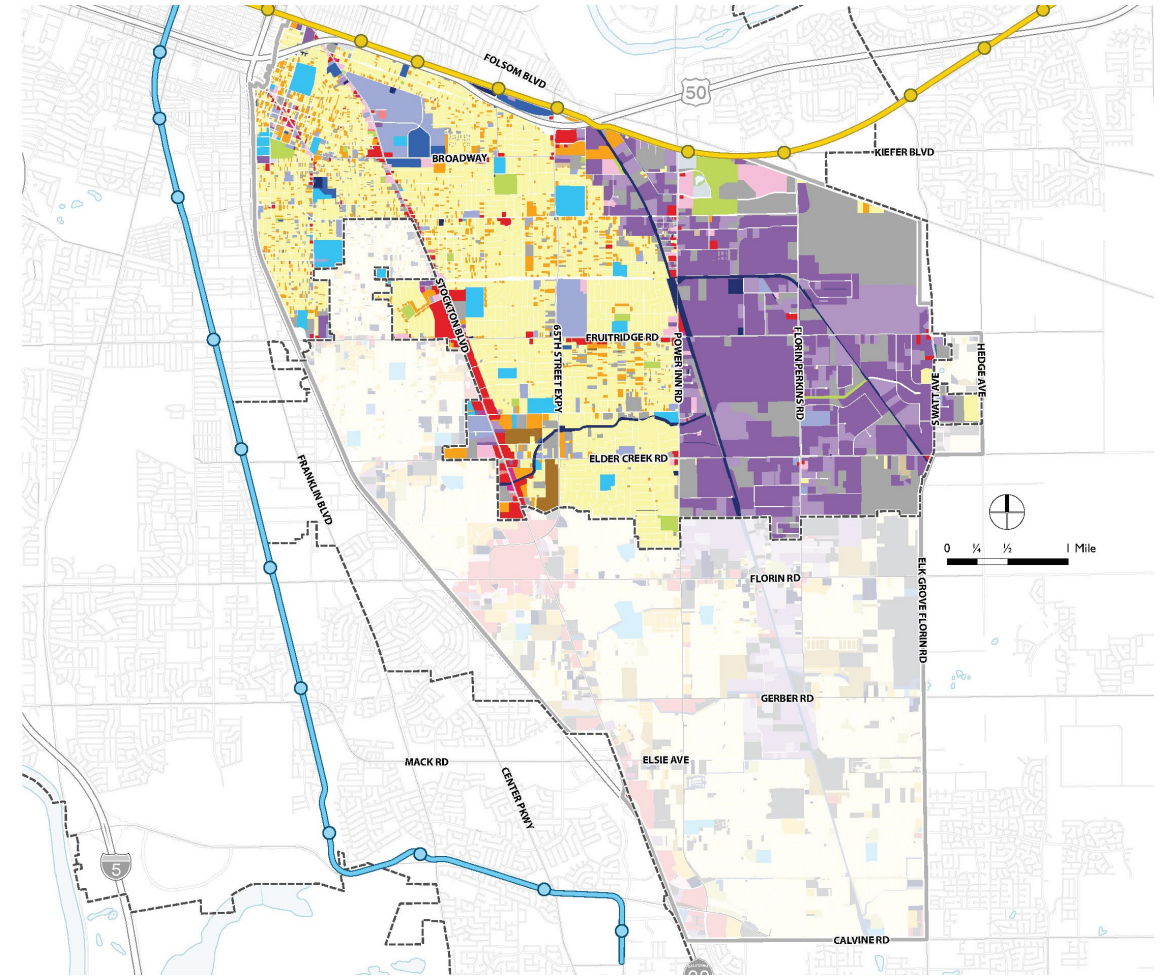
Public Hearings



FRUITRIDGE BROADWAY HAS:

- Housing (yellow and orange)
- Some commercial corridors (red)
- Large industrial area (purple)
- Vacant land (grey)

Existing Land



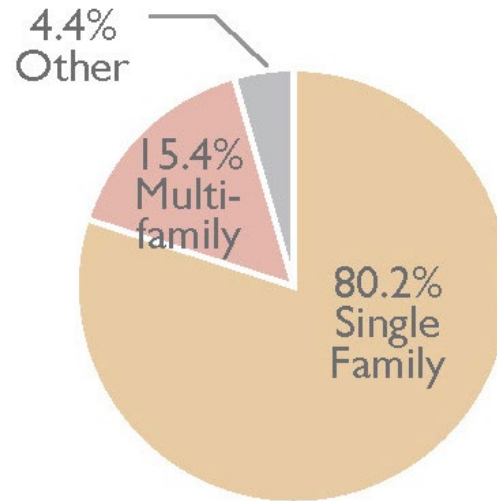
Existing Land Use		Existing Land Use		Existing Land Use		Existing Land Use	
Agricultural	Retail/Commercial	Industrial	Parking	Blue Line	Blue/Gold Line	Sacramento City Limit	Vacant
Single Family	Office	Public	Miscellaneous	Gold Line	Vacant	Community Plan Area Boundary	
Multi-family	Mixed Use	School	Utilities/Infrastructure				
Mobile Home	Light Industrial	Institutional	Vacant				
		Open Space/Recreational					

FRUITRIDGE BROADWAY HAS:

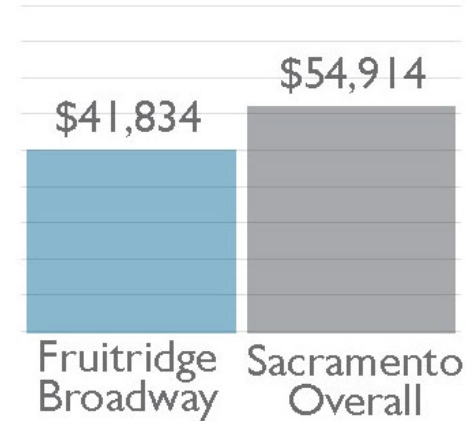
- A mix of single family and multi-family housing
- Median incomes and home prices slightly below the city-wide medians
- More jobs in trade/transportation/utilities and education/health

Economic Data

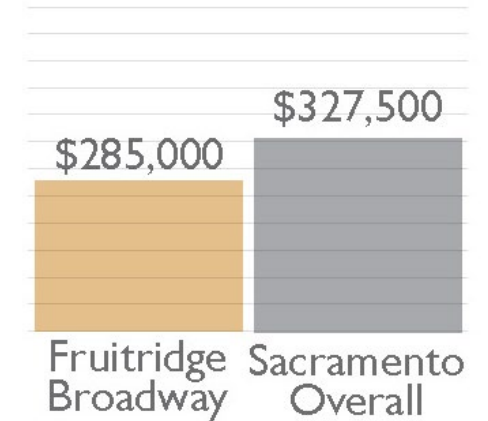
HOUSING TYPES



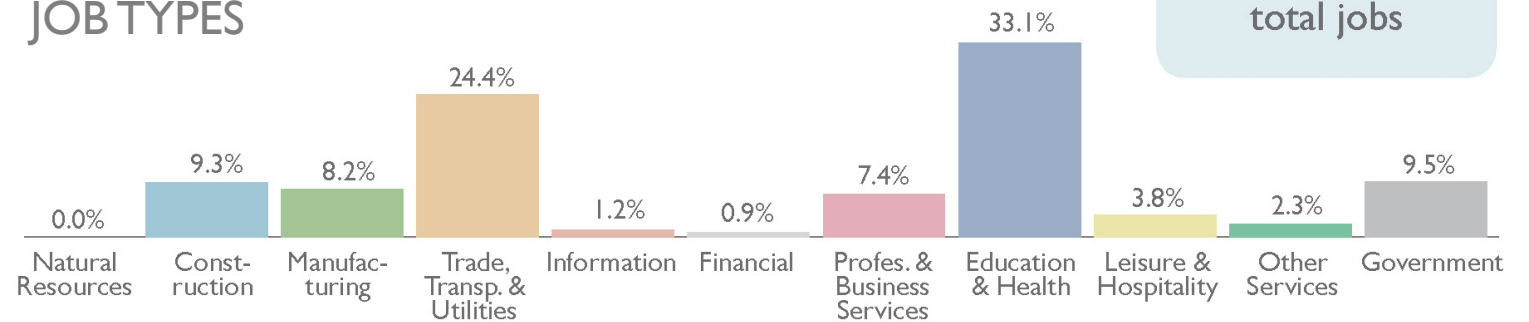
2018 MEDIAN ANNUAL HOUSEHOLD INCOME



2018 MEDIAN HOME SALE PRICE



JOB TYPES

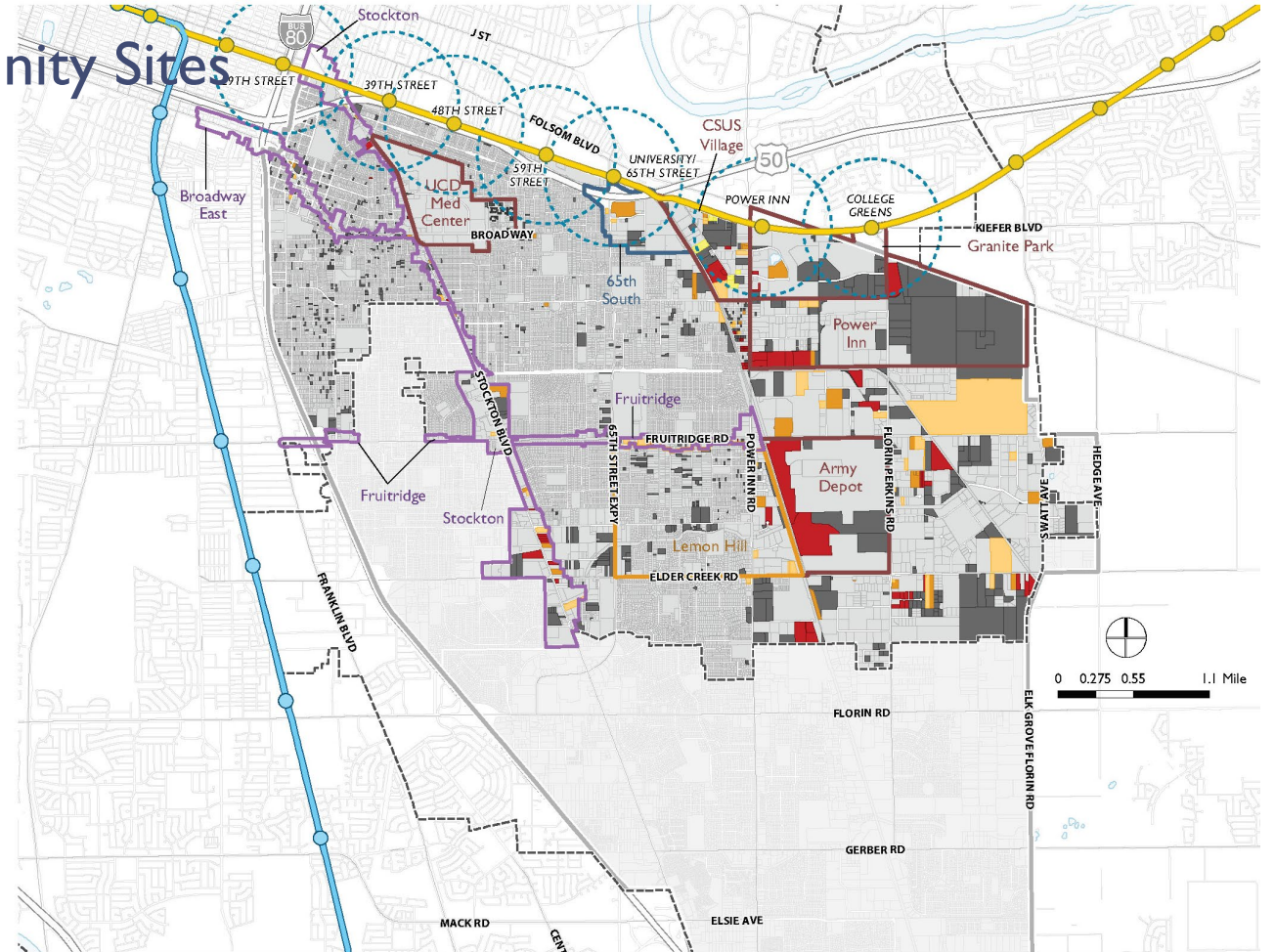



42,018
total jobs

THERE ARE OPPORTUNITY SITES:

- In vacant parcels
- In underutilized lands
- Near transit stops

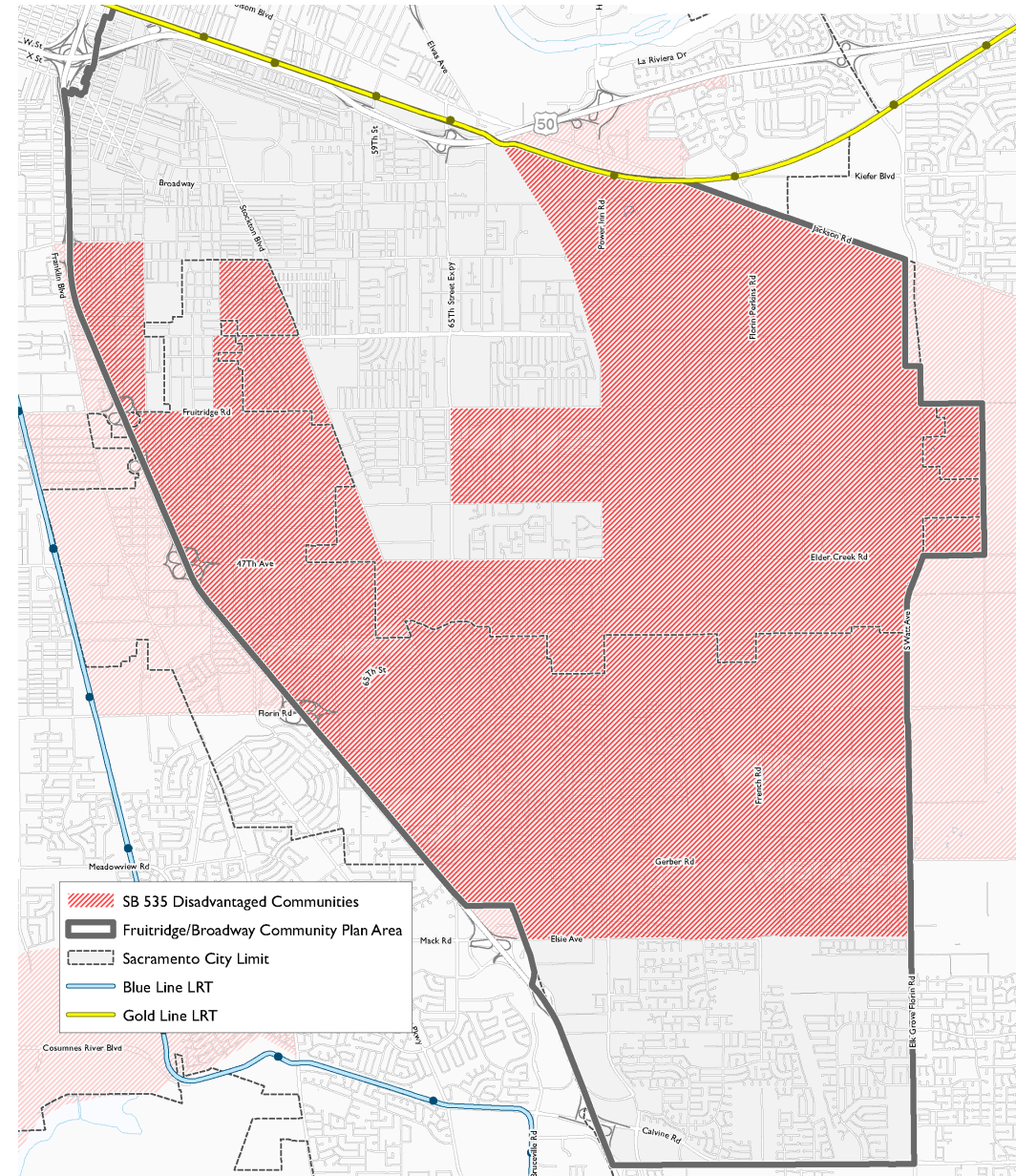
Opportunity Sites



OPPORTUNITY AREAS			
General Plan 2035	General Plan 2040	Underutilized	
Centers	Vacant	AV Ratio Less than or equals to 0.25	Blue Line
Corridors		AV Ratio Between 0.25 to 0.5	Blue/Gold Line
Neighborhoods		AV Ratio Between 0.5 to 0.75	Gold Line
Transit Center		AV Ratio Between 0.75 to 1.0 (For TOD Areas Only)	TOD Areas (Half Mile around Light Rail Stations)
			Sacramento City Limit
			Community Plan Area Boundary

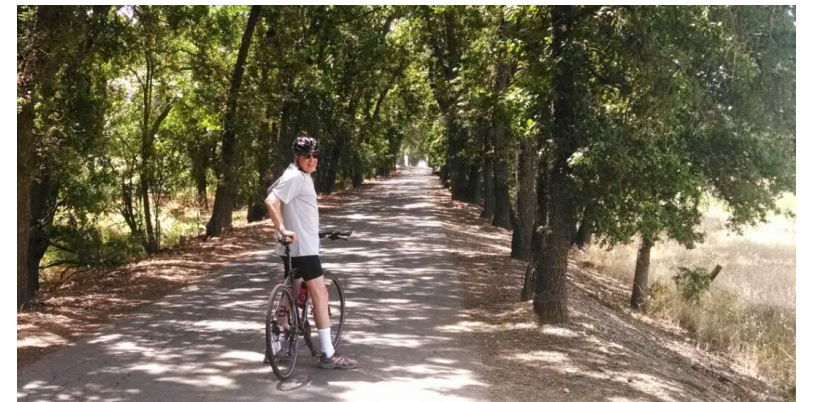
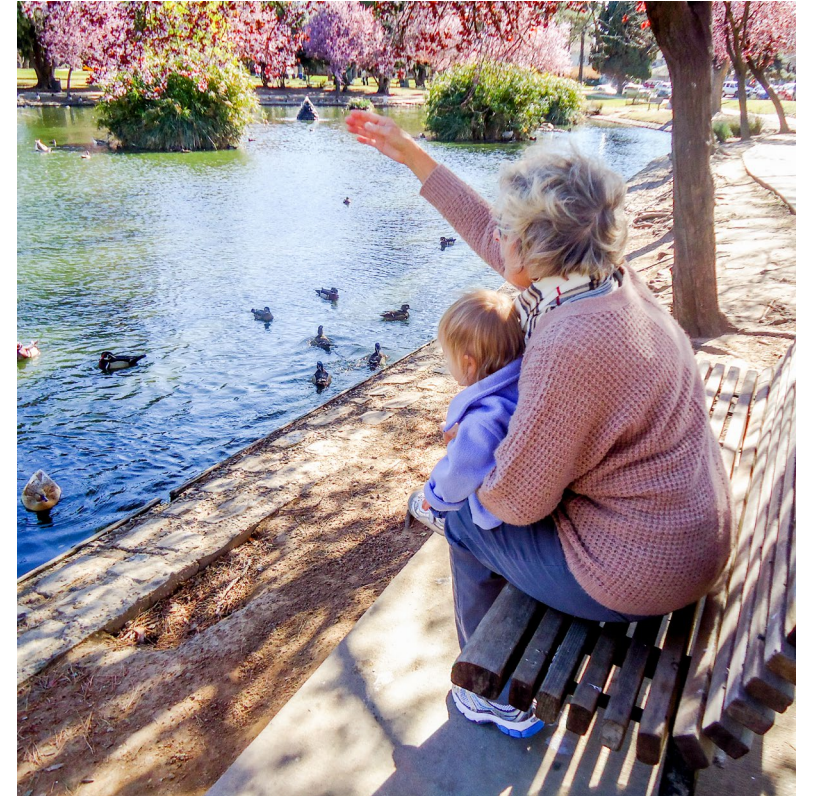
EXPOSURE TO ENVIRONMENTAL PROBLEMS

- Air quality
- Pollution
- Health risks
- Poverty



AGE-FRIENDLY COMMUNITIES

- Outdoor spaces and buildings
- Transportation
- Housing
- Social participation
- Respect and social inclusion
- Civic participation and employment
- Communication and information
- Community and Health services

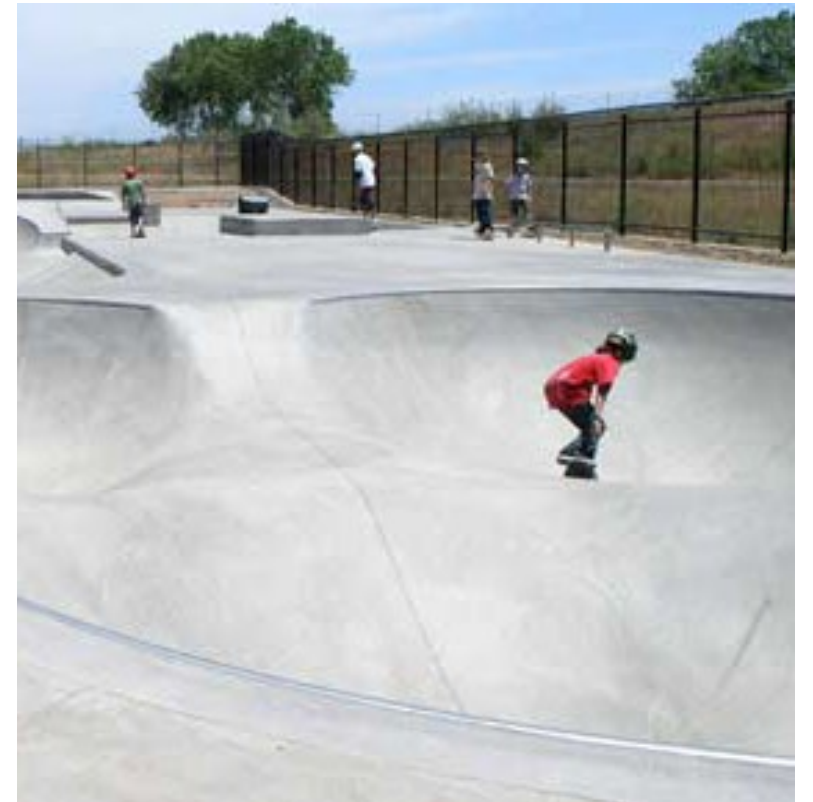




WHAT ARE THE ISSUES AND PRIORITIES FOR THE FRUITRIDGE BROADWAY COMMUNITY PLAN AREA?

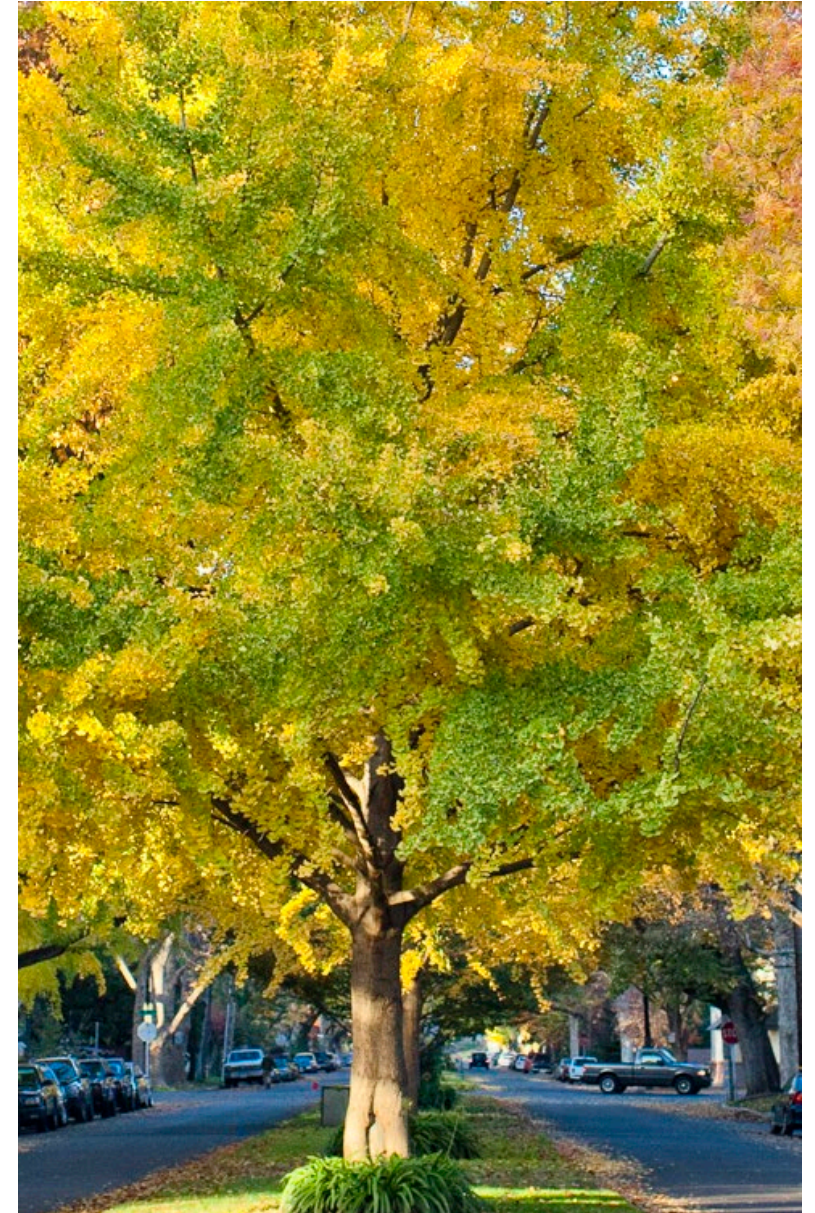
WHAT COMMUNITY ASSETS SHOULD WE BUILD ON?

- Gathering spaces?
- Local businesses?
- Community qualities?



WHAT WOULD YOU LIKE TO SEE CHANGE? WHAT'S MISSING?

- Housing?
- Food access?
- Green spaces?
- Safety?
- Climate action?
- Inclusiveness?
- Economic opportunities?

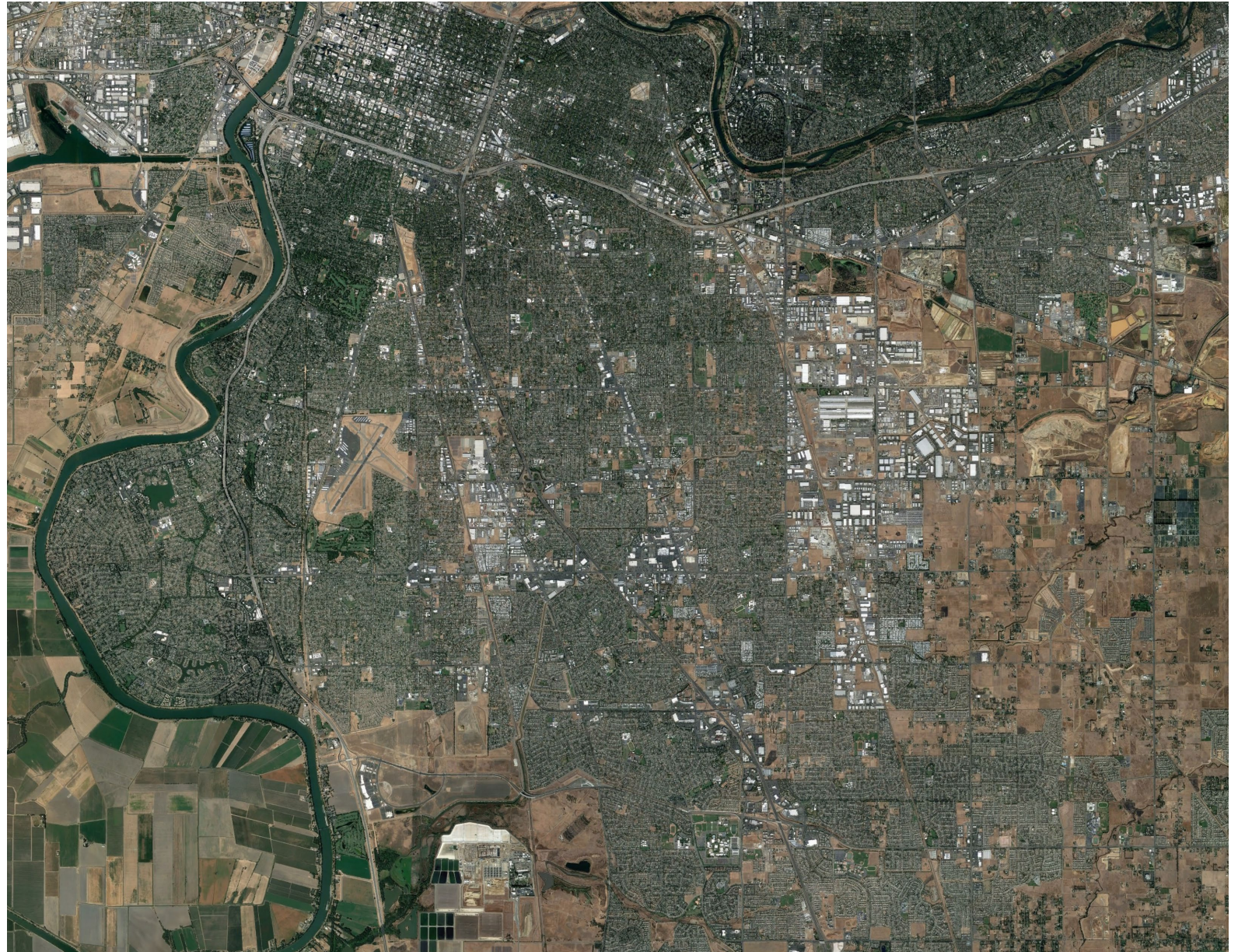


ARE THERE BARRIERS TO GETTING AROUND?

- Transit access?
- Walking and biking infrastructure?
- Safety for all ages and abilities?



WHAT'S YOUR
VISION FOR THE
FUTURE OF
FRUITRIDGE
BROADWAY?





TONIGHT'S ACTIVITY

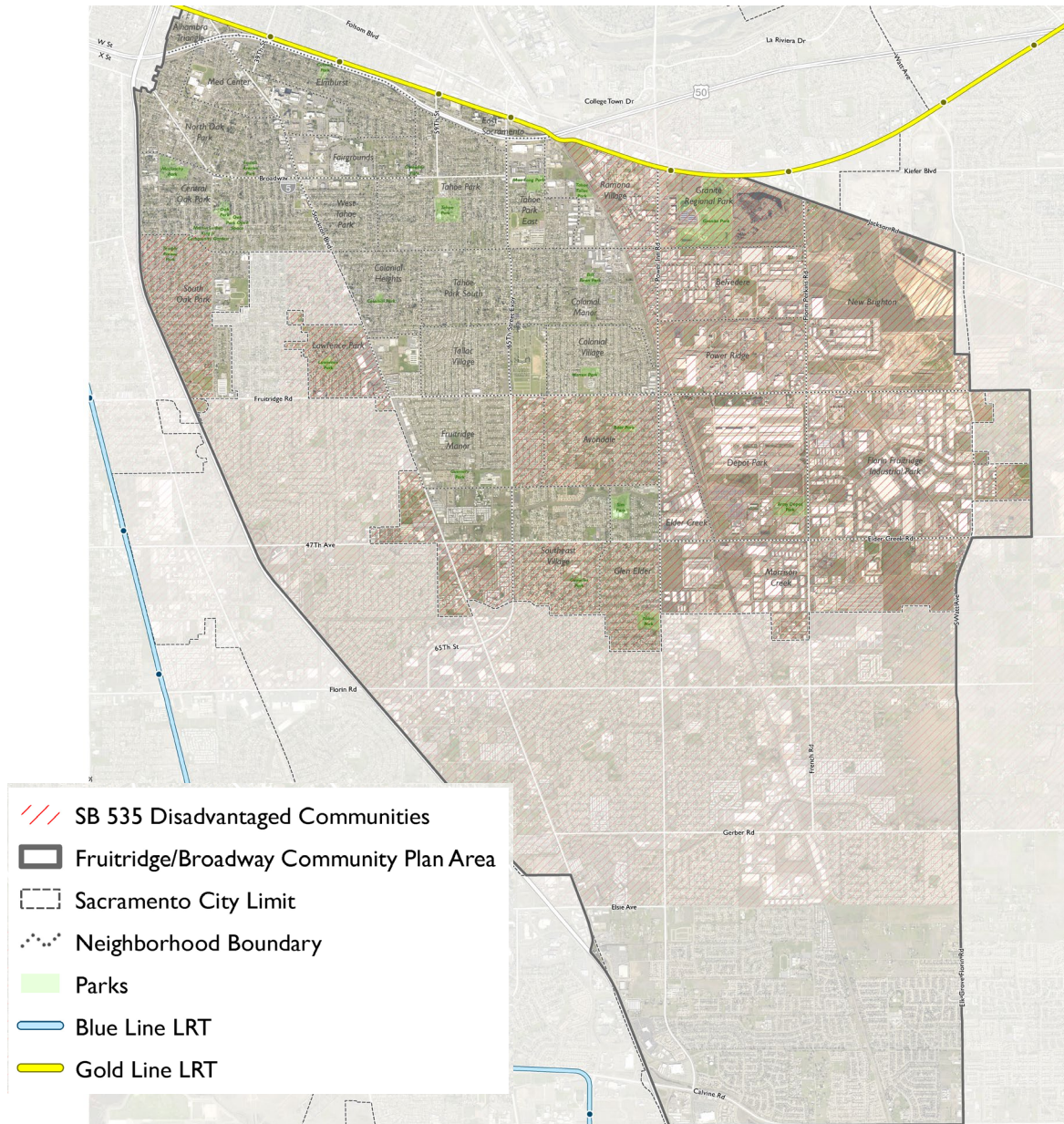
WE WANT TO HEAR FROM YOU:

- What are the issues and opportunities for Fruitridge Broadway?

1. Which places in your neighborhood make the biggest contribution to the community?
2. Which areas would you like to see change over the next 10-20 years?
3. What barriers or obstacles are there to getting around in your neighborhood?
4. What headline should describe the Fruitridge Broadway Community Plan Area on the cover of Sacramento Magazine in the year 2040? What images would accompany the article?

REPORT BACK:

- What were the key points of discussion at your table?





WHAT ARE THE NEXT STEPS?

STAY ENGAGED

- Subscribe to our mailing list tonight or online at:
sac2040gpu.org
- Contact:
Matt Hertel, Senior Planner, City of Sacramento
(916) 808-7158
mhertel@cityofsacramento.org

