

City of Sacramento General Plan Update South Natomas Community Plan Area Meeting

Project Overview

The 2040 General Plan is the City’s blueprint for how and where Sacramento will grow over the next 20 years. It contains policies that guide everything from transportation, to the type of homes available, to jobs, entertainment, public safety and much more.

In 2018, the City initiated an update to the General Plan to ensure it remains responsive to the challenges of the coming years. In parallel, the City will also be preparing an ambitious Climate Action Plan that outlines a community-wide framework for reducing greenhouse gas emissions and establishes Sacramento as a climate leader.

Meeting Purpose, Format and Location

The Sacramento General Plan includes 10 community plans that identify and address local issues and opportunities in our neighborhoods. South Natomas community members were invited to provide input that would refine their community plan to ensure that it reflects local priorities.

The community meetings were structured in a small working-group format, beginning with a welcome/ice breaker and a brief presentation.

In addition to providing feedback through the working groups, community members were also encouraged to provide comments on comment cards.

The South Natomas Community Plan Area meeting was held on Wednesday, June 12, 2019 at Natomas High School from 5:30 p.m. to 7:30 p.m. More than 25 community members attended the meeting.



Andrew Hill, Project Manager from Dyett & Bhatia, giving the opening presentation

To start the meeting, participants engaged in a quick activity to get them thinking about their neighborhood. Through a live polling exercise, participants responded to “In one word or phrase, describe what you’d like your neighborhood to be like in 2040.”



Andrew Hill, Project Manager from Dyett & Bhatia, presented an overview of the General Plan Update process, provided in-depth information about the South Natomas Community Plan, including previously identified assets, issues and priorities, and introduced community members to the break-out group activity.

Small Working Groups

Working in groups of 5-7, participants were asked to complete a map-based activity answering a series of questions that built upon one another.

The questions and the component of the community plan they will inform are described below in the table:

Question	Providing input for
What places in your neighborhood make the biggest contribution to livability and community character?	Community assets map
What areas would you like to see change over the next 10-20 years and how should they change?	Land use designations; policies/actions that address local issues/opportunities
What barriers or obstacles are there to getting around your neighborhood?	Policies/actions that address local issues/opportunities
What issues and opportunities should be considered as the County plans for the development of the nearby Upper Westside Specific Plan?	Policies/actions that address local issues/opportunities

Magazine covers: Imagine the South Natomas community plan area is being showcased on the cover of “Sacramento Magazine” in 2040. What images would accompany the article?

Vision statement

A table facilitator and recorder captured the conversation and input provided by participants.

At the end of the group activity, one representative from each group reported out to the full group on the key points of the discussion at their table.

Below are the responses collected by the table recorder and facilitators:

Key Themes

The six groups mutually identified the need for alternative transportation options in the South Natomas area. Group members suggested more frequent transit service, as well as, additional connections to Downtown as potential areas for improvement. The groups also agreed that the community plan should focus efforts on the development of affordable housing and the expansion and maintenance of parks, as well as community centers. Other common themes included: support for small businesses, safety improvements for bicyclists and pedestrians, and the desire to maintain the diversity and feeling of inclusivity within South Natomas.



Community members participating in the small group activity

Group 1

Group 1 found that the main contributors to livability and community character are the local parks with an abundance of trees and pedestrian and cycling pathways. South Natomas’ proximity to Downtown and to the Sacramento airport makes it a location a “gem,” but community members are concerned about the lack of transportation options to and from these major areas. They would like to see less emphasis on car travel and more accessible transit systems such as light rail or bus. Group 1 members also expressed that South Natomas is a relatively affordable place to live in Sacramento and the need for it to remain that way.

In the next 10-20 years, Group 1 expressed the need for more public transit options and shuttle services such as the North Natomas TMA, Jibe, for their communities.

There is also a need to create more opportunities for smaller businesses to thrive and to create more community-based organizations that help build a strong sense of community. Safety in public spaces is an issue that could be solved by more efficient and effective enforcement.

Group 1 would like to see improvements to roads and major highways. Pollution along the American River Parkway is also an issue that needs to be addressed in order to preserve the nature that surrounds the area.

Disparity between neighborhoods, specifically regarding the homeless population, was also an issue raised by Group 1 members.

Group 1 stressed the importance of having the Upper Westside Specific Plan be as accessible as possible for all residents to enjoy. Additionally, they want to improve traffic congestion, while preserving land and open space in the area.

Group 1's vision for South Natomas in 2040 is a community that is inclusive, artistic, and innovative. They would like future developments and amenities to be clean, safe, and efficient to allow for economic development to thrive in this area.

Group 2

Group 2 is grateful for local contributors to their neighborhood such as the community garden, access to great food vendors, and Discovery Park events. With that said, Group 2 would like to see improvements made to allow for safer pedestrian crossings and pathways across the river. They also expressed the need for energy efficient buildings, affordable housing, and access to clean water.

They would also like to see more options for professional development and growth for younger generations. One suggestion was to offer resources and technical classes in business or computer programming and coding at local high schools and community centers.

Barriers to getting around South Natomas included not enough pedestrian crossings, a lack of public transit options, and not enough shareable bikes and scooters. The 2040 plan should provide easy access across the river from South Natomas to downtown Sacramento for vehicles, pedestrians, and cyclists.



Group members identifying assets within the community

As the County plans for the development of the nearby Upper Westside Specific Plan, future traffic and population growth should be considered when developing transportation roads and pathways. There should also be consideration given to enhancing the transportation options to Downtown and other public areas surrounding South Natomas. Affordable housing should also be a component of the Plan.



*Remi Mendoza, Associate Planner for the City of Sacramento
facilitating the group activity*

If the South Natomas Community Plan Area was being showcased on the cover of “Sacramento Magazine,” Group 2 would love to see pedestrians walking or biking safely across Truxel Road, increased diversity, a reduction in crime, and a poverty free community.

Group 3

The places in Group 3’s neighborhood that make the largest contributions to their community are the Stanford Settlement, Doyle pool, the South Natomas Community Center, Sandy Cove Beach, the Arden Arcade connector, and local schools.

Group 3 would like to see improvements made to the green space along the Garden Highway and more travel pathways/options in and out of South Natomas. Residents would like discounts at local recreational areas and more affordable housing options in new developments. Public art and murals are lacking in their community and Group 3 would like to see abandoned or old buildings restored into innovative spaces for people of all ages and backgrounds. Lastly, Group 3 would like to see more community events in their neighborhood such as “Celebrate Natomas.” Events help bring community members, local organizations, and businesses together.

Group 3 would like to see more connections across the river for residents and visitors, when trying to get around the neighborhood. The group would also like to see a more comprehensive reassessment of the bus lines and a price reduction for monthly bus passes.

Group 3 agreed that affordable housing needs to be a requirement for the development of the nearby Upper Westside Specific Plan. The plan should also consider accessible travel options for pedestrians, cyclists, and vehicles. The group expressed the need for over/underpass connections on I-80 to connect the new development to the rest of the community.

Group 3’s 2040 vision for South Natomas depicts a community that is diverse, rooted in culture, is forward-thinking, and is preparing for the residents of tomorrow.

Group 4

Group 4 expressed their appreciation for community centers because they afford the opportunity for local neighbors and groups to convene and have fun. There is, however, a lack of coffee shop options and outdoor meeting spaces for residents to gather. Local grocery stores such as La Superior are major contributors to the community and make food accessible.

Over the next 10-20 years, Group 4 would like to see the following items become priorities when planning for South Natomas: affordable housing, improvements to traffic congestion, the creation of community centers and meeting spaces, more senior housing options, and creating destination centered areas to increase travel and tourism. They would also like to have better access to healthier foods with the addition of a Trader Joe's or Sprouts grocery store.

Group 4 would like to see safer and wider bike lanes near West El Camino, Northgate, and Truxel Road to allow for easy and safe travel for both pedestrians and cyclists. In addition, they would like more bus routes that go directly to Downtown to help improve overall traffic congestion and allow for more accessible transportation.

Group 4 is concerned that the Upper West Side development will impact the traffic along West El Camino and back up the I-80 ramp. The development should take into consideration planning for pedestrians and cyclists, as well as planning for more connections across the highway and El Centro.

Group 4 would like to see their community as having “character” with bright colored buildings, more community spaces, and an inviting atmosphere for people of all backgrounds. They'd like to see more businesses in order to encourage tourism and increase economic development. They want a vibrant community that would be inviting and would make people want to visit and stay in South Natomas for business, raising a family, or recreation.

Group 5

Group 5 expressed the biggest contributors to their neighborhood as being the South Natomas Community Center and Park. They identified the trail along Garden Highway as a great transportation option for those who walk or bike, and the Stanford Settlement Neighborhood Center as the main center for social service in South Natomas. Additionally, the Community Garden and Greenhouse off of Garden Highway near Ninos Parkway are great resources for kids and after school programs.

Group 5 envisions a community that has safe roads that is easily accessible to everyone. They would like to see serious crimes handled with more enforcement, thereby creating safer



Group members identifying obstacles and barriers to getting around their community

conditions for community members. The development of roads and main transportation hubs should be designed with the safety of users in mind. Affordable housing for all economic backgrounds, ages, and incomes should be made available. Additionally, there should be more hospital and health centers available for residents to improve wellness and promote job creation.

Group 5 stated that there are no community financing districts to fund transportation improvements. The lack of transportation options makes it difficult for residents and visitors to travel to South Natomas. Streetlighting also needs to be improved for safety.

Group 5's depiction of South Natomas on the cover of "Sacramento Magazine" in 2040 would include the oak trees and nature that surrounds the neighborhood, highlighting all the fun activities and festivals happening in the community of South Natomas.

Group 6

Group 6 described the biggest contributors to their community as being its proximity to Downtown, the community centers, local shopping centers, and their local parks and recreational spaces. The homeless population, however, is a huge concern for community members, and they would like to have more monitoring of the public places for the general health and safety of residents.



Community members participating in the small group activity

The improvement of sidewalks was a common thread amongst this Group, and they would like for the sidewalks to be built with safety in mind including the installation of more streetlights, more trees, and visible bike lanes. Also, developing other transit connections from Truxel to Downtown would improve transportation in the South Natomas community.

As the County plans for the development of the nearby Upper Westside Specific Plan, Group 6 think the amount of traffic and population growth needs to be considered. Group 6 would also like to see more options for traveling to and from South Natomas without the use of the highway.

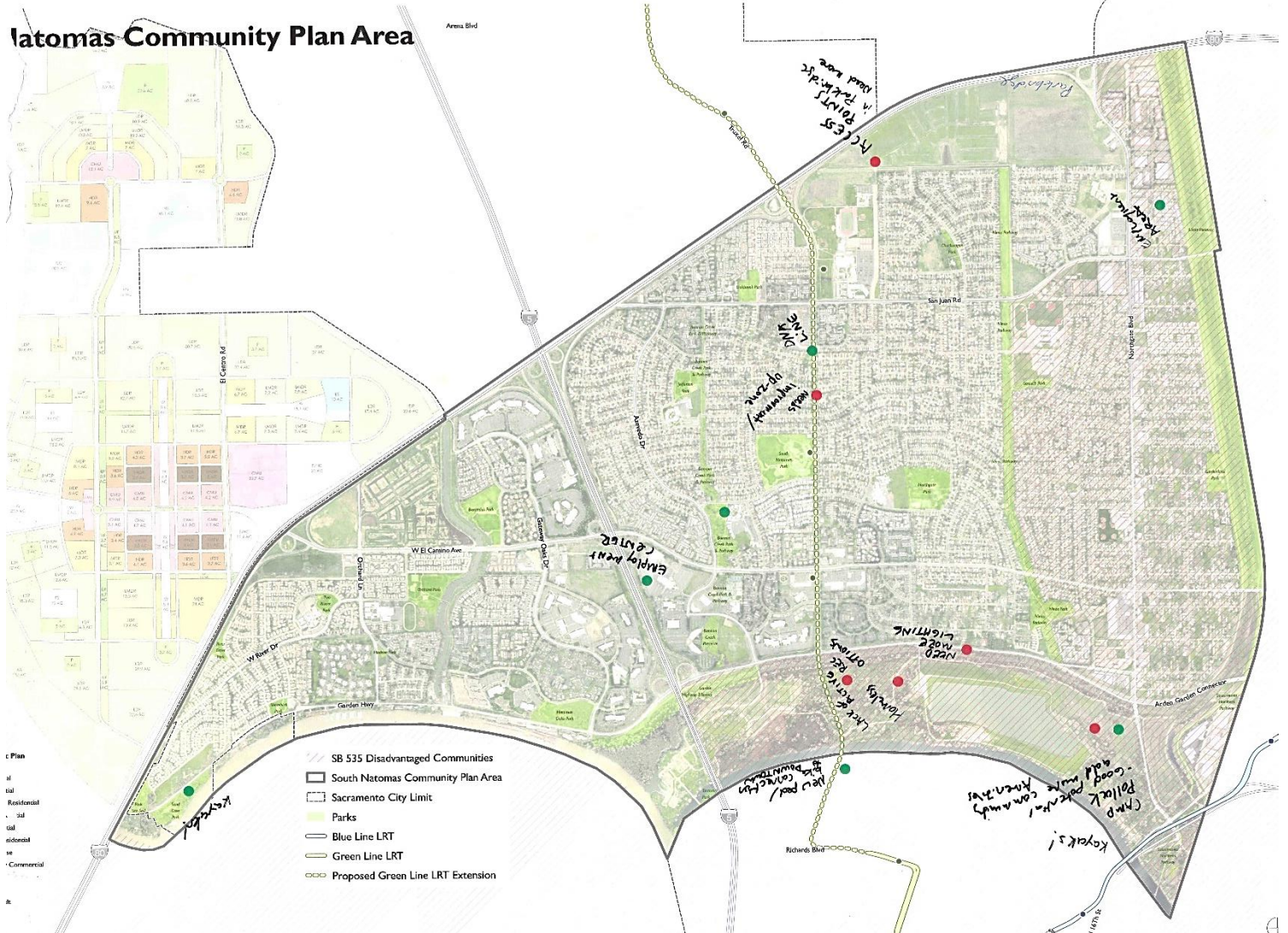
Group 6 envisioned a light rail system that would be accessible to all neighborhoods in South Natomas.

Comment Cards

Community members had the option to fill out a comment card to submit to the project team after the meeting was over. However, no comment cards were received after the South Natomas Community Plan Area Meeting.

Marked Table Maps

The below maps were used in the small group discussions. Attendees were asked to place green dots on assets to their community, such as a park, coffee shop, community gathering space, or place red dots on areas that need improvement. For example, areas where it is unsafe to cross the street.



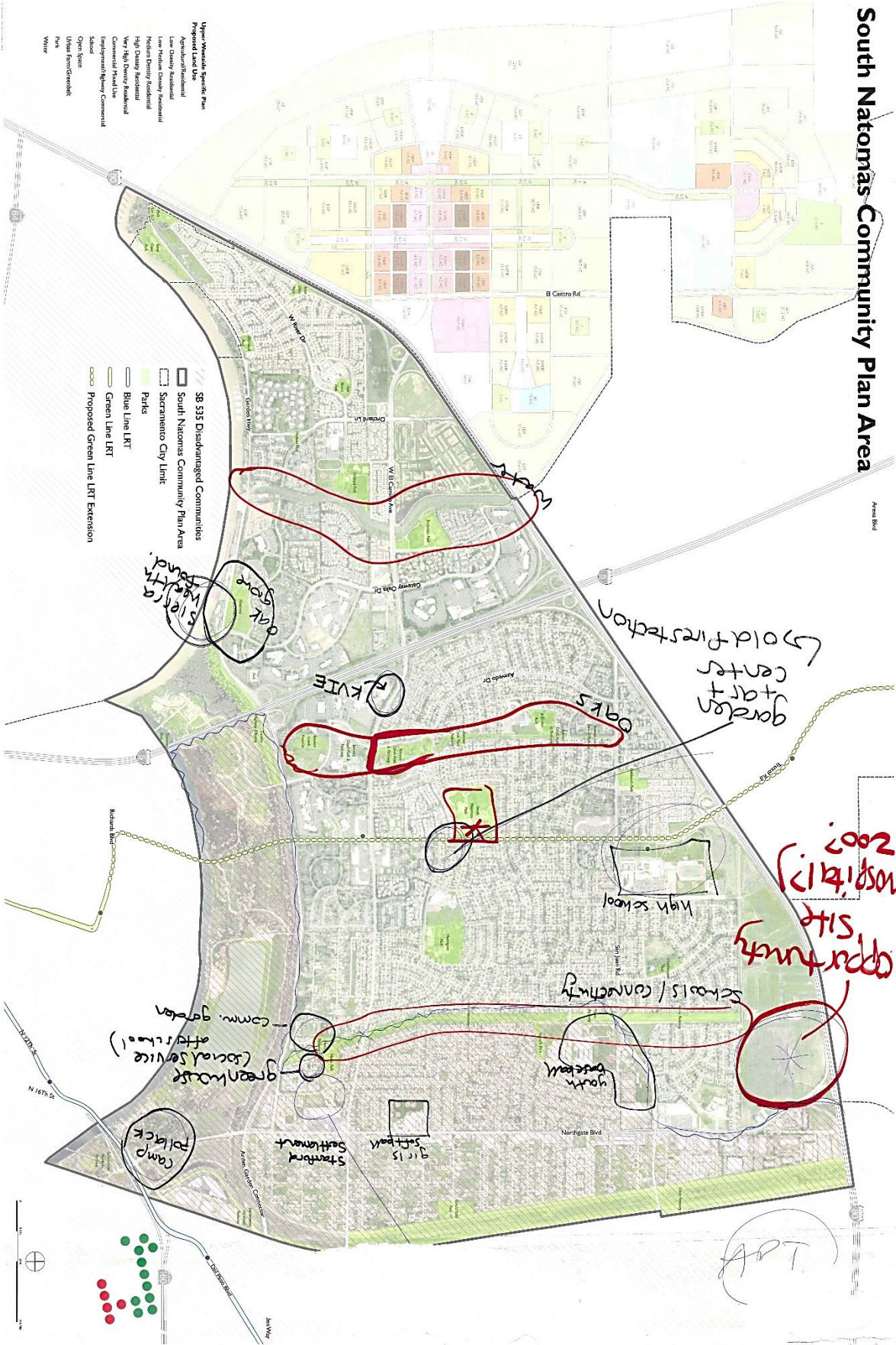
South Natomas Community Plan Area

Area 5B4



South Natomas Community Plan Area

Arroyo Blvd



- Upper Watershed Specific Plan**
- Proposed Land Use
 - Agribusiness/Industrial
 - Low Density Residential
 - Medium Density Residential
 - Neighborhood Commercial
 - Community Office
 - Community Retail
 - Community Employment
 - Community Industrial
 - Community Recreation
 - Community Open Space
 - Community Water

- SB 535 Disadvantaged Communities**
- South Natomas Community Plan Area
 - Sacramento City Limit
 - Parks
 - Blue Line LRT
 - Green Line LRT
 - Proposed Green Line LRT Extension



South Natomas Community Plan Area



Notification

An email notification and a subsequent reminder email were sent to more than 69,000 community members.

Fliers were posted at the following locations in the South Natomas Community Plan Area:

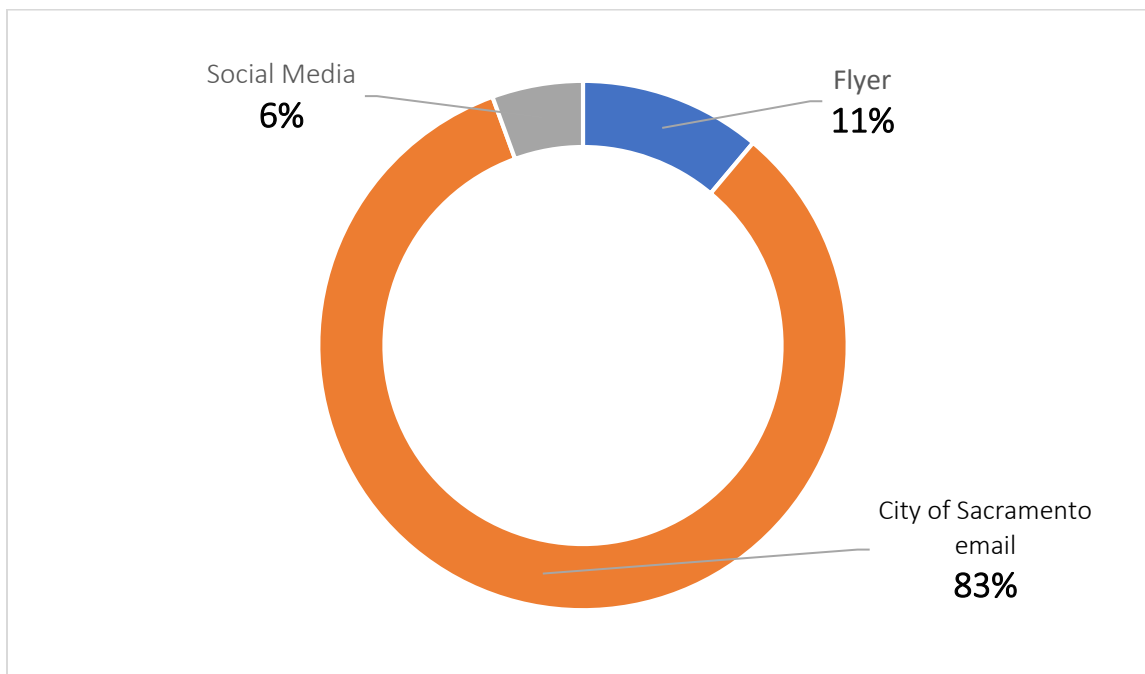
- South Natomas Library
- South Natomas Community Center

Below are some of the community leaders, community-based organizations, neighborhood associations, and local agencies who shared the workshop information on their media platforms or through e-newsletters.

- South Natomas TMA
- RD1000
- Natomas Homes and Lifestyle
- Natomas Gardenland History and News
- City of Sacramento Councilmember's Social Media/E-Blast: Councilmembers Harris, and Hansen
- Sacramento365

A news release including information about the workshops was sent to the City of Sacramento's media distribution list.

Attendees were asked to share how they heard about the events. Below is a summary of their responses:



Appendix

- Notification flyer
- Presentation
- Comment card



Help Shape the South Natomas Plan

Wednesday, June 12, 2019

5:30 - 7:30 p.m.

Natomas High School Multi-Purpose Room
3301 Fong Ranch Road, Sacramento

The Sacramento General Plan includes 10 community plans that identify and address local issues and opportunities in our neighborhoods.

We need your input to refresh the community plans and ensure they reflect local priorities. Join us for a community workshop to help shape the South Natomas Plan on Wednesday, June 12.

Be sure to arrive by 5:30 p.m. and plan to stay until 7:30 p.m.

Meeting agenda

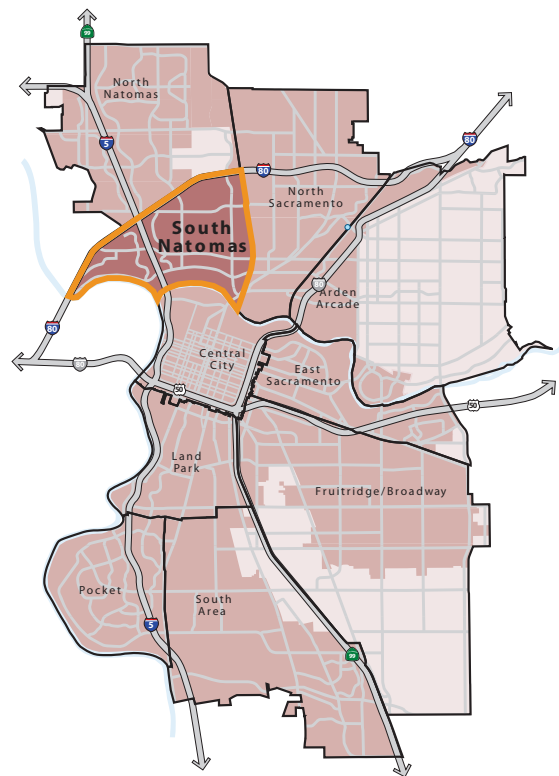
5:30 p.m. Welcome + live polling exercise

5:40 p.m. Presentation

6:10 p.m. Group activity

7:10 p.m. Wrap-up

There will be food and a children's activity, so please **RSVP** (requested, but not required) bit.ly/SouthNatomasCP



SouthNatomasPlanArea,highlightedinorange

For reasonable accommodation needs due to a physical disability that may hinder your participation, please contact the City's ADA Coordinator directly at (916) 808-8795.

Do you require translation to another language? Please let us know at least one week before the meeting.

CALL 311 我們講中文 • Hablamos español • Мы говорим по-русски • ພວກເຮົາເວົ້າພາສາລາວ • Peb hais lus Hmoob • Chúng tôi nói tiếng Việt

More information can be found online at www.sac2040gpu.org

Questions? Contact kdurham@aimconsultingco.com

SOUTH NATOMAS

COMMUNITY PLAN AREA WORKSHOP

sacramento | **2040**



ICE BREAKER

www.menti.com

Enter code: 89 01 07

1. In one word or phrase, describe your neighborhood today.
2. In one word or phrase, describe how you'd like your neighborhood to be in 2040.

AGENDA

- Welcome / Ice Breaker
- Opening presentation
 - What is Sacramento | 2040 ?
 - What are Community Area Plans?
 - South Natomas Assets, Issues, and Priorities
 - Activity Introduction
- Table activity
- Report Back
- Next Steps

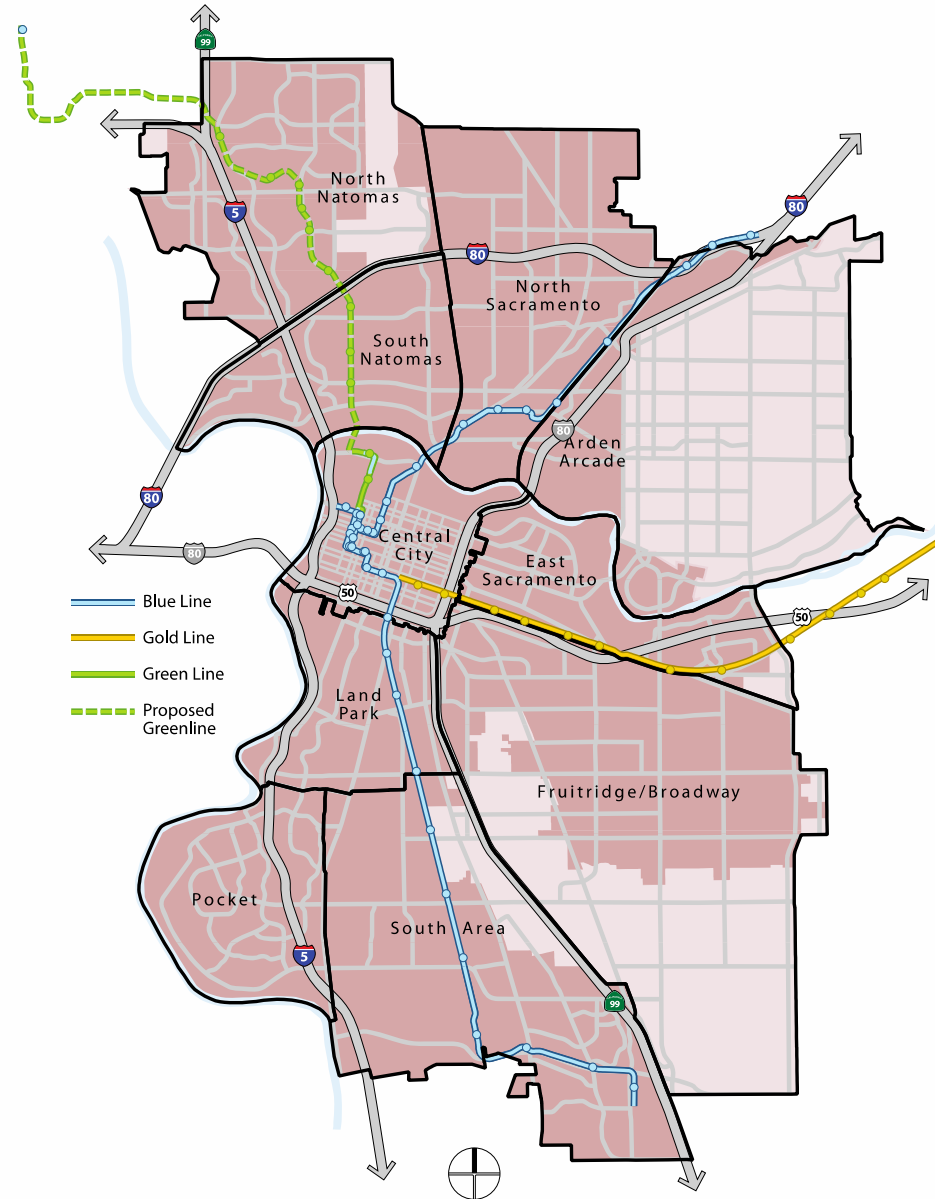




WHAT IS SACRAMENTO | 2040?

WHAT IS SACRAMENTO | 2040?

- Updates for key long-range planning documents:
 - Climate Action Plan
 - General Plan
 - Community Plans



WHAT IS A GENERAL PLAN?

- Blueprint for urban development and preservation
- Provides a 20-year framework for Sacramento's future

Sacramento's General Plan will address:

- Land Use & Urban Design
- Historic & Cultural Resources
- Economic Development
- Housing
- Mobility
- Utilities
- Education, Recreation & Culture
- Public Health & Safety
- Environmental Resources
- Environmental Constraints
- Environmental Justice

WHAT IS A CLIMATE ACTION PLAN?

- Roadmap for reducing a city's GHG emissions and adapting to climate change

Sacramento's Climate Action Plan will include:

- Inventory of current emissions
- Greenhouse gas targets and forecasts
- Greenhouse gas mitigation measures

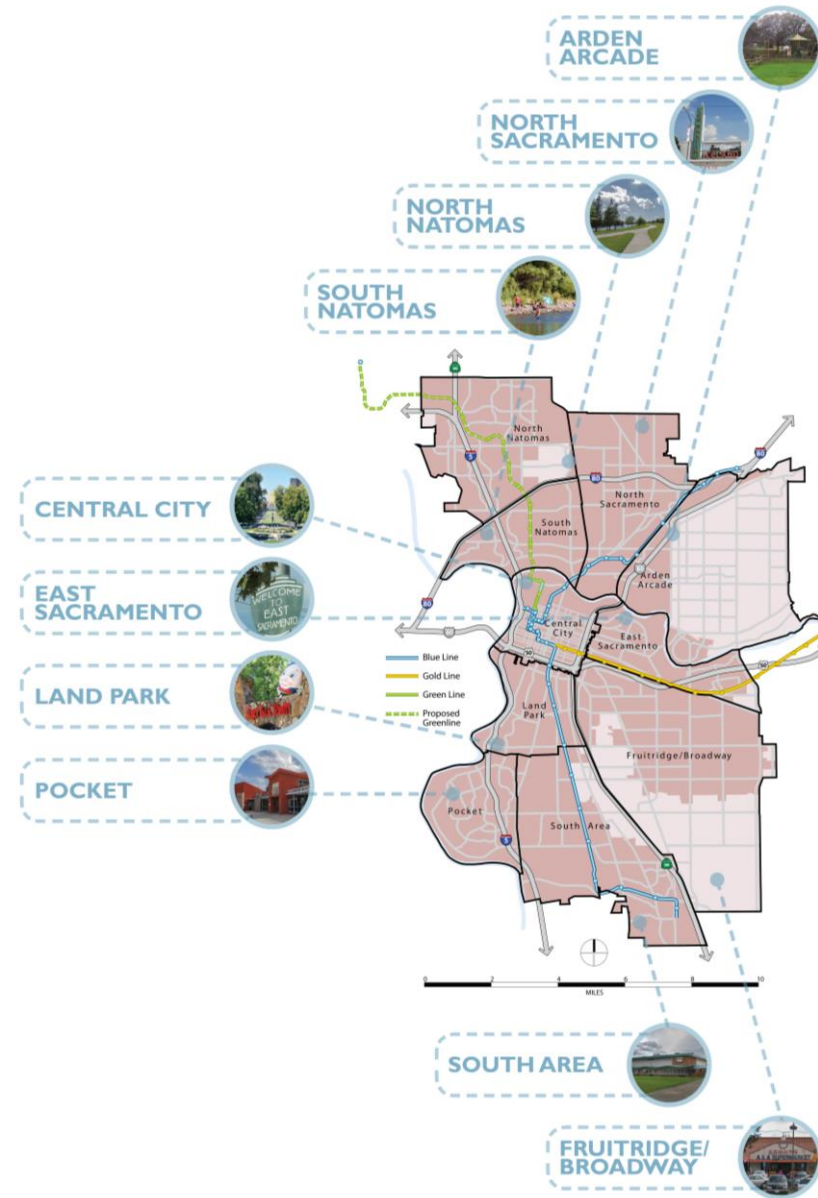




WHAT ARE COMMUNITY PLANS?

WHAT IS A COMMUNITY PLAN?

- Community Plans include specific policies that are localized and unique to Sacramento's different community areas



WHY ARE WE UPDATING THE PLANS?

- Many of the Community Plans are outdated, and have different levels of detail
- The updated plan will reflect community priorities identified through the engagement process

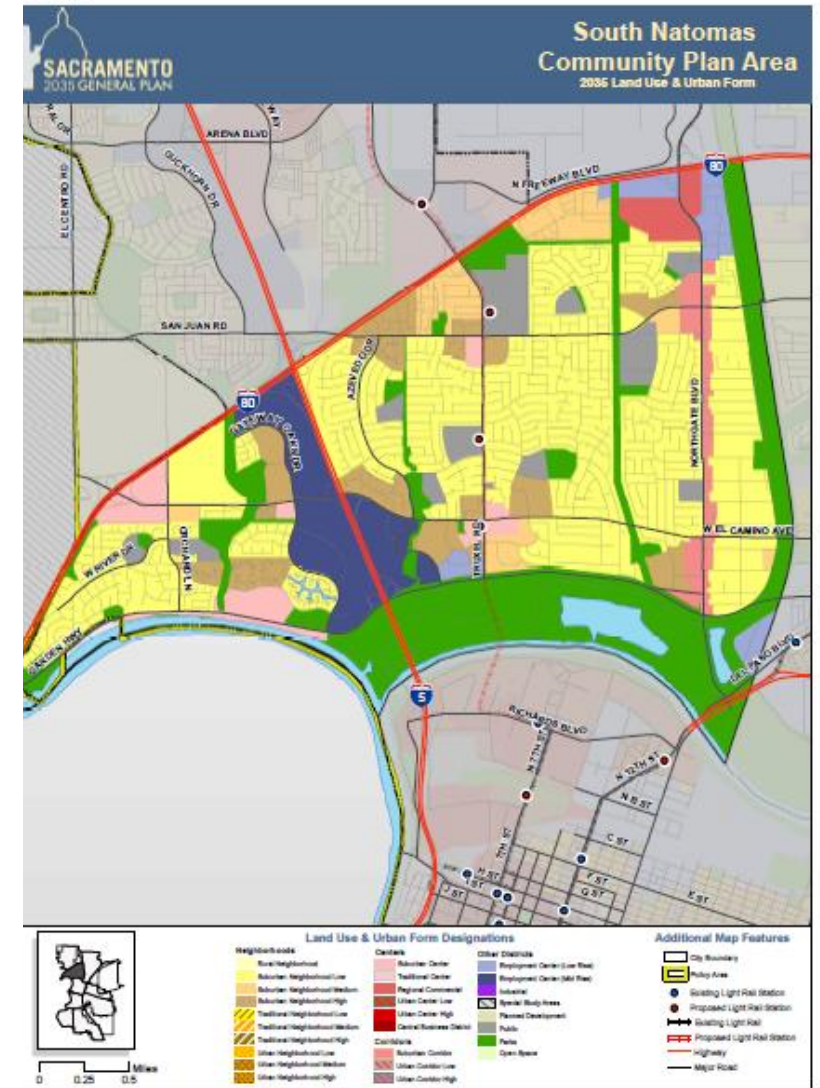
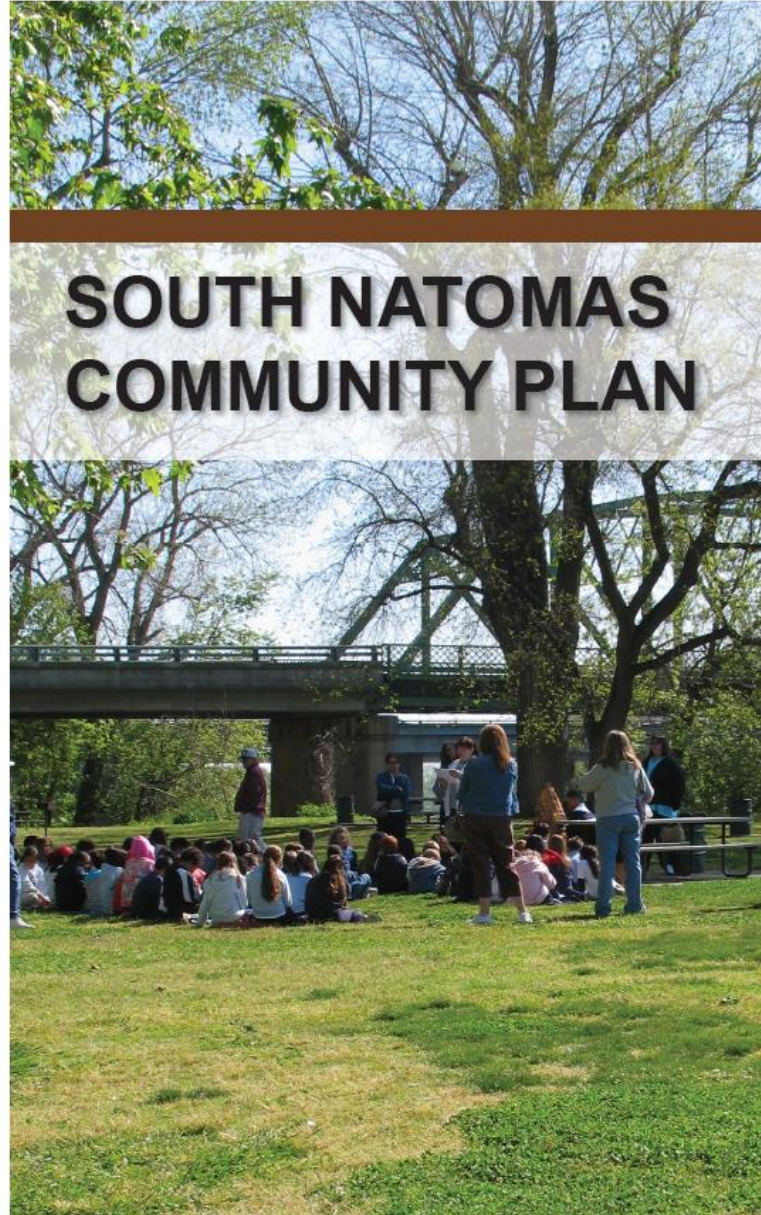


Figure SN-2
 2035 General Plan Land Use & Urban Form Designations
 for the South Natomas Community Plan Area

WHAT IS IN A COMMUNITY PLAN?

Each Community Plan will include:

- Community Vision
- Community Profile
- Community Issues
- Land Use Designations
- Community Policies
- Opportunity Areas

WHAT WILL THE PLAN BE BASED ON?

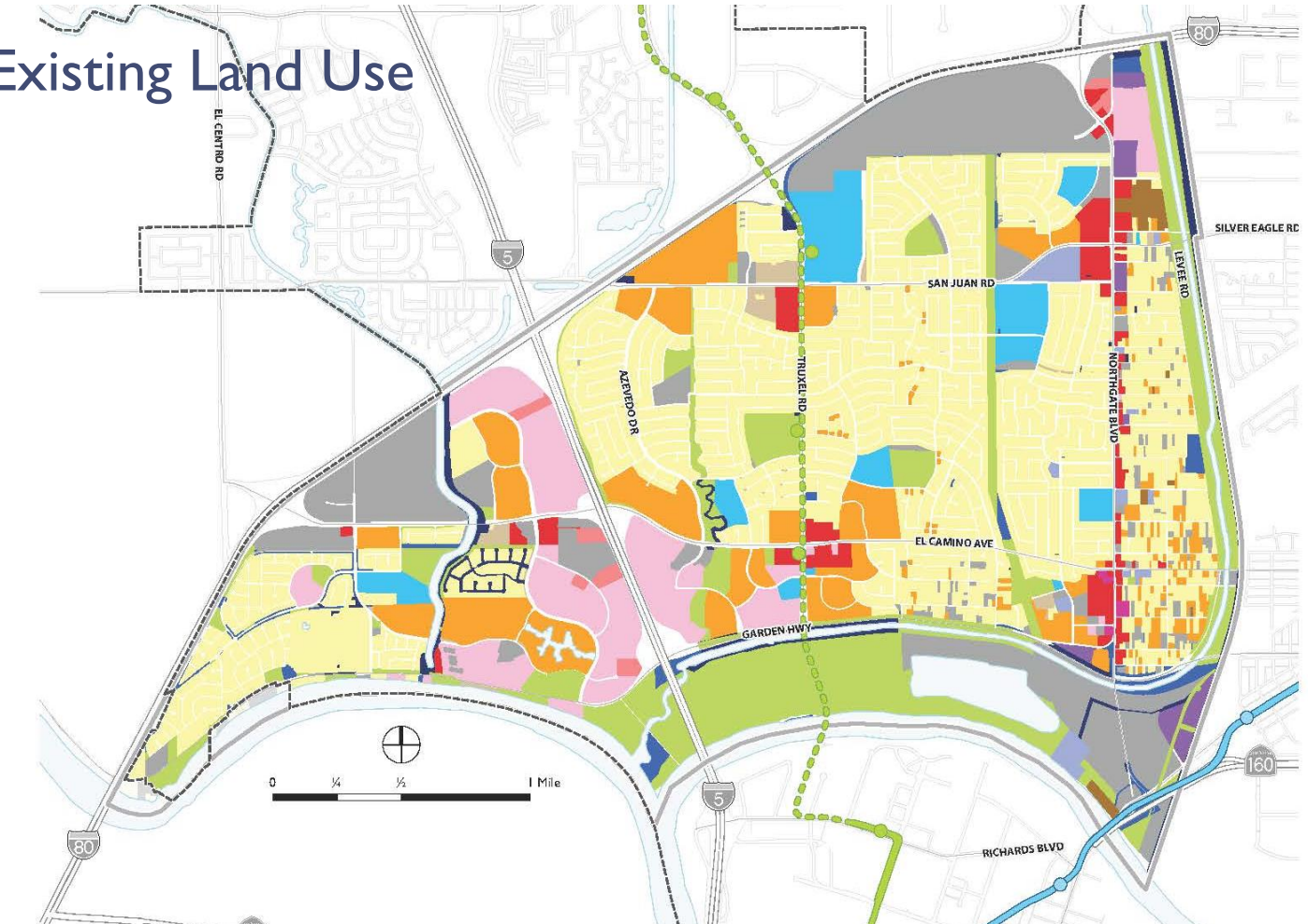
- Demographic, geographic, and economic data
- Input from the community



SOUTH NATOMAS HAS:

- Housing (yellow and orange)
- Some commercial corridors (red)
- Large office areas (pink)
- Parks throughout (green)
- Vacant land (grey)

Existing Land Use



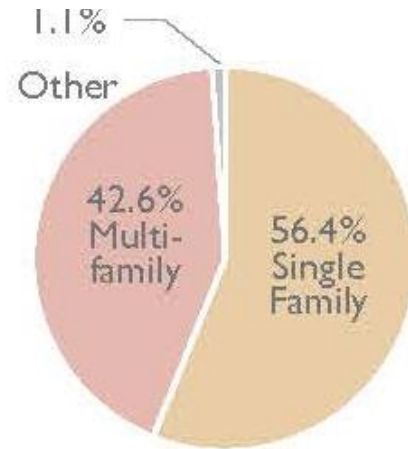
Existing Land Use		Blue Line	
Single Family	Retail/Commercial	Industrial	Blue Line
Multi-family	Office	Public	Green Line
Mobile Home	Mixed Use	School	DNA-Green Line
		Institutional	Sacramento City Limit
		Vacant	Community Plan Area Boundary
		Open Space/Recreational	
		Miscellaneous	
		Utilities/Infrastructure	

SOUTH NATOMAS HAS:

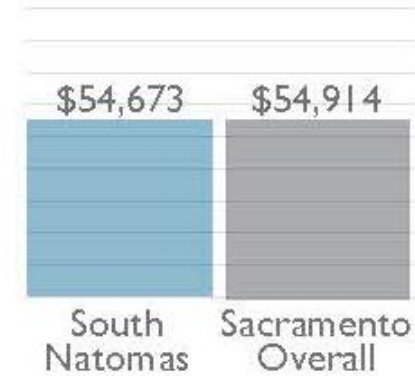
- A mix of single family and multi-family housing
- Median incomes and home prices close to the city-wide medians
- More jobs in professional/business services or government

Economic Data

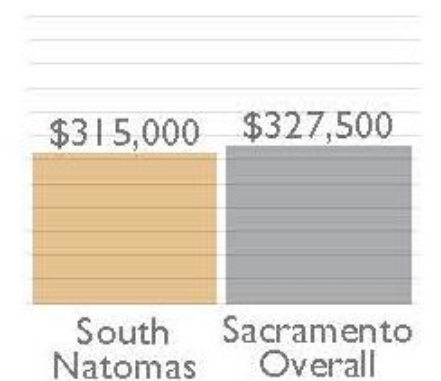
HOUSING TYPES



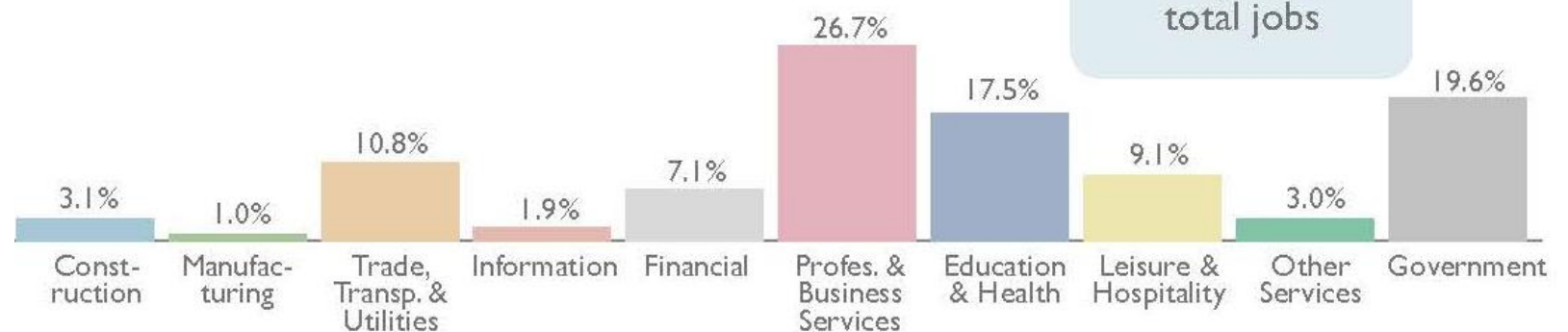
2018 MEDIAN ANNUAL HOUSEHOLD INCOME



2018 MEDIAN HOME SALE PRICE



JOB TYPES

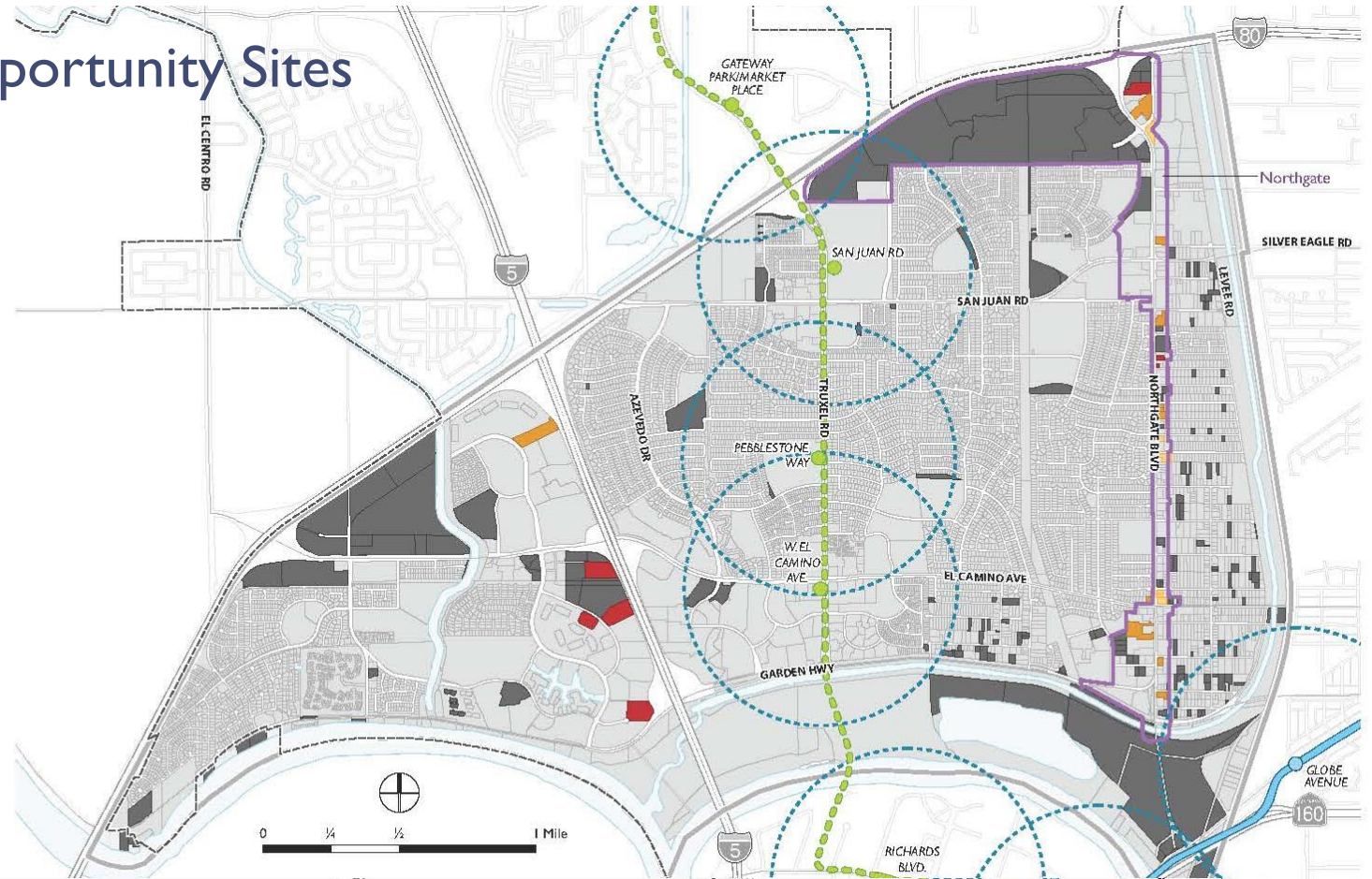



14,123
total jobs

THERE ARE OPPORTUNITY SITES:

- In vacant parcels
- In underutilized lands
- Near transit stops

Opportunity Sites

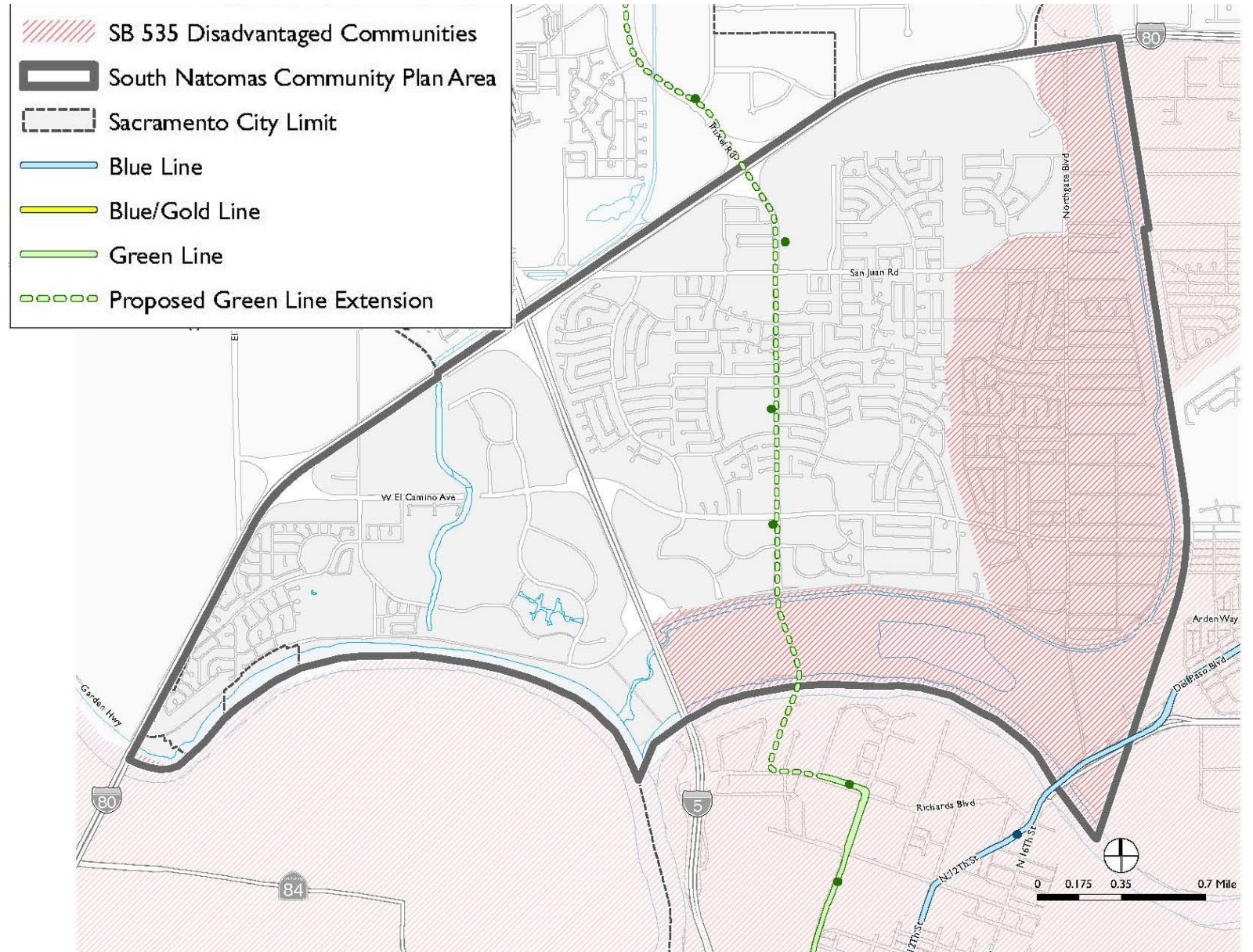


OPPORTUNITY AREAS

General Plan 2035	General Plan 2040	Underutilized	
Corridors	Vacant	Less than or equals to 0.25	Blue Line
		Between 0.25 to 0.5	Green Line
		Between 0.5 to 0.75	DNA-Green Line
			TOD Areas (Half Mile around Light Rail Stations)
			Sacramento City Limit
			Community Plan Area Boundary

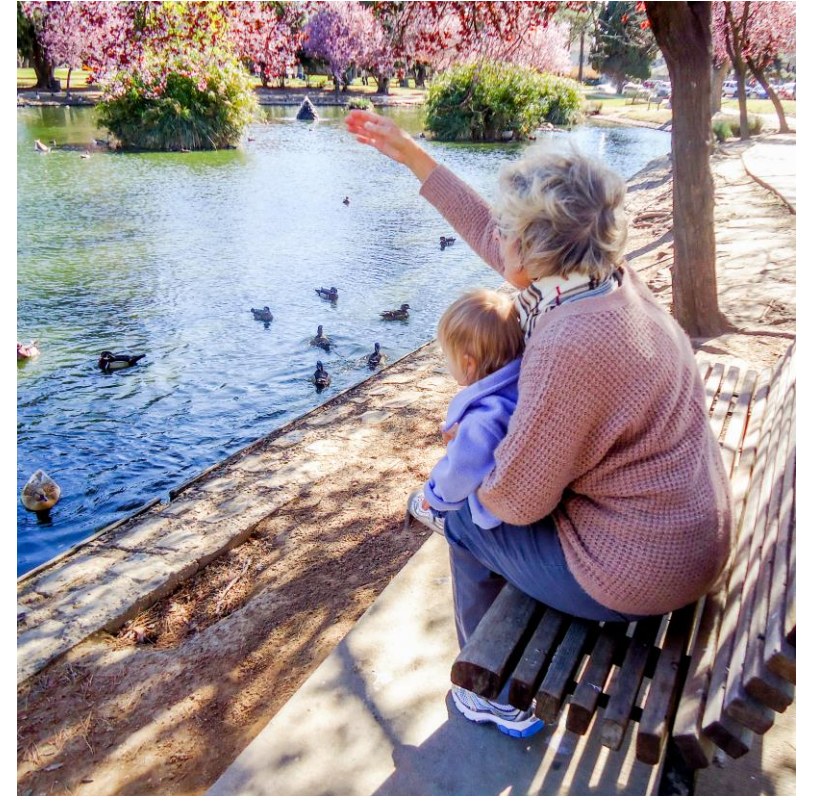
EXPOSURE TO ENVIRONMENTAL PROBLEMS

- Air quality
- Pollution
- Health risks
- Poverty



AGE-FRIENDLY COMMUNITIES

- Outdoor spaces and buildings
- Transportation
- Housing
- Social participation
- Respect and social inclusion
- Civic participation and employment
- Communication and information
- Community and Health services

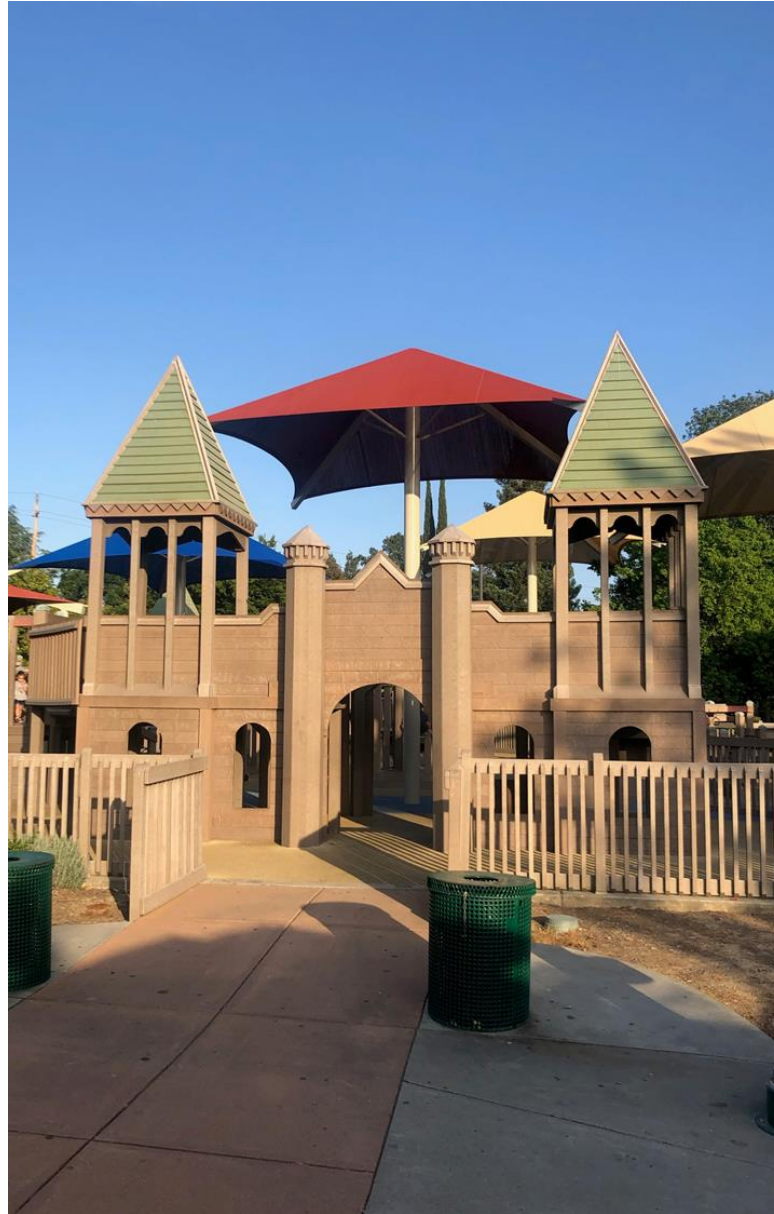




WHAT ARE THE ISSUES AND PRIORITIES FOR SOUTH NATOMAS?

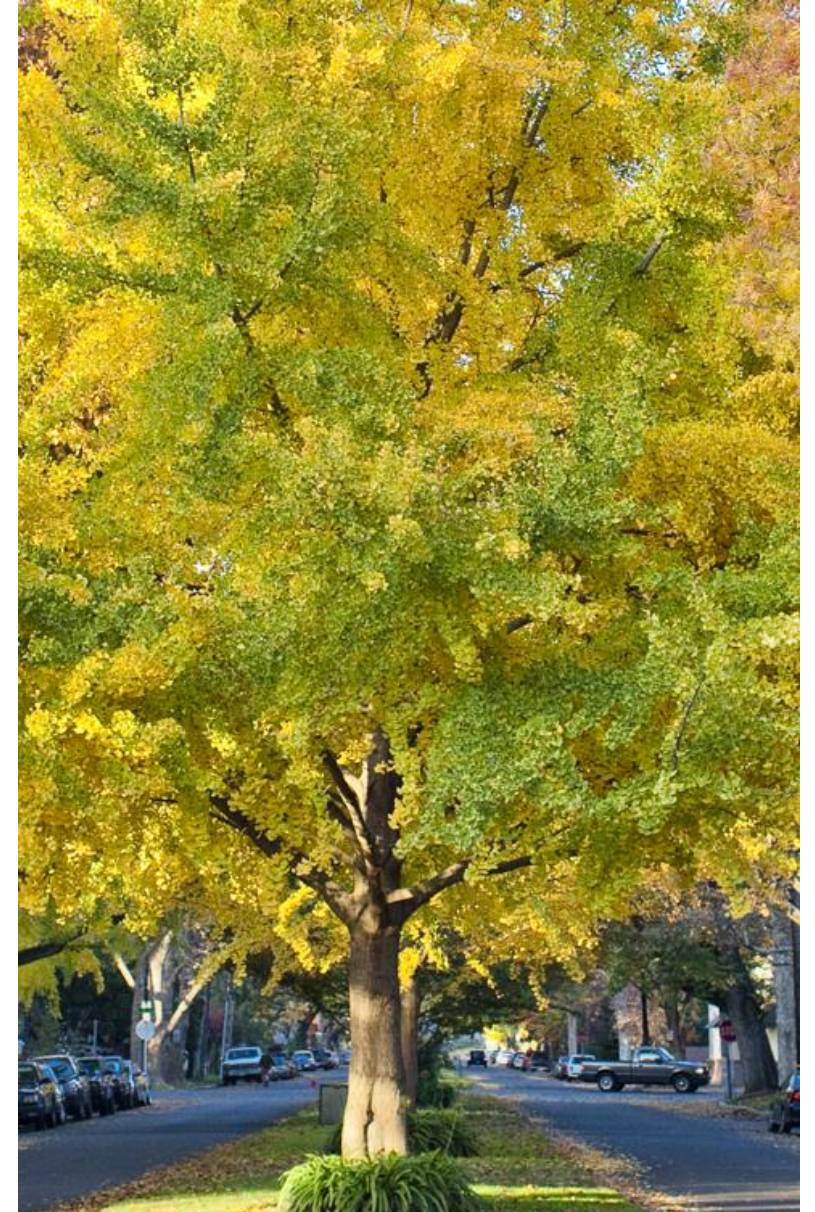
WHAT COMMUNITY ASSETS SHOULD WE BUILD ON?

- Gathering spaces?
- Local businesses?
- Community qualities?



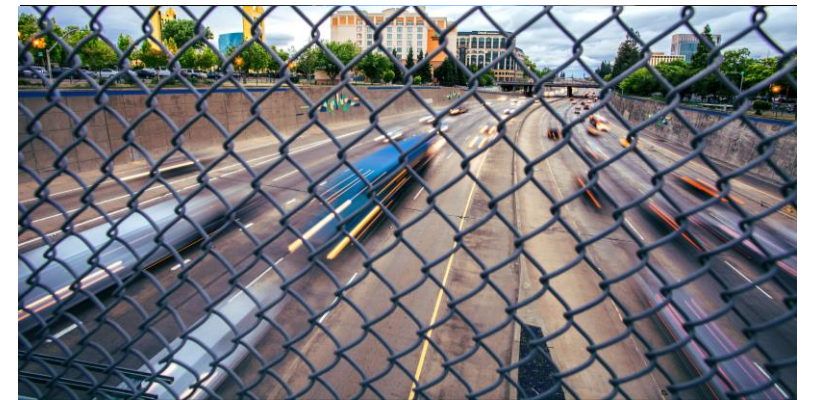
WHAT WOULD YOU LIKE TO SEE CHANGE? WHAT'S MISSING?

- Housing?
- Food access?
- Green spaces?
- Safety?
- Climate action?
- Inclusiveness?
- Economic opportunities?



ARE THERE BARRIERS TO GETTING AROUND?

- Transit access?
- Walking and biking infrastructure?
- Safety for all ages and abilities?

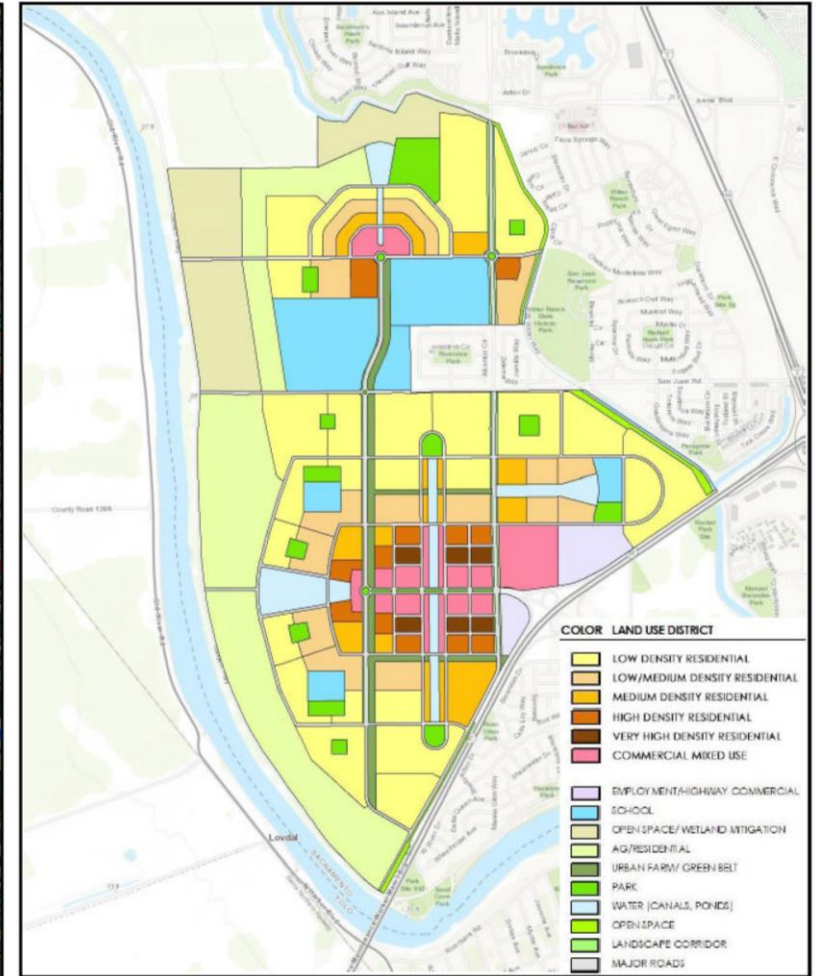


WHAT ISSUES AND OPPORTUNITIES SHOULD BE CONSIDERED IN DEVELOPMENT OF THE UPPER WESTSIDE AREA?

Aerial



Proposed Land Use



WHAT'S YOUR
VISION FOR THE
FUTURE OF SOUTH
NATOMAS?





TONIGHT'S ACTIVITY

WE WANT TO HEAR FROM YOU:

- What are the issues and opportunities for South Natomas?

1. Which places in your neighborhood make the biggest contribution to the community?
2. Which areas would you like to see change over the next 10-20 years?
3. What barriers or obstacles are there to getting around in your neighborhood?
4. What issues and opportunities should be considered as the County plans for the development of the nearby Upper Westside Specific Plan?
5. What headline should describe the South Natomas Community Plan Area on the cover of Sacramento Magazine in the year 2040? What images would accompany the article?

REPORT BACK:

- What were the key points of discussion at your table?





WHAT ARE THE NEXT STEPS?

STAY ENGAGED

- Subscribe to our mailing list tonight or online at: sac2040gpu.org
- Contact:
Matt Hertel, Senior Planner, City of Sacramento
(916) 808-7158
mhertel@cityofsacramento.org



Place
postage
stamp
here

AIM Consulting
2523 J Street, Suite 202
Sacramento, CA 95816