
NORTH SACRAMENTO

COMMUNITY PLAN AREA WORKSHOP

sacramento | **2040**



ICE BREAKER

www.menti.com

Enter code: 92 90 27

In one word or phrase, describe how you'd like your neighborhood to be in 2040.

AGENDA

- Welcome / Ice Breaker
- Opening presentation
 - What is Sacramento | 2040 ?
 - What are Community Area Plans?
 - North Sacramento Assets, Issues, and Priorities
 - Activity Introduction
- Table activity
- Report Back
- Next Steps

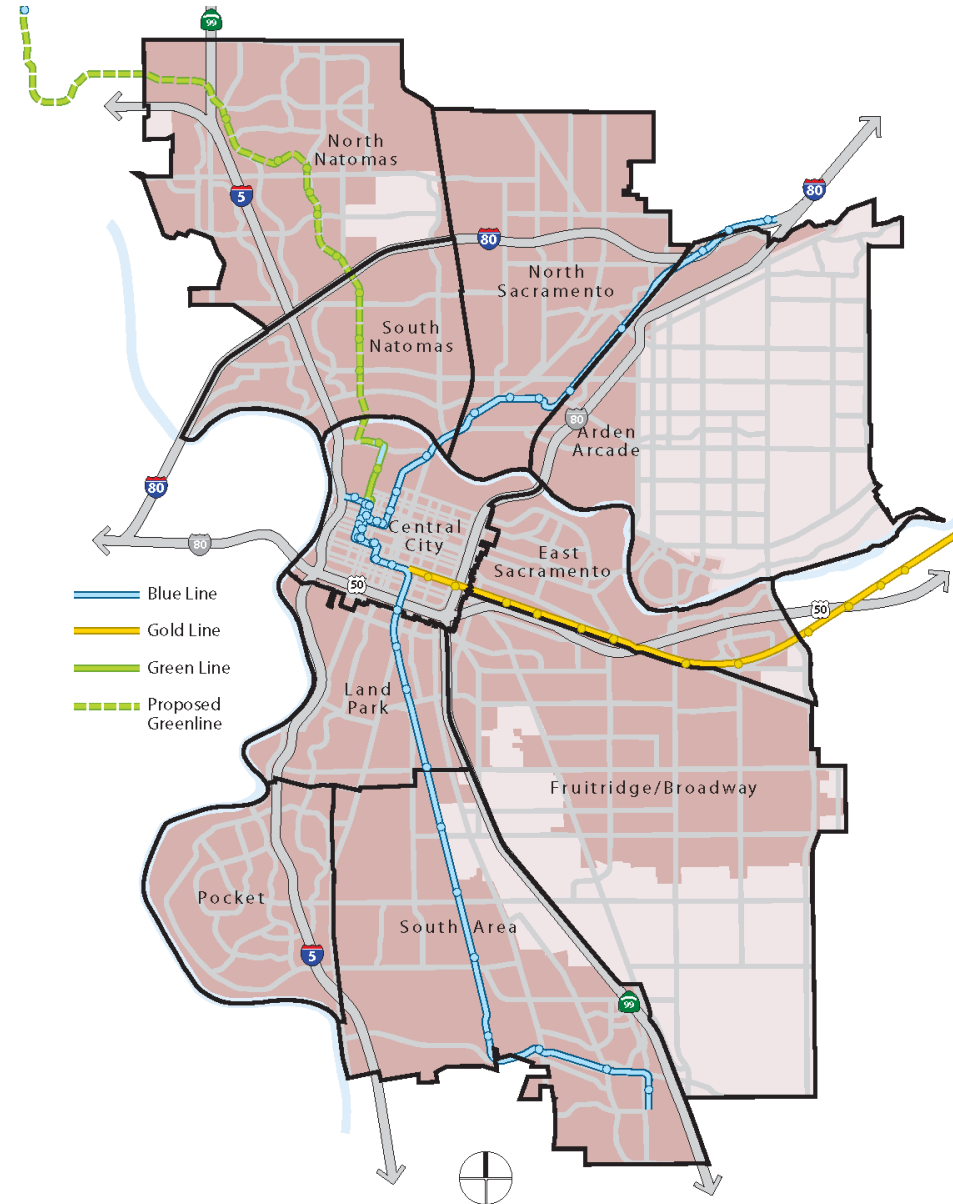




WHAT IS SACRAMENTO | 2040?

WHAT IS SACRAMENTO | 2040?

- Updates for key long-range planning documents:
 - Climate Action Plan
 - General Plan
 - Community Plans



WHAT IS A GENERAL PLAN?

- Blueprint for urban development and preservation
- Provides a 20-year framework for Sacramento's future

Sacramento's General Plan will address:

- Land Use & Urban Design
- Historic & Cultural Resources
- Economic Development
- Housing
- Mobility
- Utilities
- Education, Recreation & Culture
- Public Health & Safety
- Environmental Resources
- Environmental Constraints
- Environmental Justice

WHAT IS A CLIMATE ACTION PLAN?

- Roadmap for reducing a city's GHG emissions and adapting to climate change

Sacramento's Climate Action Plan will include:

- Inventory of current emissions
- Greenhouse gas targets and forecasts
- Greenhouse gas mitigation measures





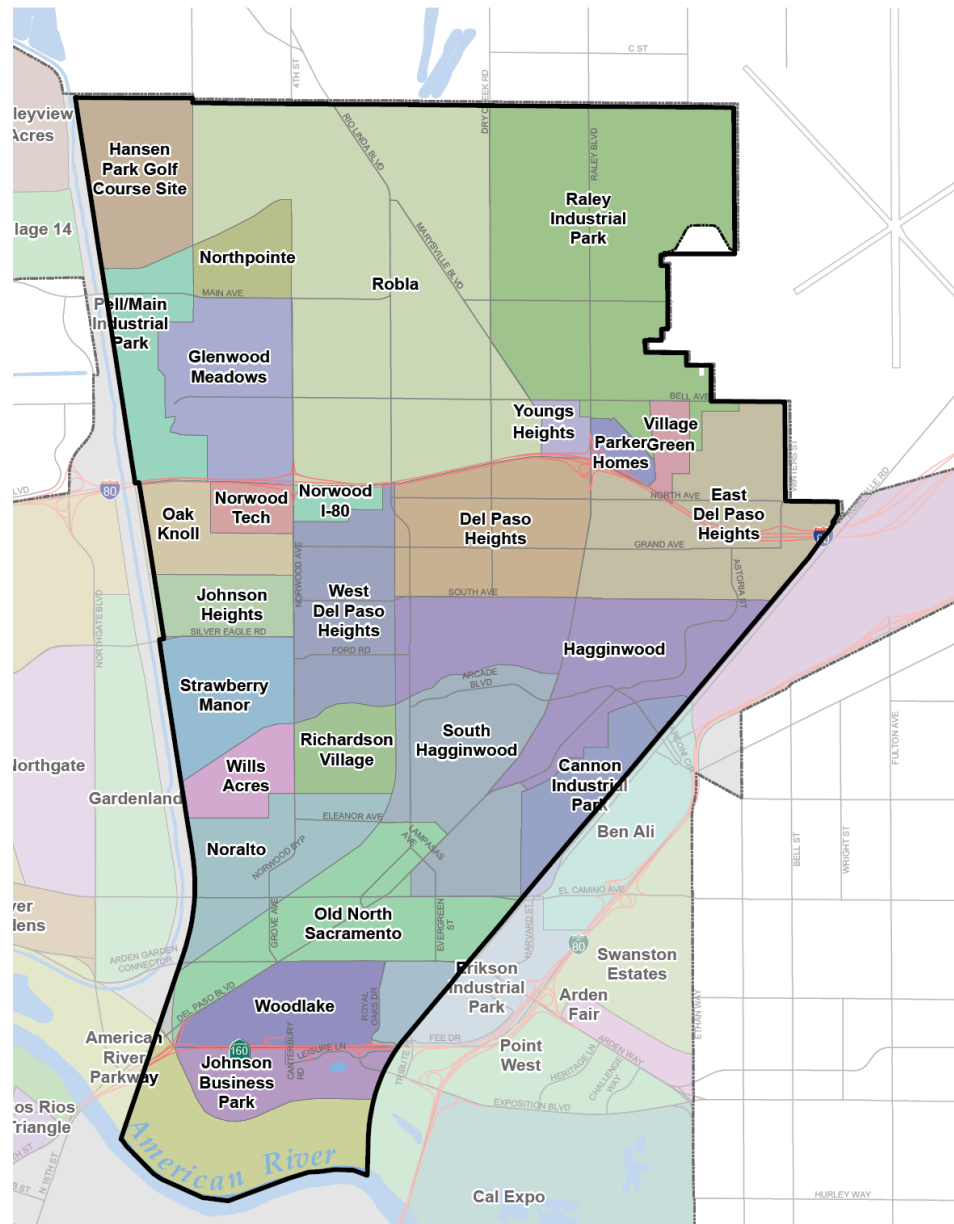
WHAT ARE COMMUNITY PLANS?

WHAT IS A COMMUNITY PLAN?

- Community Plans include specific policies that are localized and unique to Sacramento's different community areas



NORTH SACRAMENTO COMMUNITY PLAN AREA



WHY ARE WE UPDATING THE PLANS?

- Many of the Community Plans are outdated, and have different levels of detail
- The updated plan will reflect community priorities identified through the engagement process

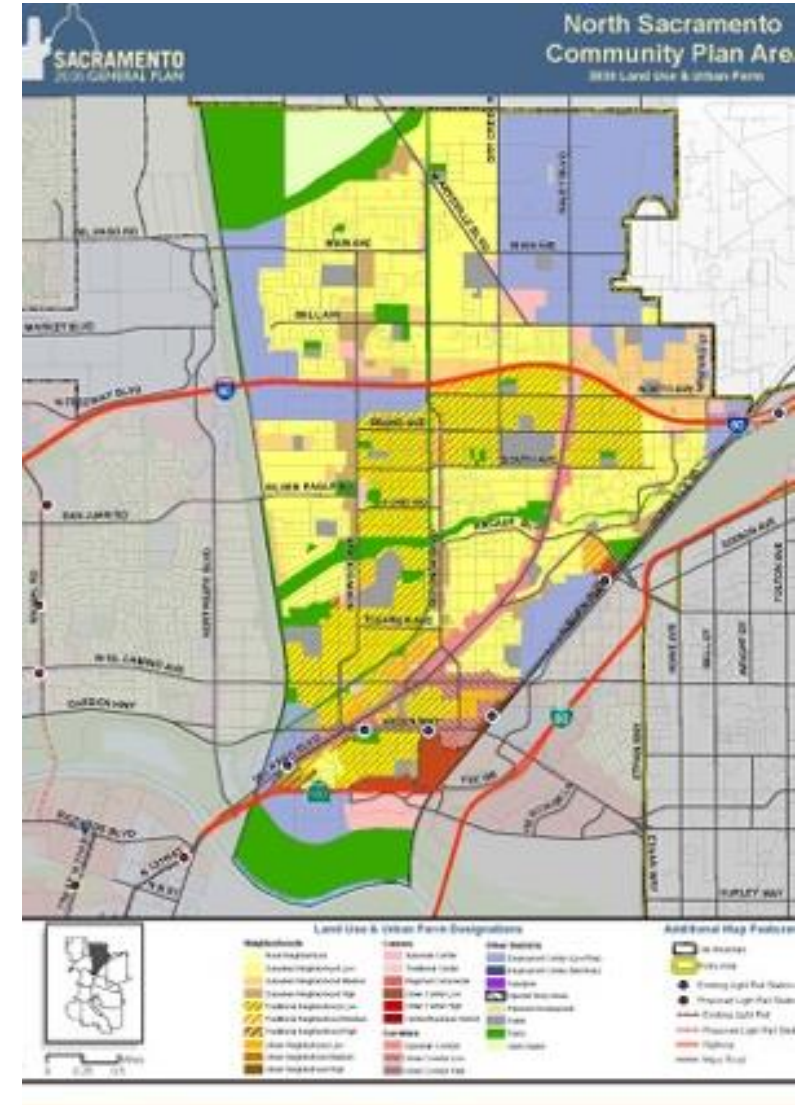
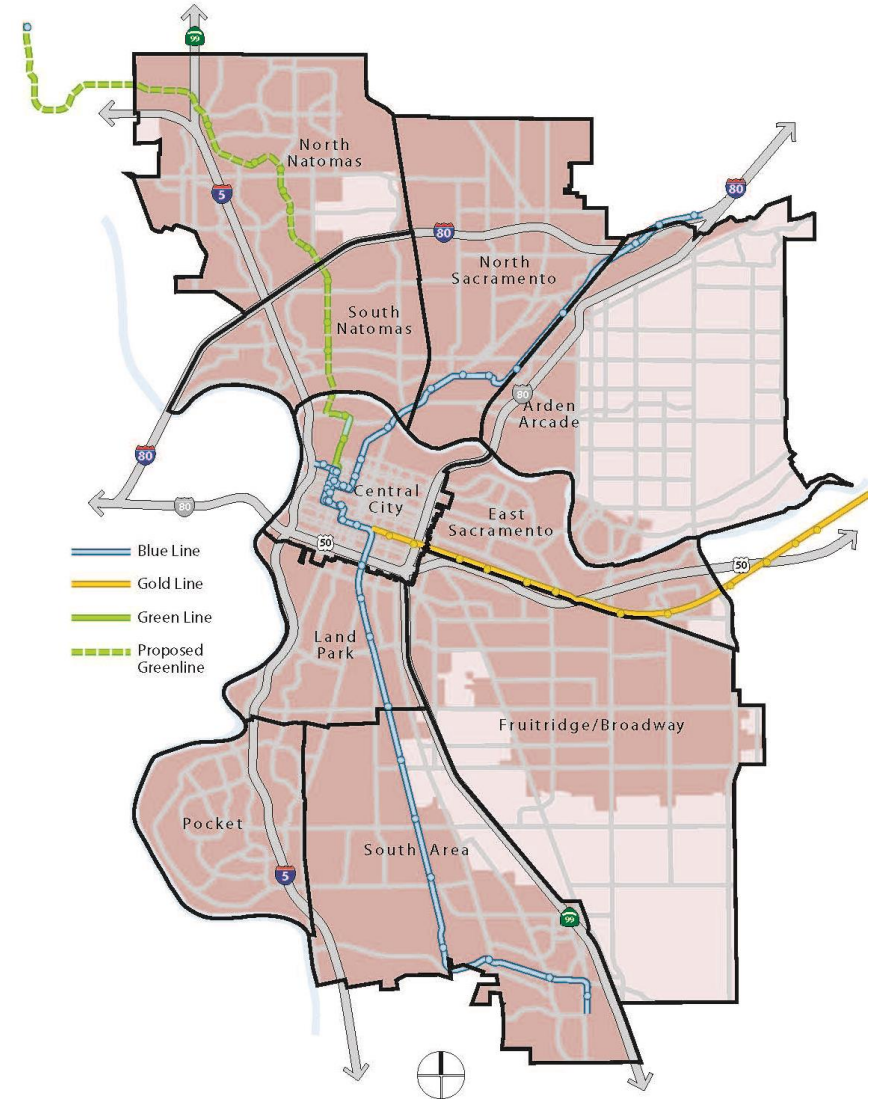


Figure NS-2
2035 General Plan Land Use & Urban Form Designations for the North Sacramento Community Plan Area

WHAT IS IN A COMMUNITY PLAN?

Each Community Plan will include:

- Community Vision
- Community Profile
- Community Issues
- Land Use Designations
- Community Policies
- Opportunity Areas



PROJECT SCHEDULE

2020

2021

Feb Mar Apr May June July Aug Sept Oct Nov Dec Jan Feb Mar Apr May June July Aug Sept Oct Nov Dec Jan Feb

WE ARE HERE →

Master Environmental Impact Report Scoping Meeting



Community Outreach Round 1: Vision, Issues, Opportunities

Community Plan Area Workshops



Citywide Survey



Community Outreach Round 2: Options & Alternatives

Community Plan Area Workshops



Community Open Houses



Public Hearings

ISSUE/OPPORTUNITY IDENTIFICATION

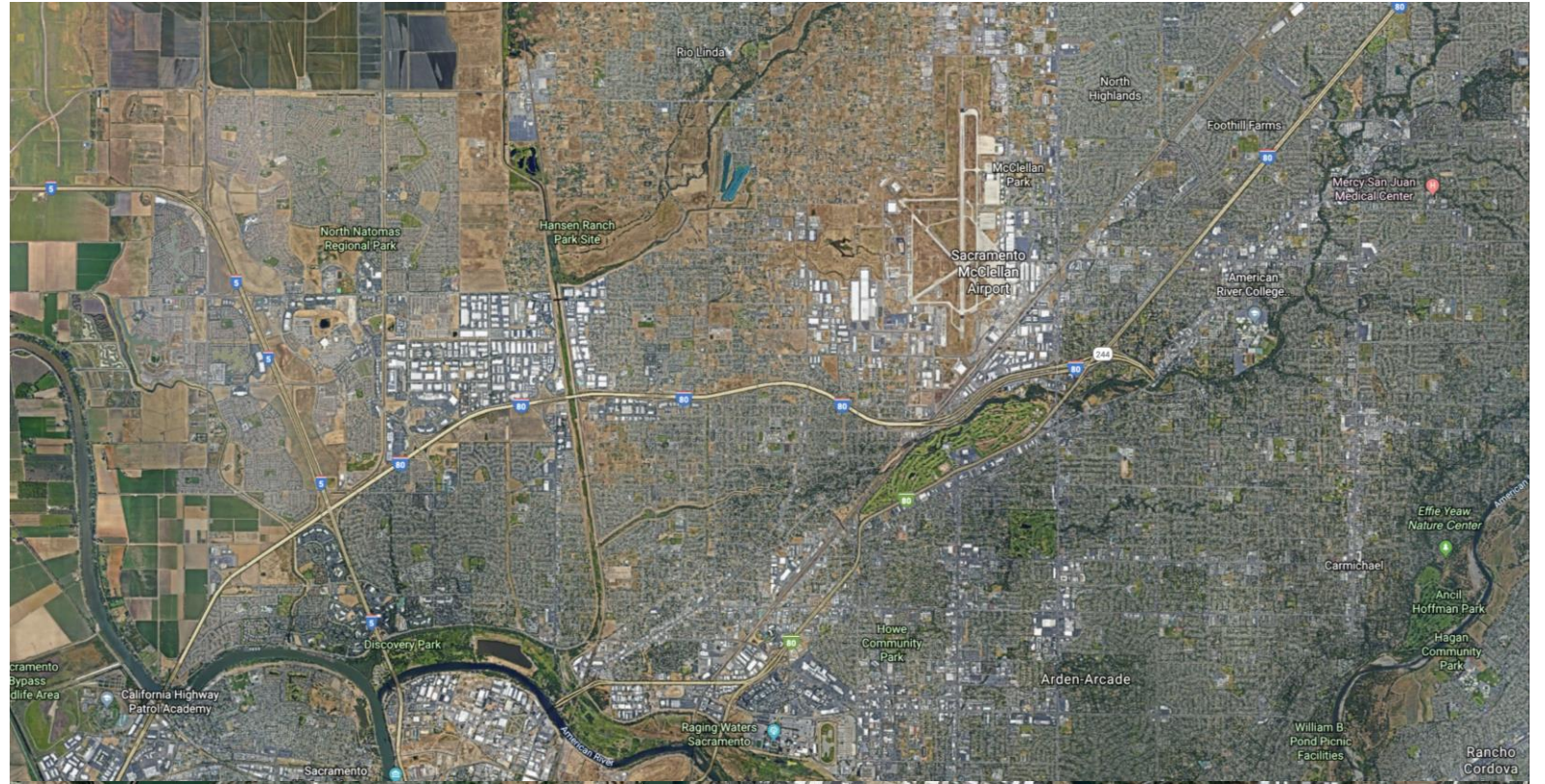
OPTIONS & ALTERNATIVES EXPLORATION

DRAFT PLAN PREPARATION

FINAL PLAN ADOPTION

WHAT WILL THE PLAN BE BASED ON?

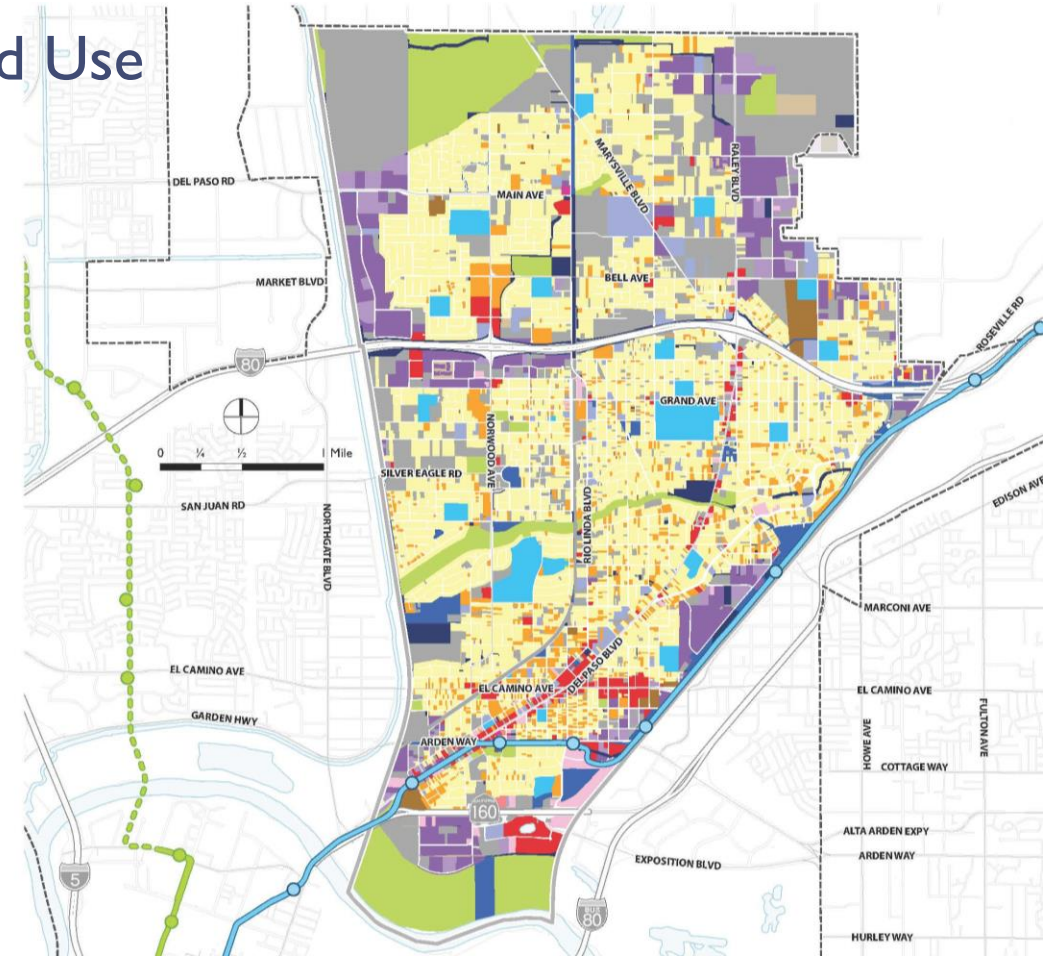
- Demographic, geographic, and economic data
- Input from the community



NORTH SACRAMENTO HAS:

- Housing (yellow and orange)
- Commercial corridors (red)
- Industrial (purple)
- Parks throughout (green)
- Vacant land (grey)

Existing Land Use



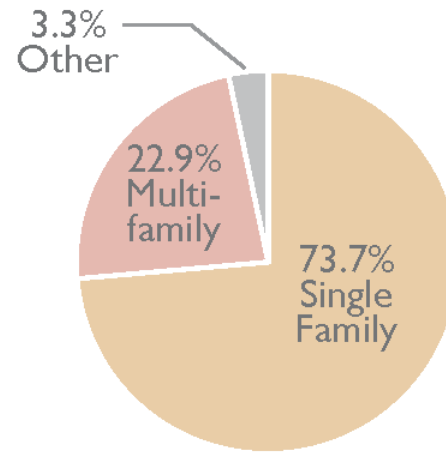
Existing Land Use					
	Single Family		Retail/Commercial		Industrial
	Multi-family		Office		Public
	Mobile Home		Mixed Use		School
					Utilities/Infrastructure
					Institutional
					Vacant
					Open Space/Recreational
					Miscellaneous
					Blue Line
					Green Line
					DNA-Green Line
					Sacramento City Limit
					Community Plan Area Boundary

NORTH SACRAMENTO HAS:

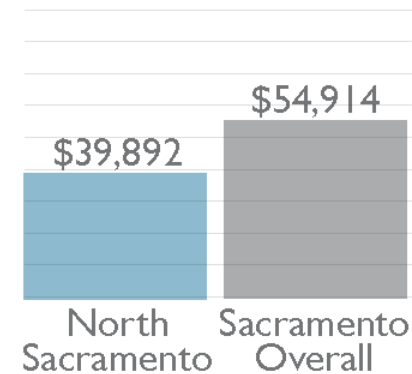
- A mix of single family and multi-family housing
- Median incomes and home prices a little lower than city-wide medians
- More jobs in trade, transportation, utilities, education, and health.

Economic Data

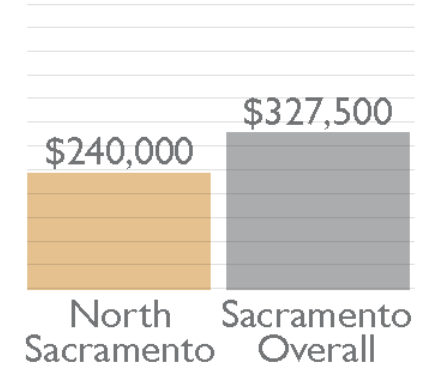
HOUSING TYPES



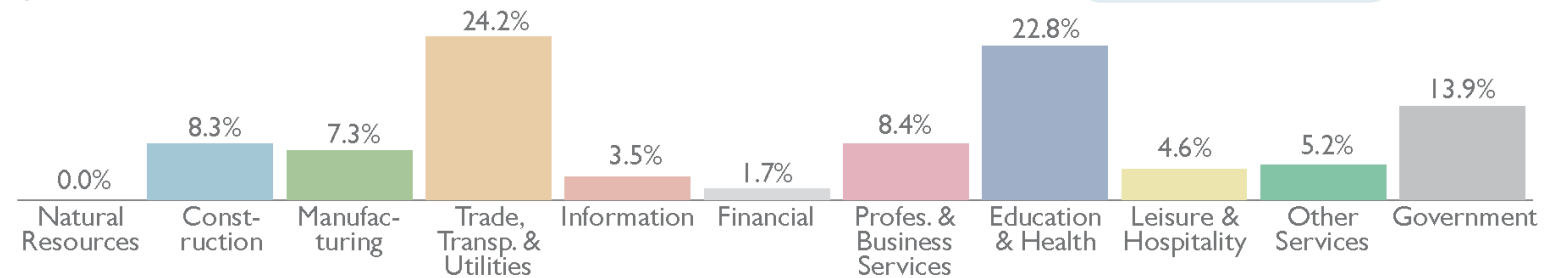
2018 MEDIAN ANNUAL HOUSEHOLD INCOME



2018 MEDIAN HOME SALE PRICE



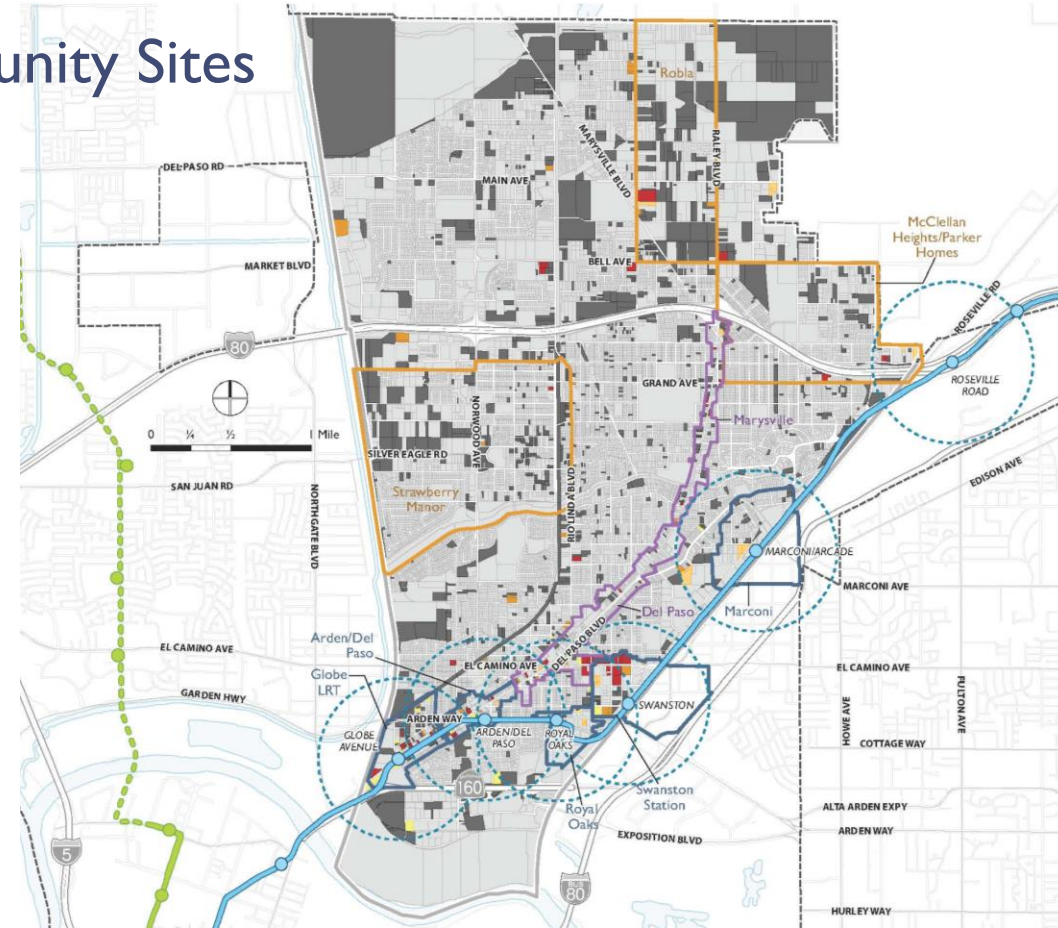
JOB TYPES



THERE ARE OPPORTUNITY SITES:

- In vacant parcels
- In underutilized lands
- Near transit stops

Opportunity Sites



OPPORTUNITY AREAS

General Plan 2035

- Corridors
- Neighborhoods
- Transit Center

General Plan 2040

- Vacant

Underutilized

- AV Ratio Less than or equals to 0.25
- AV Ratio Between 0.25 to 0.5
- AV Ratio Between 0.5 to 0.75
- AV Ratio Between 0.75 to 1.0 (For TOD Areas Only)

Blue Line

- Blue/Gold Line

Green Line

- Proposed Green Line Extension

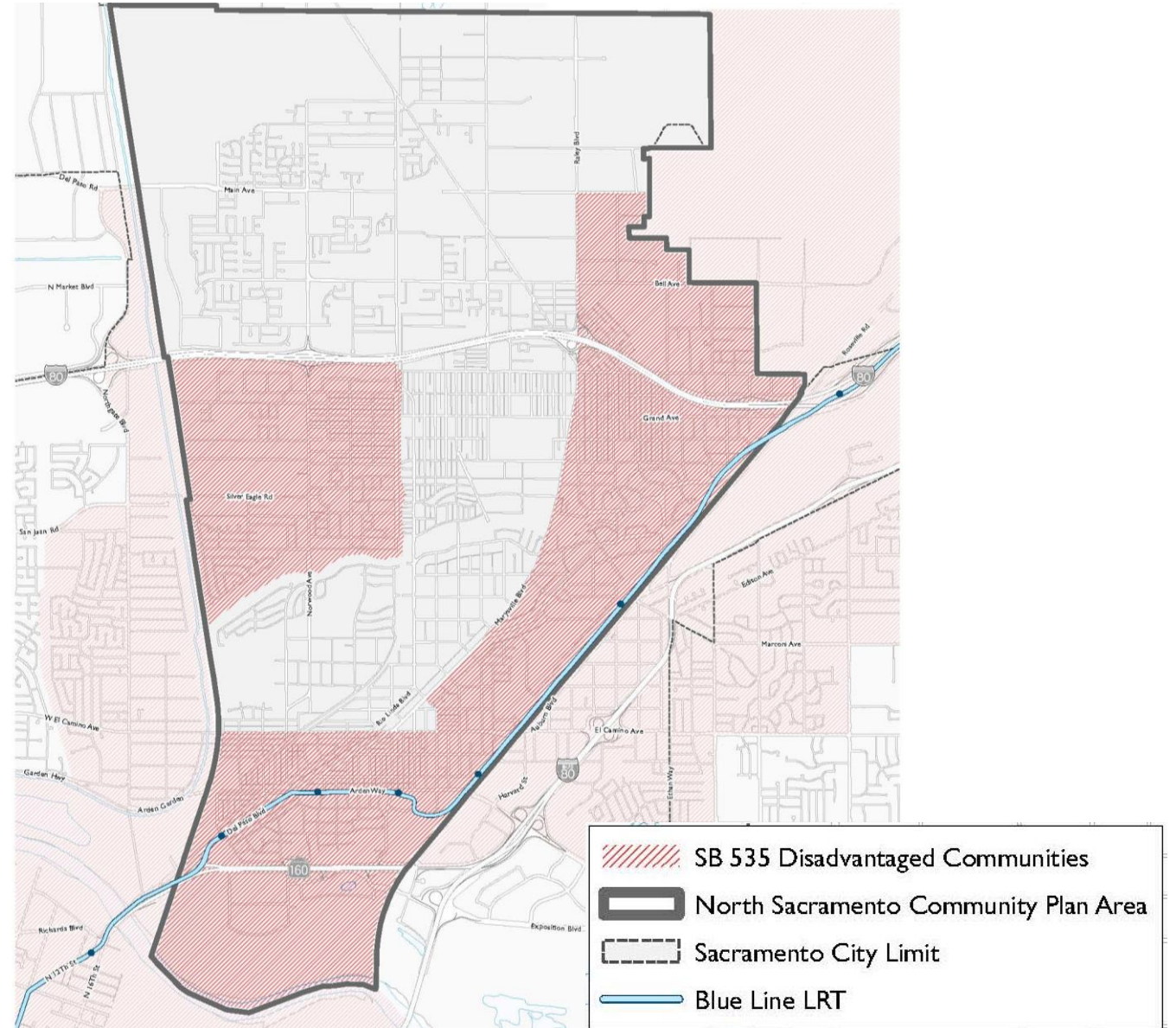
TOD Areas (Half Mile around Light Rail)

- Sacramento City Limit

- Community Plan Area Boundary

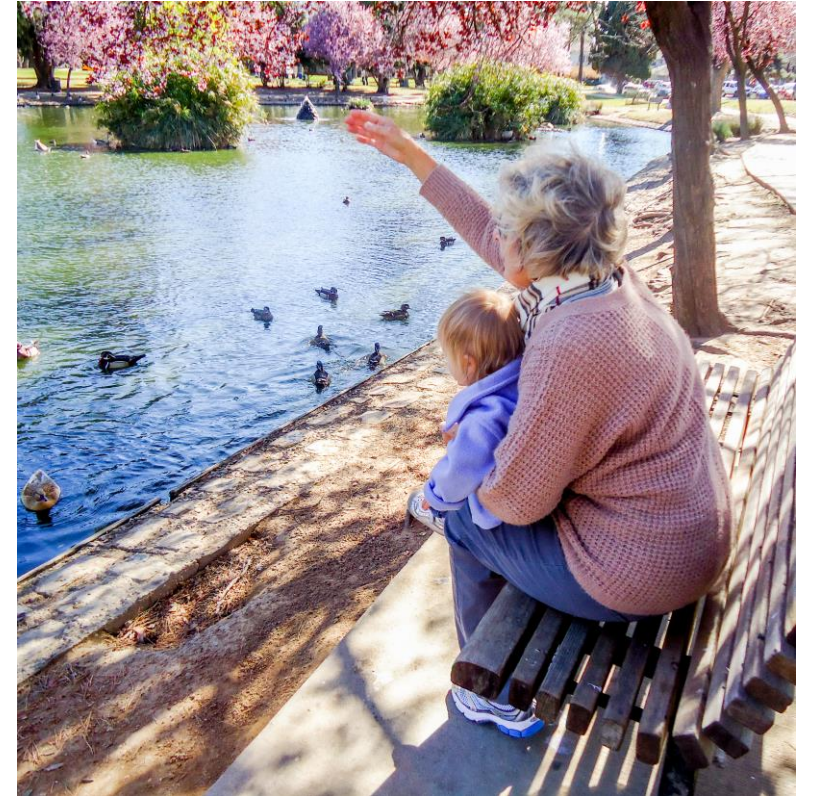
EXPOSURE TO ENVIRONMENTAL PROBLEMS

- Air quality
- Pollution
- Health risks
- Poverty



AGE-FRIENDLY COMMUNITIES

- Outdoor spaces and buildings
- Transportation
- Housing
- Social participation
- Respect and social inclusion
- Civic participation and employment
- Communication and information
- Community and Health services

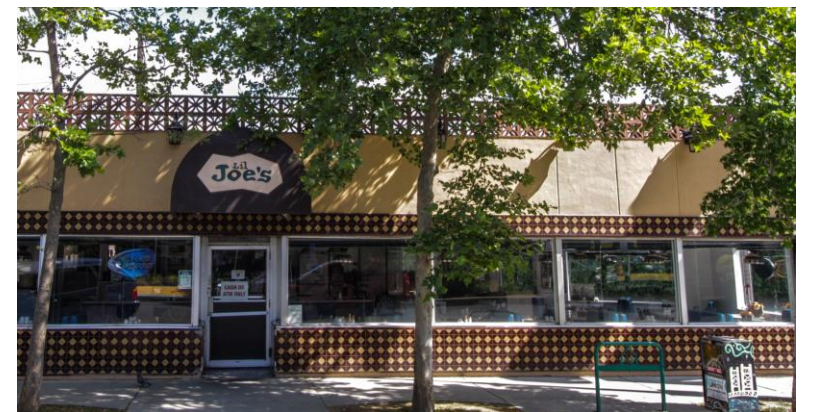




WHAT ARE THE ISSUES AND PRIORITIES FOR NORTH SACRAMENTO?

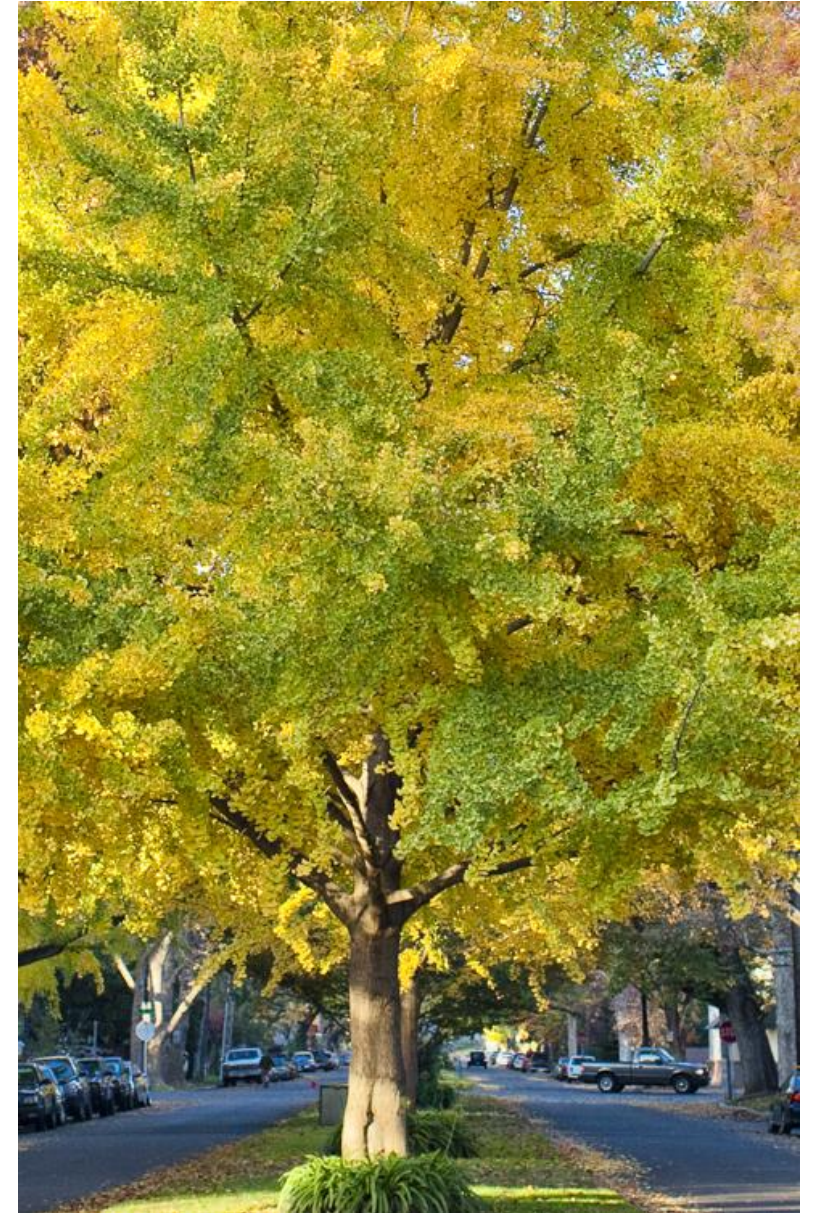
WHAT COMMUNITY ASSETS SHOULD WE BUILD ON?

- Gathering spaces?
- Local businesses?
- Community qualities?



WHAT WOULD YOU LIKE TO SEE CHANGE? WHAT'S MISSING?

- Housing?
- Food access?
- Green spaces?
- Safety?
- Climate action?
- Inclusiveness?
- Economic opportunities?

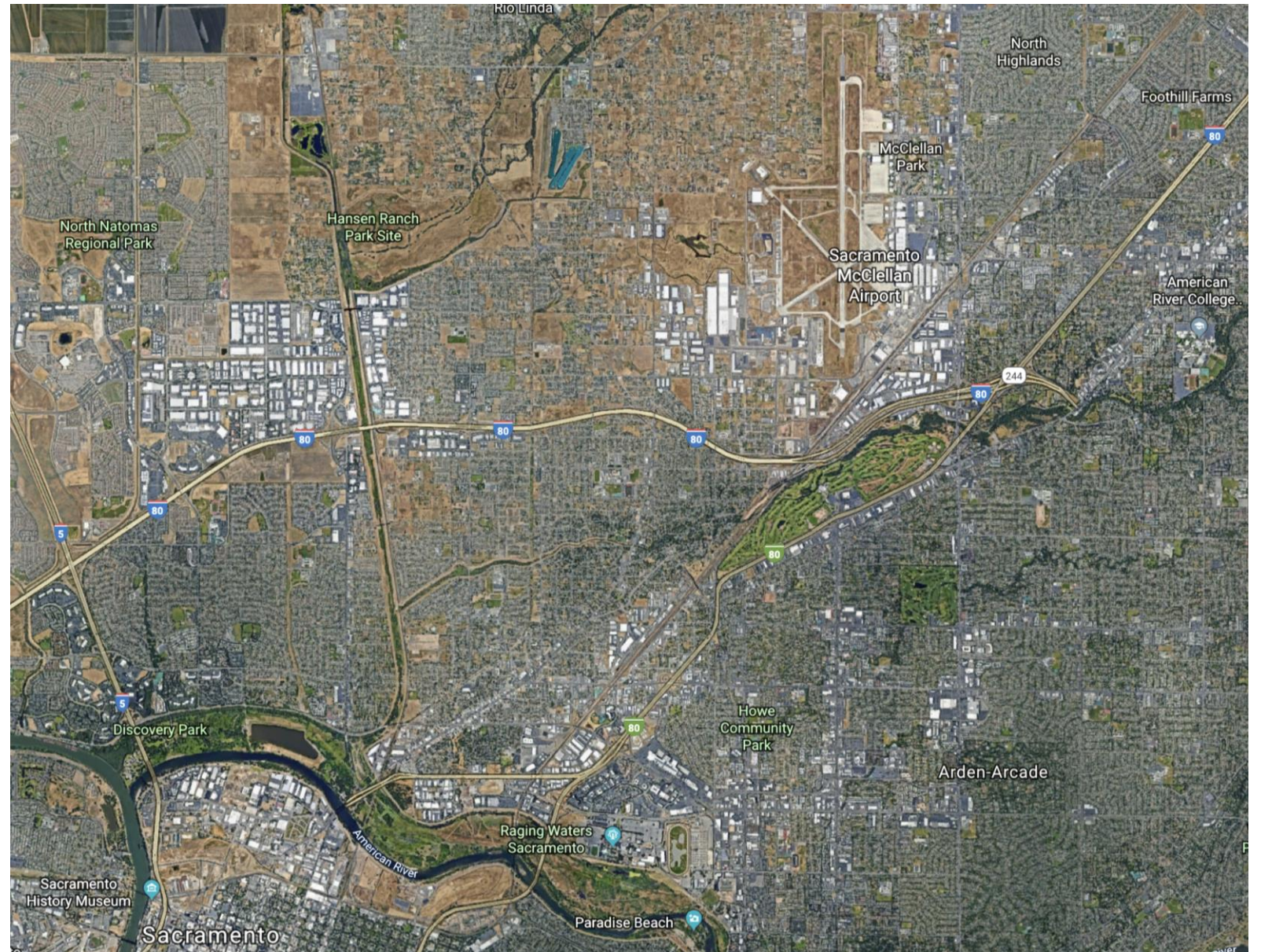


ARE THERE BARRIERS TO GETTING AROUND?

- Transit access?
- Walking and biking infrastructure?
- Safety for all ages and abilities?



WHAT'S YOUR VISION FOR THE FUTURE OF NORTH SACRAMENTO?





TONIGHT'S ACTIVITY

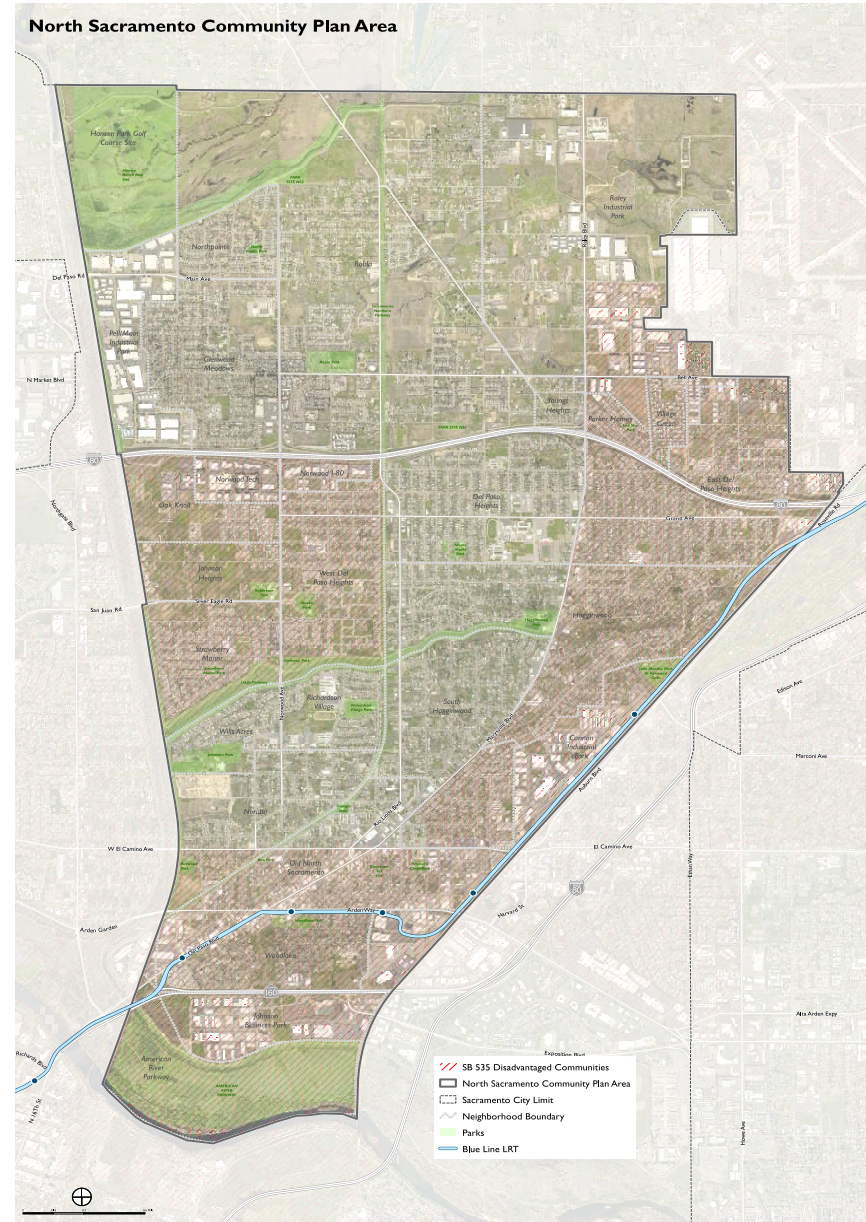
WE WANT TO HEAR FROM YOU:

- What are the issues and opportunities for North Sacramento?

1. Which places in your neighborhood make the biggest contribution to the community?
2. Which areas would you like to see change over the next 10-20 years?
3. What barriers or obstacles are there to getting around in your neighborhood?
4. What headline should describe the North Sacramento Community Plan Area on the cover of Sacramento Magazine in the year 2040? What images would accompany the article?

REPORT BACK:

- What were the key points of discussion at your table?





WHAT ARE THE NEXT STEPS?

STAY ENGAGED

- Subscribe to our mailing list tonight or online at: sac2040gpu.org
- Contact:
Matt Hertel, Senior Planner, City of Sacramento
(916) 808-7158
mhertel@cityofsacramento.org

