

---

# EAST SACRAMENTO

## COMMUNITY PLAN AREA WORKSHOP

sacramento | **2040**



# ICE BREAKER

[www.menti.com](http://www.menti.com)

Enter code: 65 81 97

- I. In one word or phrase, describe how you'd like your neighborhood to be in 2040.

# AGENDA

- Welcome / Ice Breaker
- Opening presentation
  - What is Sacramento | 2040 ?
  - What are Community Area Plans?
  - East Sacramento Assets, Issues, and Priorities
  - Activity Introduction
- Table activity
- Report Back
- Next Steps

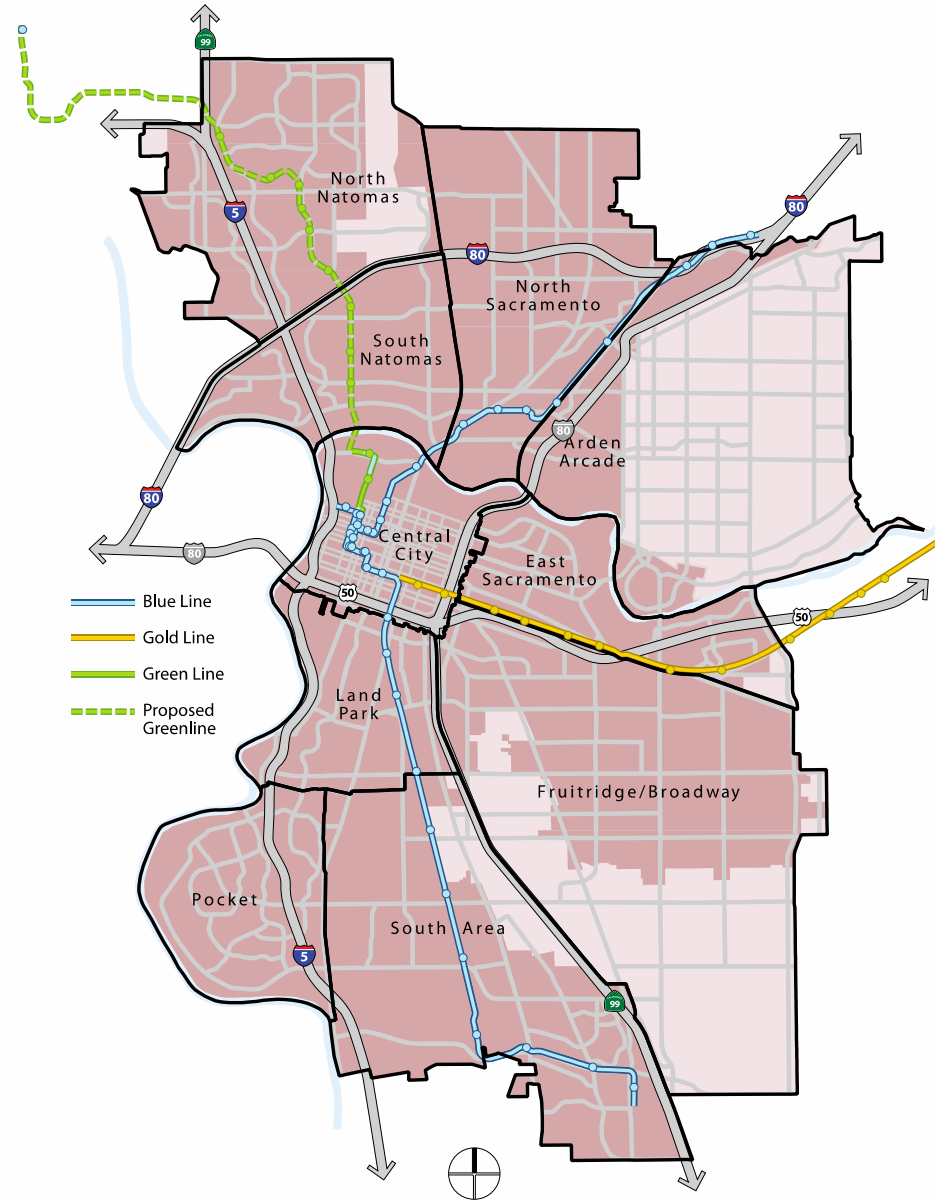




# WHAT IS SACRAMENTO | 2040?

# WHAT IS SACRAMENTO | 2040?

- Updates for key long-range planning documents:
  - General Plan
  - Climate Action Plan



## WHAT IS A GENERAL PLAN?

- Blueprint for urban development and preservation
- Provides a 20-year framework for Sacramento's future

## Sacramento's General Plan will address:

- Land Use & Urban Design
- Historic & Cultural Resources
- Economic Development
- Housing
- Mobility
- Utilities
- Education, Recreation & Culture
- Public Health & Safety
- Environmental Resources
- Environmental Constraints
- Environmental Justice

# WHAT IS A CLIMATE ACTION PLAN?

- Roadmap for reducing a city's GHG emissions and adapting to climate change

Sacramento's Climate Action Plan will include:

- Inventory of current emissions
- Greenhouse gas targets and forecasts
- Greenhouse gas mitigation measures



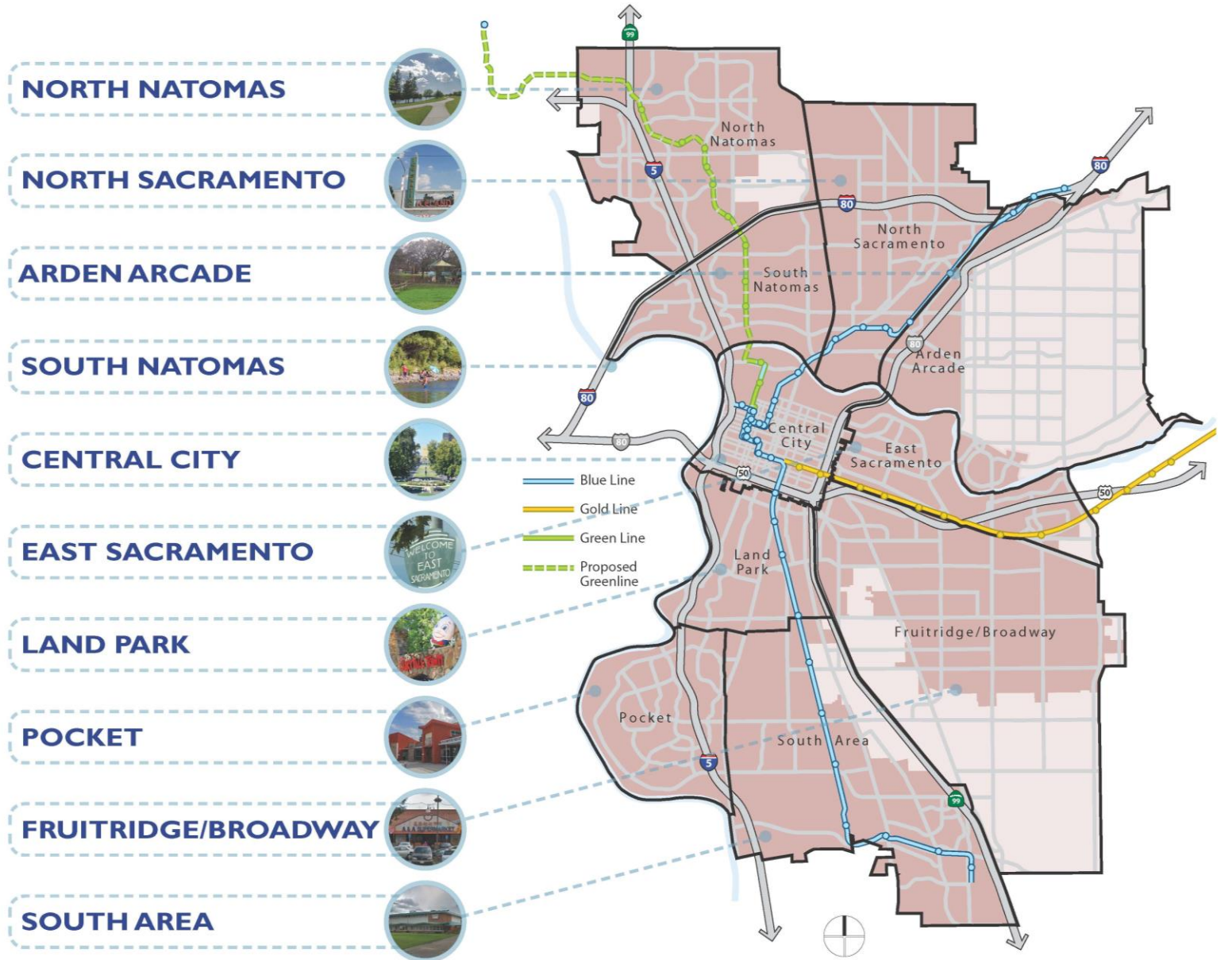


# WHAT ARE COMMUNITY PLANS?

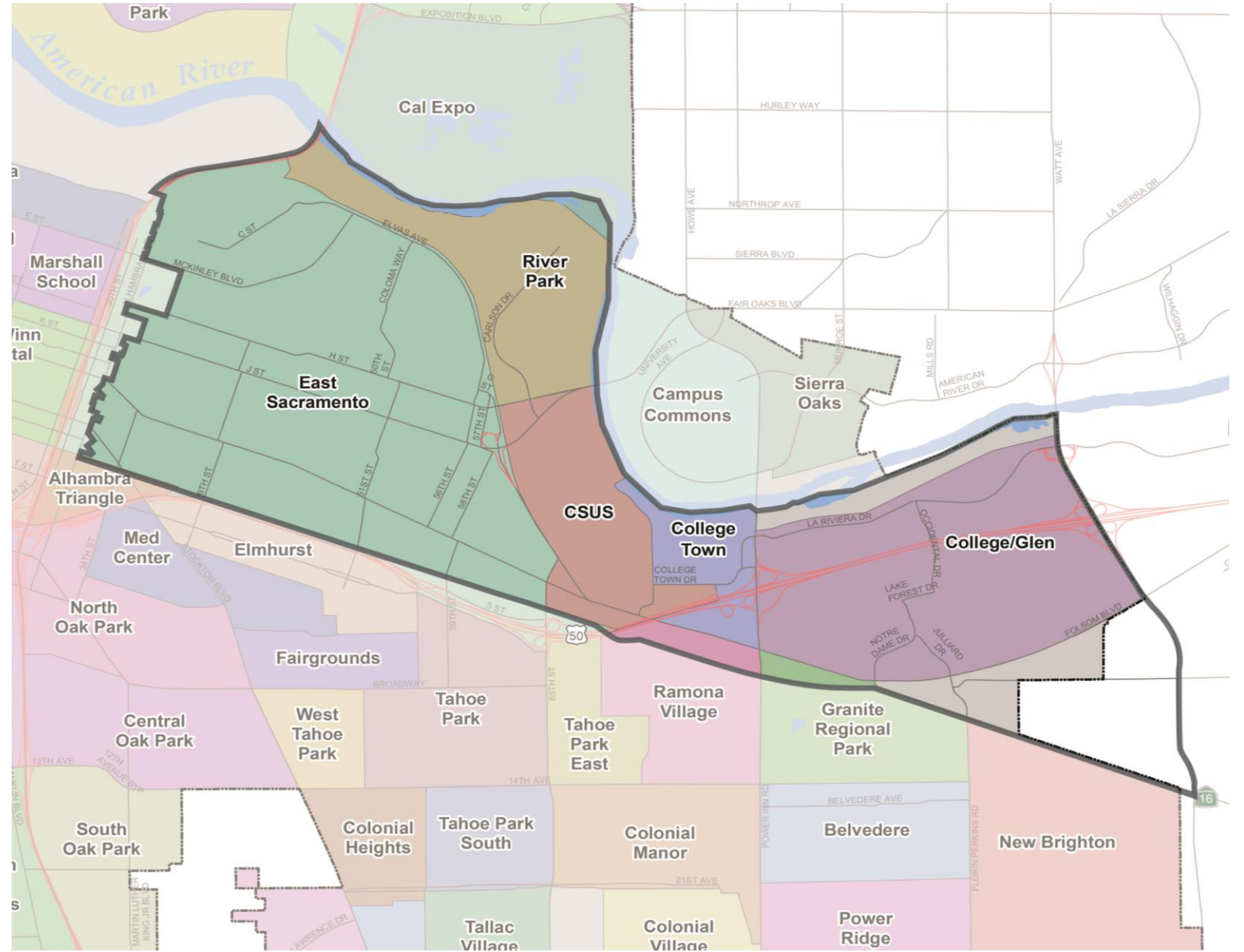


# WHAT IS A COMMUNITY PLAN?

- Community Plans include specific policies that are localized and unique to Sacramento's different community areas



# EAST SACRAMENTO COMMUNITY PLAN AREA



# WHY ARE WE UPDATING THE PLANS?

- Many of the Community Plans are outdated, and have different levels of detail
- The updated plan will reflect community priorities identified through the engagement process

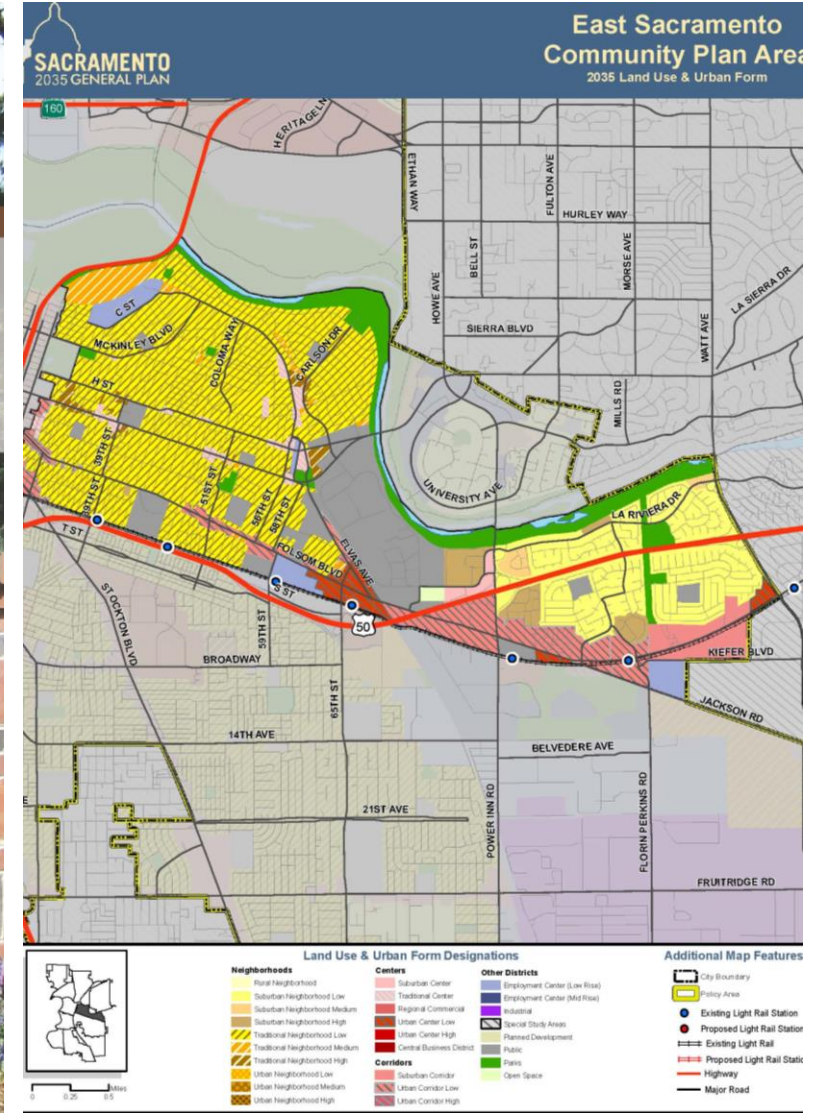
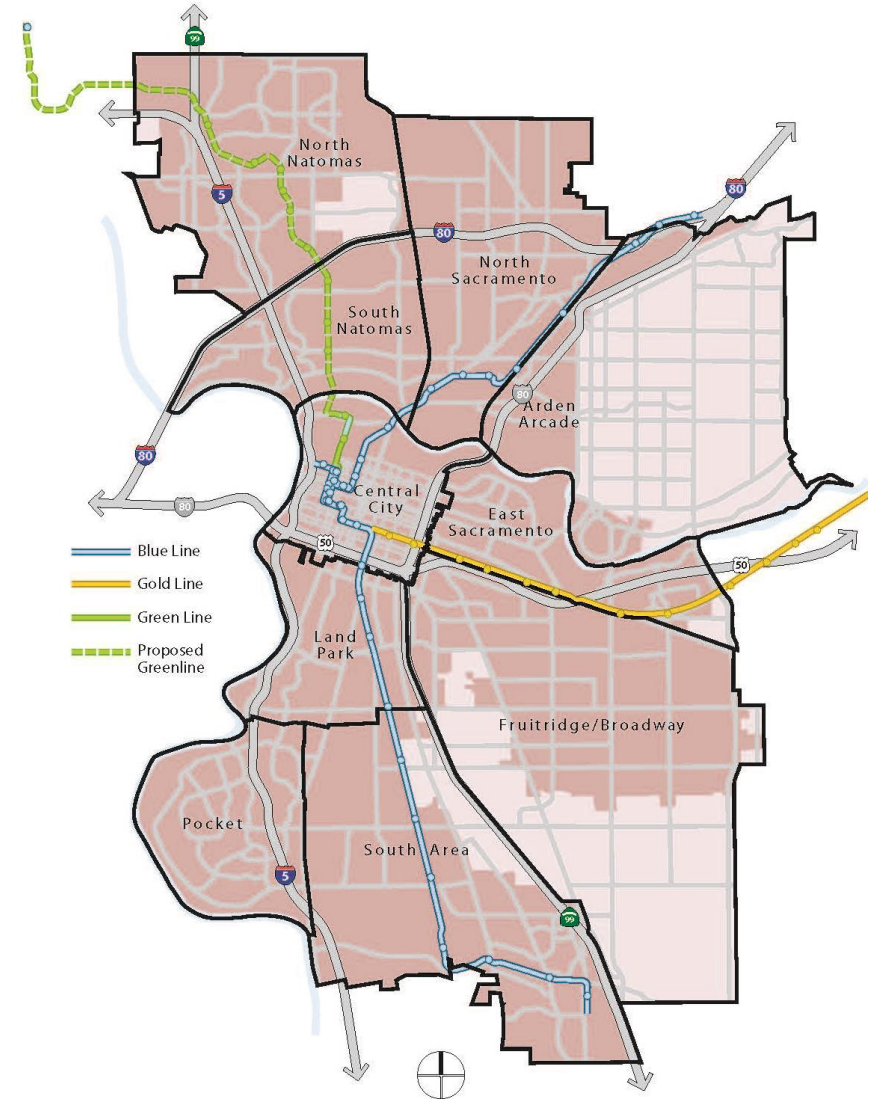


Figure ES-2  
 2035 General Plan Land Use & Urban Form Designations for the

# WHAT IS IN A COMMUNITY PLAN?

Each Community Plan will include:

- Community Vision
- Community Profile
- Community Issues
- Land Use Designations
- Community Policies
- Opportunity Areas



# PROJECT SCHEDULE

2020

2021

Feb Mar Apr May June July Aug Sept Oct Nov Dec Jan Feb Mar Apr May June July Aug Sept Oct Nov Dec Jan Feb

**WE ARE HERE** →

Master Environmental Impact Report Scoping Meeting



Community Outreach Round 1: Vision, Issues, Opportunities

Community Plan Area Workshops



Citywide Survey



Community Outreach Round 2: Options & Alternatives

Community Plan Area Workshops



Community Open Houses



Public Hearings

ISSUE/OPPORTUNITY IDENTIFICATION

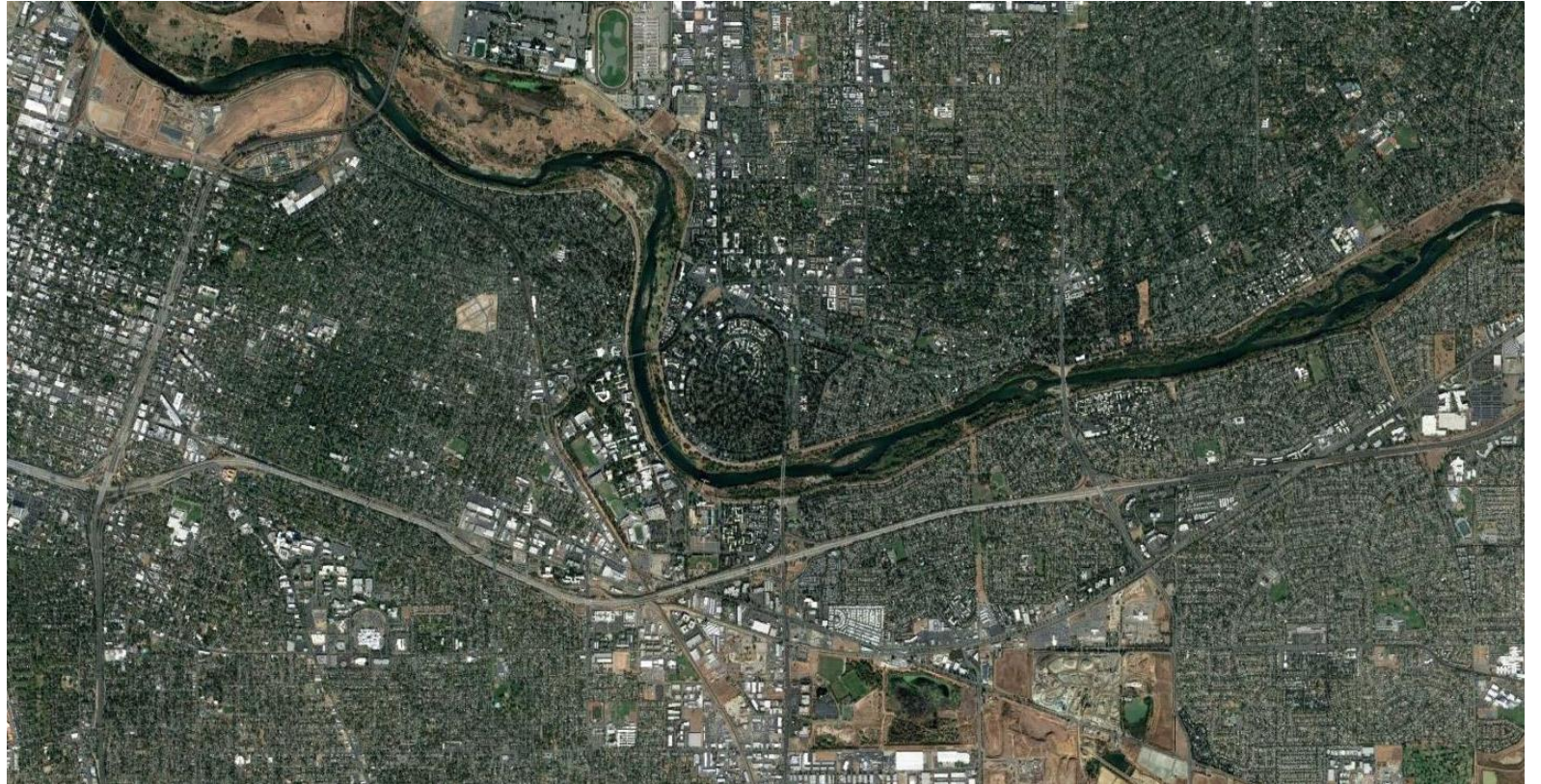
OPTIONS & ALTERNATIVES EXPLORATION

DRAFT PLAN PREPARATION

FINAL PLAN ADOPTION

# WHAT WILL THE PLAN BE BASED ON?

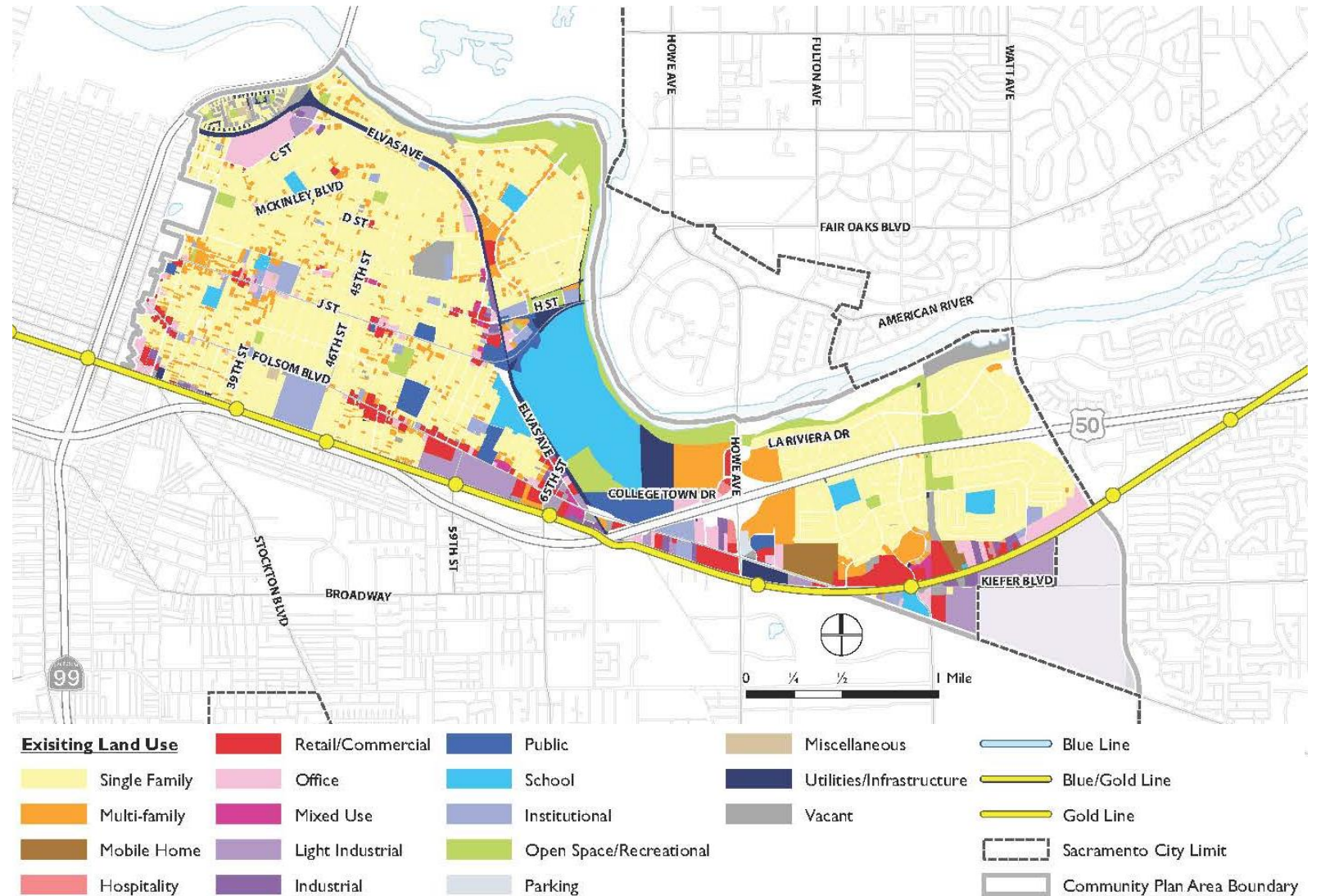
- Demographic, geographic, and economic data
- Input from the community



# EAST SACRAMENTO HAS:

- Housing (yellow and orange)
- Schools (blue)
- Commercial corridors (red)
- Large office areas (pink)
- Industrial (purple)

## Existing Land Use

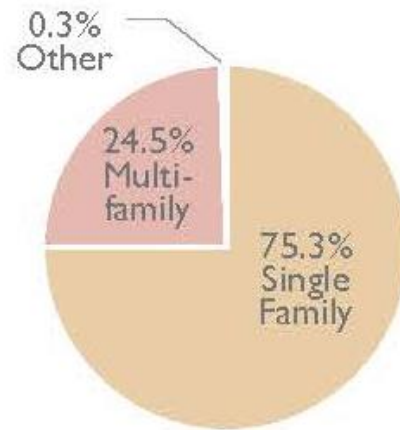


# EAST SACRAMENTO HAS:

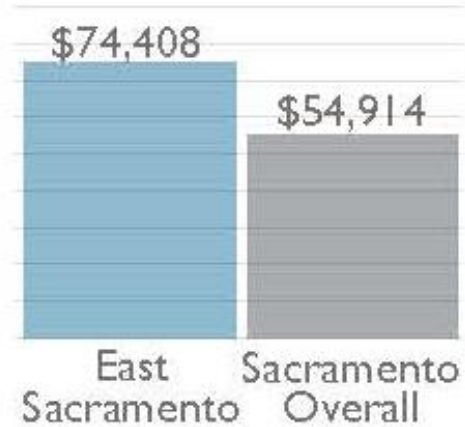
- A mix of single family and multi-family housing
- Median incomes and home prices higher than the city-wide medians
- More jobs in education and health

## Economic Data

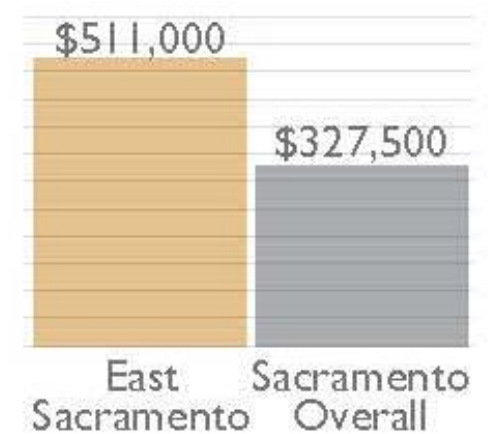
### HOUSING TYPES



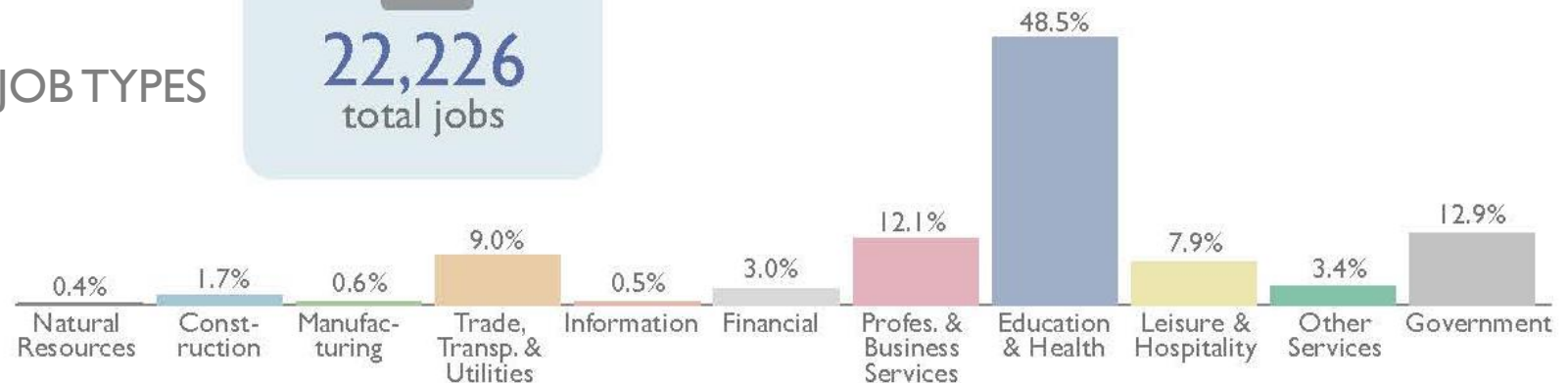
### 2018 MEDIAN ANNUAL HOUSEHOLD INCOME



### 2018 MEDIAN HOME SALE PRICE



### JOB TYPES

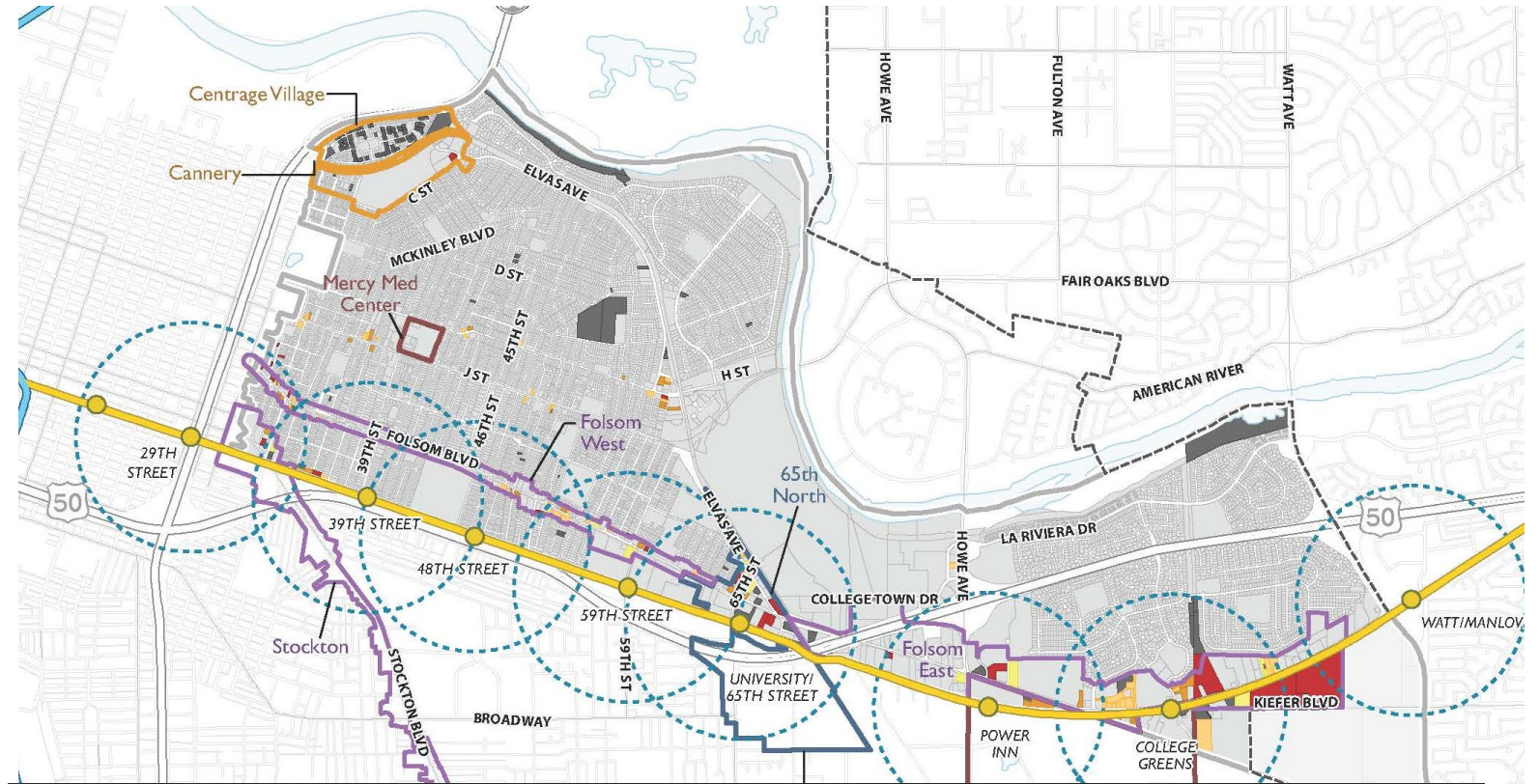




# THERE ARE OPPORTUNITY SITES:

- In vacant parcels
- In underutilized lands
- Near transit stops

## Opportunity Sites



### OPPORTUNITY AREAS

#### General Plan 2035

- Centers
- Corridors
- Neighborhoods
- Transit Center

#### General Plan 2040

- Vacant

#### Underutilized

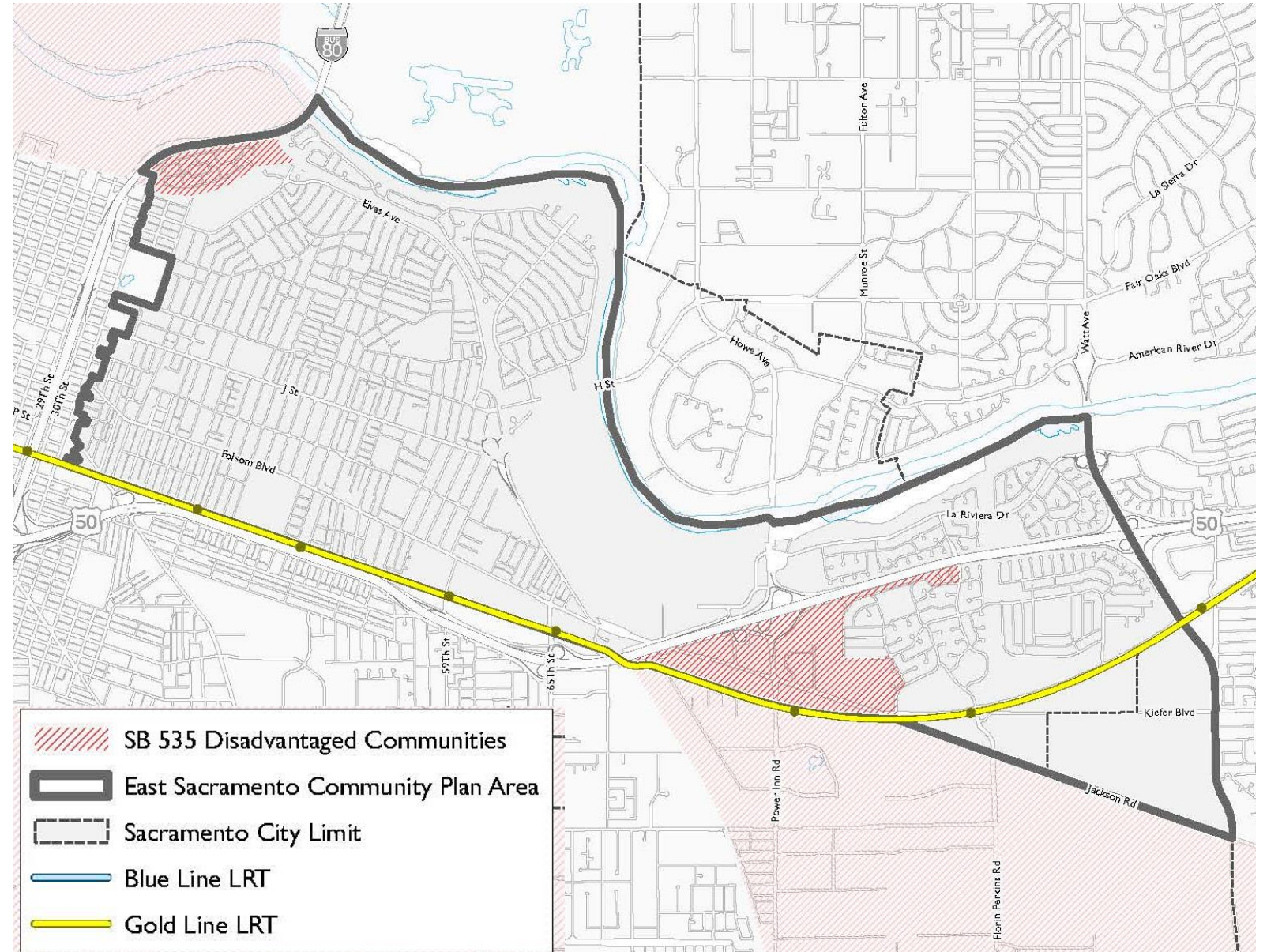
- AV Ratio Less than or equals to 0.25
- AV Ratio Between 0.25 to 0.5
- AV Ratio Between 0.5 to 0.75
- AV Ratio Between 0.75 to 1.0 (For TOD Areas Only)

#### Blue Line

- Blue/Gold Line
- Gold Line
- TOD Areas (Half Mile around Light Rail Stations)
- Sacramento City Limit
- Community Plan Area Boundary

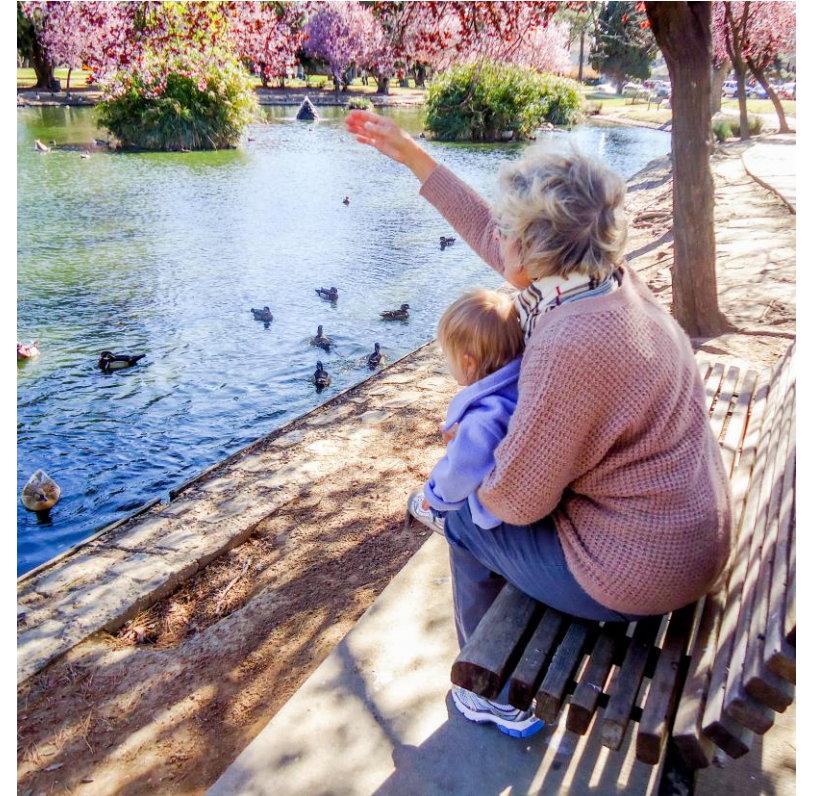
# EXPOSURE TO ENVIRONMENTAL PROBLEMS

- Air quality
- Pollution
- Health risks
- Poverty



# AGE-FRIENDLY COMMUNITIES

- Outdoor spaces and buildings
- Transportation
- Housing
- Social participation
- Respect and social inclusion
- Civic participation and employment
- Communication and information
- Community and Health services

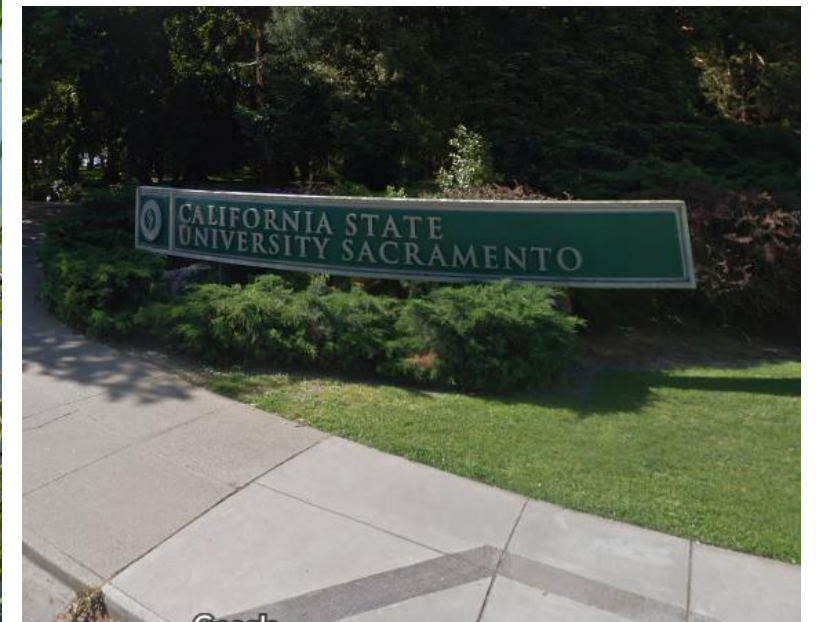




# WHAT ARE THE ISSUES AND PRIORITIES FOR EAST SACRAMENTO?

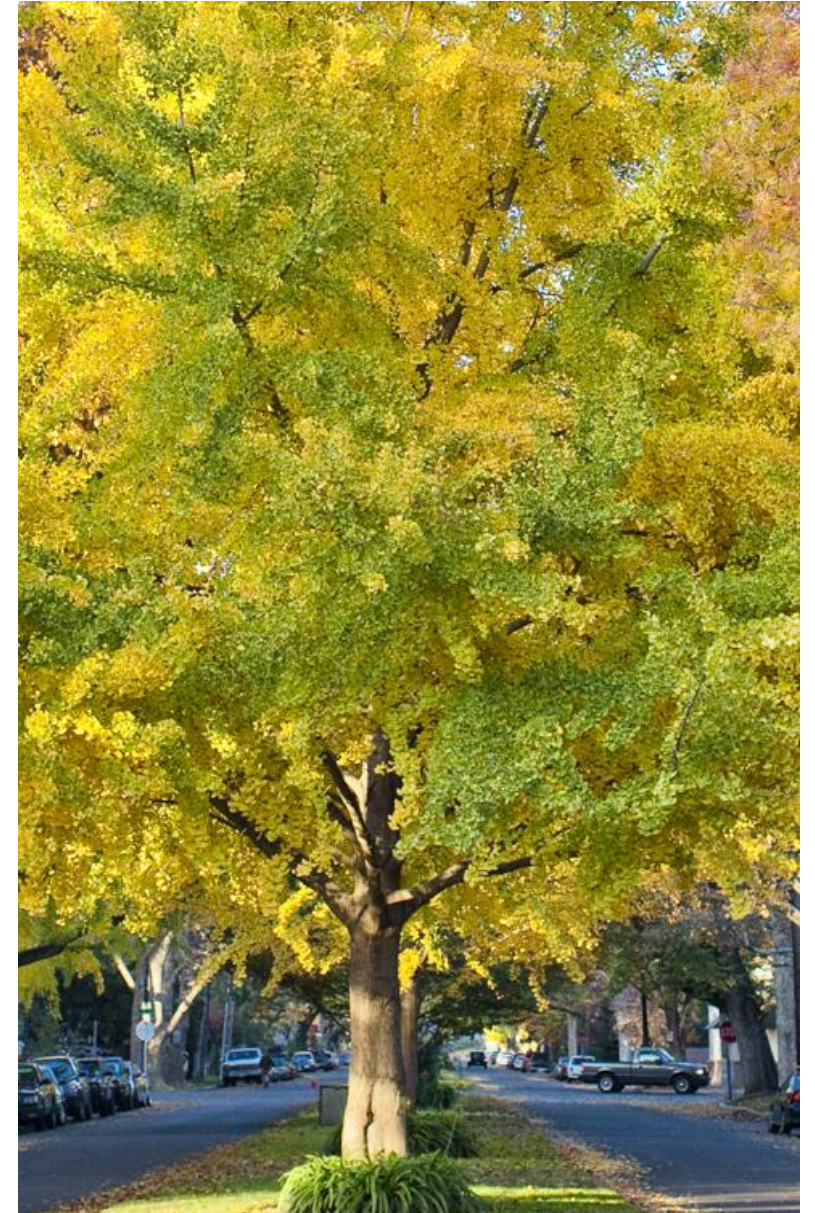
# WHAT COMMUNITY ASSETS SHOULD WE BUILD ON?

- Gathering spaces?
- Local businesses?
- Community qualities?



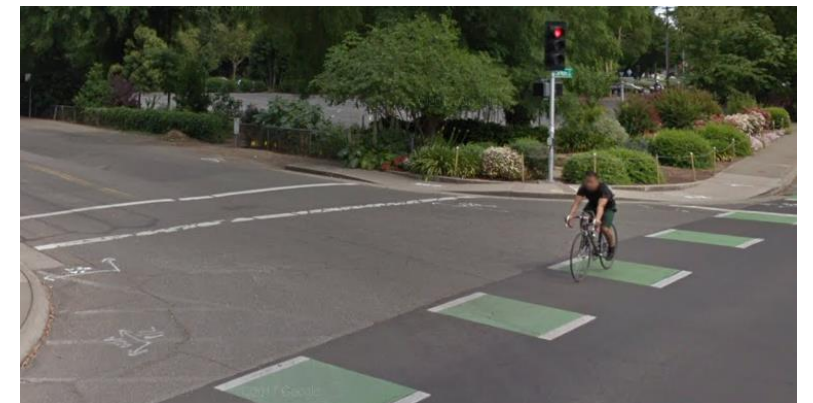
# WHAT WOULD YOU LIKE TO SEE CHANGE? WHAT'S MISSING?

- Housing?
- Food access?
- Green spaces?
- Safety?
- Climate action?
- Inclusiveness?
- Economic opportunities?

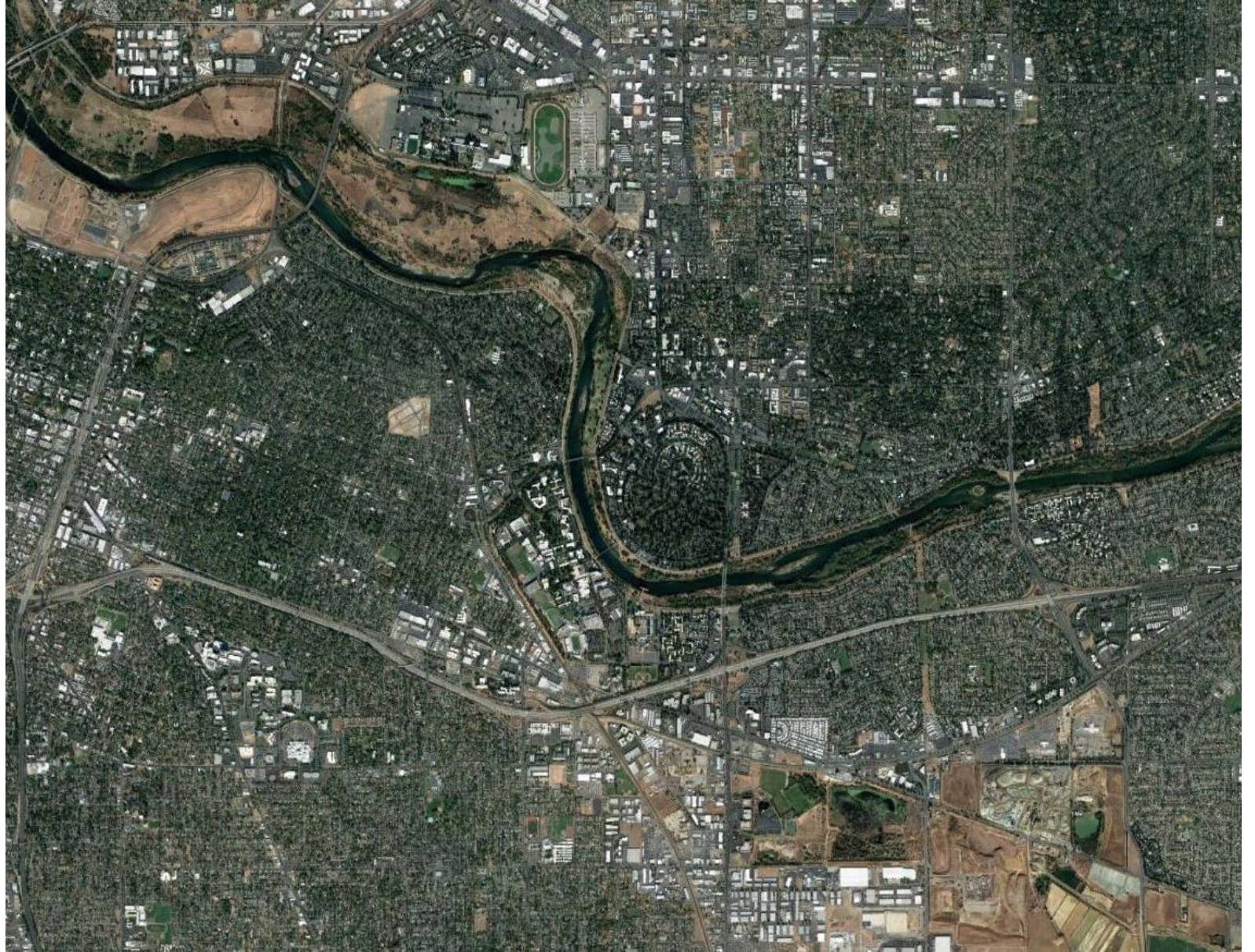


# ARE THERE BARRIERS TO GETTING AROUND?

- Transit access?
- Walking and biking infrastructure?
- Safety for all ages and abilities?



WHAT'S YOUR  
VISION FOR THE  
FUTURE OF EAST  
SACRAMENTO?







# TONIGHT'S ACTIVITY

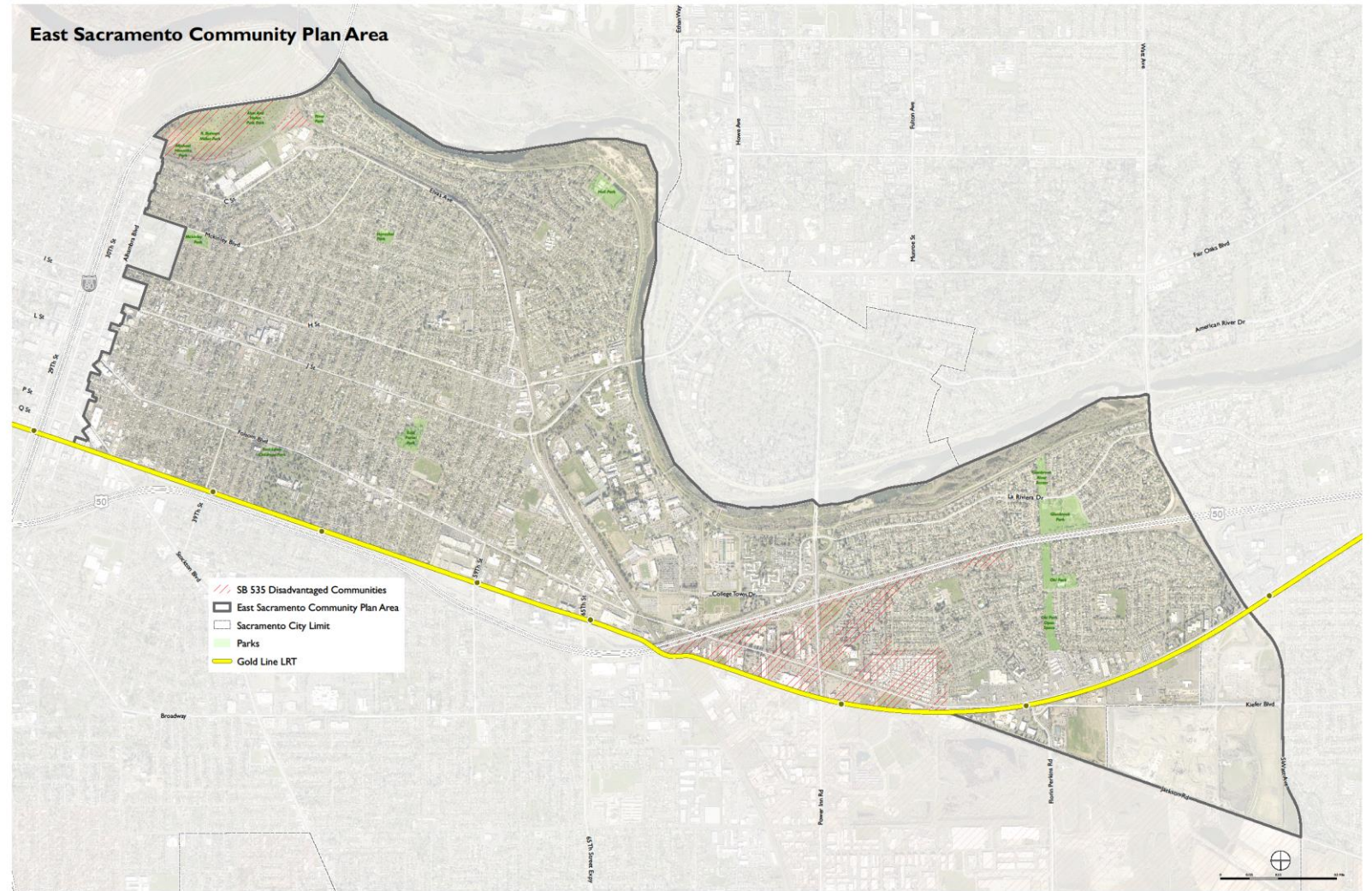
## WE WANT TO HEAR FROM YOU:

- What are the issues and opportunities for East Sacramento?

1. Which places in your neighborhood make the biggest contribution to the community?
2. Which areas would you like to see change over the next 10-20 years?
3. What barriers or obstacles are there to getting around in your neighborhood?
4. What headline should describe the East Sacramento Community Plan Area on the cover of Sacramento Magazine in the year 2040? What images would accompany the article?

# REPORT BACK:

- What were the key points of discussion at your table?





# WHAT ARE THE NEXT STEPS?

# STAY ENGAGED

- Subscribe to our mailing list tonight or online at: [sac2040gpu.org](http://sac2040gpu.org)
- Contact:  
Matt Hertel, Senior Planner, City of Sacramento  
(916) 808-7158  
[mhertel@cityofsacramento.org](mailto:mhertel@cityofsacramento.org)

