
sacramento | 2040

CITY OF SACRAMENTO GENERAL PLAN UPDATE AND CLIMATE ACTION PLAN



AGENDA

Welcome

Opening presentation

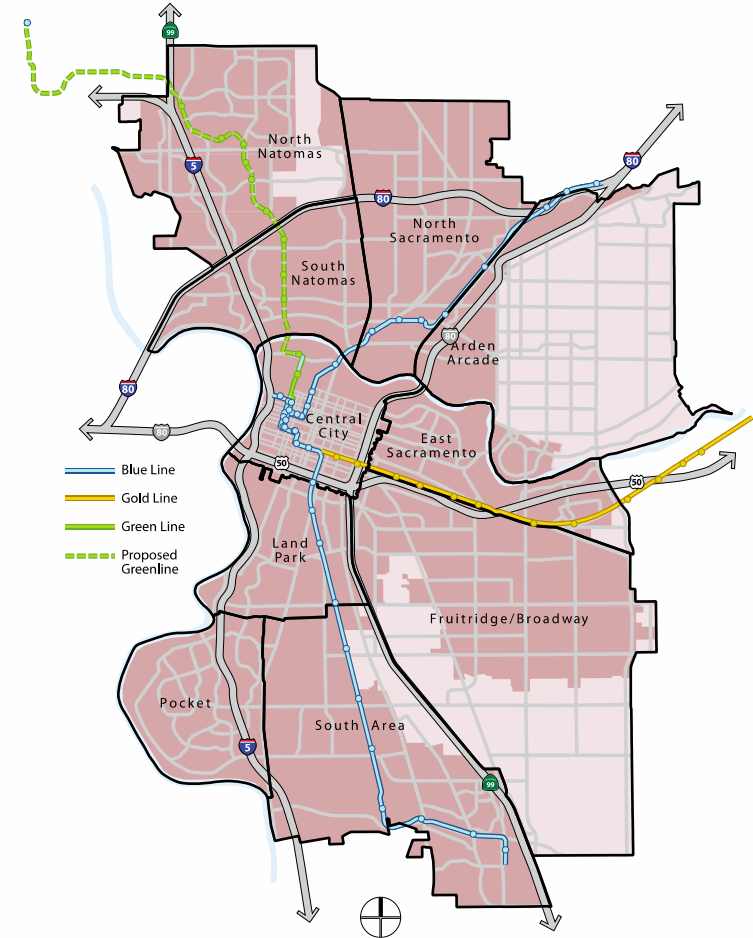
- What is Sacramento | 2040 ?
- Why are we updating the plans?
- Tonight's objectives

Activity stations



WHAT IS SACRAMENTO | 2040?

- Project involves updates to key long-range planning documents:
 - General Plan
 - Climate Action Plan
- Sacramento is the fastest growing big city in California
- Updates needed to respond to evolving community needs and address opportunities and challenges that come with growth



WHAT IS A GENERAL PLAN?

- Blueprint for urban development and preservation
- Provides a 20-year framework for Sacramento's future
- Addresses issues affecting all aspects of life

Sacramento's General Plan will:

- Serve as the **guide** for decision-makers and developers on how and where development should happen
- Identify the city's **assets** and **challenges**
- Recommend the type and **character** of development appropriate for different areas
- Identify necessary **transportation** and **infrastructure** improvements
- Include **goals, policies, actions**, and recommended **resources** to achieve the Plan's vision

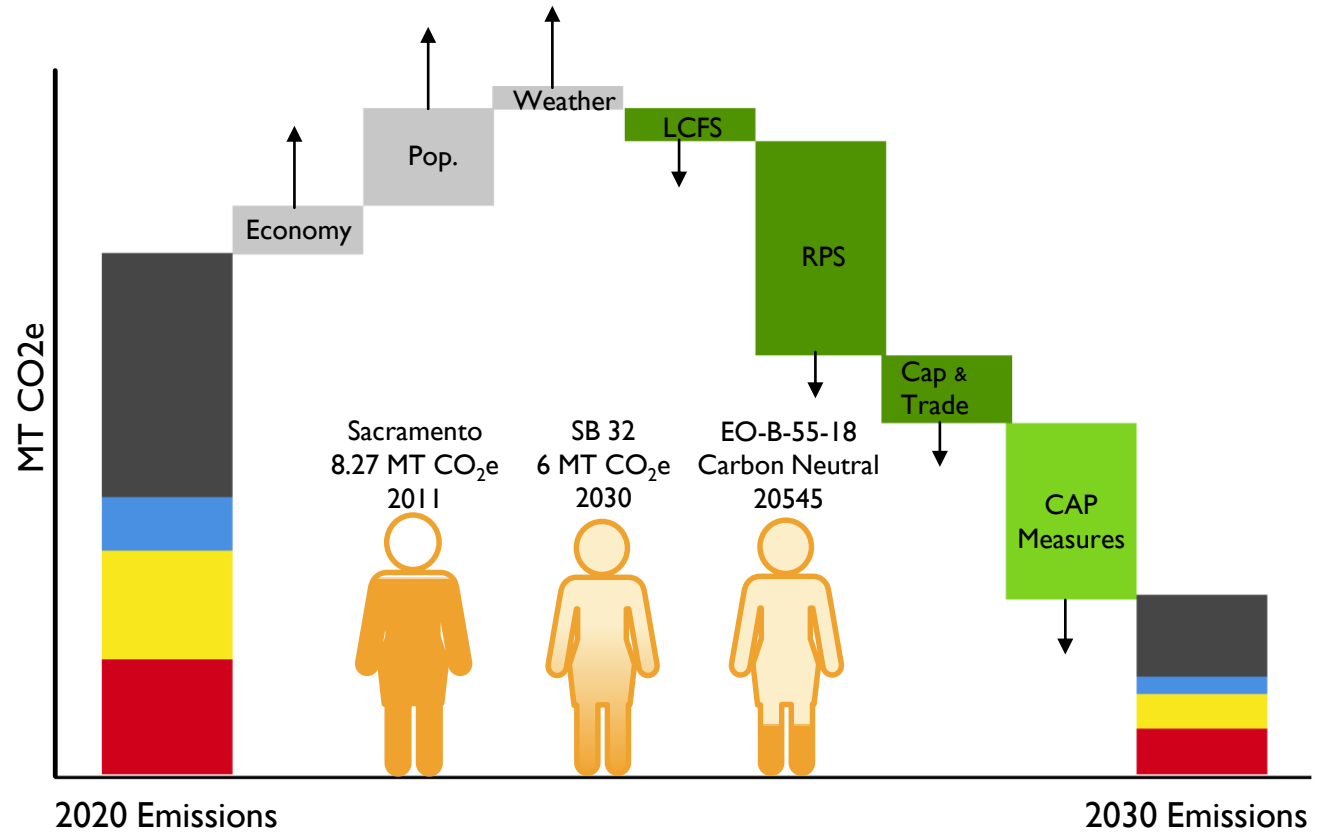
WHAT'S IN OUR GENERAL PLAN?

- Land Use & Urban Design
- Historic & Cultural Resources
- Economic Development
- Housing
- Mobility
- Utilities
- Education, Recreation & Culture
- Public Health & Safety
- Environmental Resources
- Environmental Constraints
- Environmental Justice*



WHAT IS A CLIMATE ACTION PLAN?

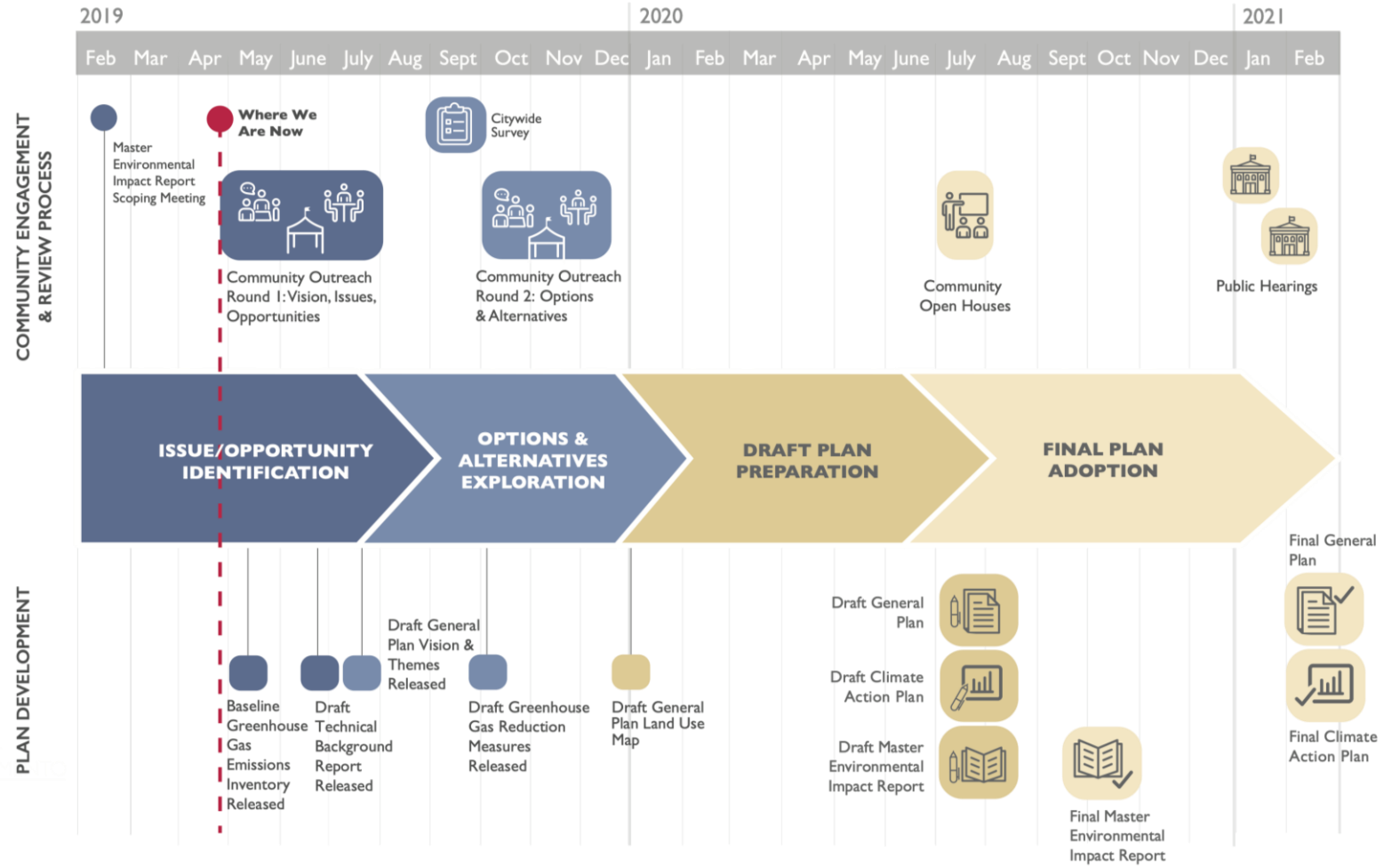
- Roadmap for reducing a city's GHG emissions and adapting to climate change
- Made up of three broad components:
 - Inventory of current emissions
 - GHG targets and forecasts
 - Corresponding GHG mitigation measures



LCFS = Low Carbon Fuel Standard (State regulation)

RPS = Renewable Portfolio Standard (State regulation)

PROJECT PROCESS AND TIMELINE



WAYS TO GET INVOLVED



CITYWIDE
WORKSHOPS



COMMUNITY
PLAN AREA
WORKSHOPS



SCIENTIFIC
SURVEY



TELEPHONE
TOWN HALL



POP UP EVENTS

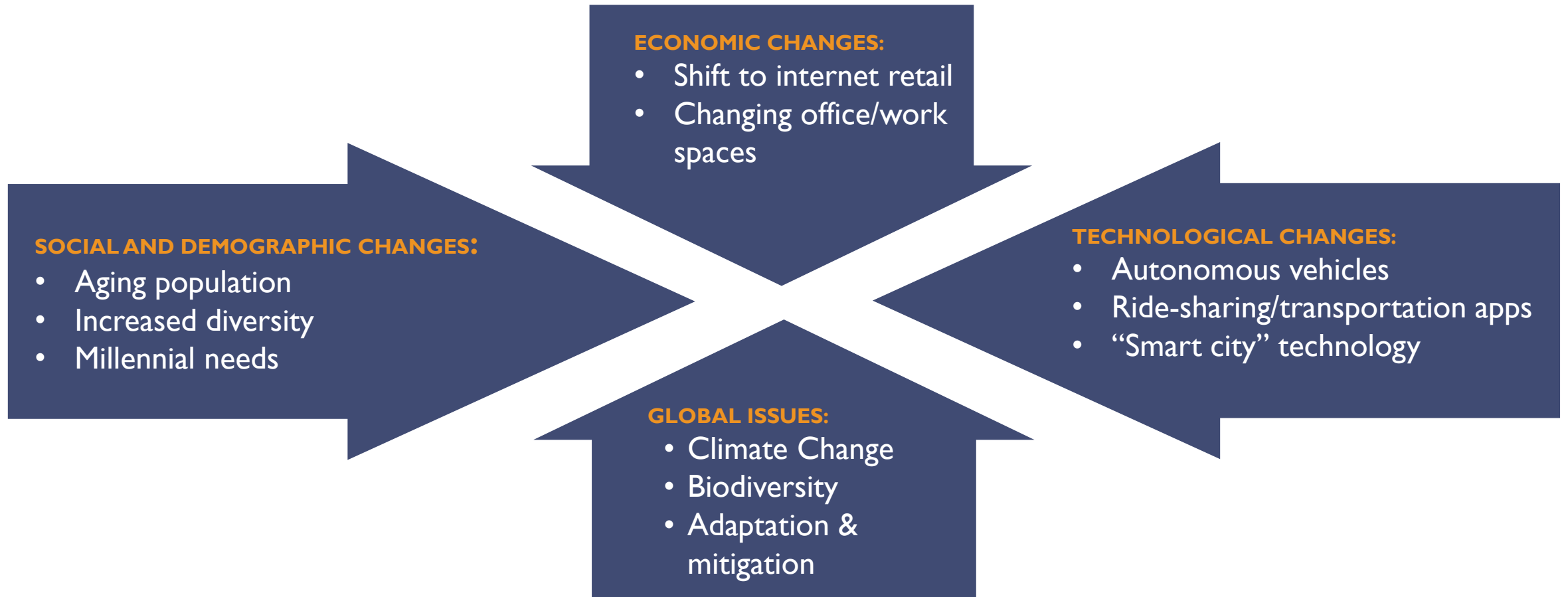


ONLINE
ENGAGEMENT



WHY ARE WE UPDATING THE PLANS?

FORCES ON THE PLANS



FORCES ON THE PLANS

NEW LAWS AND REGULATIONS:

- SB743 – Transportation Impacts
- SB379 – Climate Adaptation and Resiliency
- SB1000 – Environmental Justice
- Housing Mandates

ECONOMIC CHANGES:

- Shift to internet retail
- On-line office/work spaces

SOCIAL AND DEMOGRAPHIC CHANGES:

- Aging population
- Increased diversity
- Millennial needs

TECHNOLOGICAL CHANGES:

- Autonomous vehicles
- Ride-sharing/transportation apps
- “Smart city” technology

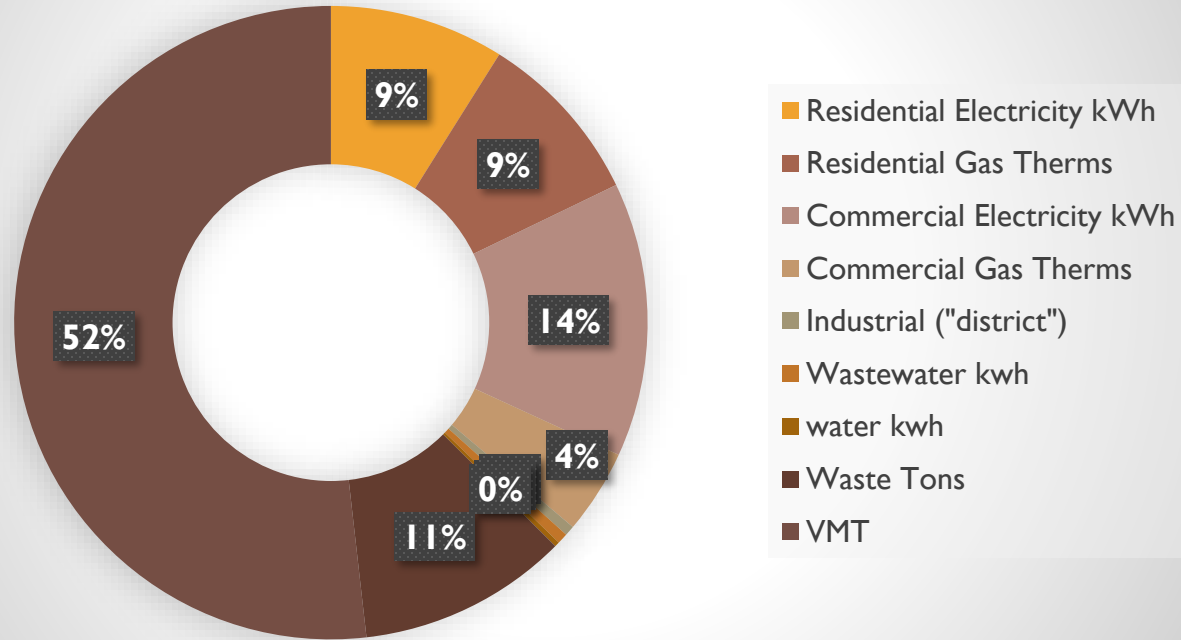
ENVIRONMENTAL CHANGES:

- Climate Change
- Biodiversity
- Adaptation & mitigation



EMERGING ISSUE: MOBILITY

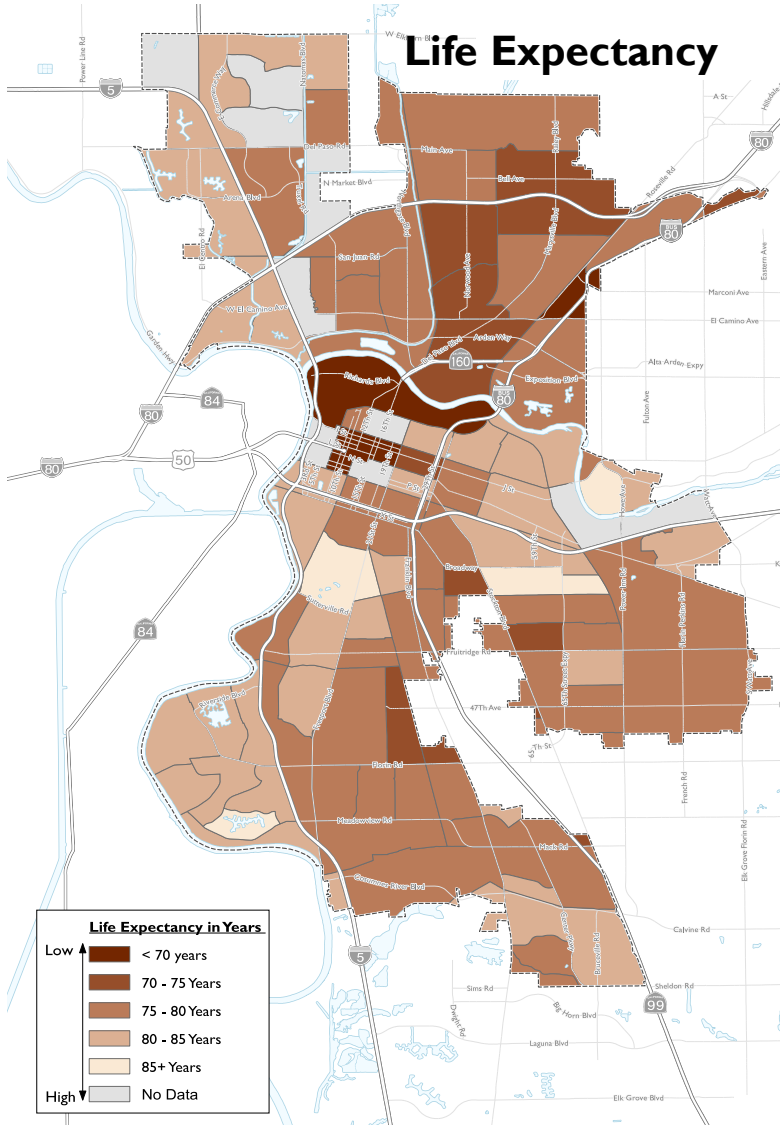
2016 GHG Inventory Estimate



EMERGING ISSUE:
CLIMATE CHANGE



EMERGING ISSUE: ENVIRONMENTAL JUSTICE





EMERGING ISSUE:
LIVABILITY



KEY OBJECTIVES

1. Ensure **equitable, inclusive, and sustainable** growth
2. Create **healthier communities**, build **community resilience**, and meet the needs of our most vulnerable communities
3. Reduce **greenhouse gases** and prepare for the **impacts of climate change**
4. Create an **efficient, multi-modal transportation system**
5. Foster **Transit-Oriented Development (TOD)**
6. Make Sacramento more **livable and accessible for people of all ages**

SACRAMENTO | 2040

is about leveraging our assets, as well as economic, social, and technological shifts, to create positive changes that benefit the community.



TONIGHT'S ACTIVITY

ACTIVITY STATIONS

Seven stations are set up around the room on the following topics:

1. What is a General Plan?
2. Issues and opportunities
3. Vision statement and guiding principles
4. Environmental justice
5. Climate change
6. Mobility
7. Livability and Resilience

RESILIENCE sacramento | 2040
General Plan Update and Climate Action Plan

Many of the factors that make a city livable also build resilience in the face of disasters, climate change impacts, and other threats.

When a city is vulnerable, it can't adequately prepare for, respond to, and recover from a disaster. Vulnerability is the result of many overlapping factors, affecting all people, whether directly or indirectly.

The capacity of an individual, community, organization, or system to prepare for disruptions, to recover from shocks and stresses, and to adapt and grow after a disaster.

VULNERABILITY

RESILIENCE

The effect on a community is most severe when a disaster event is combined with other factors like poverty and violence.

A resilient community combines the following factors:

- Poverty**—When cities have high levels of poverty, certain groups are more affected by disasters because they don't have resources or access to services that keep them safe.
- Violence**—Violent crime or civil unrest undermines social cohesion and a community's ability to maintain or restore order and safety in face of a disaster.
- Disaster**—Urban disasters are events that can be natural (like an earthquake) or manmade (like a hazardous materials accident).
- Community Bonds**—People in a resilient community feel like they are socially connected and valued.
- Leadership**—Resilient communities have leadership that plans for risks and addresses vulnerabilities.
- Security**—People feel they can meet their basic needs and feel safe.

BUILDING RESILIENCE: These six categories describe components that support a resilient city and offer a few examples of how making a city livable also makes it resilient.

<p>ECONOMY</p> <p>A diverse economy with a wide range of business activity can help us weather economic downturns and natural disasters and can also provide good jobs and steady income to residents.</p>	<p>ENVIRONMENTAL QUALITY</p> <p>Study areas that make our streets more pleasant also reduce effects of heat islands.</p>	<p>INFRASTRUCTURE</p> <p>Infrastructure that enables us to use our cellphones and internet also facilitates emergency alerts.</p>
<p>GOVERNANCE</p> <p>Government that engages with residents to understand their needs is better equipped to provide services on a daily basis and in case of emergency.</p>	<p>COMMUNITY BONDS</p> <p>Community institutions like churches, volunteer groups, or libraries can also be sources of aid during emergencies.</p>	<p>HEALTH, WELLBEING, & OPPORTUNITY</p> <p>Physical activity, nutritious food, and access to mental care helps us stay healthy and less vulnerable to extreme heat or poor air quality in the event of wildfires.</p>

sacramento | 2040
sac2040gpu.org

CLIMATE CHANGE IMPACTS sacramento | 2040
General Plan Update and Climate Action Plan

The planet's average surface temperature has risen about 1.62 degrees Fahrenheit since the late 19th century, largely due to increased emissions of carbon dioxide and other gases into the atmosphere as a result of human activities. Most of the warming has occurred in the last 35 years and scientists project that the trend will continue in the future. Higher average temperatures will bring environmental changes that affect our communities and natural habitats.

Cal-Adapt, a climate change scenario planning tool developed by the California Energy Commission (CEC) and the University of California Berkeley, projects impacts under various potential scenarios, assuming different levels of GHG reduction into the future:

- A low emissions scenario (RCP 4.5) — Emissions will peak around 2040 then decline, leading to an average temperature increase of 3.5 degrees Fahrenheit by 2090
- A high emissions scenario (RCP 8.5) — Emissions continue to rise strongly through 2050 and peak around 2100, leading to an average temperature increase of 6.2 degrees Fahrenheit by 2090

SNOWPACK

As temperatures rise, more precipitation will fall as rain instead of snow and snow that does fall will melt earlier, reducing the Sierra Nevada spring snowpack by as much as 70 to 80 percent. The ability of snowpack to retain water and release it gradually is fundamental to water supply planning. Loss of snowpack poses challenges for water storage and distribution as well as hydroelectric power generation.

PRECIPITATION

As temperatures rise, precipitation patterns will shift. In some locations, precipitation events may increase in timing, intensity, and amount while they decrease in other locations. Reduced precipitation could lead to higher risk of drought, while increased precipitation could cause flooding and soil erosion.

RISK OF FIRE

Wildfires in California are projected to become more frequent and more intense as average temperatures increase and dense vegetation to dry out. Wildfires already affect air quality, public health and sensitive habitat integrity.

	CURRENT 2010	FUTURE SCENARIOS	
		2090 Low Emissions	2090 High Emissions
SNOWPACK			
PRECIPITATION			
RISK OF FIRE			

sacramento | 2040
sac2040gpu.org

ACTIVITY STATIONS

- At each station, look at the maps and photos to learn about Sacramento today

ENVIRONMENTAL JUSTICE sacramento | 2040
General Plan Update and Climate Action Plan

In Sacramento, many areas with the highest concentration of lower-income households are also more exposed to pollution and experience higher rates of health issues.

Life Expectancy

Life expectancy varies significantly between areas of Sacramento. While genetics play a part, life expectancy is highly influenced by socio-economic factors and by our physical and social environment.

Cardiovascular Disease

Areas with the highest rates of emergency room visits due to heart attack - an indicator of cardiovascular disease (CVD), the leading cause of death in California. A variety of factors contribute to CVD, including diet, lack of exercise, smoking, and air pollution.

Pollution Burden

Areas with the greatest combined pollution burden, considering air pollution, water quality, and exposure to hazardous chemicals.

City of SACRAMENTO | sac2040gpu.org

ACTIVITY STATIONS

- At some stations there is an interactive activity
- There is also a workshop guide with questions to complete
- Record your thoughts in the guidebook and turn it in before you leave

Station 1: What is a General Plan?

This station includes an overview of the project, the process, and the timeline. At this station you can learn about the General Plan and the Climate Action Plan.

The General Plan serves as the constitution for urban development and preservation in the city. It guides decision-makers and developers on how and where development should happen.

The Climate Action Plan (CAP) is a community-wide strategy for reducing greenhouse gas (GHG) emissions and adapting to the effects of climate change. It includes GHG reduction targets and specific actions for achieving them. Our current climate action strategy is incorporated into the General Plan, but as part of Sacramento | 2040, the CAP will be revived as a standalone document.



Station 2: Opportunities & Issues

What makes you want to be in Sacramento and stay here? Using green, yellow and red colored post-its, tell us what you think about Sacramento.

Use a green post-it for "What I like about Sacramento"

Use a yellow post-it for "What I wish Sacramento had more of"

Use a pink post-it for "What I wish would change in Sacramento"

Station 3: Vision Statement & Guiding Principles

The current General Plan contains a Vision Statement and Guiding Principles that set out a vision for Sacramento's future and capture our shared values and aspirations. Since the Vision Statement and Guiding Principles were originally adopted in 2005, times have changed.

Today, Sacramento is the fastest growing big city in California in terms of population, and as we look ahead to the next 10-20 years, we need your input to update the vision statement and ensure we have the right guiding principles in place to help us take full advantage of the opportunities that growth presents while also addressing the associated challenges.

Please review the boards at this station and share your thoughts on how the Guiding Principles should be updated for the next 10-20 years.

3A. What would you keep or reinforce?

3B. What would you add or change?

STAY INFORMED

- Subscribe to our mailing list tonight or online at:
sac2040gpu.org
- Contact:
Remi Mendoza, Senior Planner
City of Sacramento
(916) 808-5003
RMendoza@cityofsacramento.org

